

Parts List

1	Driver / left mounting bracket
1	Passenger / right mounting bracket
1	Driver / left logo plate
1	Passenger / right logo plate
8	Thread forming screw, M4 x 10mm
10	Flat washer, M8
10	Button head screw, M8 x 35mm
10	Spacer

Tools Required

Ratchet	Torx bit, T-20
Allen wrench, 5mm	Torx bit, T-50

Torque Specifications

	Torque Specifications	
METRIC	M6 bolt	3 ft.-lbs.
	M8 bolt	7 ft.-lbs.
	M10 bolt	16 ft.-lbs.
	M12 bolt	28 ft.-lbs.
SAE	1/4" bolt	3 ft.-lbs.
	5/16" bolt	7 ft.-lbs.
	3/8" bolt	16 ft.-lbs.
	7/16" bolt	20 ft.-lbs.
	1/2" bolt	28 ft.-lbs.

Level of Difficulty

Moderate



Scan for helpful install tips

Product Image



Notes and Maintenance

- Before you begin installation, read all instructions thoroughly.
- Proper tools will improve the quality of installation and reduce the time required.
- For black finishes, mild soap may be used to clean the product.
- Refer to the table to the left when securing hardware during the installation process to help prevent damage to the product or vehicle.

Step 1

Starting on the drivers side, use a ratchet and a T-50 Torx bit to remove the top five factory fasteners from the windshield pillar.



Step 2

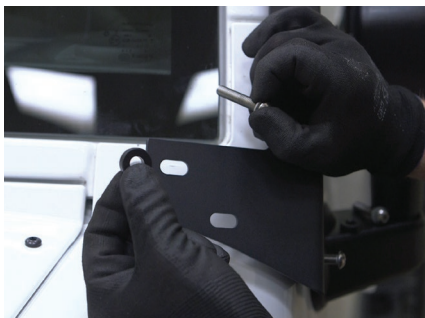
Select the driver-side mounting bracket and install using the provided M8 x 35mm button head screw, M8 flat washer and spacer.

Once the spacers are between the mounting bracket and vehicle, start all five screws.

Snug the hardware, but do not fully tighten.

Note: To make the installation of the spacers between the bracket and vehicle easier, apply a small amount of adhesive to the spacers and temporarily secure them to the vehicle over the mounting locations.

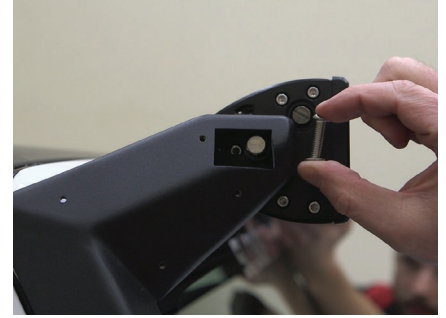
Repeat this process to attach the passenger-side bracket to the vehicle.



Step 3

With help, lift the light bar into place and fasten to the driver- and passenger-side mounting brackets using the hardware provided with the light bar.

Level and adjust the light bar.
At this time, tighten all hardware.



Step 4

Complete the installation by attaching the driver- and passenger-side logo plates with the provided M4 x 10mm thread forming screws.

With the roof light mounting brackets installed, periodic inspections should be performed to ensure all mounting hardware remains tight.

Congratulations on the installation of your new ARIES roof light mounting brackets.

