

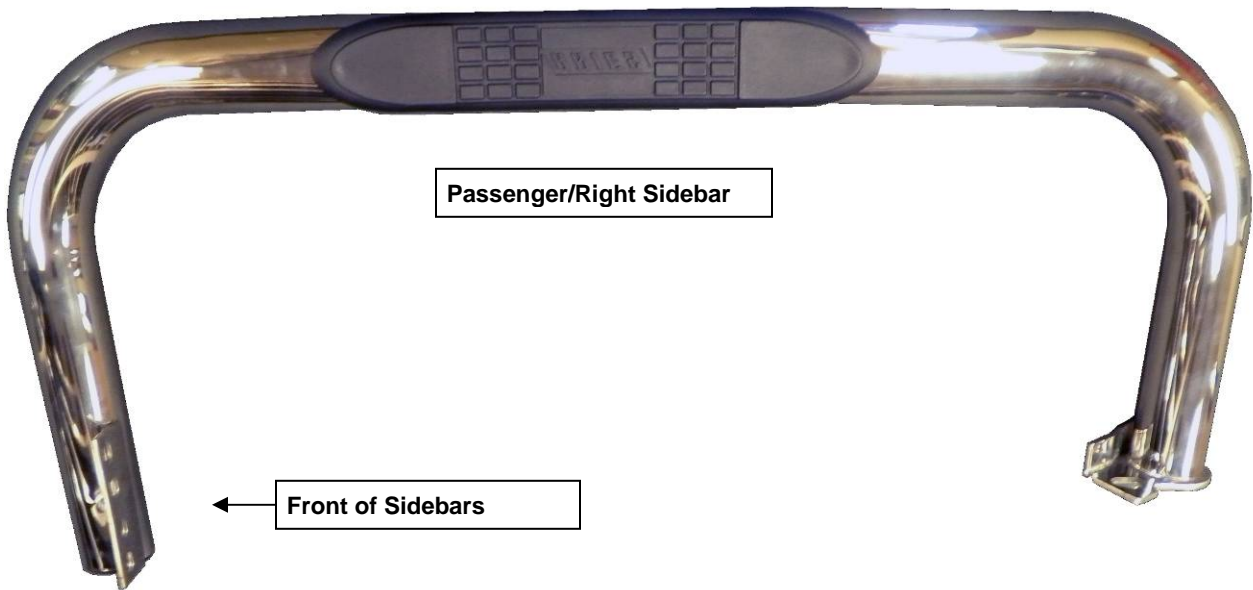
INSTALLATION INSTRUCTIONS

1966-1977 FORD BRONCO
PART # 203038 / 203038-2

PARTS LIST:

Qty	Description	Qty	Description
1	Driver/Left Sidebar	14	10mm Lock Washers
1	Passenger/Right Sidebar	28	10mm flat washers
1	Driver/Left Front Mounting Bracket	14	10mm Hex Nuts
1	Passenger/Right Front Mounting Bracket	2	5/8" Nuts
14	10mm x 40mm Hex Bolts	2	16mm Lock washers

PASSENGER SIDE SHOWN



Passenger & Driver Side Front Mounting Bracket



PROCEDURE:

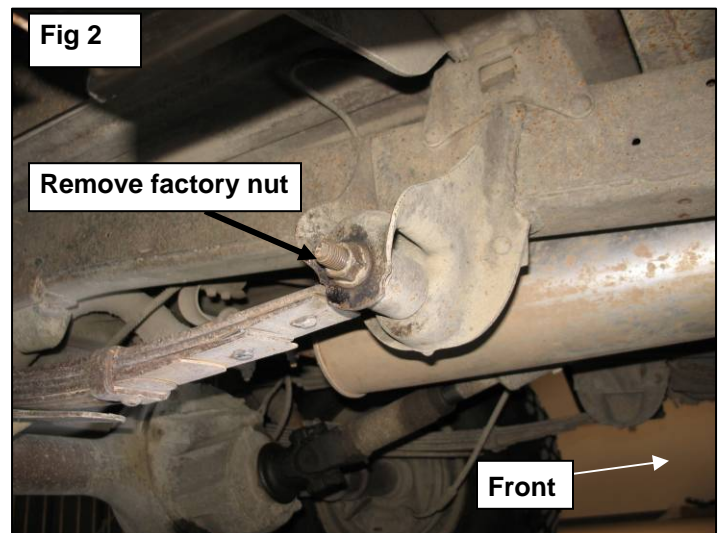
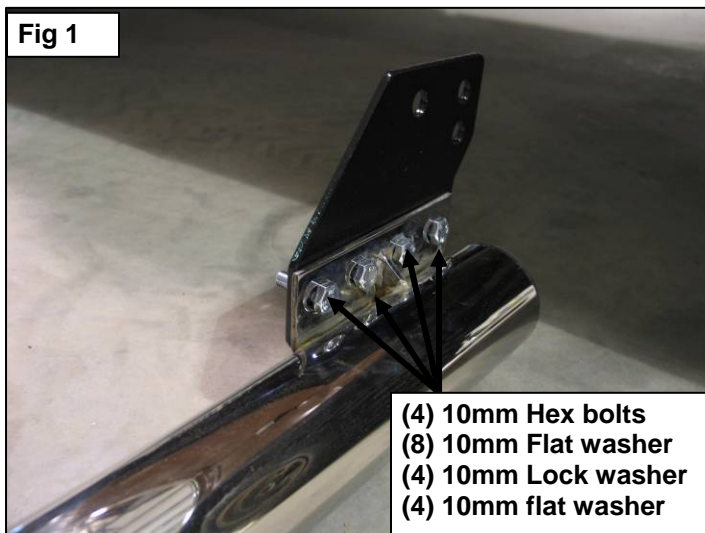
1. REMOVE CONTENTS FROM BOX. VERIFY ALL PARTS ARE PRESENT. READ INSTRUCTIONS CAREFULLY BEFORE STARTING INSTALLATION. Drilling (3) 10mm holes are required per side.
2. Select the passenger sidebar from the list of parts & attach the front mounting bracket to the front leg of the sidebar with (4) 10mm hex bolts,(8) 10mm flat washers,(4) 10mm lock washers & (4) 10mm nuts as see in **(FIG 1)** offset portion of bracket fits towards the frame Snug but do not tighten hardware at this time.
3. With the bracket attached to the sidebar remove the factory rear nut from the front of the leaf spring bolt, as seen in **(FIG 2)** with the nut removed from the bolt, place the side bar over the leaf spring bolt and secure it with (1) 5/8" nut and (1) 16mm lock washer as seen in **(FIG 3)** Snug but leave loose enough to be able to pivot the side bar do not tighten hardware at this time.
4. With the rear attached and with help or a jack stand raise the front of the side bar sidebar up and level with the bottom of the cab equal distance in the front & rear between the cab and the sidebar as seen in **(FIG 4)** with the bar in place position the bracket against the front body mount as seen in **(FIG 5)** and mark the (3) holes with a marker for drilling, once you are satisfied with the location of the holes lower the side bar and drill out the (3) holes with a 10mm drill bit as seen in **(FIG 6)**.
5. Once holes are drilled lift the sidebar back into position secure side bar with (3) 10mm bolts, (6) 10mm flat washers, (3) 10mm lock washers & (3) 10mm nuts as seen in **(FIG 7)** Snug but do not tighten hardware at this time.
6. Level and align Sidebar properly and tighten all hardware.
7. Repeat Steps 2-6 for driver Sidebar installation.
8. Do periodic inspections to the installation to make sure all hardware is secure and tight.

To protect your investment, wax this product after installing. Regular waxing is recommended to add a protective layer over the finish. Do not use any type of polish or wax that may contain abrasives that could damage the finish.

For stainless steel: Aluminum polish may be used to polish small scratches and scuffs on the finish. Mild soap may be used also to clean the Sidebar.

For gloss black finishes: Mild soap may be used to clean the Sidebar.

PASSENGER SIDE INSTALLATION PICTURED



PASSENGER SIDE INSTALLATION PICTURED

Fig 3

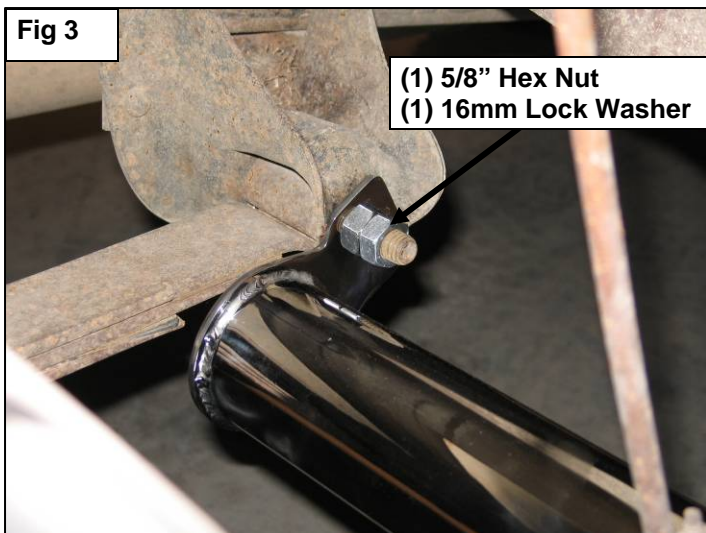


Fig 4

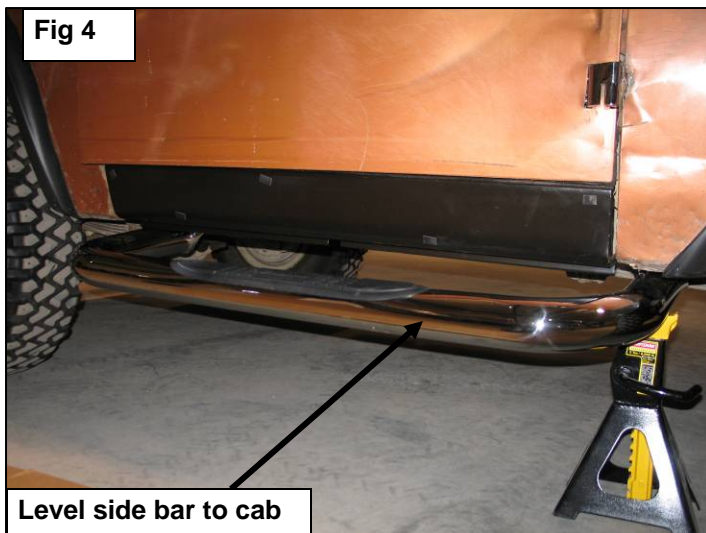


Fig 5



Fig 6

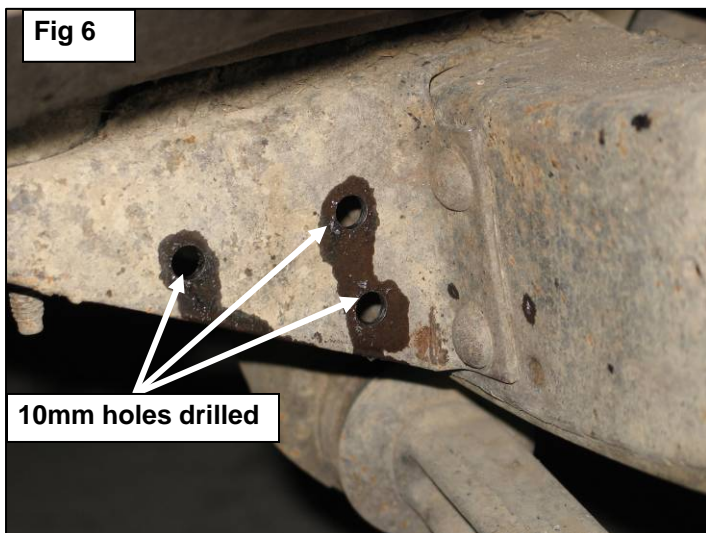


Fig 7

