

Parts List

1	Driver / left side bar
1	Passenger / right side bar
6	Mounting bracket, universal
13	Clip nut, M8
13	Hex bolt, M8 x 25mm
13	Flat washer, M8
13	Lock washer, M8
13	Hex bolt, M10 x 30mm
15	Flat washer, M10
14	Lock washer, M10
1	Bolt plate, M10
2	Hex nut, M10
1	Plastic bolt retainer, M10
1	Def-tank L-bracket
1	Def-tank support bracket

Level of Difficulty

Easy



Scan for helpful install tips

Product Image



Tools Required

Ratchet	Level
Socket, 13mm	Wrench, 16mm
Socket, 16mm	

Torque Specifications

	Torque Specifications	
METRIC	M6 bolt	3 ft.-lbs.
	M8 bolt	7 ft.-lbs.
	M10 bolt	16 ft.-lbs.
	M12 bolt	28 ft.-lbs.
SAE	1/4" bolt	3 ft.-lbs.
	5/16" bolt	7 ft.-lbs.
	3/8" bolt	16 ft.-lbs.
	7/16" bolt	20 ft.-lbs.
	1/2" bolt	28 ft.-lbs.

Notes and Maintenance

Before you begin installation, read all instructions thoroughly.

Proper tools will improve the quality of installation and reduce the time required.

To protect the product, wax after installing. Regular waxing is recommended to add a protective layer over the finish. Do not use any type of polish or wax that may contain abrasives that could damage the finish.

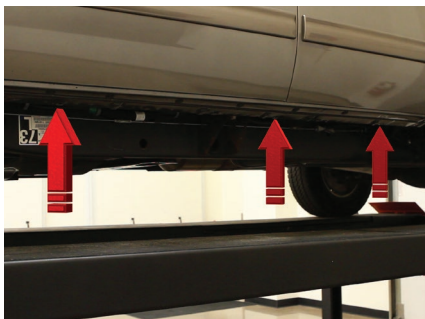
For gloss black finishes, mild soap may be used to clean the product.

Always start threaded fasteners by hand and finish tightening with a wrench. Do not use an impact driver as this may result in cross-threading and cause damage to the side bar.

Step 1

Locate the five mounting tabs along the bottom edge of the vehicle body.

This installation will use the first, third and fifth mounting tabs.



Step 2

Starting at the front driver-side mounting location, locate the threaded hole on the inside of the body panel.

Attach a universal mounting bracket to the body panel using an M8 hex bolt with a lock and flat washer.

Snug the hardware, but do not fully tighten.



Step 3

Rotate the bottom of the bracket to the side to expose the hole in the mounting tab.

Slide an M8 clip nut over the mounting tab and rotate the bracket back into position.

Secure the bracket with a second M8 hex bolt, lock washer and flat washer.

Snug the hardware, but do not fully tighten.



Step 4

Repeat steps 2 and 3 to install the second bracket over the third mounting tab location from step 1.



Step 5

Locate the fifth mounting tab from step 1 and remove the rubber plug from the access hole.

Insert a clip nut through the access hole and align it over the adjacent small hole.

Secure the top of the bracket with an M8 hex bolt, lock washer and flat washer.

Repeat step 3 to secure the bottom of the bracket.



Step 6

Carefully position the side bar onto the mounting brackets.

Ensure all the mounting locations on the bottom of the side bar line up with the mounting brackets.

Note: If the holes on the side bar do not match up with the brackets, ensure all brackets have been installed in the correct locations and the correct side bar is being used.



Step 7

Attach the side bar to the brackets with six of the M10 hex bolts, lock washers and flat washers.

Snug the hardware, but do not fully tighten.



Step 8

Ensure the vehicle is on level ground.

Use a bubble level to ensure the side bar is level and parallel with the side of the vehicle. Make adjustments to the bracket positions and rotate the side bar as necessary.

With the side bar aligned, tighten all the hardware on the brackets to the vehicle.

Double check that the side bar is level and finalize the install by tightening all the hardware securing it to the brackets.



Step 9

Repeat steps 1 through 8 on the passenger side.

Note: For diesel trucks, the front bracket on the passenger side will require the included def-tank brackets. Follow steps 10 through 16 to complete the install.



Step 10

2014 or older

2015 or newer

Locate the def-tank bracket components for diesel truck models.

Begin the install by locating the round factory hole in the bottom of the rocker panel, closest to the front bracket mounting location. The installation of the bracket will vary depending on the vehicle model shown to the right.

Remove the plastic plug to expose the mounting hole in the rocker panel.



Step 11

Insert the M10 bolt plate into the access hole in the rocker panel.

Push the plastic retainer onto the threaded end of the bolt plate to help hold the plate in position.



Step 12

Select the def-tank L-bracket.

Attach the short end of the bracket to the bolt plate with the flat washer, lock washer and M10 hex nut.

Snug the hardware, but do not fully tighten.



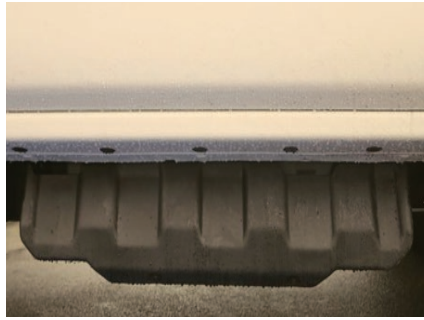
Step 13

Select the def-tank L-bracket.

Attach the short end of the bracket to the bolt plate with the flat washer, lock washer and M10 hex nut.

Snug the hardware, but do not fully tighten.

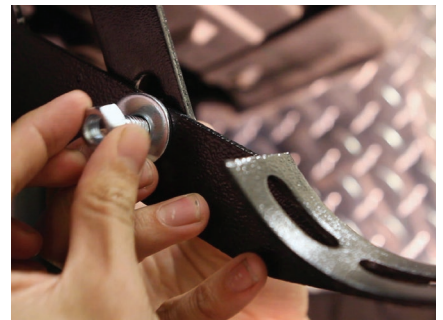
Note: On 2017 models, the DEF tank shield will need to be removed and trimmed before reinstallation.



Step 14

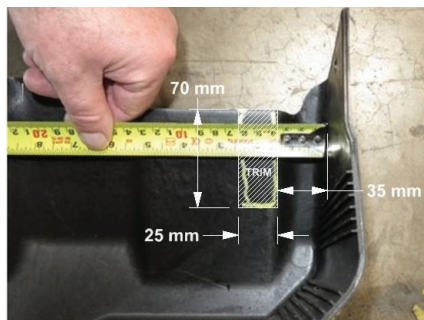
Bolt the def-tank support bracket to the back of the def-tank L-bracket using a M10 hex bolt, flat washer and lock washer.

Snug the hardware, but do not fully tighten.



Step 15

For 2017 diesel models only: Trim DEF tank shield as needed and reinstall.



Step 16

Congratulations on the installation of your new ARIES 3" round side bars.

With the side bars installed, periodic inspections should be performed to ensure all mounting hardware remains tight.

To protect your investment, see the 'Notes and Maintenance' section on the first page of this instruction manual.

