

INSTALLATION MANUAL

2051181

Level of Difficulty

Easy

Parts List

1	Driver / left running board*
1	Passenger / right running board*
1	Driver / left bracket, front
1	Driver / left bracket, middle
1	Driver / left bracket, rear
1	Passenger / right bracket, front
1	Passenger / right bracket, middle
1	Passenger / right bracket, rear
6	In-pullnut, M8
6	Hex bolt, M8
10	Flat washer, M8
10	Lock washer, M8
4	Hex nut, M8
2	Fishwire, M10
2	Bolt plate, M10
2	Flat washer, M10
2	Lock washer, M10
2	Hex nut, M10
2	Plastic bolt retainer, M10

*Running boards sold separately

Additional Hardware*

12	Hex bolt, M8
12	Flat washer, M8
12	Lock washer, M8
12	Hex nut, M8

*Aluminum side bars are supplied with additional hardware. Quantities listed are in addition to the standard supplied hardware.

Tools Required

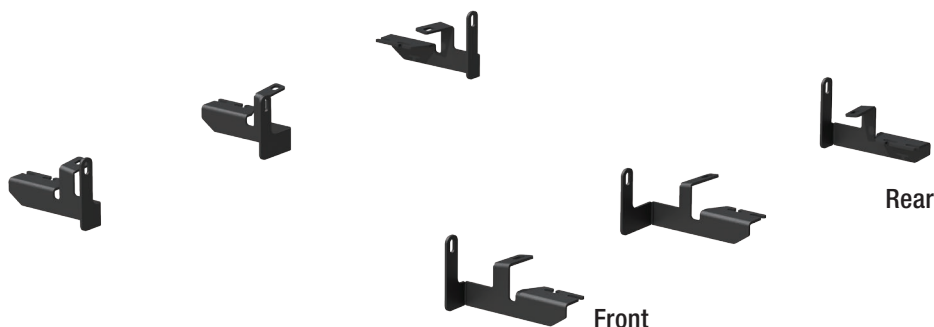
Ratchet	Socket set
Level	Wrench
Screwdriver	

Torque Specifications

Metric	M6 bolt	3 ft.-lbs.
	M8 bolt	7 ft.-lbs.
	M10 bolt	16 ft.-lbs.
	M12 bolt	28 ft.-lbs.

Use above torque setting unless otherwise noted

Product Photo



AeroTread™ (not included)



Notes and Maintenance

Before you begin installation, read all instructions thoroughly.

Proper tools will improve the quality of installation and reduce the time required.

To protect the product, wax after installing. Regular waxing is recommended to add a protective layer over the finish. Do not use any type of polish or wax that may contain abrasives that could damage the finish.

For polished, gloss and other smooth finishes, polish may be used to clear small scratches and scuffs on the finish.

Mild automotive detergent may be used to clean the product. Do not use dish detergent, abrasive cleaners, abrasive pads, wire brushes or other similar products that may damage the finish.

Refer to the table to the left when securing hardware during the installation process to help prevent damage to the product or vehicle.

Product Registration

CURT Group stands behind our products with industry leading warranties. You can help us continue to improve our product line and help us understand your needs by registering your purchase by visiting:

warranty.curtgroup.com/surveys

At CURT Group, customer is king. We value your feedback and we use that information to make improvements on our products. Please, take a minute and let us know how we are doing.

Step 1

Starting on the passenger side, locate the three mounting locations underneath the vehicle.

Note: Each bracket is specific to a mounting location. Reference page 1 product image for correct locations.



Step 2

Locate the front mounting points.

Remove the rubber plug and insert a in-pullnut.

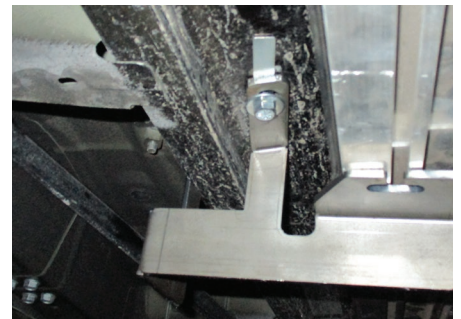


Step 3

Place the front passenger-side bracket onto the factory M8 bolt and secure with an M8 flat washer, lock washer and hex nut.

Secure the rocker mount tab with an M8 flat washer, lock washer and hex bolt.

Snug the hardware, but do not fully tighten.



Step 4

Locate the middle mounting points.

Remove the rubber plug and insert a in-pullnut.

Fishwire an M10 bolt plate and hold in place with a plastic bolt retainer.

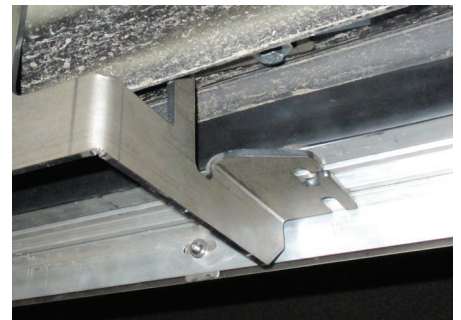


Step 5

Place the middle passenger-side bracket onto the vehicle and secure with an M10 hex nut, lock washer and flat washer.

Secure the rocker mount tab with an M8 bolt, flat washer and lock washer.

Snug the hardware, but do not fully tighten.



Step 6

Locate the rear mounting points.

Remove the rubber plug and insert a in-pullnut.



Step 7

Place the rear passenger-side bracket onto the factory M8 bolt and secure with an M8 flat washer, lock washer and hex nut.

Secure the rocker mount tab with an M8 flat washer, lock washer and hex bolt.

Snug the hardware, but do not fully tighten.



Step 8

Remove the M8 nuts, lock washers and flat washers from the running board.

Place the running board onto the brackets and align the M8 bolts with the slots in the brackets on the vehicle.



Step 9

Attach the running board to the brackets using six M8 bolts, lock washers, flat washers and nuts.

Snug the hardware, but do not fully tighten.



Step 10

Adjust and level the running board, centering it between the front and rear wheel wells.

With the running board in position, it is recommended to tighten all brackets to the vehicle first, followed by the running board connections.



Step 11

Repeat steps 1 through 10 on the passenger side of the vehicle.

Congratulations on the installation of your new ARIES AeroTread™ running boards.

With the running boards installed, periodic inspections should be performed to ensure all mounting hardware remains tight.

To protect your investment, see the 'Notes and Maintenance' section on the first page of this instruction manual.

