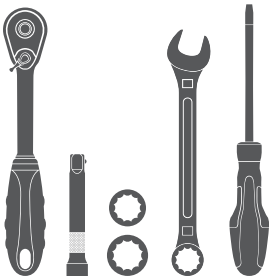


Parts List

1	Driver / left rocker step
1	Passenger / left rocker step
4	Hex bolt, 6mm
8	Flat washer, 6mm
4	Nylock nut, 6mm
4	Hex bolt, 8mm
4	Flat washer, 8mm
4	Lock washer, 8mm
4	Hex bolt, 10mm
4	Flat washer, 10mm
4	Lock washer, 10mm
4	Nut plate, 10mm

Tools Required

Ratchet	Extension
Socket, 10mm	Socket, 16mm
Wrench, 10mm	Flathead screwdriver



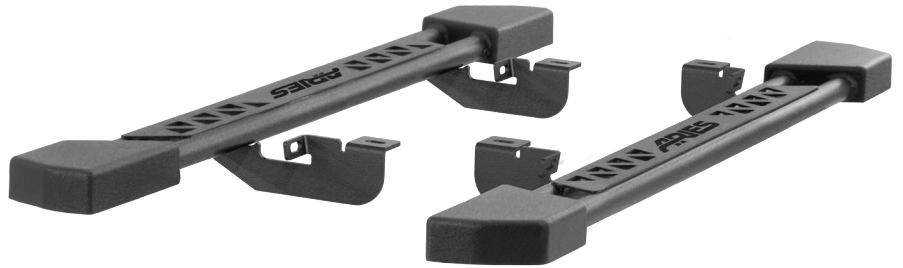
Level of Difficulty

Easy



Scan for helpful install tips

Product Image



Notes and Maintenance

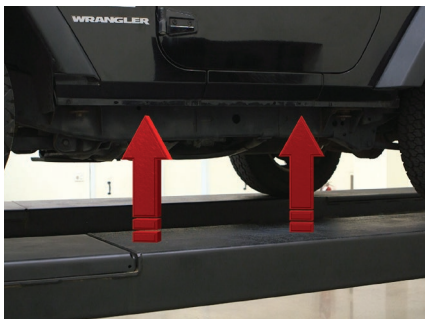
Before you begin installation, read all instructions thoroughly.

Proper tools will improve the quality of installation and reduce the time required.

For black finishes, mild soap may be used to clean the product.

Step 1

Locate the two mounting points along the bottom edge of the vehicle body.



Step 2

Starting on the driver side, locate the front mounting point.

Insert a 10mm nut plate into the opening, aligning it over the mounting hole.

On newer vehicles the mounting hole is supplied with a threaded fastener and the bolt plate is not required.

Note: There may be tape covering the mounting hole.



Step 3

At the rear mounting point, repeat step 2.

On newer vehicles the mounting hole is supplied with a threaded fastener and the bolt plate is not required.

Note: There may be tape covering the mounting hole.



Step 4

With help, lift the rocker step into position and align the brackets on the rocker step with the mounting points on the vehicle.

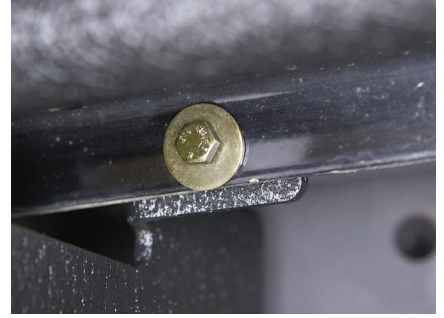


Step 5

Secure the rocker step rear attachment point with a 10mm hex bolt, lock washer and flat washer into the nut plate.

If the vehicle has factory threads, secure with the supplied 8mm hex nut, lock washer and flat washer.

Secure the rocker step front attachment point by inserting a 6mm hex bolt and flat washer on the outside, along with a flat washer and nylon lock nut on the inside.



Step 6

Repeat step 5 for the rear attachment point to finish the installation process for the driver side rocker step.

Tighten all hardware on the bars and brackets.



Step 7

Repeat steps 1 through 6 on the passenger side of the vehicle.

Congratulations on the installation of your new ARIES rocker steps.

With the rocker steps installed, periodic inspections should be performed to ensure all mounting hardware remains tight.

