

### Parts List

1	Driver / left rocker step
1	Passenger / right rocker step
12	Hex bolt, M6
24	Flat washer, M6
12	Hex lock nut, M6
6	Bolt plate, M12
6	Flat washer, M12
6	Hex lock nut, M12
6	M12 Plastic bolt retainer

### Tools Required

Torque wrench	Socket, 10mm
Level	Socket, 17mm
Wrench, 10mm	

### Torque Specifications

	Torque Specifications	
<b>METRIC</b>	M6 bolt	3 ft.-lbs.
	M8 bolt	7 ft.-lbs.
	M10 bolt	16 ft.-lbs.
	M12 bolt	28 ft.-lbs.
<b>SAE</b>	1/4" bolt	3 ft.-lbs.
	5/16" bolt	7 ft.-lbs.
	3/8" bolt	16 ft.-lbs.
	7/16" bolt	20 ft.-lbs.
	1/2" bolt	28 ft.-lbs.

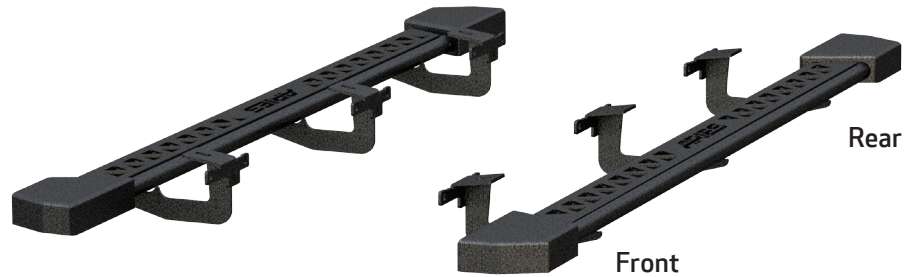
### Level of Difficulty

Easy



Scan for helpful install tips

### Product Image



### Notes and Maintenance

Before you begin installation, read all instructions thoroughly.

Proper tools will improve the quality of installation and reduce the time required.

For black finishes, mild soap may be used to clean the product.

Refer to the table to the left when securing hardware during the installation process to help prevent damage to the product or vehicle.

## Step 1

Starting on the driver side, locate the three mounting locations underneath the vehicle.



## Step 2

Locate the front mounting tab and remove the tape plug. Insert a M12 bolt plate into the opening. Slide a plastic bolt retainer over the thread of the bolt to hold the bolt in place.

Repeat process for the middle and rear mounting points.

With help, lift the rocker step into position and align the brackets on the rocker step with the mounting points on the vehicle



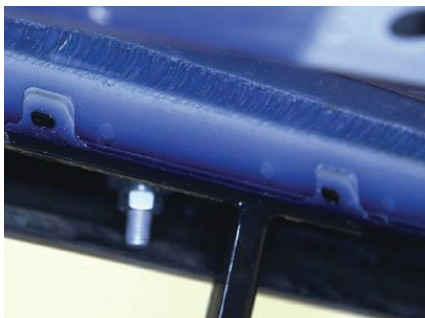
## Step 3

Secure the front mounting point using an M12 flat washer and M10 hex nut on the bolt plate.

Finish securing the front mounting bracket by inserting an M6 hex bolt and an M6 flat washer through the second and third mounting holes and secure using an M6 flat washer and M6 hex lock nut on the inside of the bracket.

Repeat this process for middle and rear mounting brackets.

With the board in position, tighten all hardware to the recommended torque specifications on page one.



## Step 4

Repeat steps 1 through 3 on the passenger side of the vehicle.

Congratulations on the installation of your new ARIES rocker steps.

With the rocker steps installed, periodic inspections should be performed to ensure all mounting hardware remains tight.

