

### Parts List

1	Driver / left side rocker step
1	Passenger / right side bar
18	Flat washer, M8
18	Lock nut, M8
18	Plastic spacer, M8

### Tools Required

Torque wrench	Extension
Socket, 13mm	

### Torque Specifications

	Torque Specifications	
<b>METRIC</b>	M6 bolt	3 ft.-lbs.
	M8 bolt	7 ft.-lbs.
	M10 bolt	16 ft.-lbs.
	M12 bolt	28 ft.-lbs.
<b>SAE</b>	1/4" bolt	3 ft.-lbs.
	5/16" bolt	7 ft.-lbs.
	3/8" bolt	16 ft.-lbs.
	7/16" bolt	20 ft.-lbs.
	1/2" bolt	28 ft.-lbs.

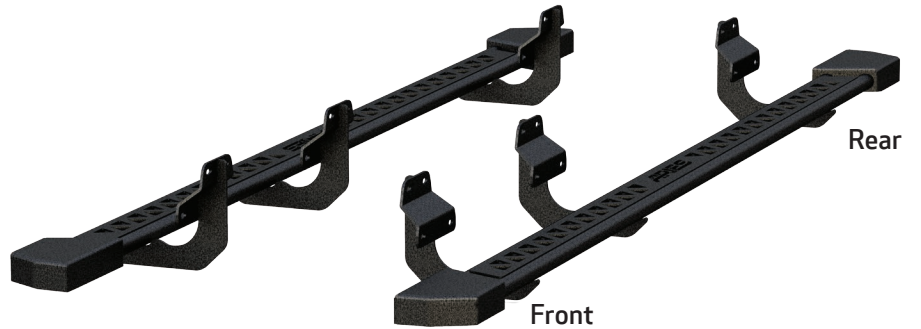
### Level of Difficulty

Easy



Scan for helpful install tips

### Product Image



### Notes and Maintenance

- Before you begin installation, read all instructions thoroughly.
- Proper tools will improve the quality of installation and reduce the time required.
- For black finishes, mild soap may be used to clean the product.
- Refer to the table to the left when securing hardware during the installation process to help prevent damage to the product or vehicle.

### Step 1

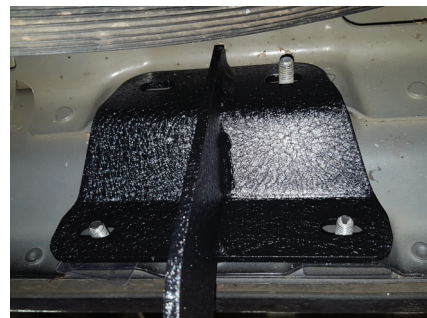
Starting on the driver-side, locate the three mounting locations underneath the vehicle.



### Step 2

Place plastic spacers on the M8 tabs

With help, lift the driver-side rocker step up to the vehicle. Align the mounting holes on the rocker step with the mounting points on the vehicle.



### Step 3

Secure the rocker step to the vehicle using two M8 lock nuts and two M8 flat washers.

Repeat step 2 and the above process to secure the middle and rear mounting brackets.

With the rocker step in position, tighten all mounting hardware to the recommended torque specifications listed in the table on the first page.



### Step 4

Repeat steps 1 through 3 on the passenger side of the vehicle.

Congratulations on the installation of your ARIES rocker steps.

With the rocker steps installed, periodic inspections should be performed to ensure all mounting hardware remains tight.

