

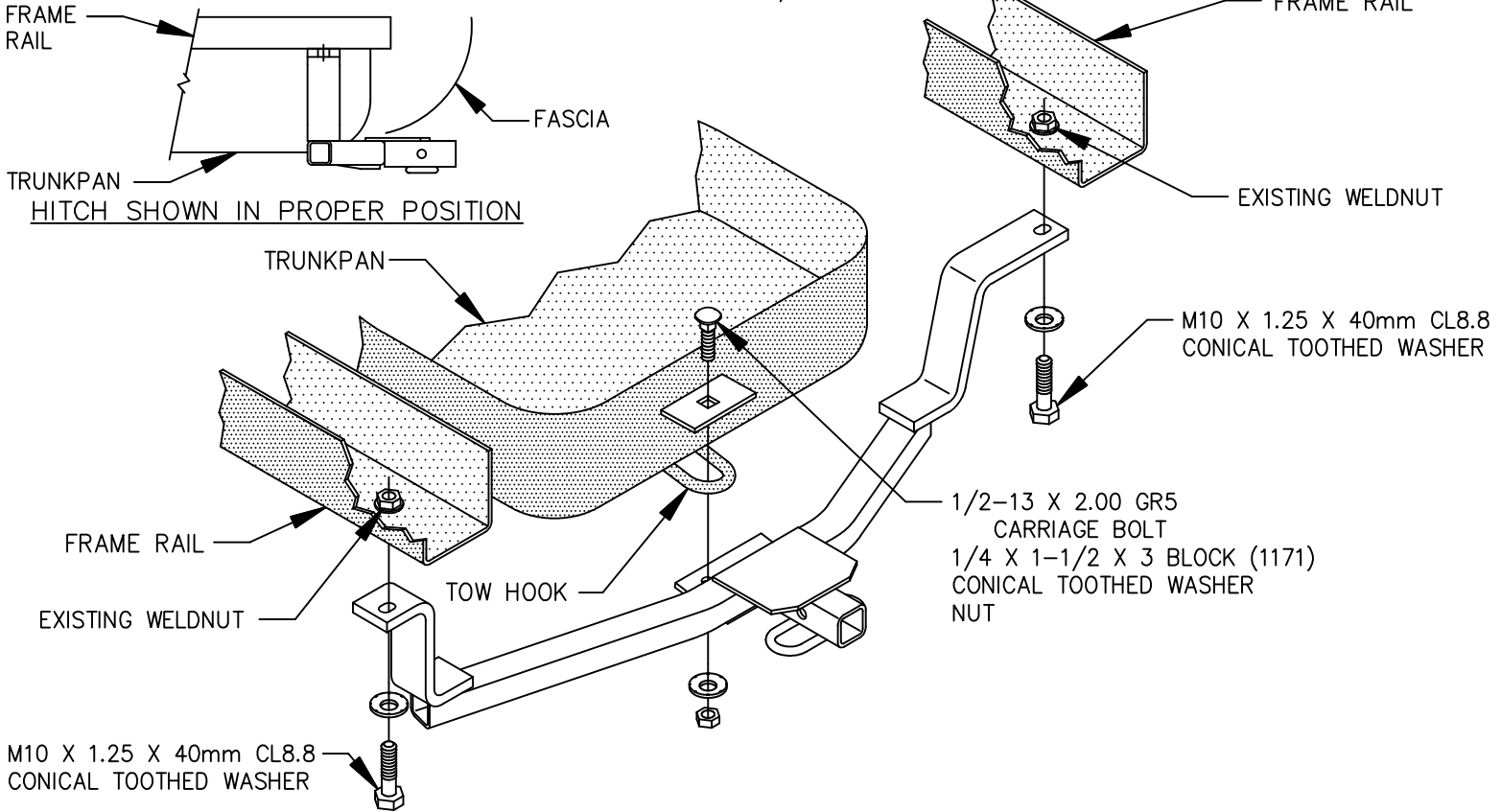
SPORTFRAME[®]

INSTALLATION INSTRUCTIONS

VEHICLE	HITCH NO.
KIA OPTIMA	24709 60244 77261

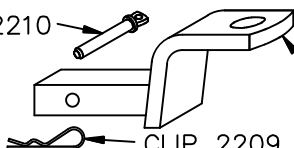
EQUIPMENT REQUIRED: NONE
 WIRING ACCESS LOCATION: PC3, PC4
 DRILL BITS: NONE
 HITCH REQUIRES 1/2" PIN AND CLIP
 WRENCHES: (TIGHTEN ALL FASTENERS WITH TORQUE WRENCH) 14mm, 17mm, 7/8

2000 LB MAX GROSS TRAILER WT
 200 LB MAX TONGUE WEIGHT
 DO NOT EXCEED TOWING VEHICLE RATINGS



1. REMOVE TWO (2) EXISTING BOLTS FROM FRAME.
2. INSTALL CARRIAGE BOLT & BLOCK (1171) THRU TOW HOOK AS SHOWN ABOVE.
3. RAISE HITCH INTO POSITION AND INSTALL TWO (2) M10 BOLTS AND CONICAL TOOTHED WASHERS.
4. INSTALL CONICAL TOOTHED WASHER & NUT ON CARRIAGE BOLT.

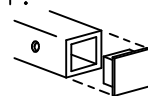
TIGHTEN ALL M10 CL8.8 FASTENERS TO 38 LB-FT.
 TIGHTEN ALL 1/2 GR5 FASTENERS TO 75 LB-FT.

DESIGNED FOR USE WITH  PIN 2210 CLIP 2209 (SOLD SEPARATELY)	DRAWBAR REPLACEMENT KIT (INCLUDES PIN & CLIP) 3593 NOTE: REPLACEMENT DRAWBAR AVAILABLE ONLY IN KIT. PINS & CLIPS AVAILABLE SEPARATELY.
--	--

USE ONLY THE DRAWBAR SHOWN FOR CORRECT BUMPER CLEARANCE AND HEIGHT.
 DRAWBAR MUST BE USED IN THE RISE POSITION ONLY.

REMOVE DRAWBAR WHEN NOT TOWING
 TO PROTECT DRAWBAR OPENING IN HITCH WHEN NOT TOWING,
 INSERT COVER #2211 (PURCHASED SEPARATELY).

THIS PRODUCT COMPLIES WITH SAFETY SPECIFICATIONS AND REQUIREMENTS FOR CONNECTING DEVICES AND TOWING SYSTEMS OF THE STATE OF NEW YORK AND V.E.S.C. REGULATION V-5.



APPROX WEIGHT (LB.)	19	FASTENER KIT NO.	F24709
---------------------	----	------------------	--------

NOTE: Check hitch frequently, making sure all fasteners and ball are properly tightened. If hitch is removed, plug all holes in trunk pan or other body panels to prevent entry of water and exhaust fumes. A hitch or ball which has been damaged should be removed and replaced. Observe safety precautions when working beneath a vehicle and wear eye protection. Follow car maker's specs for maximum trailer weight and tongue weight. Do not cut access or attachment holes with a torch.

Cequent Performance Products
 Plymouth, Michigan

PRINTED IN MEXICO