

INSTALLATION INSTRUCTIONS

VEHICLE

PONTIAC BONNEVILLE SSE, SSEi

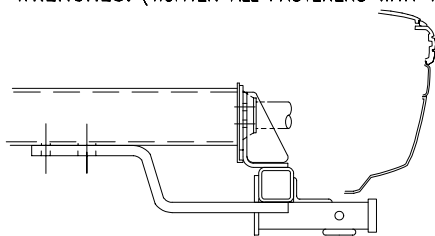
EQUIPMENT REQUIRED:

WIRING ACCESS LOCATION: PC3, PC4

DRILL BITS: 1/2

WRENCHES: (TIGHTEN ALL FASTENERS WITH TORQUE WRENCH) 9/16, 10mm, 13mm, 15mm

3500 LB MAX GROSS TRAILER WT
300 LB MAX TONGUE WEIGHT
DO NOT EXCEED TOWING VEHICLE RATINGS



HITCH SHOWN INSTALLED IN PROPER POSITION

HOLES TO BE DRILLED

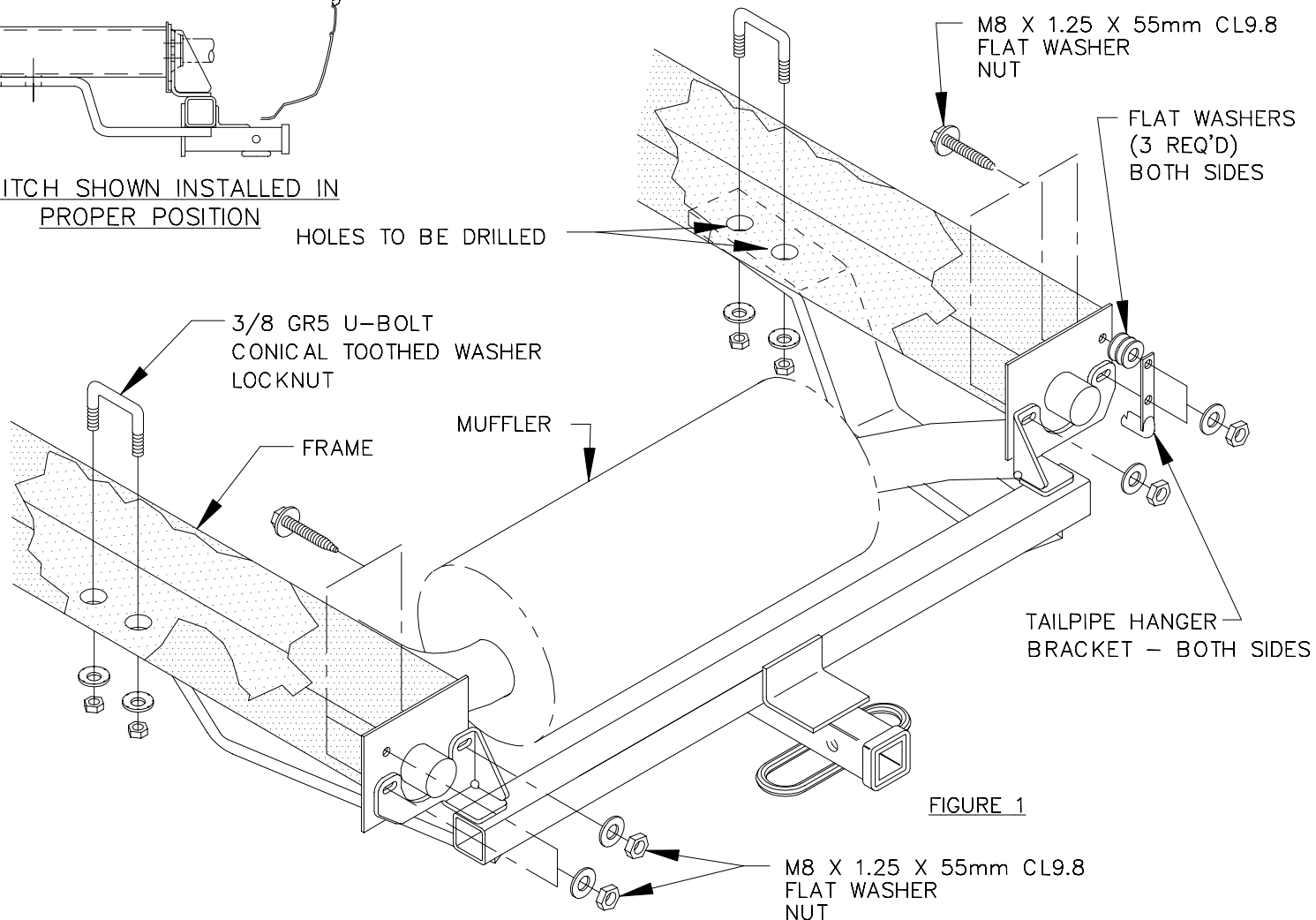
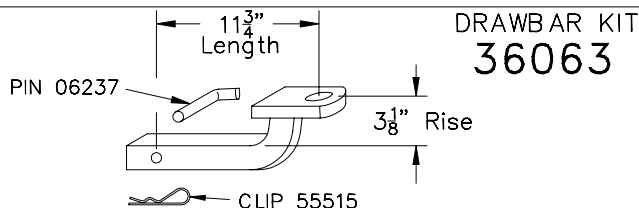


FIGURE 1

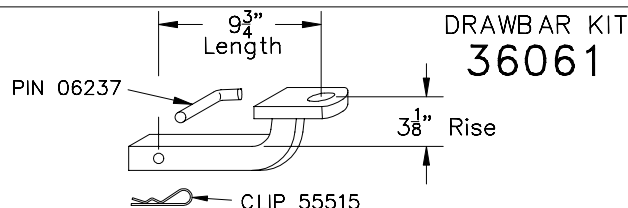
TIGHTEN U-BOLTS EVENLY WITH HAND TORQUE WRENCH. DO NOT USE IMPACT WRENCH.

STANDARD DRAWBAR



DRAWBAR KIT
36063

OPTIONAL DRAWBAR (SOLD SEPERATELY) 92-95 BONNEVILLE SSE & SSEi ONLY



DRAWBAR KIT
36061

USE ONLY THE DRAWBAR SHOWN FOR CORRECT BUMPER CLEARANCE AND HEIGHT.
DRAWBAR MUST BE USED IN THE RISE POSITION ONLY.

THIS PRODUCT COMPLIES WITH SAFETY SPECIFICATIONS AND REQUIREMENTS FOR CONNECTING DEVICES AND TOWING SYSTEMS OF THE STATE OF NEW YORK, V.E.S.C. REGULATION V-5 AND SAE J684.

APPROX WEIGHT (LB.)	FASTENER KIT
37	1130-809

NOTE: Check hitch frequently, making sure all fasteners and ball are properly tightened. If hitch is removed, plug all holes in trunk pan or other body panels to prevent entry of water and exhaust fumes. A hitch or ball which has been damaged should be removed and replaced. Observe safety precautions when working beneath a vehicle and wear eye protection. Follow car maker's specs for maximum trailer weight and tongue weight. Do not cut access or attachment holes with a torch.

TOWING PRODUCTS
Plymouth, Michigan

INSTALLATION INSTRUCTIONS

VEHICLE

PONTIAC BONNEVILLE SSE, SSEi

3500 LB MAX GROSS TRAILER WT
300 LB MAX TONGUE WEIGHT
DO NOT EXCEED TOWING VEHICLE RATINGS

TIGHTEN U-BOLTS EVENLY WITH HAND TORQUE WRENCH. DO NOT USE IMPACT WRENCH.

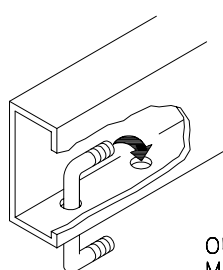


FIG. 2

OUTBOARD FASTENERS
M8 X 55mm CL9.8
FLAT WASHERS
NUT

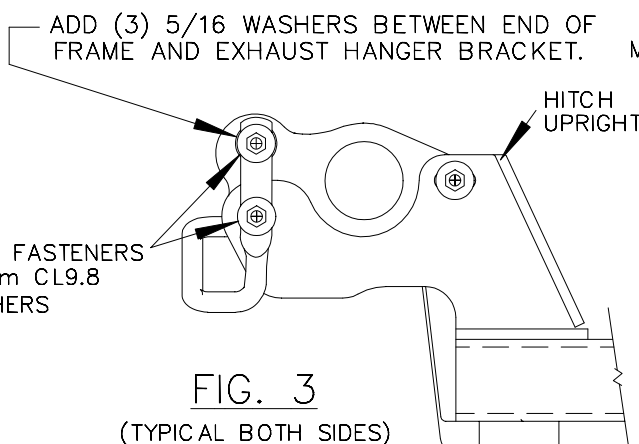


FIG. 3

(TYPICAL BOTH SIDES)

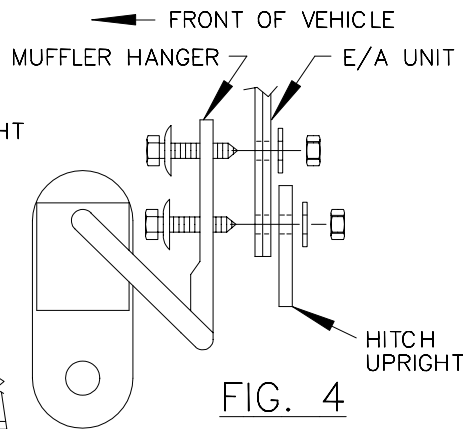


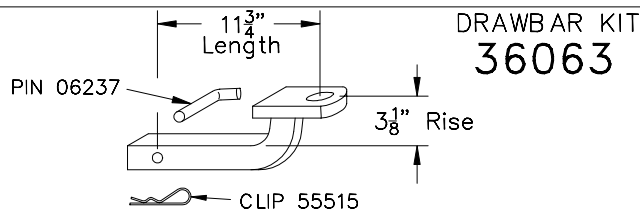
FIG. 4

(TYPICAL BOTH SIDES)

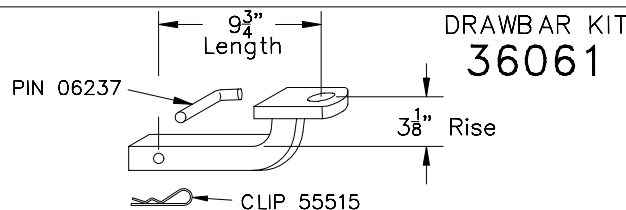
1. SUPPORT MUFFLER ASSEMBLY WITH A WIRE OR JACK TO PREVENT EXCESS TRAVEL WHICH COULD DAMAGE EXHAUST SYSTEM.
2. REMOVE ALL THREE (3) ENERGY ABSORBER (E/A) UNIT MOUNTING BOLTS FROM EACH SIDE OF FRAME.
3. POSITION THE HITCH ON THE VEHICLE AS SHOWN AND LOOSELY INSTALL TWO M8 BOLTS PROVIDED (ONE EACH SIDE). USE THE HITCH SIDE ARMS AS A TEMPLATE TO DRILL FOUR (4) HOLES IN THE FRAME.
NOTE: THE SIDE ARMS MUST SIT FLAT AGAINST THE VEHICLE FRAME. CHISEL OR DRILL OUT RIVETS HOLDING HEAT SHIELD UNDER SIDE ARMS AS REQUIRED. ALSO, BEND HEAT SHIELD AS NEEDED.
4. LOWER SIDE ARMS AND INSERT THE 3/8 U-BOLTS THROUGH THE FRAME AS SHOWN IN FIG. 2. RAISE SIDE ARMS INTO POSITION AND INSTALL THE 3/8 CONICAL WASHERS AND NUTS ON THE U-BOLTS.
5. USE THREE (3) 5/16 FLAT WASHERS PROVIDED TO SHIM SPACE BETWEEN EXHAUST BRACKET AND THE UPPER OUTBOARD ATTACHMENT FOR E/A UNIT (SEE FIG. 3). USE FASTENERS PROVIDED TO ATTACH EXHAUST HANGER BRACKET. DEFORMATION OF SHEET METAL FLANGES ON E/A MOUNTING SURFACES IS PERMISSIBLE WHEN FASTENERS ARE TIGHTENED. OPTIONAL: ON LATE MODELS WITH DUAL EXHAUST, REPOSITION THE MUFFLER HANGER BRACKET FORWARD OF THE E/A UNIT AS SHOWN IN FIGURE 4. INSTALL FASTENERS AS SHOWN IN FIGURE 1. **NOTE:** REMOVE RUBBER HANGER FROM BRACKET (USE LIQUID HAND SOAP) TO ALLOW ACCESS FOR INSTALLING M8 BOLTS.

TIGHTEN M8 CL9.8 FASTENERS TO 25 LB.-FT.
TIGHTEN 3/8 GR5 FASTENERS TO 31 LB.-FT.

STANDARD DRAWBAR



OPTIONAL DRAWBAR (SOLD SEPERATELY) 92-95 BONNEVILLE SSE & SSEi ONLY



USE ONLY THE DRAWBAR SHOWN FOR CORRECT BUMPER CLEARANCE AND HEIGHT.
DRAWBAR MUST BE USED IN THE RISE POSITION ONLY.

THIS PRODUCT COMPLIES WITH SAFETY SPECIFICATIONS AND REQUIREMENTS FOR CONNECTING DEVICES AND TOWING SYSTEMS OF THE STATE OF NEW YORK, V.E.S.C. REGULATION V-5 AND SAE J684.

APPROX WEIGHT (LB.)

NOTE: Check hitch frequently, making sure all fasteners and ball are properly tightened. If hitch is removed, plug all holes in trunk pan or other body panels to prevent entry of water and exhaust fumes. A hitch or ball which has been damaged should be removed and replaced. Observe safety precautions when working beneath a vehicle and wear eye protection. Follow car maker's specs for maximum trailer weight and tongue weight. Do not cut access or attachment holes with a torch.

TOWING PRODUCTS
Plymouth, Michigan