

INSTALLATION INSTRUCTIONS

EQUIPMENT REQUIRED: ADJUSTABLE WRENCH, TIN SNIPS

WIRING ACCESS LOCATION: PC3, PC4

DRILL BITS: NONE

HITCH REQUIRES 1/2" PIN & CLIP

WRENCHES: (TIGHTEN ALL FASTENERS WITH TORQUE WRENCH) 3/4, 10mm, 13mm, 15mm

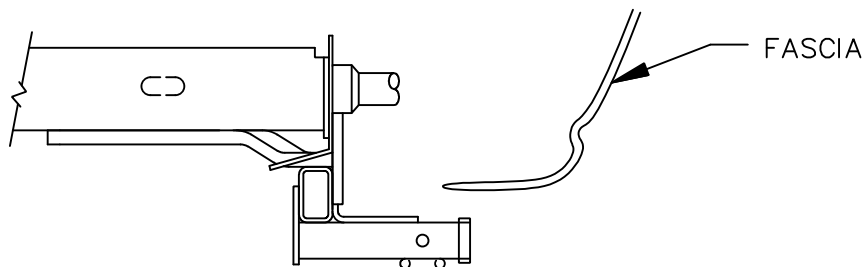
VEHICLE

FORD TAURUS (INCLUDING SHO)

MERCURY SABLE

LINCOLN CONTINENTAL

3500 LB MAX GROSS TRAILER WT
300 LB MAX TONGUE WEIGHT
DO NOT EXCEED TOWING VEHICLE RATINGS



HITCH SHOWN IN PROPER POSITION

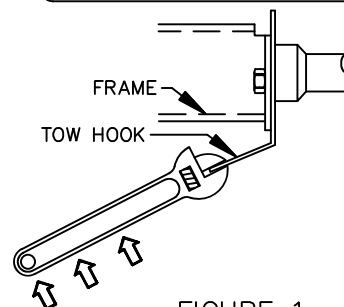


FIGURE 1.

86-95 TAURUS, SABLE, & CONTINENTAL
ROTATE TOW HOOK 1 1/4" UPWARD OUT OF THE WAY OF THE HITCH WITH AN ADJUSTABLE WRENCH.

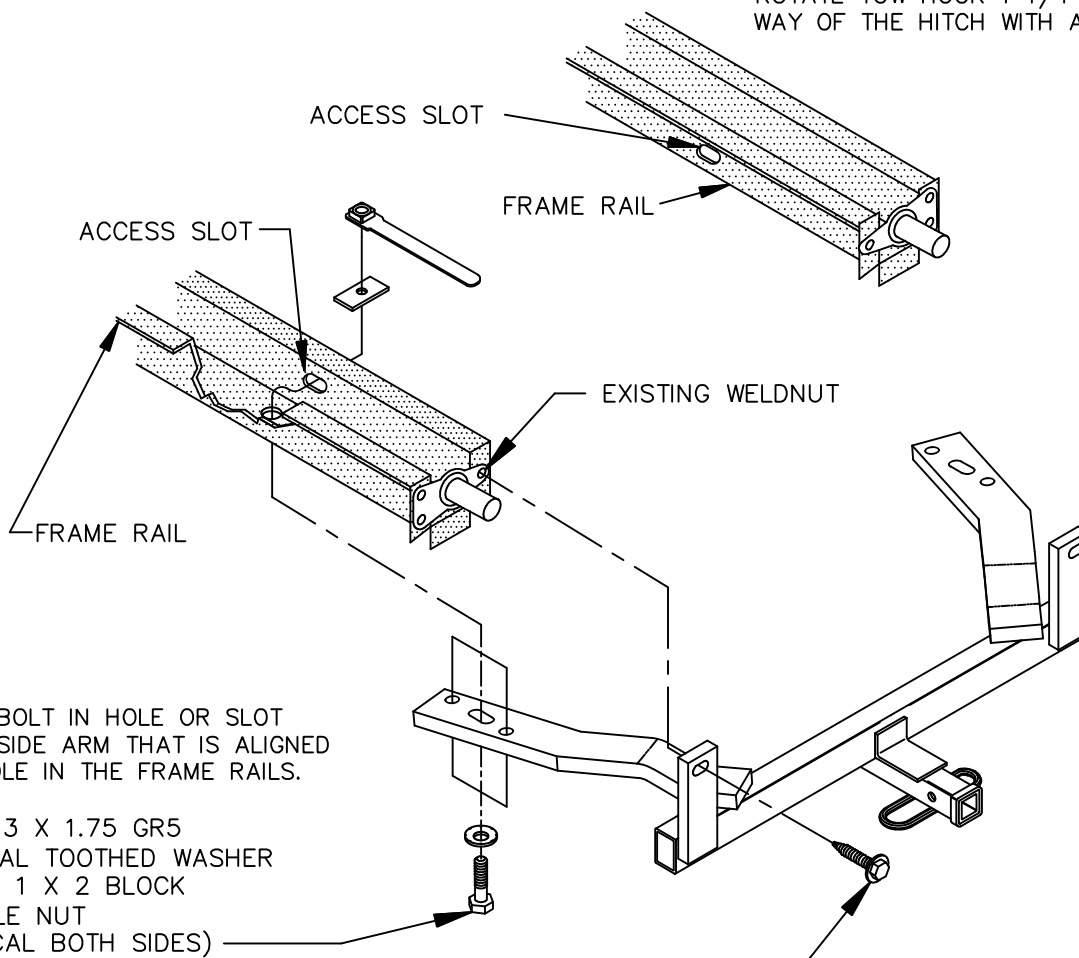


FIGURE 2.

NOTE:

INSERT BOLT IN HOLE OR SLOT IN THE SIDE ARM THAT IS ALIGNED WITH HOLE IN THE FRAME RAILS.

- 1/2-13 X 1.75 GR5 CONICAL TOOTHED WASHER
- 1/4 X 1 X 2 BLOCK
- HANDLE NUT (TYPICAL BOTH SIDES)

BOLT/SPRING WASHER ASSY. M10 X 1.50 X 45 CL9.8

THIS PRODUCT COMPLIES WITH SAFETY SPECIFICATIONS AND REQUIREMENTS FOR CONNECTING DEVICES AND TOWING SYSTEMS OF THE STATE OF NEW YORK, V.E.S.C. REGULATION V-5 AND SAE J684.

APPROX WEIGHT (LB.)	FASTENER KIT
30	01130-855

NOTE: Check hitch frequently, making sure all fasteners and ball are properly tightened. If hitch is removed, plug all holes in trunk pan or other body panels to prevent entry of water and exhaust fumes. A hitch or ball which has been damaged should be removed and replaced. Observe safety precautions when working beneath a vehicle and wear eye protection. Follow car maker's specs for maximum trailer weight and tongue weight. Do not cut access or attachment holes with a torch.

Cequent Performance Products
Plymouth, Michigan

PRINTED IN MEXICO

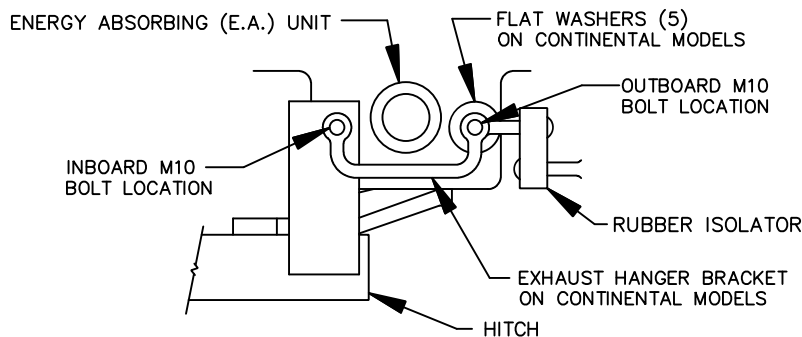


FIGURE 3.

88-94 CONTINENTALS WITH DUAL EXHAUST
TAURUS SHO WITH DUAL EXHAUST

HITCH & (5) FLAT WASHERS ARE SHOWN BETWEEN E.A. AND EXHAUST HANGER BRACKET

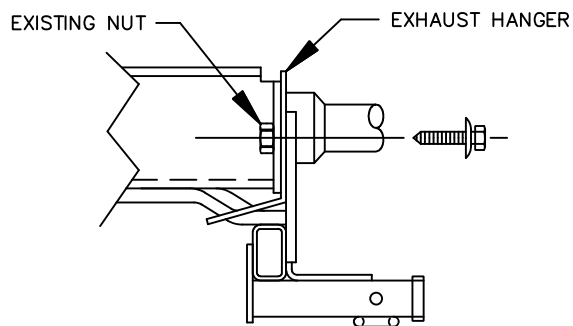


FIGURE 4.

95 & LATER CONTINENTALS

NOTE: SOME PRE-1987 TAURUS AND SABLE MODELS HAVE A HEAT SHIELD THAT PARTIALLY COVERS THE HITCH ATTACHING HOLE. REMOVE TWO (2) RIVETS AND TRIM HEAT SHIELD FOR PROPER CLEARANCE. SANDWICH SHIELD BETWEEN HITCH ARM AND VEHICLE FRAME, AND INSTALL HITCH AS DESCRIBED BELOW.

1. DETACH RUBBER ISOLATOR FROM EXHAUST HANGER BRACKET.

NOTE: 86-95 MODELS USE ADJUSTABLE WRENCH TO BEND TOW HOOK UPWARD APPROXIMATELY 1 1/4" AS SHOWN IN FIGURE 1.

NOTE: ON 96 AND LATER MODELS IF TOW HOOKS ARE PRESENT ON BUMPER, REMOVE AND REINSTALL FASTENERS.

2. REMOVE TWO (2) INBOARD E.A BOLTS, ONE (1) PER SIDE FROM E.A. UNIT (SEE FIGURE 2), DISCARD BOLTS.

NOTE: 88-94 CONTINENTALS AND TAURUS SHO WITH DUAL EXHAUST NEED TO HAVE INBOARD & OUTBOARD BOLTS REMOVED AND DISCARDED.

3. POSITION HITCH ON VEHICLE AND ATTACH WITH TWO (2) M10 BOLTS, ON THE INBOARD SIDE OF THE E.A., ONE PER SIDE, AS SHOWN IN FIGURES 2 AND 4.

NOTE: IN ADDITION, ON 88-94 CONTINENTALS AND TAURUS SHO WITH DUAL EXHAUST, REINSTALL EXHAUST HANGER BRACKETS WITH FIVE (5) 1/2" WASHERS PLACED ON EACH OUTBOARD SIDE AS SPACERS AND M10 BOLTS, ONE (1) PER SIDE, SEE FIG. 3.

FORWARD ATTACHMENT-NO DRILLING REQUIRED; USE EXISTING HOLES IN VEHICLE FRAME.

4. INSERT BLOCK AND HANDLE NUT THROUGH ACCESS SLOT. INSTALL HEX BOLT AND CONICAL TOOTHED WASHER THROUGH FRAME AND BLOCK INTO HANDLE NUT AS SHOWN IN FIGURE 2. ENSURE THAT HANDLE NUT CAN BE EASILY THREADED ONTO BOLT BEFORE INSTALLATION.

5. TIGHTEN BOLTS TO SPECIFIED TORQUE.

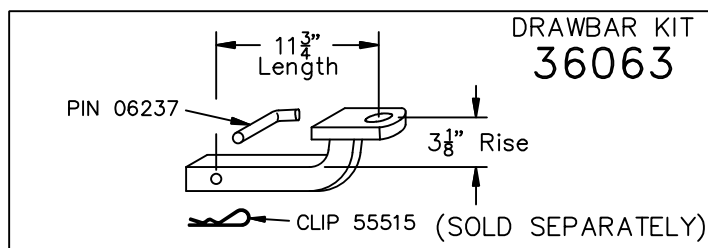
6. REATTACH RUBBER ISOLATOR TO EXHAUST HANGER BRACKET.

7. LOOSEN MUFFLER STRAP AND POSITION REARWARD ON MUFFLER (AS NEEDED) TO OBTAIN MAXIMUM CLEARANCE BETWEEN HITCH SIDE ARM AND MUFFLER. RETIGHTEN MUFFLER STRAP.

NOTE: THE FOUR (4) M10 NUTS SUPPLIED ARE USED FOR SHIPPING PURPOSES ONLY.

TIGHTEN ALL M10 CL9.8 FASTENERS TO 42 LB.-FT.

TIGHTEN ALL 1/2 GR5 FASTENERS TO 50 LB.-FT.



USE ONLY THE DRAWBAR SHOWN FOR CORRECT BUMPER CLEARANCE AND HEIGHT.
DRAWBAR MUST BE USED IN THE RISE POSITION ONLY.

THIS PRODUCT COMPLIES WITH SAFETY SPECIFICATIONS AND REQUIREMENTS FOR CONNECTING DEVICES AND TOWING SYSTEMS OF THE STATE OF NEW YORK, V.E.S.C. REGULATION V-5 AND SAE J684.

APPROX WEIGHT (LB.)	FASTENER KIT
30	01130-855

NOTE: Check hitch frequently, making sure all fasteners and ball are properly tightened. If hitch is removed, plug all holes in trunk pan or other body panels to prevent entry of water and exhaust fumes. A hitch or ball which has been damaged should be removed and replaced. Observe safety precautions when working beneath a vehicle and wear eye protection. Follow car maker's specs for maximum trailer weight and tongue weight. Do not cut access or attachment holes with a torch.

Cequent Performance Products
Plymouth, Michigan

PRINTED IN MEXICO