

Parts List

| | |
|----|---|
| 1 | Driver / left side bar |
| 1 | Passenger / right side bar |
| 5 | Mounting bracket, universal |
| 1 | Def-tank bracket |
| 1 | Def-tank L-bracket |
| 6 | Bolt plate, stainless steel |
| 24 | Flat washer, M6 |
| 24 | Nylock nut, M6 x 1, CL8.8 |
| 11 | Flat washer, M8 |
| 11 | Lock washer, M8 |
| 11 | Hex head cap screw, M8 x 1.25 - 30mm, CL8.8 |
| 11 | Clip nut, M8 |
| 3 | Flat washer, M10 |
| 2 | Lock washer, M10 |
| 1 | Hex head cap screw, M10 x 1.5 - 30mm, CL8.8 |
| 2 | Nut, M10 x 1.5, CL8.8 |
| 1 | Bolt plate, M10 |

Additional Hardware*

| | |
|----|---------------------------------|
| 24 | T-bolt, M8 x 1.25 - 25mm, CL8.8 |
| 24 | Flat washer, M8 |
| 24 | Lock washer, M8 |
| 24 | Hex nut, M8 x 1, CL8.8 |

* Aluminum boards are supplied with additional hardware. Quantities listed are in addition to the standard supplied hardware.

Tools Required

| | |
|-------------------|--------------|
| Ratchet | Socket, 10mm |
| Ratchet extension | Socket, 13mm |
| Wrench, 16mm | Socket, 16mm |
| Level | |

Level of Difficulty

Easy



Scan for helpful install tips

Product Image



Notes and Maintenance

Before you begin installation, read all instructions thoroughly.

Proper tools will improve the quality of installation and reduce the time required.

To protect the product, wax after installing. Regular waxing is recommended to add a protective layer over the finish. Do not use any type of polish or wax that may contain abrasives that could damage the finish.

For stainless steel and aluminum, polish may be used to clear small scratches and scuffs on the finish. Mild soap may be used also to clean the product.

Refer to the table to the left when securing hardware during the installation process to help prevent damage to the product or vehicle.

Torque Specifications

| METRIC | | SAE | |
|----------|-------------|------------|-------------|
| M6 bolt | 3 ft.-lbs. | 1/4" bolt | 3 ft.-lbs. |
| M8 bolt | 7 ft.-lbs. | 5/16" bolt | 7 ft.-lbs. |
| M10 bolt | 16 ft.-lbs. | 3/8" bolt | 16 ft.-lbs. |
| M12 bolt | 28 ft.-lbs. | 7/16" bolt | 20 ft.-lbs. |
| | | 1/2" bolt | 28 ft.-lbs. |

Step 1

Locate the mounting tabs along the bottom edge of the vehicle body.

For crew cab models, use the first, second and fifth mount locations.

For Extended cab and Double cab models, use the first, second and fourth mount locations.

For Regular cab models, only use two brackets per side.



Step 2

2A - Starting at the front driver side mount location, place a universal bracket over the two factory mount locations.

Attach the bracket to the body panel using two M8 hex bolts with lock and flat washers.

The bolts should be snug, but do not tighten at this time.



2B - Some models will require the use of an M8 clip nut for the bottom mount location if the vehicle is not supplied with the threaded mount.

If required, slide an M8 clip nut over the mounting tab with the nut on the top surface.

Attach the bracket to the body panel using an M8 hex bolt, lock and flat washer.



Step 3

Repeat steps 2A and 2B to install the second bracket over the second mounting tab location from step 1.



Step 4

Locate the fourth tab location from step 1 and remove the rubber plug from the access hole.

Insert a clip nut through the access hole and align it over the adjacent small hole.



Step 5

Repeat step 2B to secure the bottom of the bracket with an M8 clip nut, bolt, lock and flat washer.

Attach the bracket to the body panel using an M8 hex bolt, lock and flat washer.



Step 6

Carefully place the side bar onto the brackets with the larger step pad towards the front of the vehicle.



Step 7A - For Polished Stainless Steel Side Bars

Insert the bolt plate into the bottom channel of the side bar, and attach with a M6 flat washer and nylock nut.

Snug the hardware with a 10mm socket. To allow for adjustments, do not over tighten.



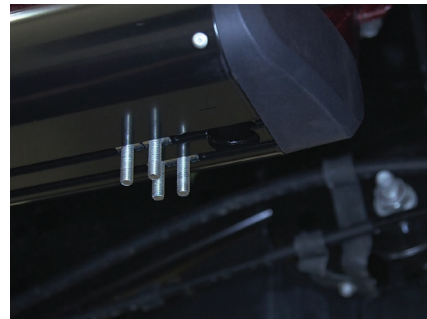
Step 7B - For Semi-Gloss Black, Aluminum Side Bars

Insert four T-bolts into the bottom channels of the side bar as shown.

Slide the bolts forward to the front bracket and insert them through the bracket cradle. Repeat this for the middle and rear brackets.

Secure the side bar to the brackets using twelve M8 flat washers, lock washers and hex nuts.

Snug the hardware, but do not fully tighten.



Step 8

Adjust and level the side bar, centering it between the front and rear wheel wells.

With the side bar in position, it is recommended to tighten all brackets to the vehicle first, followed by the side bar connections.



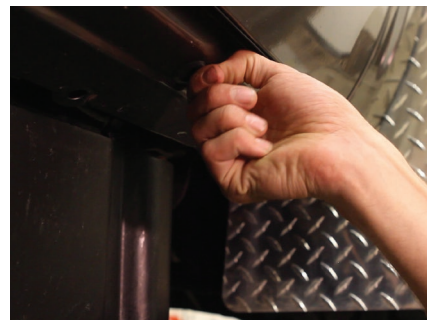
Step 9

Moving to the passenger side of the vehicle, locate the front mounting bracket location. Due to the DEF tank, a special two-piece bracket is required in this location.

Begin the install by locating the round factory hole in the bottom of the rocker panel closest to the front mounting tab.

Remove the plastic plug to expose the mounting hole in the rocker panel.

Note: On 2017 models, the DEF tank shield will need to be removed and trimmed before reinstallation.



Step 10

Insert the M10 bolt plate into the access hole in the rocker panel.

Place the DEF tank L-bracket over the M10 stud and secure it with a flat washer, lock washer and nut.

Do not fully tighten the hardware at this time.



Step 11

Slide an M8 clip nut over the mounting tab and fasten the DEF tank bracket with an M8 hex bolt, flat washer and lock washer.

Do not fully tighten the hardware at this time.



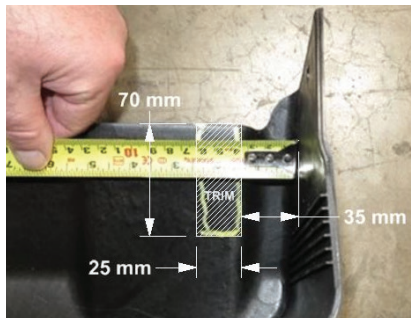
Step 12

Bolt the mounting bracket to the side of the 'L' support bracket using a M10 hex bolt, two flat washers, a lock washer and nut.



Step 13

For 2017 diesel models only: Trim DEF tank shield as needed and reinstall.



Step 14

Repeat steps 3 through 8 on the passenger side of the vehicle.

Congratulations on the installation of your new ARIES 6" oval side bars.

With the side bars installed, periodic inspections should be performed to ensure all mounting hardware remains tight.

To protect your investment, see the 'Notes and Maintenance' section on the first page of this instruction manual.

