

Parts List

1	Driver / left side bar
1	Passenger / right side bar
1	Mounting bracket, driver-side front
3	Mounting bracket, universal
4	Bolt plate, 6mm
16	Flat washer, 6mm
16	Nylock nut, 6mm
5	Hex bolt, 8mm
5	Flat washer, 8mm
5	Lock washer, 8mm
4	Hex bolt, 10mm
4	Flat washer, 10mm
4	Lock washer, 10mm
4	Nut & bolt plate, 12mm
4	Flat washer, 12mm
4	Lock washer, 12mm
4	Hex nut, 12mm
4	Plastic bolt retainer, 12mm

Additional Hardware*

16	T-bolt, M8 x 1.25 - 25mm, CL8.8
16	Flat washer, M8
16	Lock washer, M8
16	Hex nut, M8 x 1, CL8.8

* Aluminum side bars are supplied with additional hardware. Quantities listed are in addition to the standard supplied hardware.

Tools Required

Torque wrench	Level
Socket, 10mm	Socket, 16mm
Socket, 13mm	Socket, 18mm



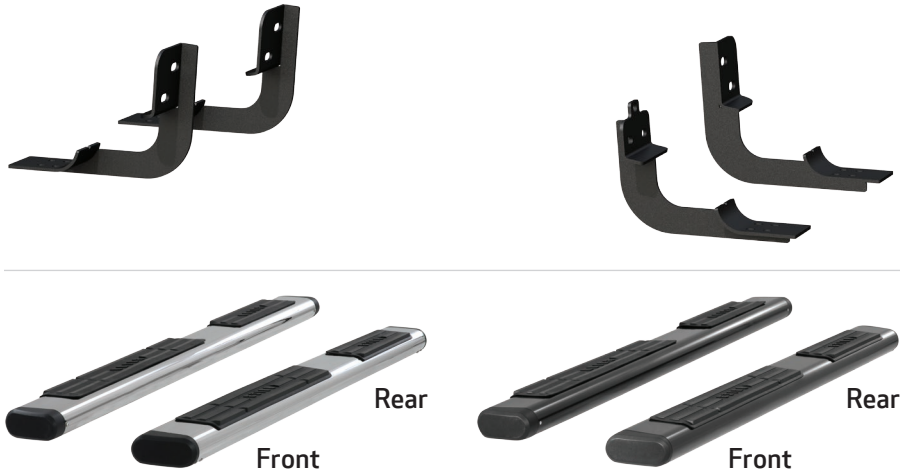
Level of Difficulty

Easy



Scan for helpful install tips

Product Image



Notes and Maintenance

Before you begin installation, read all instructions thoroughly.

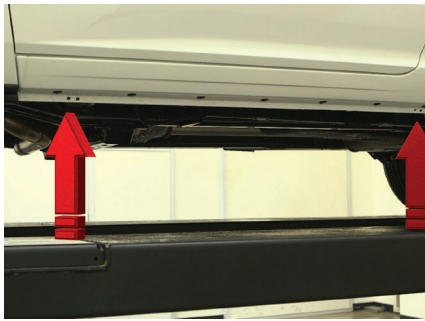
Proper tools will improve the quality of installation and reduce the time required.

To protect the product, wax after installing. Regular waxing is recommended to add a protective layer over the finish. Do not use any type of polish or wax that may contain abrasives that could damage the finish.

For stainless steel and aluminum, polish may be used to clear small scratches and scuffs on the finish. Mild soap may be used also to clean the product.

Step 1

Starting on the driver side, locate the two mounting locations underneath the vehicle, on the rocker panel.



Step 2

Locate the driver-side front mounting tab. Remove the factory tape covering the oval mounting tab on the inner body panel.



Step 3

Insert a 12mm bolt and nut plate into the opening. Slide a plastic bolt retainer over the threads of the bolt to hold the bolt in place.

Position the bolt plate so the welded nut is aligned over either of the lower mounting holes.



Step 4

Place the front driver-side bracket onto the vehicle and secure with a 12mm flat washer, 12mm lock washer and 12mm hex nut.

Snug the hardware, but do not fully tighten.



Step 5

Rotate the bolt and nut plate until the threaded nut lines up with the mounting location. Secure with a 10mm hex bolt, 10mm lock washer and 10mm flat washer.



Step 6

Repeat steps 2 through 5 to install the rear driver-side mounting bracket.



Step 7

Carefully place the side bar onto the brackets.



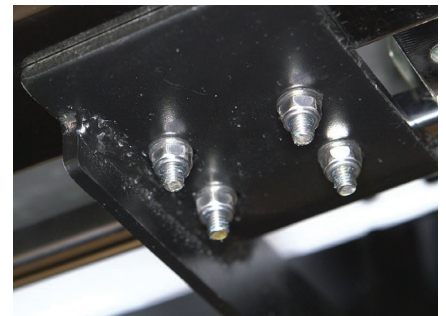
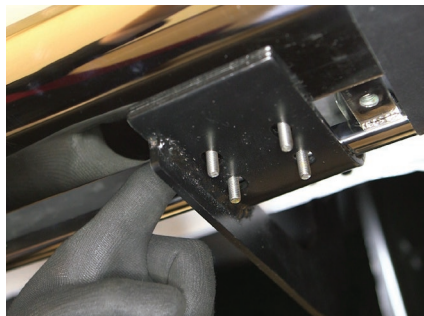
Step 8A - For Polished Stainless Steel Side Bars

Insert a bolt plate into the bottom channels of the side bar as shown.

Slide the bolt plate forward to the front bracket and insert the studs through the bracket cradle. Repeat this for the rear brackets.

Secure the side bar to the brackets using eight 6mm flat washers and nylock nuts.

Snug the hardware, but do not fully tighten.



Step 8B - For Semi-Gloss Black, Aluminum Side Bars

Insert four T-bolts into the bottom channels of the side bar as shown.

Slide the bolts forward to the front bracket and insert them through the bracket cradle. Repeat this for the rear bracket.

Secure the side bar to the brackets using eight 8mm flat washers, lock washers and hex nuts.

Snug the hardware, but do not fully tighten.



Step 9

Adjust and level the side bar.

With the side bar in position, it is recommended to tighten all brackets to the vehicle first, followed by the side bar connections.



Step 10

Repeat steps 1 through 9 on the passenger side of the vehicle.

Congratulations on the installation of your new ARIES 6" oval side bars.

With the side bars installed, periodic inspections should be performed to ensure all mounting hardware remains tight.

To protect your investment, see the 'Notes and Maintenance' section on the first page of this instruction manual.

