

# INSTALLATION INSTRUCTIONS

EQUIPMENT REQUIRED: XX

WIRING ACCESS LOCATION: SUV3, SUV4

DRILL BITS: NONE

HITCH REQUIRES 5/8" PIN AND CLIP IF STABILIZING PIN IS NOT INSTALLED.

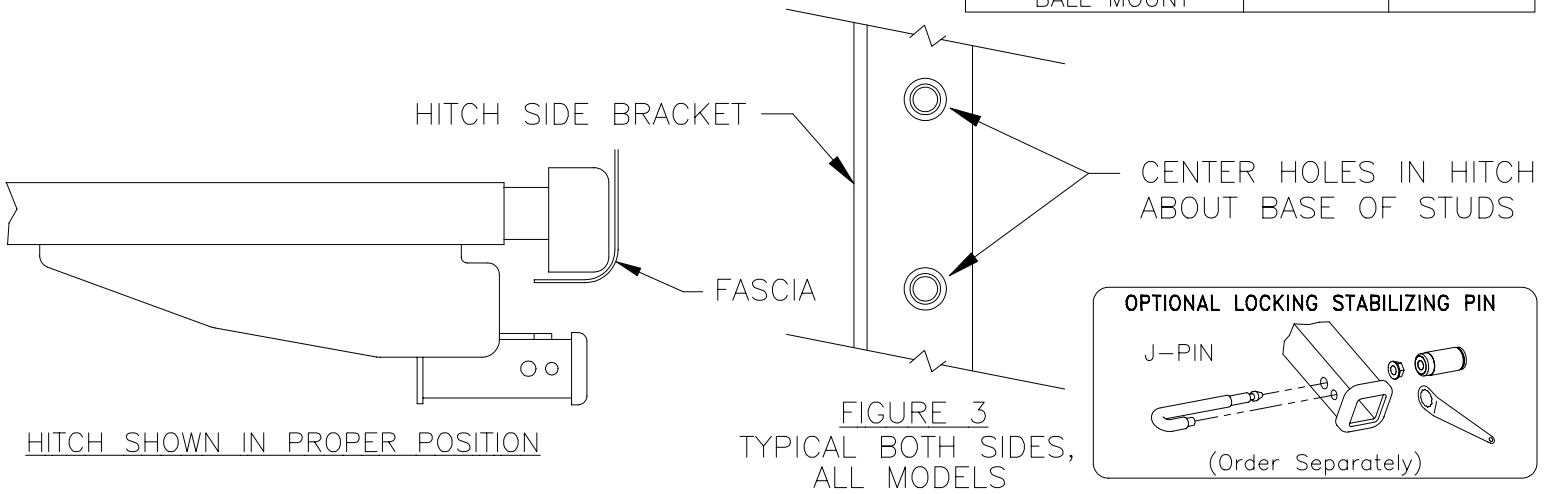
WRENCHES: (TIGHTEN ALL FASTENERS WITH TORQUE WRENCH) 18mm, 19mm

## VEHICLE

JEEP GRAND CHEROKEE

DO NOT EXCEED LOWER OF  
TOWING VEHICLE MFR'S RATINGS OR

HITCH TYPE ▼	MAX GROSS TRLR WT(LB)	MAX TONGUE WT(LB)
WEIGHT DISTRIBUTING	7500	750
WEIGHT CARRYING BALL MOUNT	5000	500



HITCH SHOWN IN PROPER POSITION

**NOTE:** TWO INSTALLATION OPTIONS ARE POSSIBLE DEPENDING ON VEHICLE CONFIGURATION. REFER TO SHEET 2 FOR FIGURES 1 AND 2.

VEHICLES EQUIPPED WITH CLOSED SIDED FUEL TANK SHIELD, USE FIGURE 1:

1. FUEL TANK SHIELD MUST BE SUPPORTED, BECAUSE SHIELD IS SECURED BY FASTENERS WHICH WILL BE REMOVED IN STEPS 2 & 3.
2. REMOVE NUTS AND FLAT WASHERS FROM THE TWO STUDS AT THE END OF THE FRAME AND DISCARD.
3. REMOVE BOLT AND WASHER ASSEMBLY FROM FORWARD ATTACHMENT AND DISCARD.
4. RAISE HITCH INTO POSITION OVER TWO EXISTING STUDS AT THE END OF THE FRAME, BEING CAREFUL TO CENTER THE HOLES IN THE HITCH AROUND THE BASE OF THE STUDS (SEE FIGURE 3). LOOSELY INSTALL CONICAL TOOTHED WASHERS AND NUTS SUPPLIED, BOTH SIDES.

**NOTE:** FUEL TANK SHIELD WILL BE SANDWICHED BETWEEN FRAME AND HITCH SIDE BRACKETS (SEE FIGURE 1).

5. INSTALL HEX BOLT, LOCK WASHER AND BLOCK INTO EXISTING WELDNUT AT FORWARD ATTACHMENT. DISCARD M12 NUT USED FOR SHIPPING PURPOSES ONLY.

**NOTE:** 3/4 DIAMETER HOLE IS FOR CLEARANCE AND DOES NOT REQUIRE A FASTENER.

TIGHTEN ALL FASTENERS TO 55 LB.-FT.

VEHICLES WITHOUT FUEL TANK SHIELD USE FIGURE 2:

1. RAISE HITCH INTO POSITION OVER TWO EXISTING STUDS AT THE END OF THE FRAME, BEING CAREFUL TO CENTER THE HOLES IN THE HITCH AROUND THE BASE OF THE STUDS (SEE FIGURE 3). LOOSELY INSTALL CONICAL TOOTHED WASHERS AND NUTS SUPPLIED, BOTH SIDES.
2. AT THE FORWARD ATTACHMENT, INSTALL HEX BOLT, LOCK WASHER AND BLOCK INTO WELDNUT.

**NOTE:** 3/4 DIAMETER HOLE IS FOR CLEARANCE AND DOES NOT REQUIRE A FASTENER.

TIGHTEN ALL FASTENERS TO 55 LB.-FT.

THIS PRODUCT COMPLIES WITH SAFETY SPECIFICATIONS AND REQUIREMENTS FOR CONNECTING DEVICES AND TOWING SYSTEMS OF THE STATE OF NEW YORK AND V.E.S.C. REGULATION V-5.

APPROX WEIGHT (LB.)	FASTENER KIT	FASTENER KIT NO.
41.8	1130-820	

**NOTE:** Check hitch frequently, making sure all fasteners and ball are properly tightened. If hitch is removed, plug all holes in trunk pan or other body panels to prevent entry of water and exhaust fumes. A hitch or ball which has been damaged should be removed and replaced. Observe safety precautions when working beneath a vehicle and wear eye protection. Follow car maker's specs for maximum trailer weight and tongue weight. Do not cut access or attachment holes with a torch.

**TOWING PRODUCTS**  
Plymouth, Michigan

# INSTALLATION INSTRUCTIONS

VEHICLE

JEEP GRAND CHEROKEE

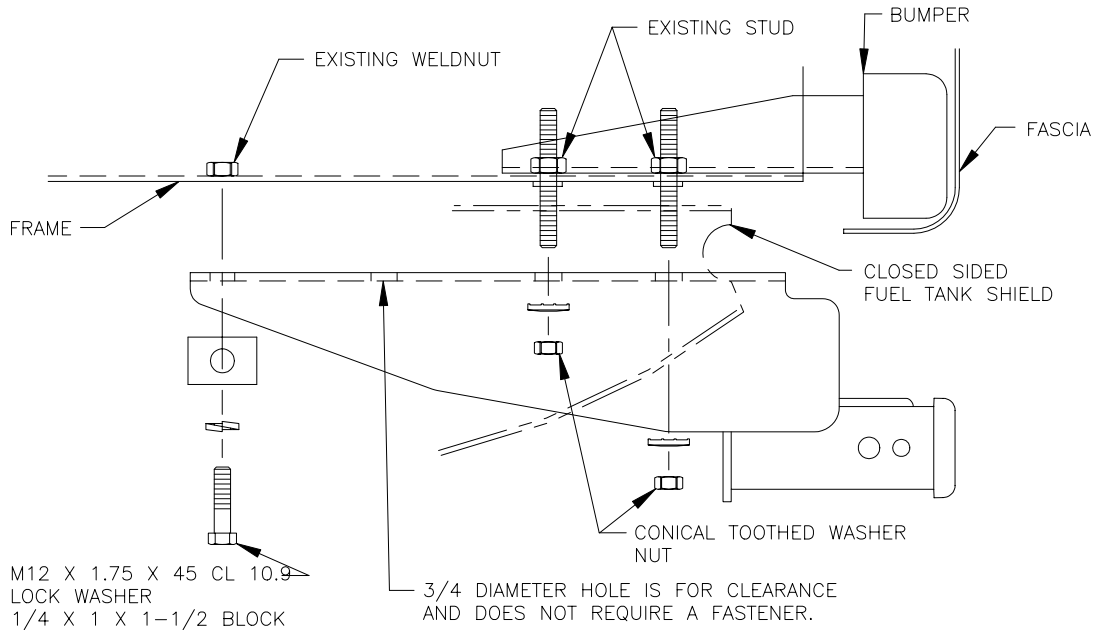


FIGURE 1  
VEHICLES EQUIPPED WITH CLOSED  
SIDED FUEL TANK SHIELD

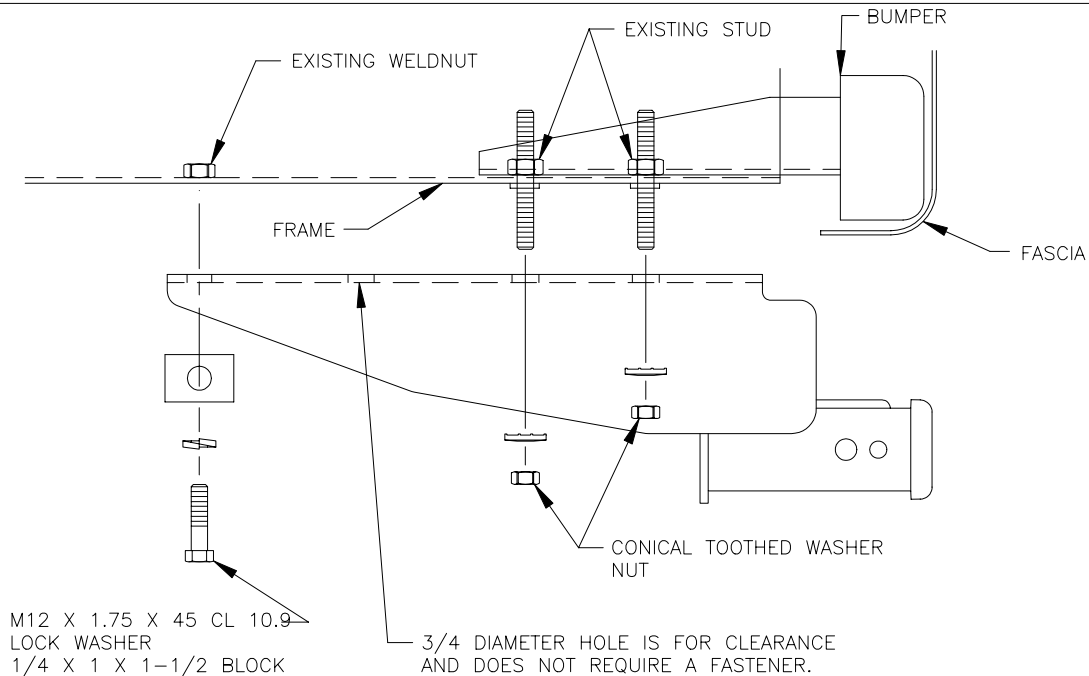


FIGURE 2  
VEHICLES WITHOUT FUEL TANK SHIELD

THIS PRODUCT COMPLIES WITH SAFETY SPECIFICATIONS AND REQUIREMENTS FOR CONNECTING DEVICES AND TOWING SYSTEMS OF THE STATE OF NEW YORK AND V.E.S.C. REGULATION V-5.

APPROX WEIGHT (LB.)	FASTENER KIT
41.8	1130-820

NOTE: Check hitch frequently, making sure all fasteners and ball are properly tightened. If hitch is removed, plug all holes in trunk pan or other body panels to prevent entry of water and exhaust fumes. A hitch or ball which has been damaged should be removed and replaced. Observe safety precautions when working beneath a vehicle and wear eye protection. Follow car maker's specs for maximum trailer weight and tongue weight. Do not cut access or attachment holes with a torch.

**TOWING PRODUCTS**  
Plymouth, Michigan