

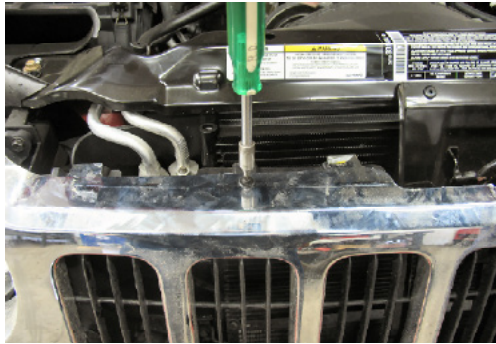


Strong As An Ox™

## BX1122 Installation Instructions 2005-07 Jeep Liberty

Serial No.

The upper grill and front fascia are removed for baseplate installation. Drilling is required. The BX8869 is available for the vehicle. Attachment Tabs are 20 inches center to center and a height of 19 inches.



1. Using the 20 torx socket, remove the two metric bolts from the top edge of grill. **NOTE: Some models may not have the torx metric bolts on the top edge of grill.**



2. Lift tab just above headlight assembly and pull that portion of the grill forward to release tab, both sides.



3. Lift the two tabs on the top edge of grill between headlights and pull grill center forward to release tabs.



4. Pull the top of grill forward and up, set grill aside. Remove the metric bolt just below the headlight assembly with the 10MM socket, both sides.



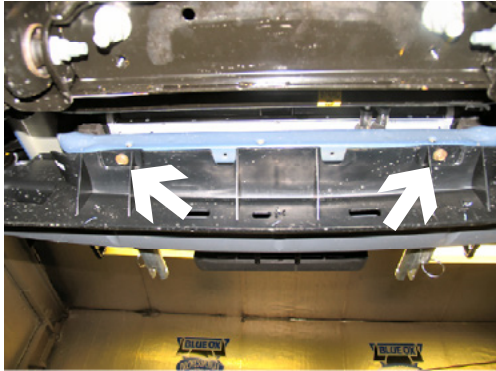
5. Remove the two christmas tree push pins just forward of the front tire, on wheel well, bolt sides. **Note: Some 2005 models may have rivets in place of the christmas tree. Remove with side cutters.**



6. Remove christmas tree push pin from lower edge of wheel well just forward of front tire, both sides (view of passenger's side).



Strong As An Ox™



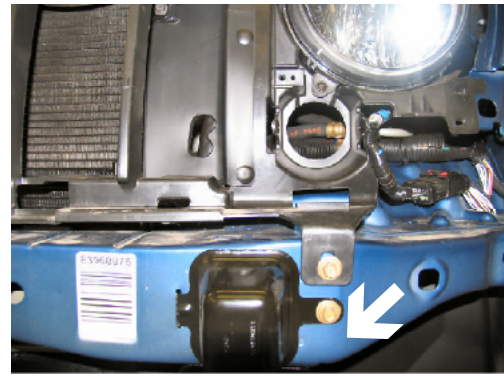
7. Using the 10MM socket, remove the two metric bolts from the bottom edge of fascia just below radiator support.



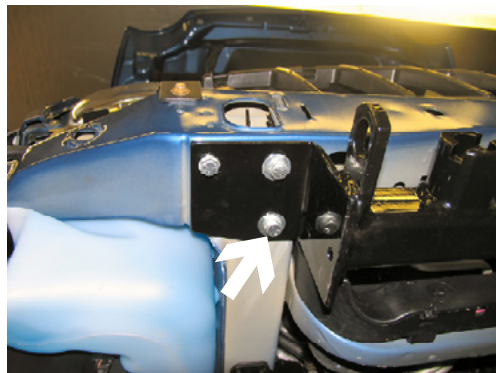
8. Release tab on the inside of wheel well and pull fascia corner to the side, both sides.



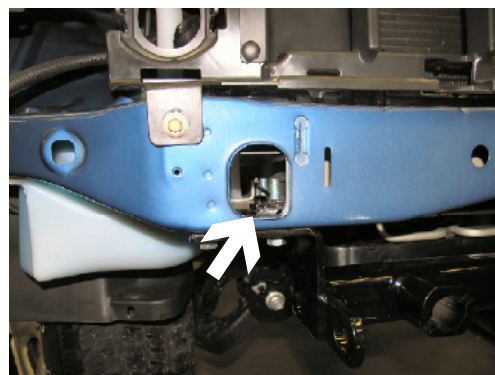
9. Push the two tabs down with the flat screw driver, pull fascia forward, unplug electrical connections, if applicable and set aside.



10. Remove the metric bolt from hub with the 10MM socket and set hub aside, both sides.



11. Align baseplate with the two existing holes in the bottom of frame, insert backing plate and nut plates into opening on the end of frame rail to align with these existing holes, both sides. Some vehicles may need to have these existing holes reamed to acquire proper fit. Tighten the 3/8" hex bolts, flat and lock washers with the 9/16" socket, both sides. **Be sure and use Loctite Red on all bolts before tightening. Tighten all bolts according to Torque Chart in the General Instruction Sheet. Note: Some models may have tow hooks that will need to be removed and will not be reinstalled.**





Strong As An Ox™



**12.** Using the baseplate as a template, drill a hole into the frame with the 13/32" drill bit, both sides. Insert nut plate into opening on the back side of frame support to align with drilled hole, tighten the 3/8" hex bolt and lock washer with the 9/16" socket, both sides. **Be sure to use Loctite Red on all bolts before tightening. Tighten all bolts according to Torque Chart in General Instruction Sheet.**



**13.** Reinstall hubs on the front of metal bumper with the existing bolts and 10MM socket.

**14.** Reinstall fascia and grill. Replace the plastic rivets provided that were remove in step 5. **Be sure that all electrical components are plugged in properly.**

**15.** The dimensional variations between otherwise identical cars can be considerable. While the location and size of the holes in the baseplate were designed to allow for easy installation, it may be necessary to file a hole slightly to allow a bolt to clear.

**16.** Install the tow bar and safety cables according to the instructions included in their packages.

**17. Do not substitute other devices if the tow bar pin and clip are lost.**

**18. DEALER OR INSTALLER: BE CERTAIN THE USER RECEIVES THE INSTRUCTION SHEET.**





Strong As An Ox™

## Tools Required

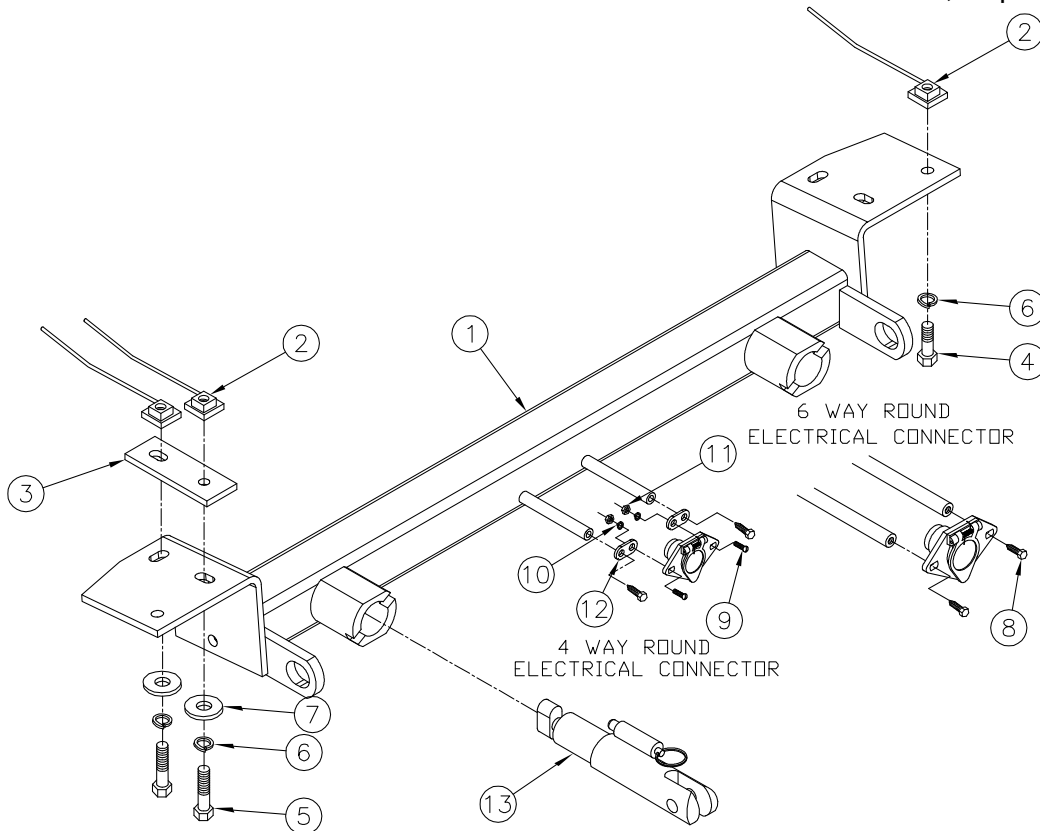
10MM Socket  
Flat Screw Driver

9/16" Socket  
Loctite Red

20 Torx Socket  
Diagonal Cutters

## Parts List

Ref. No.	Qty.	Part No.	Description
1	1	61-6075	Weldment, Base Plate, BX1122
2	6	61-5208	3/8-16 Nut Plate, with 14" Wire
3	2	102-6572	Backing Plate, BX1122
4	2	201-0440	3/8-16 x 1 1/2 Hex Bolt, Grd. 5, ZP
5	4	201-0444	3/8-16 x 2 Hex Bolt, Grd. 5, ZP
6	6	203-0010	3/8" Lock Washer, ZP
7	4	203-0003	3/8" Flat Washer, ZP
8	2	201-0979	1#12-14 x 1" Self Drilling Screw, ZP
9	2	201-0192	#10-32 x 1/2 Slot, Rd. Hd. Screw
10	2	203-0054	#10 Lock Washer
11	2	202-0047	#10-32 Hex Nut
12	2	101-5822	Adapter, 4 Way Connector
13	2	62-3468	Attachment, Assembly, SF/ SB (R)
	2	226-0046	Baseplate Safety Cable, 36" CL III (Not Shown)
	4	229-0359	Quicklink, 3/8, ZP (Not Shown)
	6	229-0536	6.3MM Plastic Rivet (Not Shown)
	2	290-0437	Receiver, Cap Plug (BLK) (Not Shown)



*Location for the BX8869 on driver's side tail light assembly.*

**IMPORTANT:** Use only genuine factory replacement parts on your Base Plate. Do not substitute homemade or nontypical parts. If a bolt is lost or in need of replacement, for your safety and the preservation of your Base Plate, be sure to use a replacement bolt of the same grade (Usually Grade 5, refer to parts list). Repair parts may be ordered through your nearest **Blue Ox** dealer or distributor.