



Strong As An Ox™

## BX1652 Installation Instructions 2001-03 Cadillac DeVille

Serial No.

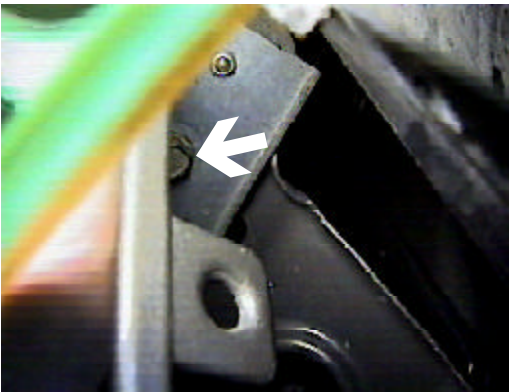
The front fascia, windshield washer reservoir and head light assemblies are removed for baseplate installation. Drilling is required. The BX8811 is available for the vehicle. Attachment Tabs are 24 inches center to center and a height of 13 inches.



1. Remove the four push pins from the top side of fascia, just under hood latch.



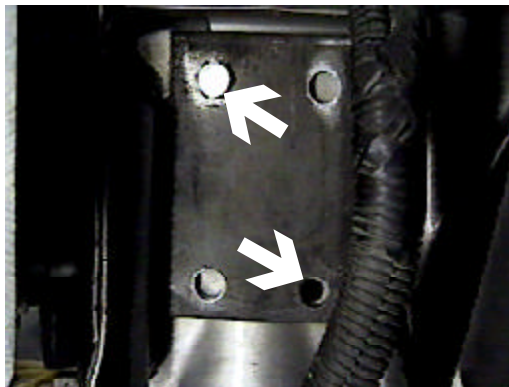
2. Just forward of front tires, on wheel well edge, are three push pins to remove, both sides.



3. Using the 10MM socket, remove one metric bolt inside wheel well on upper fascia corner, both sides.



4. Remove seven push pins from the bottom of front fascia, unplug side lights. Pull fascia forward and set aside.



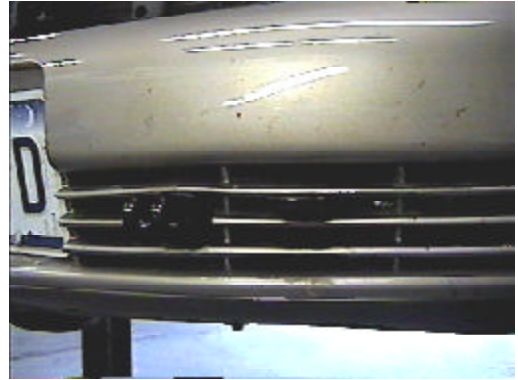
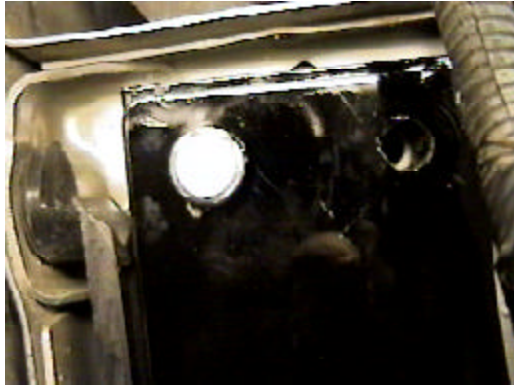
5. Hold item 2, 1/4" down from top webbing, flush with the back bumper bolt bracket (approximately 3/4" back of front webbing), drill top front and lower back holes with the 13/32" drill bit, both sides.



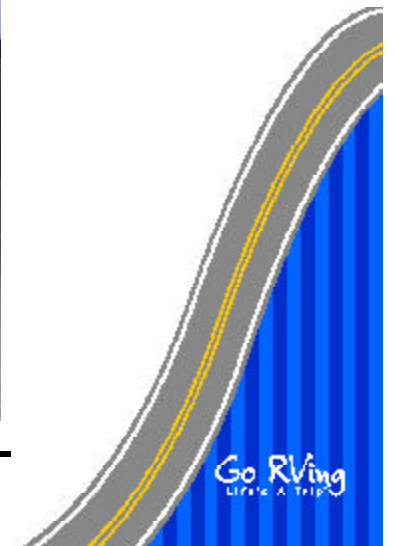
6. Hold items 1 and 2 to align with drilled holes. Insert item 3 into opening on frame, tighten items 4 and 5. **Be sure and use loctite on all bolts before tightening. Tighten according to torque chart in the General Instruction Sheet.**



Strong As An Ox™



7. Drill remaining holes with the 13/32" drill bit. Install items 3, 4 and 5, tighten all bolts, both sides. **Be sure and use loctite on all bolts before tightening. Tighten according to torque chart in the General Instruction Sheet.**
8. Hold fascia in place, mark and trim accordingly using the utility knife. Reinstall fascia and be sure all electrical connections are plugged in properly.
9. The dimensional variations between otherwise identical cars can be considerable. While the location and size of the holes in the baseplate were designed to allow for easy installation, it may be necessary to file a hole slightly to allow a bolt to clear.
10. Install the tow bar and safety cables according to the instructions included in their packages.
11. Do **not** substitute other devices if the tow bar pin and clip are lost.
12. **DEALER OR INSTALLER: BE CERTAIN THE USER RECEIVES THE INSTRUCTION SHEET.**





## Tools Required

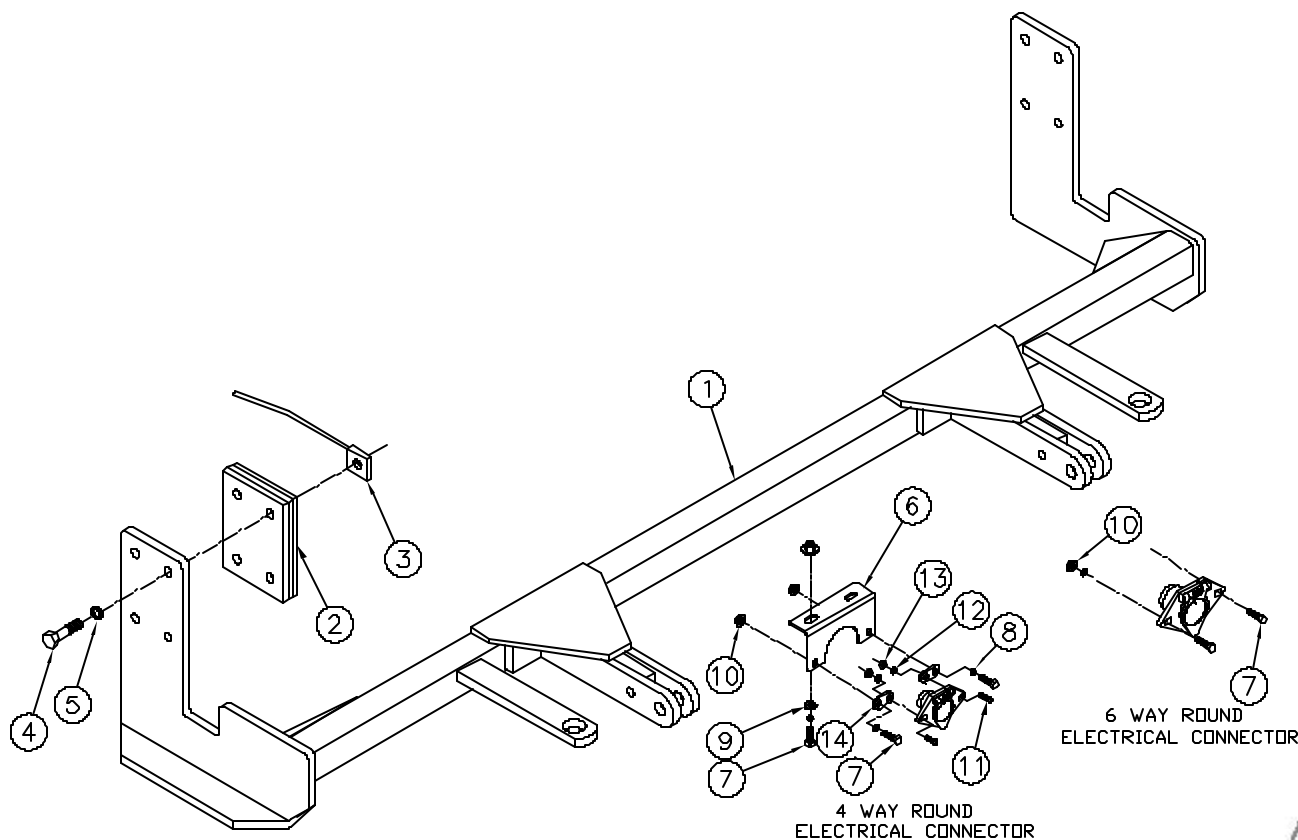
9/16" Socket  
13/32" Drill Bit

Loctite  
Tape Measure

10MM Socket

## Parts List

Ref. No.	Qty.	Part No.	Description
1	1	61-5938	Weldment, Base Plate, BX1652
2	2	61-5950	Weldment, Spacer Plate, BX1652
3	8	61-5208	3/8-16 Nut Plate
4	8	201-0332	3/8-16 x 2 1/4 Bolt Grd. 5, ZP
5	8	203-0010	3/8 Lock Washer, ZP
6	1	101-6135	Electrical Bracket
7	4	201-0569	1/4-20 x 3/4, Hex Bolt, Grd 5, ZP
8	4	203-0008	1/4 Lock Washer, ZP
9	2	203-0001	1/4 Lock Washer, ZP
10	4	202-0069	1/4-20 Hex, Flange, Whiz Lock Nut, ZP
11	2	201-0192	#10-32 x 1/2 Slot, Rd. Hd. Screw
12	2	203-0054	#10 Lock Washer
13	2	202-0047	#10-32 Hex Nut
14	2	101-5822	Adapter, 4 Way Connector



**IMPORTANT:** Use only genuine factory replacement parts on your Base Plate. Do not substitute homemade or nontypical parts. If a bolt is lost or in need of replacement, for your safety and the preservation of your Base Plate, be sure to use a replacement bolt of the same grade (Usually Grade 5, refer to parts list). Repair parts may be ordered through your nearest **Blue Ox** dealer or distributor.