

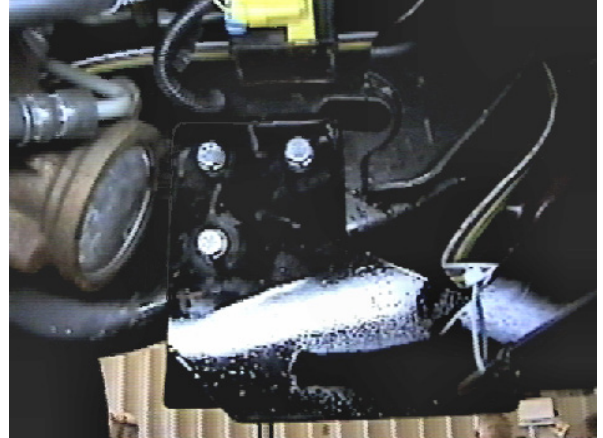
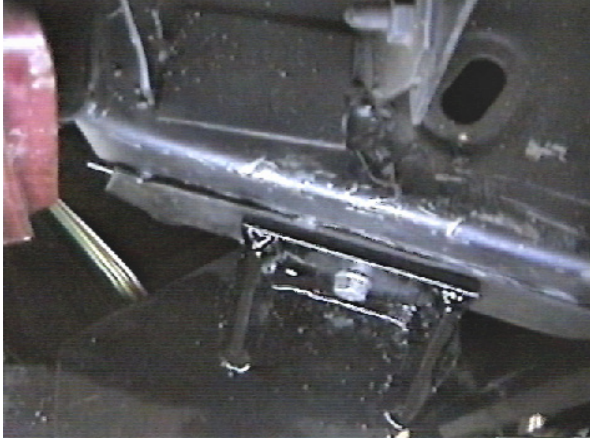


Strong As An Ox™

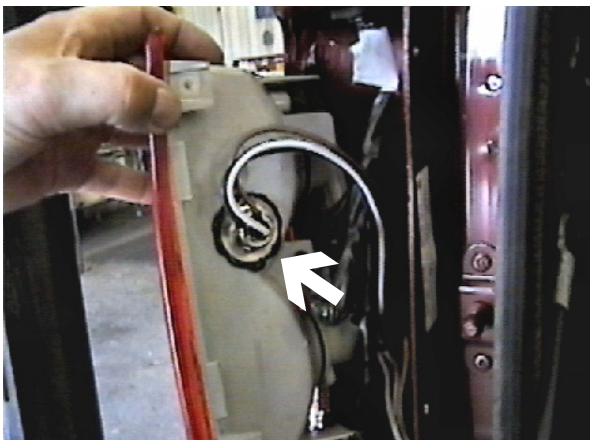
**BX1653 Installation Instructions
2003-04 Chevy S-10 Blazer (2wd)**

Serial No.

Drilling is required. No trimming is required. The BX8869 is available for the vehicle. Attachment Tabs are 21 inches center to center and a height of 13 1/4 inches.



1. Set baseplate ends to align to the bottom and the inside of frame. Slide baseplate forward until attachment tabs are touching the bottom edge of fascia and clamp in place with the large vise grips. Using the baseplate as a template, drill all holes with the 13/32" drill bit, both sides. Insert nut plates into frame end through front fascia opening to align with drilled holes in the frame, tighten the 3/8 hex bolt and lock washer. **Be sure and use loctite on all bolts before tightening. Tighten all bolts according torque chart in the General Instruction sheet.**
2. The dimensional variations between otherwise identical cars can be considerable. While the location and size of the holes in the baseplate were designed to allow for easy installation, it may be necessary to file a hole slightly to allow a bolt to clear.
3. Install the tow bar and safety cables according to the instructions included in their packages.
4. Do **not** substitute other devices if the tow bar pin and clip are lost.
5. **DEALER OR INSTALLER: BE CERTAIN THE USER RECEIVES THE INSTRUCTION SHEET.**



*Location for the
Bx8869 on driver's side
tail light assembly.*



Tools Required

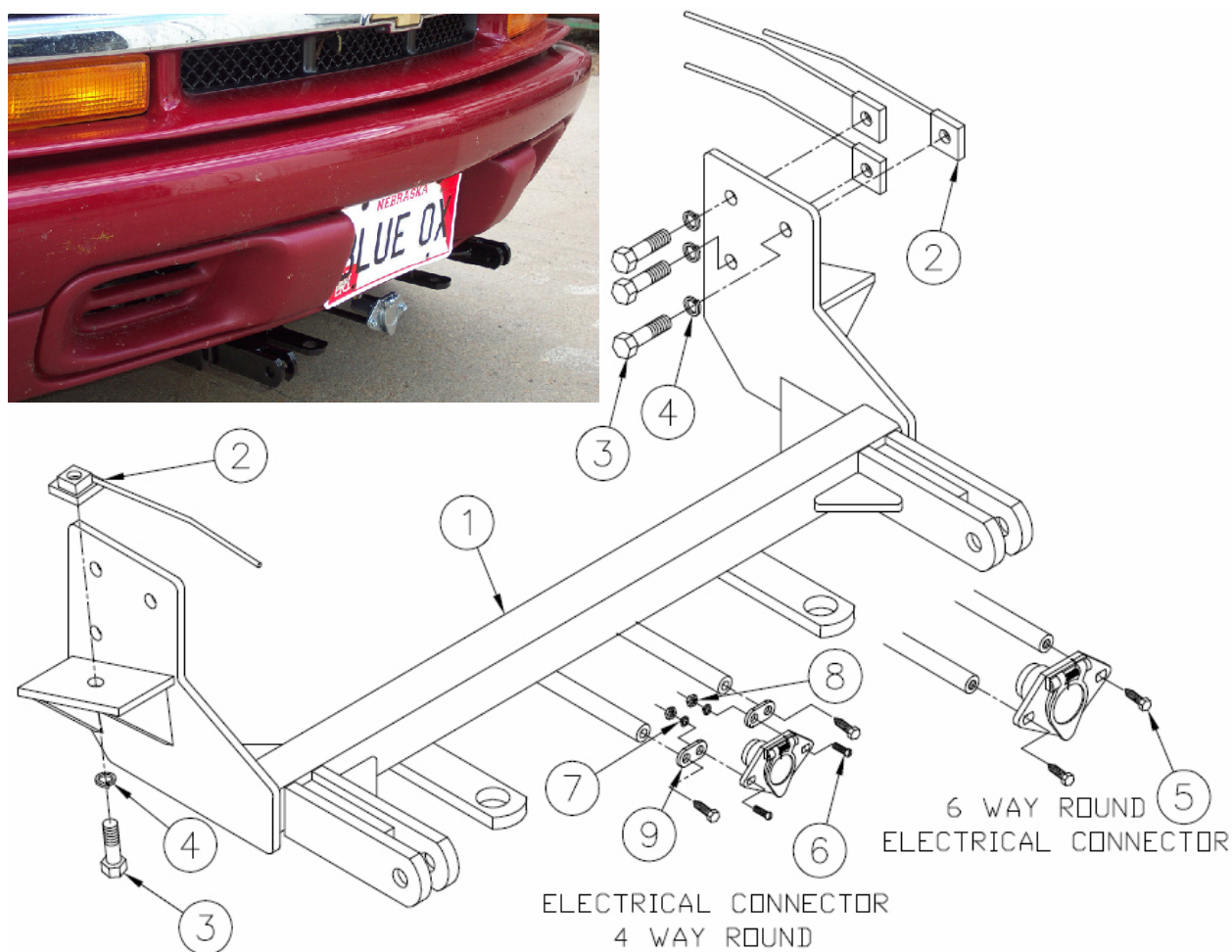
9/16" Socket
Vise Grips

Loctite

13/32" Drill Bit

Parts List

| Ref. No. | Qty. | Part No. | Description |
|----------|------|----------|-------------------------------------|
| 1 | 1 | 61-5953 | Weldment, Base Plate, BX1653 |
| 2 | 8 | 61-5208 | 3/8" Nut Plate, with Wire |
| 3 | 8 | 201-0440 | 3/8-16 x 1 1/2 Bolt, Grd. 5, ZP |
| 4 | 8 | 203-0010 | 3/8 Lock Washer, ZP |
| 5 | 2 | 201-0979 | #12-14 x 1" Self Drilling Screw, ZP |
| 6 | 2 | 202-0047 | #10-32 Hex Nut |
| 7 | 2 | 203-0054 | #10 Lock Washer |
| 8 | 2 | 201-0192 | #10-32 x 1/2 Slot, Rd. Hd. Screw |
| 9 | 2 | 101-5822 | Adapter, 4 Way Connector |



IMPORTANT: Use only genuine factory replacement parts on your Base Plate. Do not substitute homemade or nontypical parts. If a bolt is lost or in need of replacement, for your safety and the preservation of your Base Plate, be sure to use a replacement bolt of the same grade (Usually Grade 5, refer to parts list). Repair parts may be ordered through your nearest **Blue Ox** dealer or distributor.