



Strong As An Ox™

BX1654 Installation Instructions

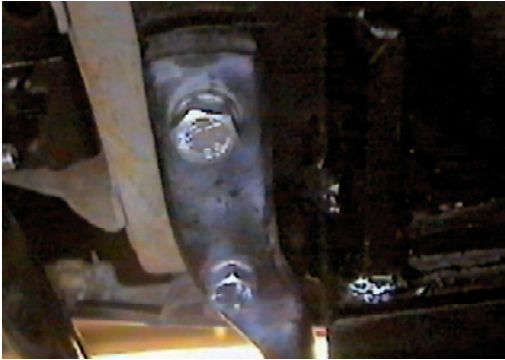
1992-1996 Chevy Blazer (Full Size)

1999-2000 GMC Denali

1999-2001 Cadillac Escalade

Serial No.

The belly pan and tow hooks are removed for baseplate installation. Drilling is required. The BX8869 is available for the vehicle. Attachment Tabs are 26 1/2 inches center to center and a height of 16 1/2 inches.



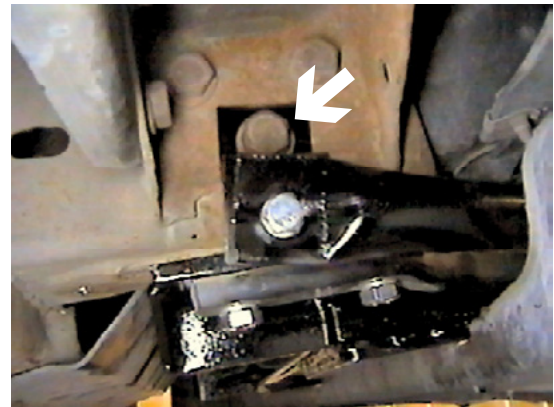
1. Remove two metric bolts from tow hooks on bottom of frame with the 17MM socket. Using the 10MM socket, remove four metric bolts from belly pan, set aside. Align baseplate with tow hook mounting holes, tighten existing bolts into baseplate. Using the center punch, mark the two side holes on baseplate, both sides. Remove baseplate and drill all four holes with 17/32" drill bit.



3. Insert 1/2" whiz nut with wire into end of frame to align with drill holes, tighten 1/2" hex bolt and lock washer through baseplate with the 3/4" socket, both sides. **Be sure to use loctite on all bolts before tightening. Tighten all bolts according to Torque Chart in General Instruction Sheet.** Reinstall belly pan.



2. Install baseplate and tow hooks to the bottom of frame using 12MM x 50MM hex bolts. Be sure baseplate is aligned with side drilled holes. **Be sure to use loctite on all bolts before tightening. Tighten all bolts according to Torque Chart in General Instruction Sheet.**



4. **For Chevy Blazer models:** Using the 21MM socket, remove lower metric bolt from frame just above tow hook and install closure bracket, both sides. Do not tighten. Slide tow hook closure over the end of tow hook with a hammer and align with closure bracket. Insert 3/8 hex bolt into bracket and closure, tighten lock washer and hex nut as shown in drawing on page 3. **Be sure to use loctite on all bolts before tightening. Tighten all bolts according to Torque Chart in General Instruction Sheet.**



Strong As An Ox™



Location for the Bx8869 on driver's side tail light assembly.



5. The dimensional variations between otherwise identical cars can be considerable. While the location and size of the holes in the baseplate were designed to allow for easy installation, it may be necessary to file a hole slightly to allow a bolt to clear.
6. Install the tow bar and safety cables according to the instructions included in their packages.
7. Do **not** substitute other devices if the tow bar pin and clip are lost.
8. **DEALER OR INSTALLER: BE CERTAIN THE USER RECEIVES THE INSTRUCTION SHEET.**

Tools Required

10MM Socket
9/16" Socket
17/32" Drill Bit

17MM Socket
3/4" Socket
17/32" Center Punch

18MM Socket
Vise Grips
21MM Socket
Loctite

Bolt Torque Specifications

Torque in Foot-Pounds for Inch Bolts

Bolt Size	Grade 5	Grade 8
1/4"	10	14
5/16"	19	29
3/8"	33	47
7/16"	54	78
1/2"	78	119
5/8"	154	230
3/4"	257	380

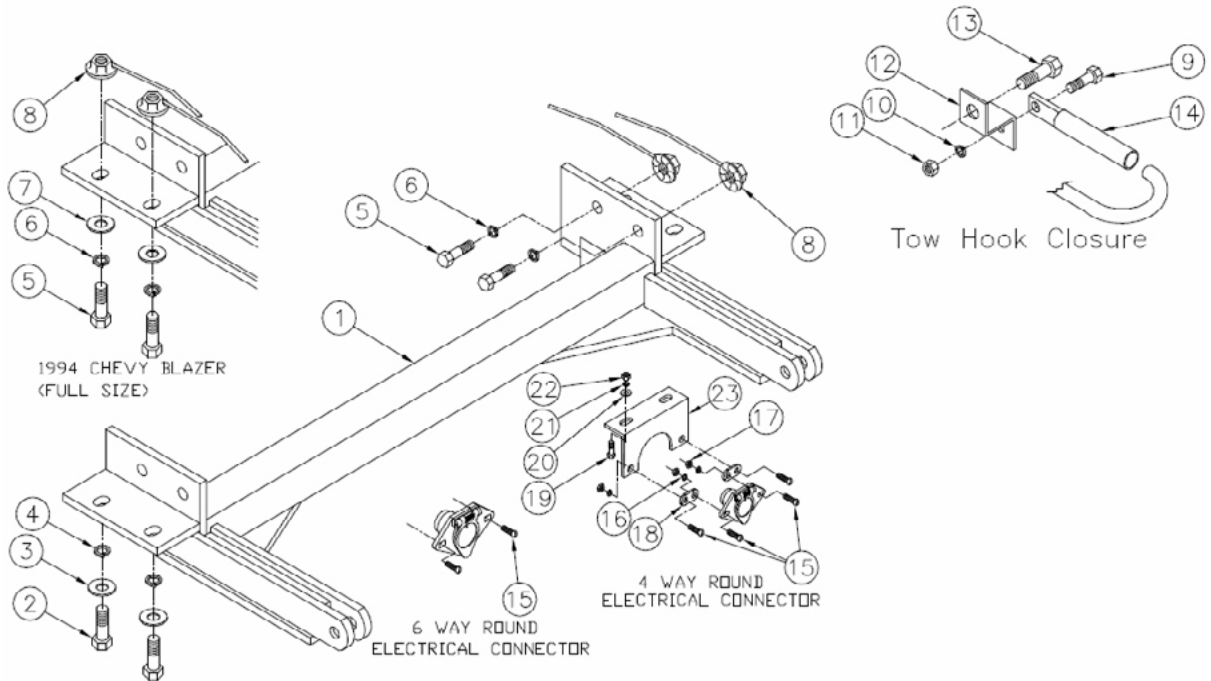
Bolt Torque Specifications

Torque in Foot-Pounds for Metric Bolts

Bolt Size	Grade 8.8	Grade 10.9
6MM	6	8
8MM	16	22
10MM	31	40
12MM	54	70
14MM	89	117
16MM	161	230
18MM	222	318



Strong As An Ox™



Parts List

Ref. No.	Qty.	Part No.	Description
1	1	61-5970	Weldment, Base Plate, BX1654
2	4	201-0415	12MM-1.75 x 50MM Hex Bolt, Grade 8.8, ZP
3	4	203-0105	12MM Lock Washer, ZP
4	4	203-0112	12MM Flat Washer, ZP
5	8	201-0051	1/2-13 x 1 1/2 Bolt, Grd. 5, ZP
6	8	203-0012	1/2 Lock Washer, ZP
7	4	203-0005	1/2 Flat Washer, ZP
8	8	61-4029	1/2" Whiz, with Wire
9	2	201-0443	3/8-16 x 1 Bolt, Grd. 5, ZP
10	2	203-0010	3/8 Lock Washer, ZP
11	2	202-0071	3/8-16 Whiz Nut
12	2	102-6483	Closure Bracket, BX1631
13	2		Existing metric bolt
14	2	107-2630	Tow Hook, Closure, BX1654
15	4	201-0192	#10-32 x 1/2 Slot, Rd. Hd. Screw
16	4	203-0054	#10 Lock Washer
17	4	202-0047	#10-32 Hex Nut
18	2	101-5822	Adapter, 4 Way Connector
19	2	201-0071	1/4-20 x 1 Hex Bolt, Grd 5, ZP
20	2	203-0001	1/4 Flat Washer, ZP
21	2	203-0008	1/4 Lock Washer, ZP
22	2	202-0001	1/4-20 Hex Nut, ZP
23	1	101-6135	Bracket, Electrical, 90 degree
	2	226-0046	Baseplate Safety Cable, 36" CL III (Not Shown)
	4	229-0359	Quicklink, 3/8, ZP (Not Shown)

IMPORTANT: Use only genuine factory replacement parts on your Base Plate. Do not substitute homemade or nontypical parts. If a bolt is lost or in need of replacement, for your safety and the preservation of your Base Plate, be sure to use a replacement bolt of the same grade (Usually Grade 5, refer to parts list). Repair parts may be ordered through your nearest **Blue Ox** dealer or distributor.