



# BX1674

## 2007-13 Chevy/GMC 1500 Hybrid & New Style Installation Instructions

Serial Number

**Attachment Tab Height: 15-1/4"**

**Attachment Tab Width: 31-1/2"**

**Please read BOTH these Installation Instructions and the General Instructions prior to installing or operating this equipment.**

- Blue Ox® towing products and accessories are intended to be installed by Blue Ox® Dealers who are familiar with our products and have the equipment and knowledge necessary to do "fit work". If needed, Blue Ox® Dealers can be found at [www.blueox.com](http://www.blueox.com) or by contacting our Customer Care Department at (402) 385-3051.
- Many Blue Ox® baseplates are designed to use existing holes and hardware to mount the baseplate to the towed vehicle. Even though bolts are there, do not assume they are adequate for baseplate mounting. Always use the hardware supplied in the hardware kit and existing hardware as specified in the installation instructions.

**Bolt Torque Specifications**  
Torque in Foot-Pounds for Inch Bolts

Bolt Size	Grade 5	Grade 8
1/4"	10	14
5/16"	19	29
3/8"	33	47
7/16"	54	78
1/2"	78	119
5/8"	154	230
3/4"	257	380



If the front of your vehicle looks different than this, please contact us at (402)385-3051.

**Reference your vehicle owner's manual for manufacturer's towing specifications.**

**Bolt Torque Specifications**  
Torque in Foot-Pounds for Metric Bolts

Bolt Size	Grade 8.8	Grade 10.9
6MM	6	8
8MM	16	22
10MM	31	40
12MM	54	70
14MM	89	117
16MM	161	230
18MM	222	318

## WARNING

Failure to read and follow these instructions could result in separation of the towed vehicle from the tow bar, causing property damage, loss of towed vehicle, personal injury or death.

BX1674  
2007-13 Chevy/GMC 1500 Hybrid & New Style  
Installation Instructions

**Instruction Notes:** Some drilling and trimming of the tow hook shield is required.

Place all components that are removed on a flat, sturdy surface. All items will be reinstalled unless otherwise noted after the baseplate is installed.

The dimensional variations between otherwise identical vehicles can be considerable. While the baseplate was designed for easy installation, it may be necessary to tailor the baseplate slightly to compensate for vehicle manufacturer's tolerances.

The BX8848 Diode Wiring Kit is recommended for 2007-08 models.

The BX8869 Tail Light Wiring Kit is recommended for 2009 thru 2013 models.

## ***NOTICE***

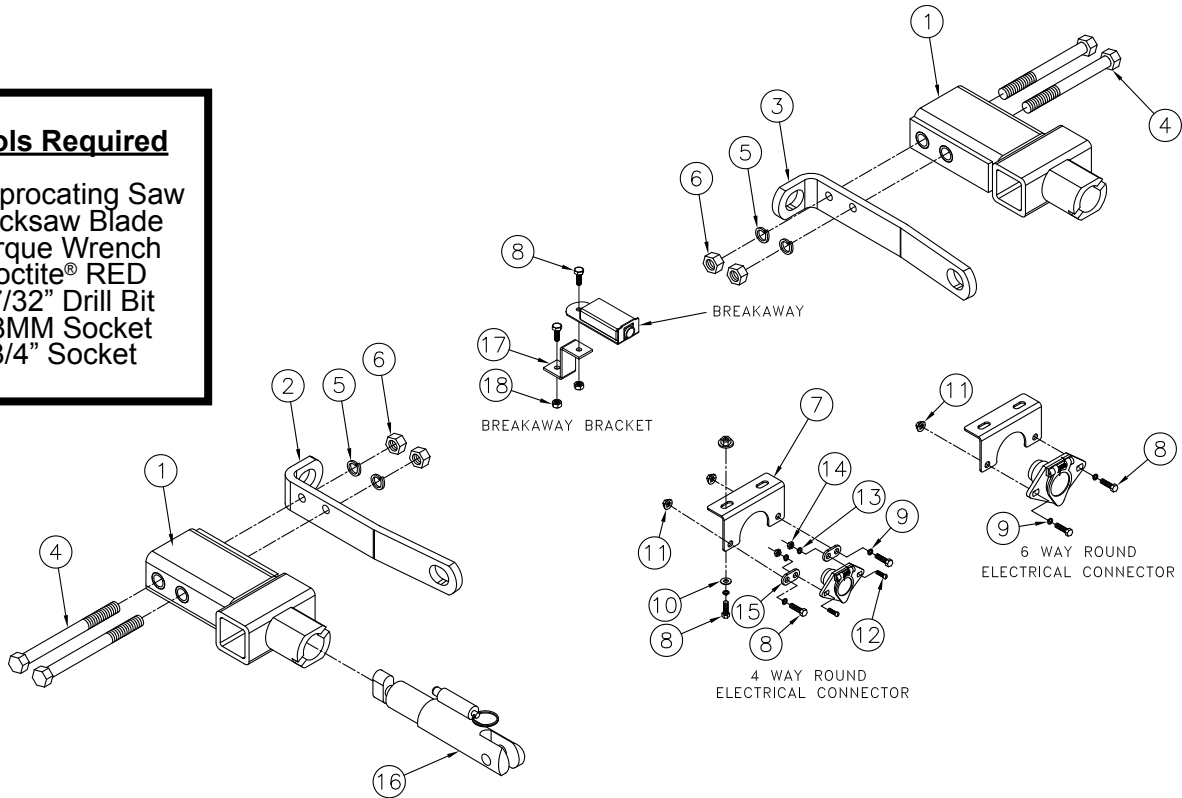
- Handling of some cosmetic parts when installing this product may require the use of protective covers, rags, specialty tools, etc. to prevent damage.
- When using power drills be aware of the dangers of torque and drill bit length.
- When using a reciprocating saw be aware of objects behind the cutting surface.
- Use a good quality paint to spray cut edges of frame to prevent rusting.
- Be sure that **ALL** electrical connections are plugged in and accessories are functioning properly before reinstalling the fascia.
- The baseplate is computer tested to your vehicle's GVWR, exceeding this weight will void the manufacturer's warranty.
- Be sure to use Loctite® Red on all bolts before tightening. Tighten all bolts according to the torque chart provided.
- Dealer or installer be certain the user receives these instruction sheet.
- If the baseplate is in an accident, it must be replaced. **DO NOT** use it again! An accident can cause unseen damage and using it again could result in more damage or serious injury. **DO NOT** use the baseplate if it is damaged or missing parts.

# BX1674

## 2007-13 Chevy/GMC 1500 Hybrid & New Style Installation Instructions

### Tools Required

Reciprocating Saw  
Hacksaw Blade  
Torque Wrench  
Loctite® RED  
17/32" Drill Bit  
18MM Socket  
3/4" Socket

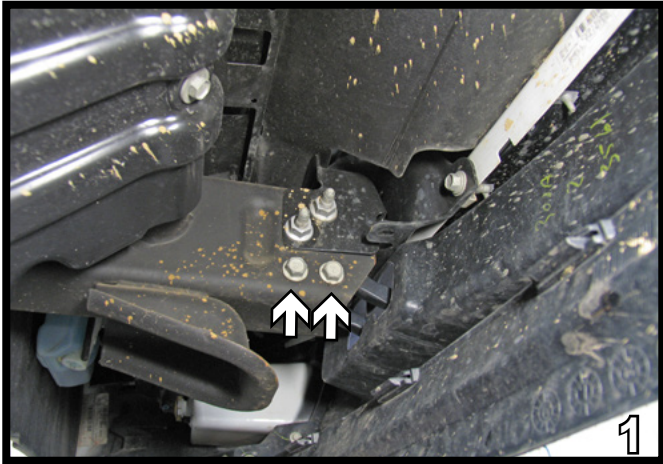


Item No.	Part No.	Description	Qty.
1.....	61-6380.....	BX1674 Baseplate.....	1
2.....	102-6797.....	BX1674 Convenience Link, 12", PS.....	1
3.....	102-6798.....	BX1674 Convenience Link, 12", DS.....	1
4.....	201-0786.....	1/2"-13 x 5" Hex Head Bolt, Grade 5, ZP.....	4
5.....	203-0012.....	1/2" Lock Washer, ZP.....	4
6.....	202-0094.....	1/2"-13 Hex Nylon Insert Lock Nut, ZP.....	4
7.....	101-6135.....	90 Degree Electrical Bracket.....	1
8.....	201-0050.....	1/4"-20 x 3/4" Hex Head Bolt, Grade 5, ZP.....	6
9.....	203-0008.....	1/4" Lock Washer, ZP.....	4
10.....	203-0001.....	1/4" Flat Washer, ZP.....	2
11.....	202-0069.....	1/4"-20 Hex Flange Whiz Lock Nut, ZP.....	4
12.....	201-0192.....	#10-32 x 1/2" Round Slot Head Screw.....	2
13.....	203-0054.....	#10 Lock Washer.....	2
14.....	202-0047.....	#10-32 Hex Nut.....	2
15.....	101-5822.....	4 Way Connector Adapter.....	2
16.....	62-3468.....	SF/SB Assembly Attachment.....	2
17.....	102-7056.....	Coolant Bracket Breakaway.....	1
18.....	202-0102.....	1/4"-20 Hex Nylon Nut, ZP.....	2
19.....	203-0005(not shown).....	1/2" Flat Washer.....	8
20.....	226-0049(not shown).....	Class IV Safety Cables.....	2
21.....	229-0512(not shown).....	1/2" Quicklink, ZP.....	2
22.....	290-0437(not shown).....	Black Cap Plug.....	2

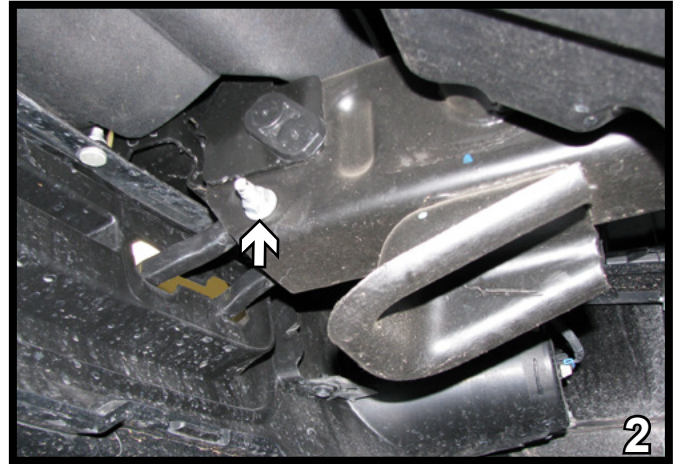
### Important:

Use only genuine factory replacement parts on your baseplate. Do **NOT** substitute homemade or non-typical parts. If a bolt is lost or in need of replacement, for your safety and the preservation of your baseplate, be sure to use a replacement bolt of the same grade (in most cases it will be Grade 5, please reference the parts list above). Replacement parts may be ordered through your nearest Blue Ox® Dealer or Distributor. Failing to follow and/or altering these installation instructions in either installation or required equipment will void the manufacturer's warranty.

BX1674  
2007-13 Chevy/GMC 1500 Hybrid & New Style  
Installation Instructions

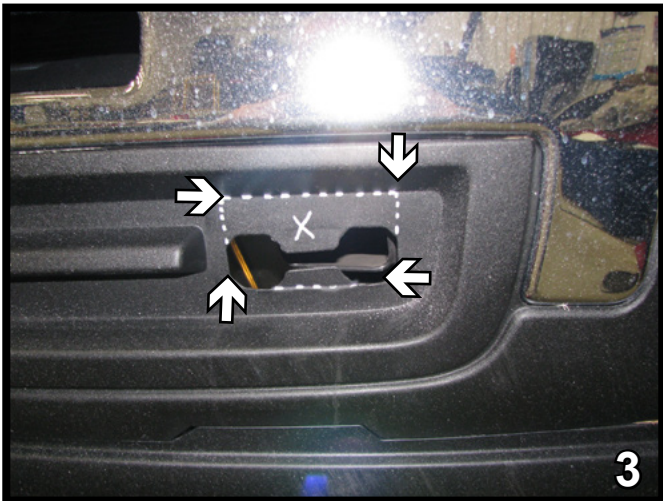


1. Using a 18MM socket, remove two (2) bolts from the inside edge of the frame rail. Do this to both sides of the vehicle. This hardware will not be reinstalled.

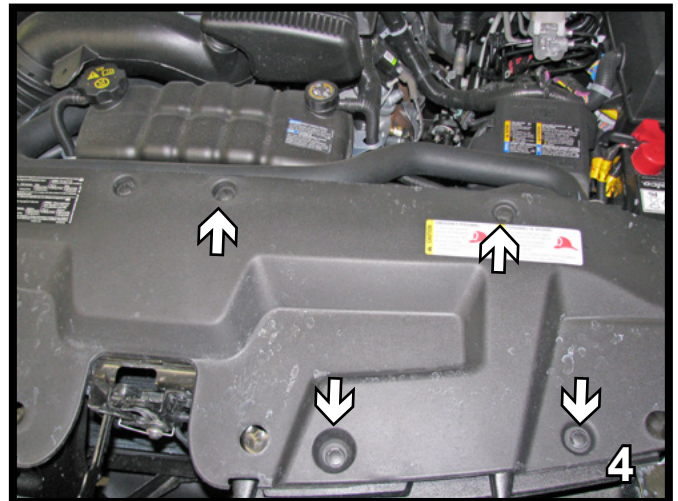


2. Using a 18MM socket, remove one nut from the outside edge of the frame rail. Pull the tow hook forward and remove it. Do this to both sides of the vehicle. The factory tow hooks will not be reinstalled.

**Note: Please insure that the tow hooks and hardware are returned to customer after baseplate installation.**

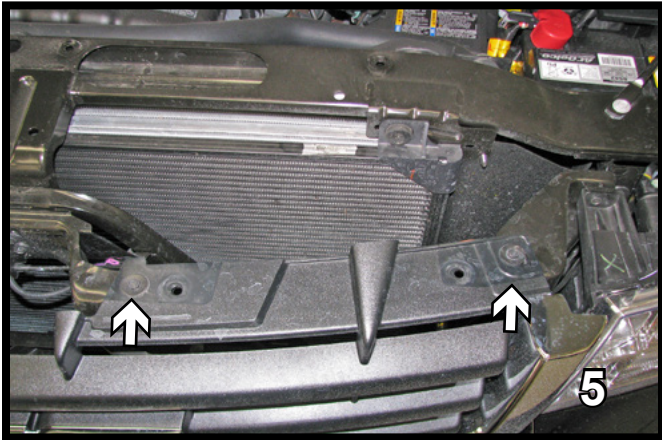


3. Using a utility knife, trim the top part of the tow hook shield. Do this to both sides of the vehicle.

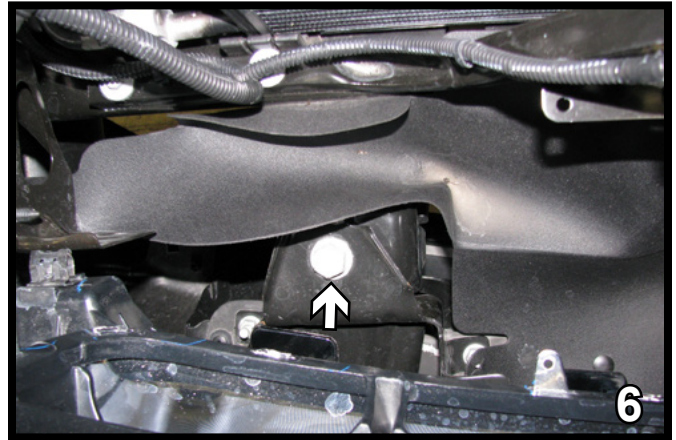


4. Remove four (4) pushpins from the flat plastic piece on top of fascia. Do this to both sides of the vehicle.

BX1674  
2007-13 Chevy/GMC 1500 Hybrid & New Style  
Installation Instructions

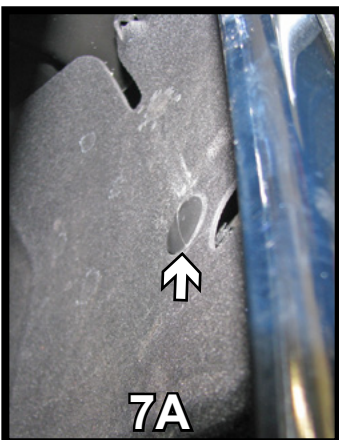


5. Using a 10MM socket remove two bolts from the top front edge of the grille. Do this to both sides of the vehicle.

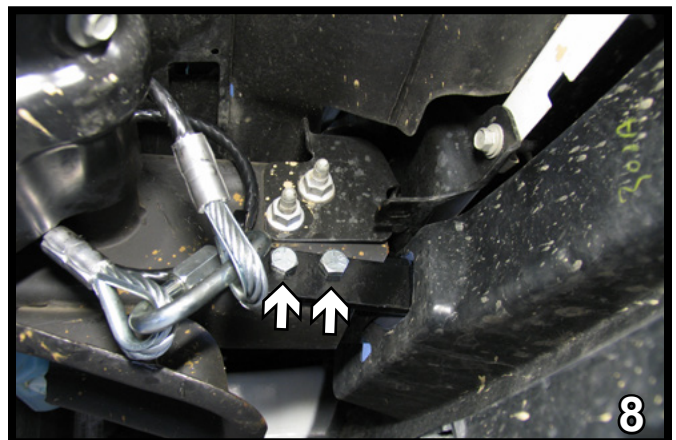


6. Remove the bolt on top of frame end, just below plastic removed in Step 4 with a 21MM socket. Reinstall the bolt with four (4) 1/2" flat washers. Do this to both sides, one side at a time.

Note: On some 2012 models the nut on underside may need to be cut off for baseplate clearance.



7. Remove two push pins from the opening in the grille (7A). They will be replaced with bolts and brackets (7B). Install the breakaway bracket on the passenger side with 1/4"-20 x 3/4" bolt and 1/4"-20 nut. Attach the breakaway to the bracket also with 1/4"-20 x 3/4" bolt and 1/4"-20 nut.

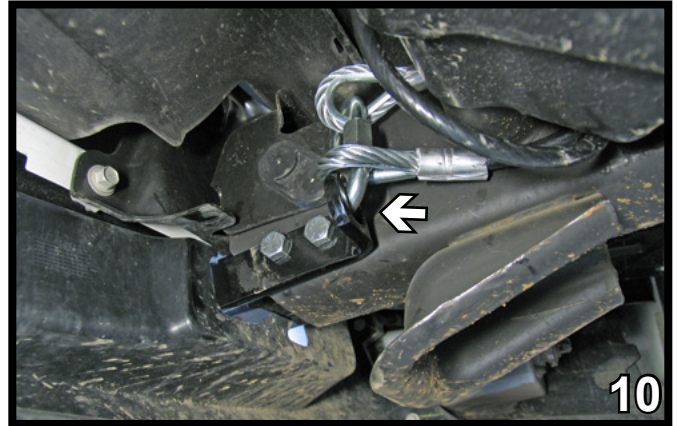


8. Slide the baseplate into frame end to align with the front tow hook hole on the outside of the frame rail. Insert straight portion of the convenience link thru the tow hook opening and align it with the existing holes of the frame. Insert a 1/2"-13 x 5" bolt, 1/2" lock washer and 1/2" lock nut into the front hole and tighten down. Do this to both sides of the vehicle.

BX1674  
2007-13 Chevy/GMC 1500 Hybrid & New Style  
Installation Instructions



9. Using the existing back hole and the baseplate as a template, drill through to the other side of the frame wall with a 17/32" drill bit. Insert a 1/2"-13 x 5" hex bolt, 1/2" lock washer and 1/2"-13 hex nylon lock nut into the back hole and tighten down. Tighten down both fasteners until the frame squeezes against the baseplate. Do this on both sides of the vehicle.



10. Attach the permanent baseplate safety cables to the provided convenience link on the baseplate. The photo above shows the recommended installation of the cables to frame of vehicle. Additional options may interfere with suggested mounting; in this case, secure the cables to a solid piece of the frame as described in the instructions included with the permanent baseplate safety cables. Be sure the safety cables do not rub against any hoses or moving parts. Do this on **BOTH** sides of the vehicle.

## CUSTOMER SERVICE COMMITMENT

Blue Ox® is committed to providing you with exceptional customer care throughout your lifetime with our products. Our team is here to assist you with any questions you may have regarding the performance of your product. Simply call (402) 385-3051 and you can speak with our customer care team.

Additionally, please visit our website to see which rallies our Destination America team will be attending. For a nominal fee, our service technician will service your towing system to ensure it's in proper working condition. Also, as a commitment to our customers, should you visit our factory, you can stay at our full service Blue Ox® campground at no charge along with enjoying a factory tour.

Again, thank you for being our customer and for the confidence you have shown in the performance of our products. It is because of customers like you we enjoy the success we have today.

© 2013 Blue Ox  
One Mill Road, Industrial Park  
Pender, Nebraska 68047  
Phone: (402) 385-3051  
Fax: (402) 385-3360  
www.blueox.com