



# BX1690

## 2010-15 Cadillac SRX (All Models) Installation Instructions

**Attachment Tab Height: 16-1/2"**

**Attachment Tab Width: 18"**

**Serial Number**

**Please read BOTH these Installation Instructions and the General Instructions prior to installing or operating this equipment.**

- Blue Ox® towing products and accessories are intended to be installed by Blue Ox® Dealers who are familiar with our products and have the equipment and knowledge necessary to do "fit work". If needed, Blue Ox® Dealers can be found at [www.blueox.com](http://www.blueox.com) or by contacting our Customer Care Department at (402) 385-3051.
- Many Blue Ox® baseplates are designed to use existing holes and hardware to mount the baseplate to the towed vehicle. Even though bolts are there, do not assume they are adequate for baseplate mounting. Always use the hardware supplied in the hardware kit and existing hardware as specified in the installation instructions.

**Bolt Torque Specifications**  
Torque in Foot-Pounds for Inch Bolts

Bolt Size	Grade 5	Grade 8
1/4"	10	14
5/16"	19	29
3/8"	33	47
7/16"	54	78
1/2"	78	119
5/8"	154	230
3/4"	257	380



**Bolt Torque Specifications**  
Torque in Foot-Pounds for Metric Bolts

Bolt Size	Grade 8.8	Grade 10.9
6MM	6	8
8MM	16	22
10MM	31	40
12MM	54	70
14MM	89	117
16MM	161	230
18MM	222	318

If the front of your vehicle looks different than this, please contact us at (402)385-3051.

**Reference your vehicle owner's manual for manufacturer's towing specifications.**

**! WARNING**

Failure to read and follow these instructions could result in separation of the towed vehicle from the tow bar, causing property damage, loss of towed vehicle, personal injury or death.

BX1690  
2010-15 Cadillac SRX (All Models)  
Installation Instructions

**Instruction Notes:** The fascia, coolant lines and temperature sensor are removed and reinstalled for the baseplate installation. Some drilling and trimming is required.

Place all components that are removed on a flat, sturdy surface. All items will be reinstalled unless otherwise noted after the baseplate is installed.

The dimensional variations between otherwise identical vehicles can be considerable. While the baseplate was designed for easy installation, it may be necessary to tailor the baseplate slightly to compensate for vehicle manufacturer's tolerances.

The BX8848 4-Diode Tail Light Wiring Kit is recommended for this vehicle.

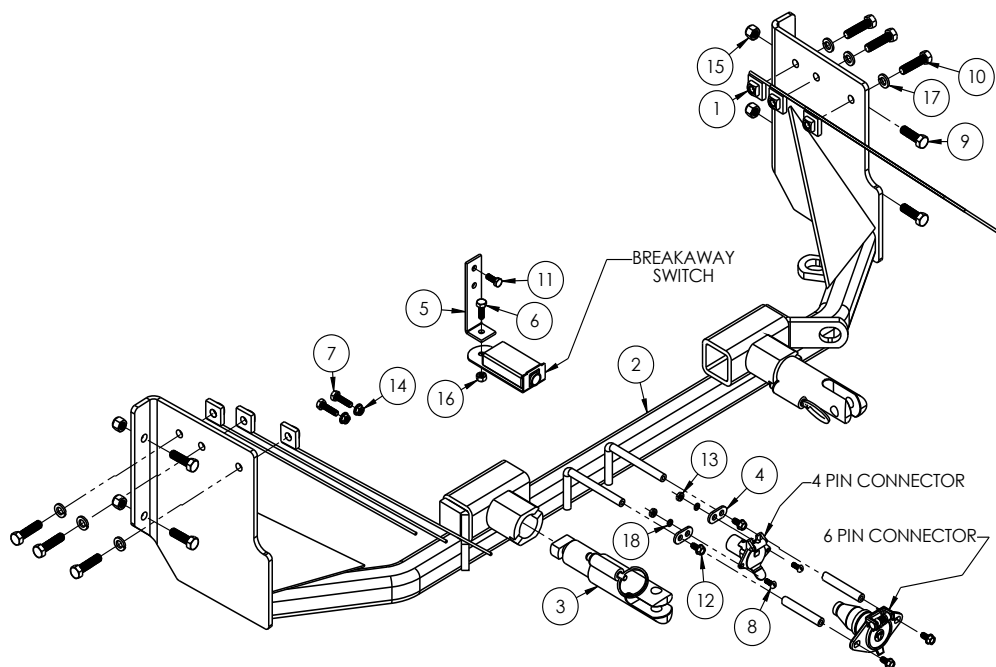
## ***NOTICE***

- Handling of some cosmetic parts when installing this product may require the use of protective covers, rags, specialty tools, etc. to prevent damage.
- When using power drills be aware of the dangers of torque and drill bit length.
- When using a reciprocating saw be aware of objects behind the cutting surface.
- Use a good quality paint to spray cut edges of frame to prevent rusting.
- Be sure that **ALL** electrical connections are plugged in and accessories are functioning properly before reinstalling the fascia.
- The baseplate is computer tested to your vehicle's GVWR, exceeding this weight will void the manufacturer's warranty.
- Be sure to use Loctite® Red on all bolts before tightening. Tighten all bolts according to the torque chart provided.
- Dealer or installer be certain the user receives these instruction sheet.
- If the baseplate is in an accident, it must be replaced. **DO NOT** use it again! An accident can cause unseen damage and using it again could result in more damage or serious injury. **DO NOT** use the baseplate if it is damaged or missing parts.

# BX1690

## 2010-15 Cadillac SRX (All Models)

### Installation Instructions



- Tools Required**

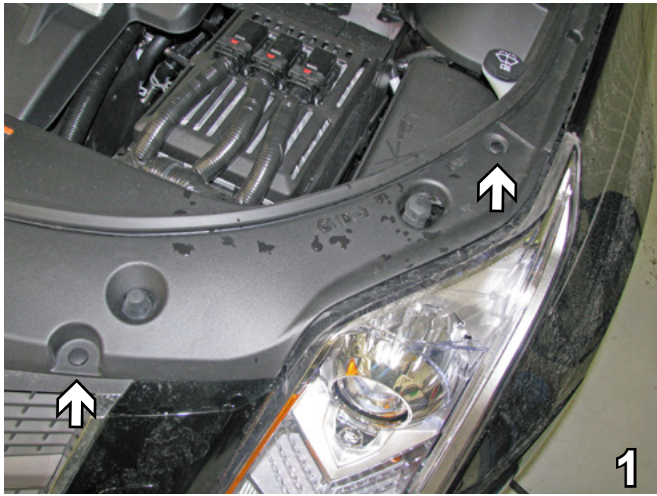
  - Large Vise Grip
  - Flat Screwdriver
  - Phillips Screwdriver
  - Utility Knife
  - Torque Wrench
  - Drill
  - Tape Measure
  - Loctite® RED
  - 1/4" Drill Bit
  - 13/32" Drill Bit
  - 1-1/4" Hole Saw
  - 7MM Socket
  - 10MM Socket
  - 9/16" Socket
  - 9/16" Wrench
  - 15 Torx

Item No.	Part No.	Description	Qty.
1.....	61-5208.....	3/8"-16 Nut Plate w/ 14" Wire.....	6
2.....	61-7068.....	BX1690 Baseplate.....	1
3.....	62-3468.....	Attachment Tab.....	2
4.....	101-5822.....	4 Way Connector Adapter.....	2
5.....	102-7186.....	Breakaway Bracket.....	1
6.....	201-0050.....	1/4"-20 x 3/4" Hex Head Bolt, Grade 5, ZP.....	1
7.....	201-0071.....	1/4"-20 x 1" Hex Head Bolt, Grade 5, ZP.....	2
8.....	201-0192.....	#10-32 x 1/2" Slotted Round Head Screw.....	2
9.....	201-0368.....	3/8"-16 x 1-1/4" Hex Head Bolt, Grade 5.....	4
10.....	201-0440.....	3/8"-16 x 1-1/2" Hex Head Bolt, Grade 5, ZP.....	6
11.....	201-0461.....	6MM-1.0 x 16MM Hex Cap Bolt, Grade 8.8, ZP.....	1
12.....	201-0979.....	#12-14 x 1" Self Drilling Screw, ZP.....	2
13.....	202-0047.....	#10-32 Hex Nut.....	2
14.....	202-0069.....	1/4"-20 Hex Flange Whiz Lock Nut, ZP.....	2
15.....	202-0090.....	3/8"-16 Hex Nylon Insert Lock Nut, ZP.....	4
16.....	202-0102.....	1/4"-20 Hex Nylon Nut, ZP.....	1
17.....	203-0010.....	3/8" Lock Washer, ZP.....	6
18.....	203-0054.....	#10 Lock Washer.....	2
19.....	226-0049(not shown).....	Class IV Safety Cables.....	2
20.....	229-0512(not shown).....	1/2" Quicklink, ZP.....	2
21.....	290-0437(not shown).....	Black Cap Plug Receiver.....	2
22.....	293-1339(not provided).....	Breakaway Switch.....	1
23.....	294-0805(not provided).....	4 Pin Connector.....	1
24.....	294-0902(not provided).....	6 Pin Connector.....	1

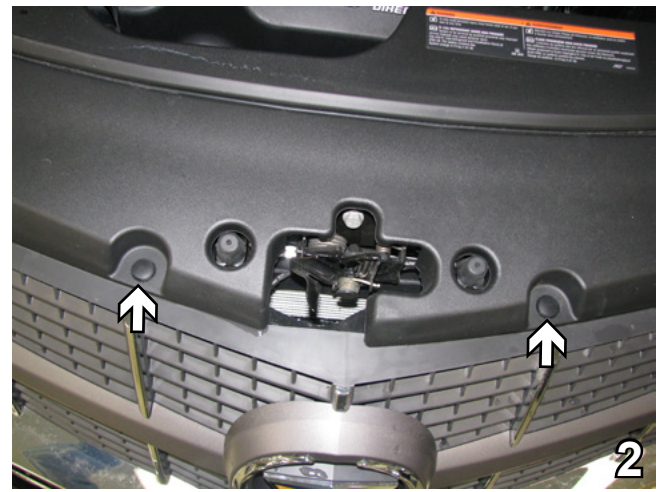
**Important:**

Use only genuine factory replacement parts on your baseplate. Do **NOT** substitute homemade or non-typical parts. If a bolt is lost or in need of replacement, for your safety and the preservation of your baseplate, be sure to use a replacement bolt of the same grade (In most cases it will be Grade 5, please reference the parts list above). Replacement parts may be ordered through your nearest Blue Ox® Dealer or Distributor. Failing to follow and/or altering these installation instructions in either installation or required equipment will void the manufacturer's warranty. Towing behind a non-motorized vehicle will void the warranty.

BX1690  
2010-15 Cadillac SRX (All Models)  
Installation Instructions



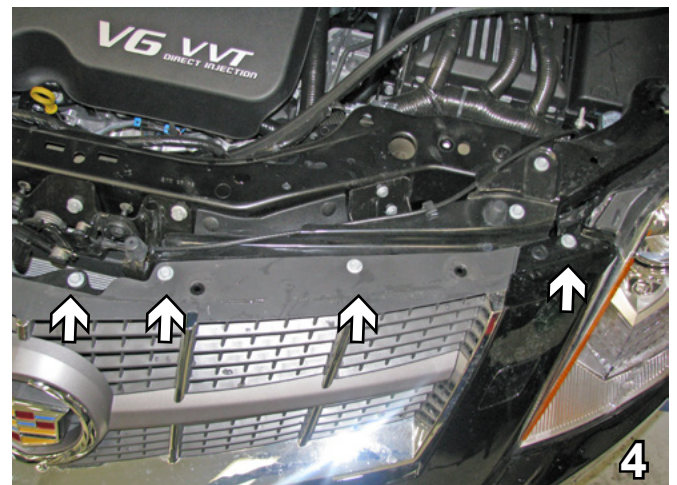
1. Remove the two (2) push pins on each side from the top edge of the fascia. Do this to both sides of the vehicle.



2. Remove the push pins from the center of the front.

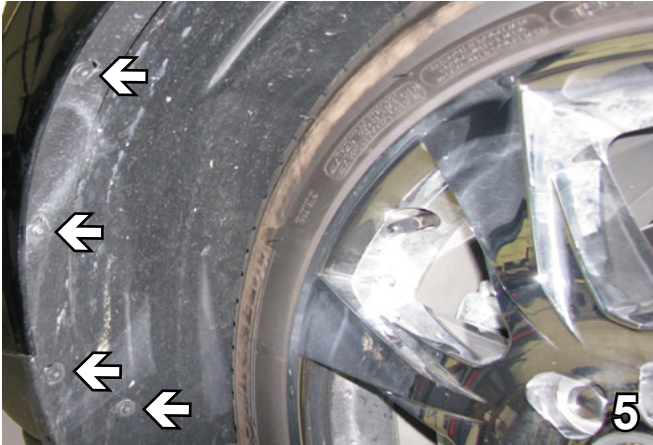


3. Remove the rubber piece across the top by pulling it to unhook it. Push hard on both sides to release the christmas tree clip.

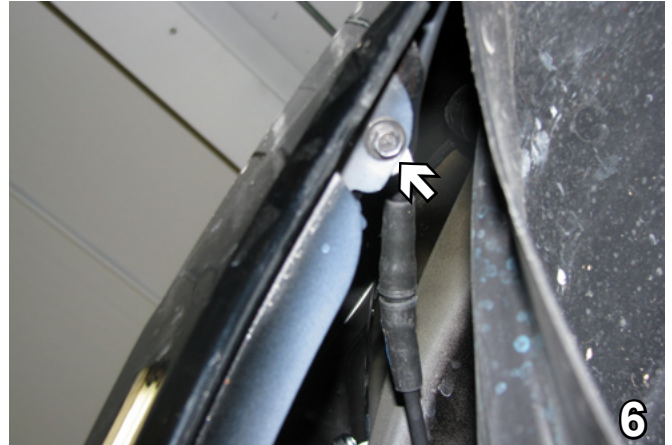


4. Using a 10MM socket, remove seven (7) bolts across the top, three (3) per side and one (1) in the middle.

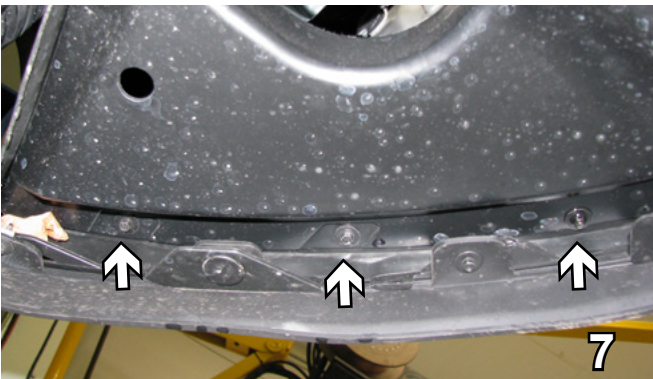
BX1690  
2010-15 Cadillac SRX (All Models)  
Installation Instructions



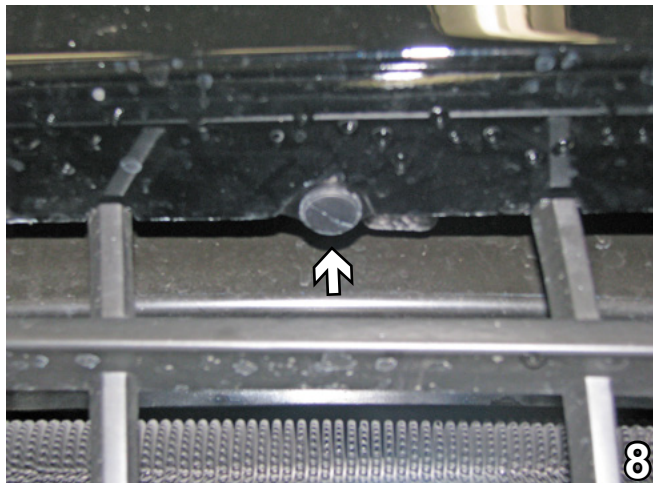
5. Using a Phillips screwdriver, remove four (4) screws just forward of the front tire on the edge of the wheel well. Do this to both sides of the vehicle.  
Note: On 2015 models use a 15 Torx in place of the Philips screwdriver.



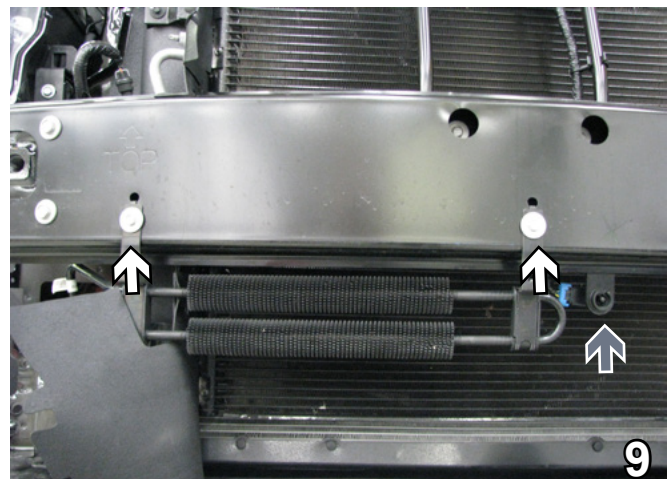
6. Pull the wheel well cover back, using a 7MM socket remove one (1) bolt from the inside corner of the fascia. Do this to both sides of the vehicle.



7. Using a 7MM socket, remove twelve (12) bolts across the bottom of the belly pan.

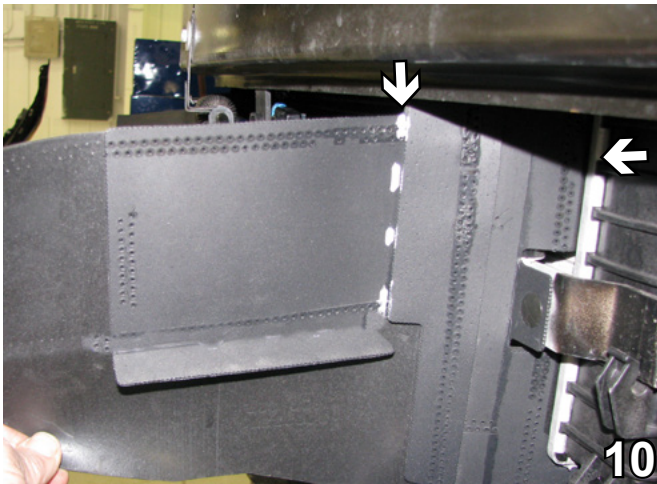


8. Remove two (2) push pins in the front, one (1) per side. Pull fascia forward and set aside carefully.

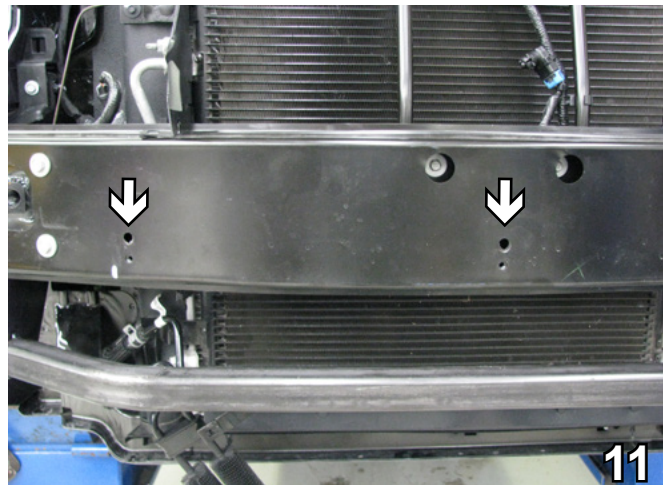


9. Using a 10MM socket, remove the two (2) bolts and the coolant line. Remove the push pin from the backside of the temperature sensor (gray arrow). Both will be relocated later.

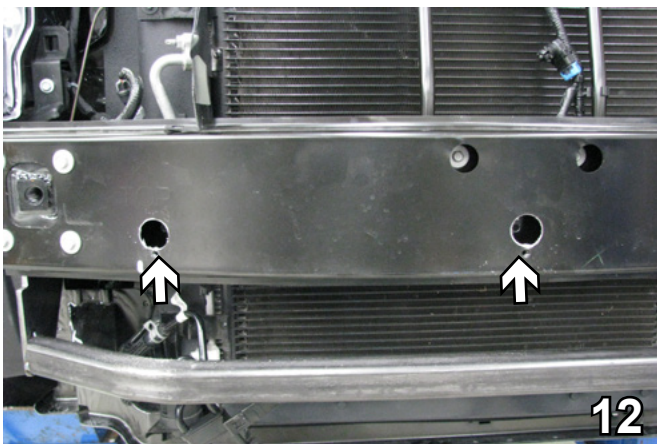
BX1690  
2010-15 Cadillac SRX (All Models)  
Installation Instructions



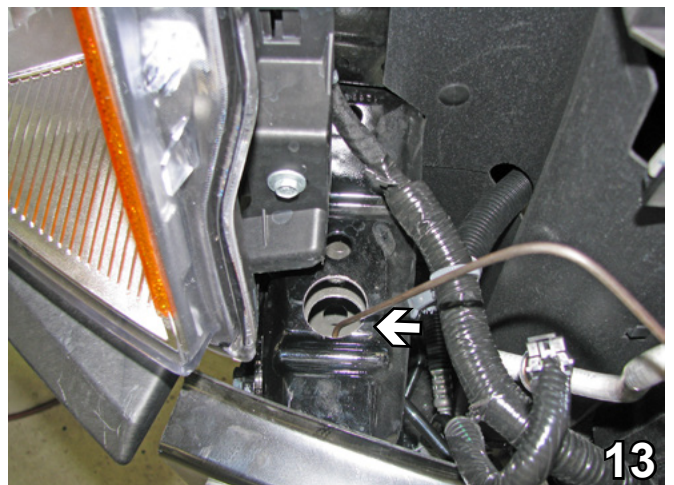
10. Trim the plastic, cut straight down along the seam and straight back under the bumper. Do this on both sides.



11. Using a 1/4" drill bit, drill into the holes above where the coolant line bolts were taken out. Drill thru the back side of the bumper.

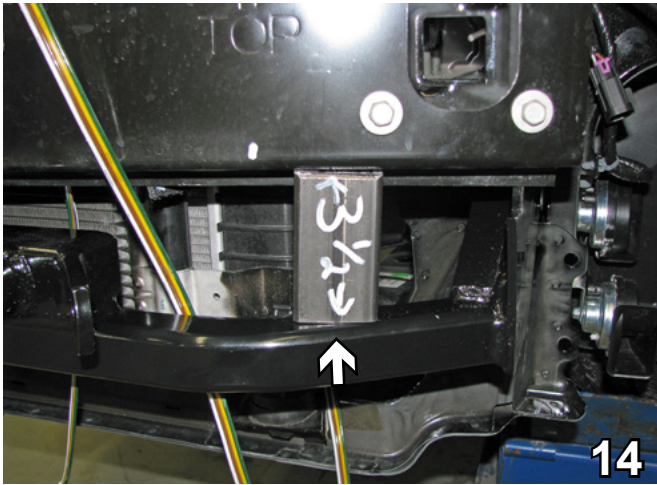


12. Using the 1-1/4" hole saw, drill out the holes in the face of the bumper for the insertion of the nuts. Reattach the coolant line to the back holes using 1/4"-20 x 1/2" hex bolts and 1/4"-20 whiz nuts.

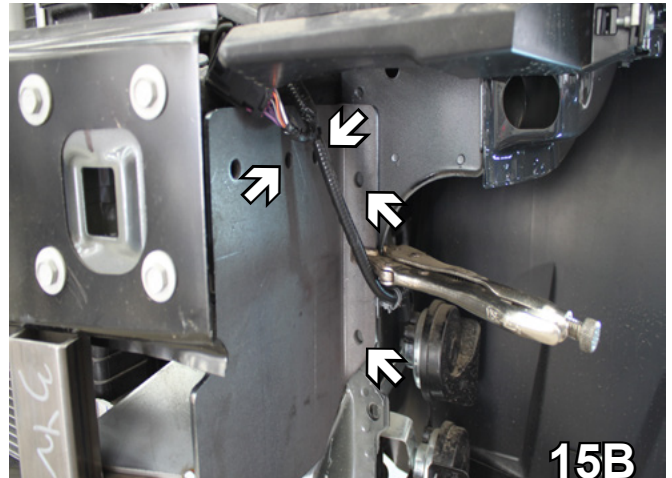
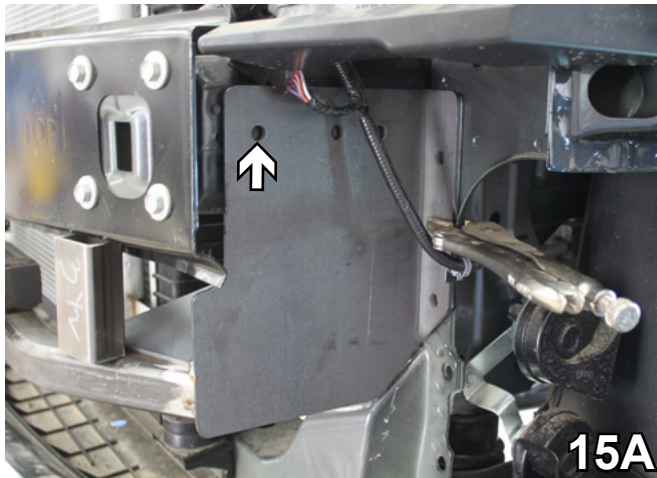


13. On the passenger side, on top where the wires have been removed, using a 1-1/4" hole saw, drill an access hole through two (2) layers.

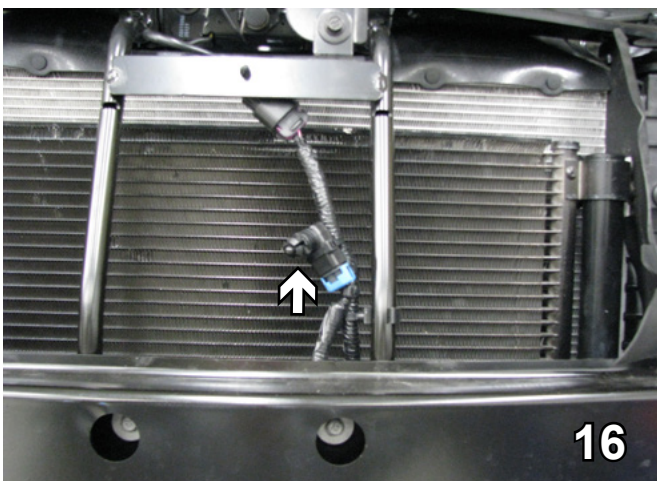
BX1690  
2010-15 Cadillac SRX (All Models)  
Installation Instructions



14. Position the baseplate onto the vehicle. Leaving a 3-1/2" gap from the bottom of the bumper to the top of the cross-tube of the baseplate. Level and securely clamp the baseplate to the frame.



15. Using a 13/32" drill bit, drill the top front hole on each side. Install a 3/8"-16 x 1-1/2" bolt, 3/8" lock washer into the hole and 3/8"-16 nut plate on the inside of the frame (15A). Do this on both sides of the vehicle and fully tighten all fasteners. Drill the remaining holes and install the appropriate hardware(15B). Do this on both sides of the vehicle.



16. Zip tie the temperature sensor to the radiator.

BX1690  
2010-15 Cadillac SRX (All Models)  
Installation Instructions

17. Attach the permanent baseplate safety cables to the provided convenience link on the baseplate. Additional options may interfere with suggested mounting; in this case secure the cables to a solid piece of the frame as described in the instructions included with the permanent baseplate safety cables. Be sure the safety cables do not rub against any hoses or moving parts. Do this to both sides of the vehicle.



18. Reattach the fascia. Some models may require trimming of the lower grille.

## CUSTOMER SERVICE COMMITMENT

Blue Ox® is committed to providing you with exceptional customer care throughout your lifetime with our products. Our team is here to assist you with any questions you may have regarding the performance of your product. Simply call (402) 385-3051 and you can speak with our customer care team.

Additionally, please visit our website to see which rallies our Destination America team will be attending. For a nominal fee, our service technician will service your towing system to ensure it's in proper working condition. Also, as a commitment to our customers, should you visit our factory, you can stay at our full service Blue Ox® campground at no charge along with enjoying a factory tour.

Again, thank you for being our customer and for the confidence you have shown in the performance of our products. It is because of customers like you we enjoy the success we have today.

© 2014 Blue Ox  
One Mill Road, Industrial Park  
Pender, Nebraska 68047  
Phone: (402) 385-3051  
Fax: (402) 385-3360  
[www.blueox.com](http://www.blueox.com)