



BX1694

2011-14 Chevy & GMC 2500/3500 (Includes HD)
2013 GMC Yukon 2500
Installation Instructions

Attachment Tab Height: 15-1/2"

Attachment Tab Width: 31-1/2"

Serial Number

Please read BOTH these Installation Instructions and the General Instructions prior to installing or operating this equipment.

- Blue Ox® towing products and accessories are intended to be installed by Blue Ox® Dealers who are familiar with our products and have the equipment and knowledge necessary to do "fit work". If needed, Blue Ox® Dealers can be found at www.blueox.com or by contacting our Customer Care Department at (402) 385-3051.
- Many Blue Ox® baseplates are designed to use existing holes and hardware to mount the baseplate to the towed vehicle. Even though bolts are there, do not assume they are adequate for baseplate mounting. Always use the hardware supplied in the hardware kit and existing hardware as specified in the installation instructions.

Bolt Torque Specifications

Torque in Foot-Pounds for Inch Bolts

Bolt Size	Grade 5	Grade 8
1/4"	10	14
5/16"	19	29
3/8"	33	47
7/16"	54	78
1/2"	78	119
5/8"	154	230
3/4"	257	380



Bolt Torque Specifications

Torque in Foot-Pounds for Metric Bolts

Bolt Size	Grade 8.8	Grade 10.9
6MM	6	8
8MM	16	22
10MM	31	40
12MM	54	70
14MM	89	117
16MM	161	230
18MM	222	318

If the front of your vehicle looks different than this, please contact us at (402)385-3051.

Reference your vehicle owner's manual for manufacturer's towing specifications.



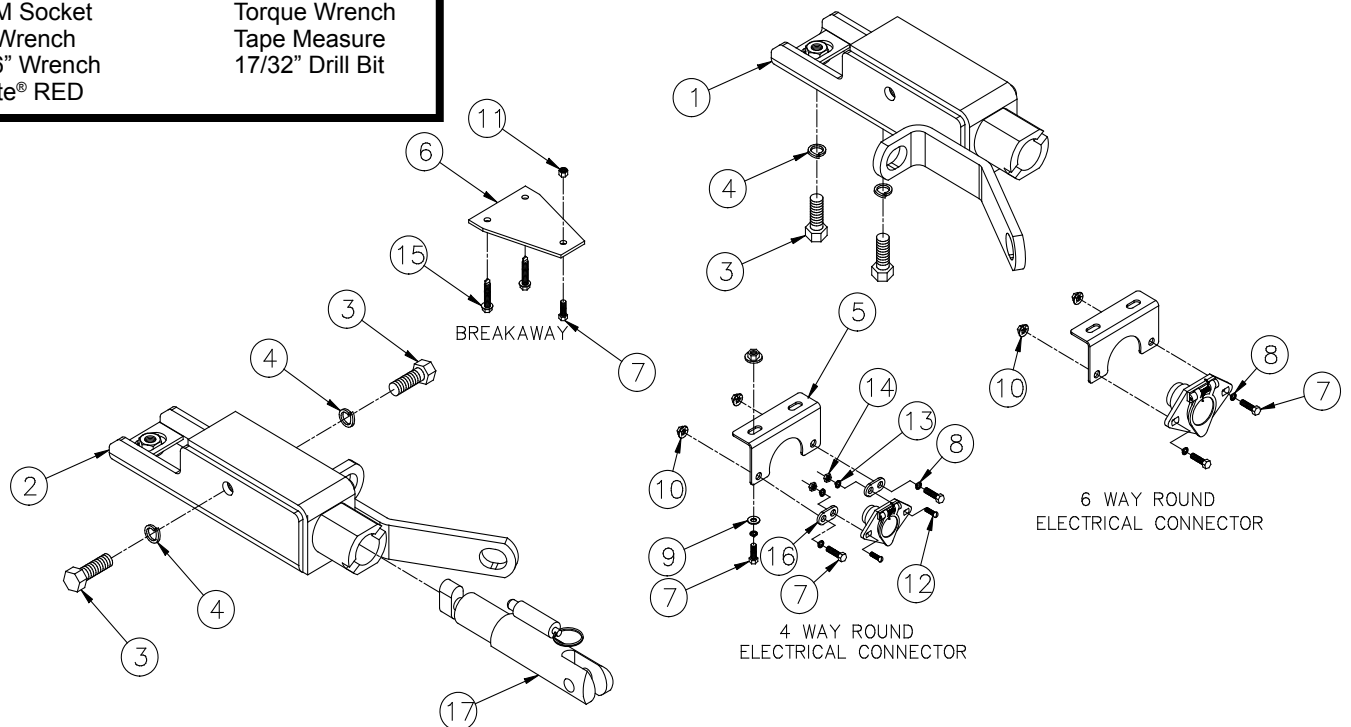
WARNING

Failure to read and follow these instructions could result in separation of the towed vehicle from the tow bar, causing property damage, loss of towed vehicle, personal injury or death.

BX1694
2011-14 Chevy & GMC 2500/3500 (Includes HD)
2013 GMC Yukon 2500
Installation Instructions

Parts List			
Ref. No.	Qty.	Part #	Description
1	1	61-6792	Weldment, BP, DS, BX1694
2	1	61-6793	Weldment, BP, PS, BX1694
3	8	201-0011	1/2-13 X 1 1/4" Hex Bolt Grd.5, ZP
4	8	203-0012	1/2" Lock Washer, ZP
5	1	101-6135	Bracket Electrical, 90 Degree
6	1	101-7598	Breakaway Bracket, BX1694
7	5	201-0050	1/4-20 X 3/4" Hex Bolt Grd.5, ZP
8	4	203-0008	1/4" Lock Washer, ZP
9	2	203-0001	1/4" Flat Washer, ZP
10	4	202-0069	1/4-20 Hex Flange Whiz Lock Nut, ZP
11	1	202-0102	1/4-20 Hex Nyl Nut, ZP
12	2	201-0192	10-32 X 1/2" Slot, Round Head Screw
13	2	203-0054	#10 Lock Washer
14	2	202-0047	#10-32 Hex Nut
15	2	201-0654	#10-16 X 1 Self Drilling Screw
16	2	101-5822	Adapter, 4 Way Connector
17	2	62-3468	Attachment Tab Assembly, Removable, SF/SB, 1 Hole
	2	226-0049	Permanent Baseplate Safety Cable 36" CL IV (Not Shown)
	2	229-0512	Quicklink, 1/2", ZP (Not Shown)
	2	290-0437	Receiver, Cap Plug (Black) (Not Shown)

Tools Required	
7MM Socket	3/4" Socket
10MM Socket	Drill
15MM Socket	Flat Screw Driver
18MM Socket/Wrench	Utility Knife
21MM Socket	Torque Wrench
1/4" Wrench	Tape Measure
11/16" Wrench	17/32" Drill Bit
Loctite® RED	



Important:

Use only genuine factory replacement parts on your baseplate. Do **NOT** substitute homemade or non-typical parts. If a bolt is lost or in need of replacement, for your safety and the preservation of your baseplate, be sure to use a replacement bolt of the same grade (In most cases it will be Grade 5, please reference the parts list above). Replacement parts may be ordered through your nearest Blue Ox® Dealer or Distributor. Failing to follow and/or altering these installation instructions in either installation or required equipment will void the manufacturer's warranty.

BX1694
2011-14 Chevy & GMC 2500/3500 (Includes HD)
2013 GMC Yukon 2500
Installation Instructions

Vehicle Weight: Due to the design of the removable tabs, the RangeFinder II, Acclaim and Ambassador tow bars can not be used. Adapters, except the BX8833 and BX88151, can not be used with this baseplate.

Installation Notes: The fascia and the bumper must be removed and replaced during installation. Some drilling is required. The tow hooks are removed during the baseplate installation. The tow hooks will not be reinstalled.

The dimensional variations between otherwise identical vehicles can be considerable. While the baseplate was designed for easy installation, it may be necessary to tailor the baseplate slightly to compensate for auto manufacturer's tolerances. These minor adjustments may include filing a hole slightly, bending electrical rods or bending end plates.

The BX8869 Bulb & Socket Wiring Kit is recommended.

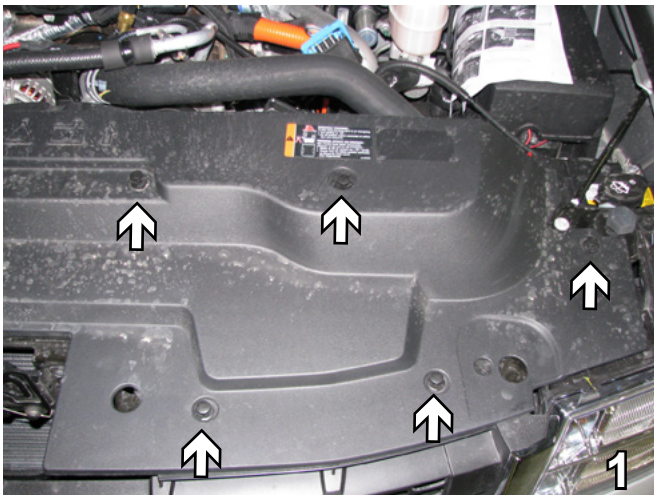


Possible location for the Bulb and Socket Wiring Kit (BX8869)

Handling of some cosmetic parts when installing this product may require the use of protective covers, rags, specialty tools, etc. to prevent damage.

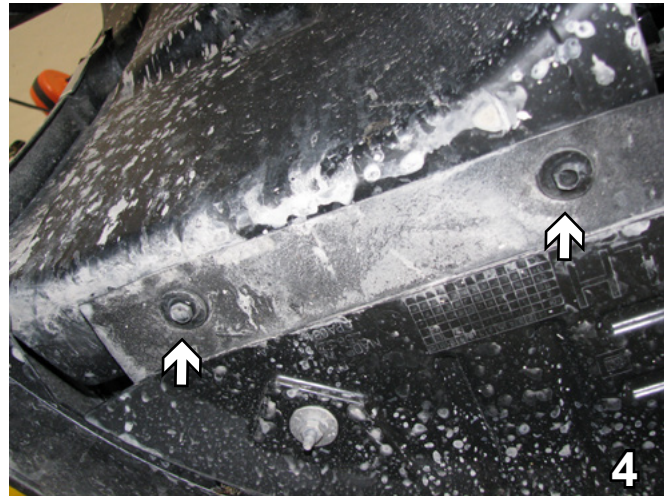
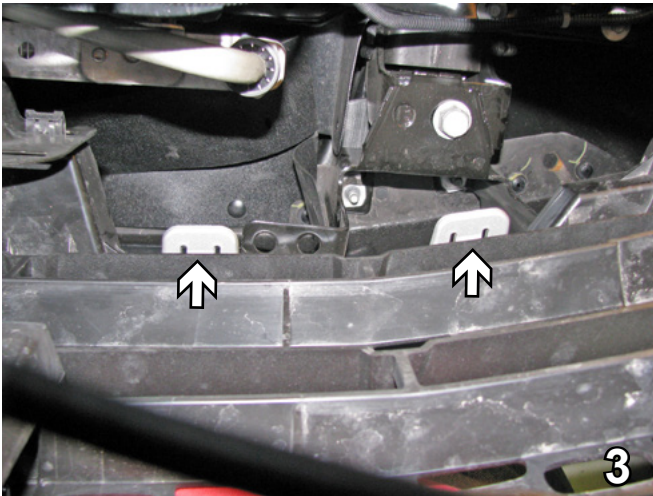
Do not use the towed vehicle for storing luggage, equipment, etc. This may cause you to exceed the towing capacity of the tow bar, baseplate, and its accessories.

Installation Instructions

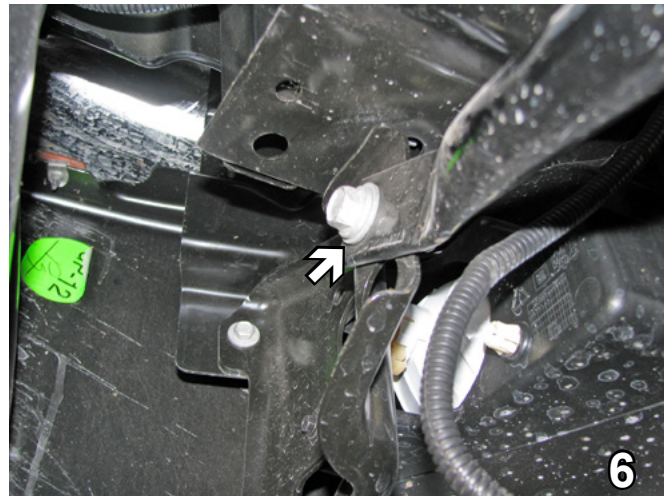
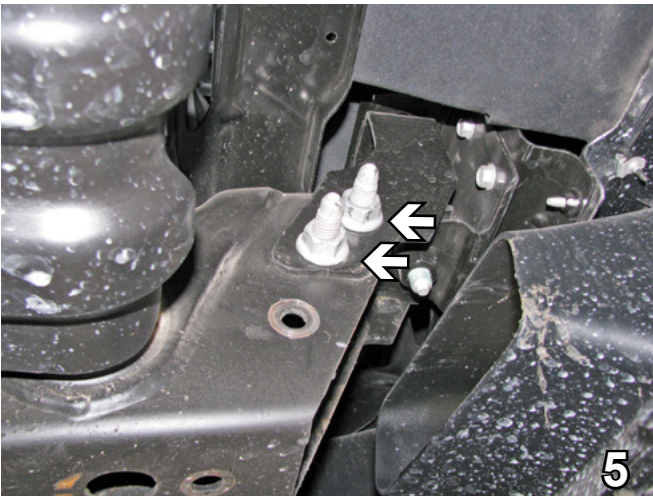


1. **3500 Models:** Remove the five push pins from the top plastic cover. Do this to both sides of the vehicle. Set the cover and the push pins aside to be reinstalled later.
2. **3500 Models:** Forward of the front tire using the 7MM socket, remove the two metric bolts. Do this to both sides of the vehicle. Set the bolts aside to be reinstalled later.

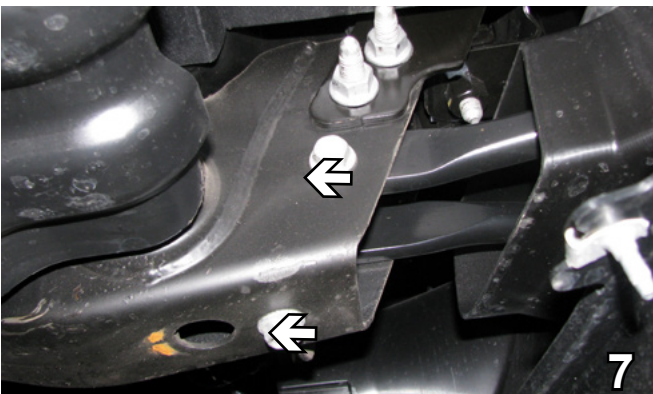
BX1694
2011-14 Chevy & GMC 2500/3500 (Includes HD)
2013 GMC Yukon 2500
Installation Instructions



- 3500 Models:** Pull the sides of the fascia out, releasing a series of clips. In the front reach behind the grille, push down and pull out on each of the six clips. Set the fascia aside carefully to be reinstalled later.
- 2500 Models:** Using the 10MM socket, remove the two metric bolts from under the bumper. Do this to both sides of the vehicle. Set the bolts aside to be reinstalled later.

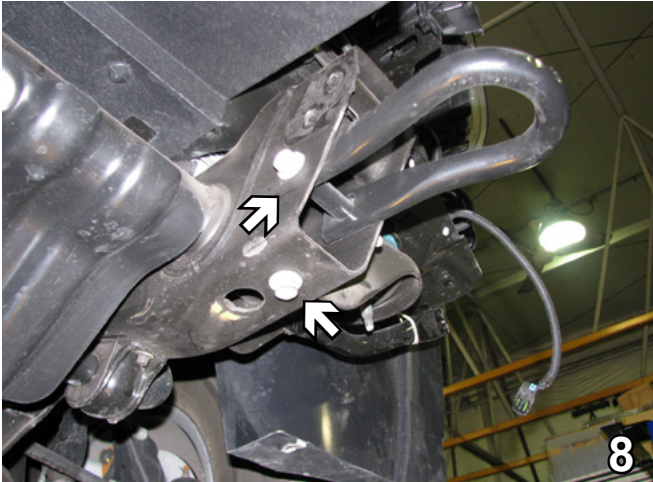


- Using the 21MM socket, remove the two metric bolts from the top of the bumper. Set the bolts aside to be reinstalled later.
- Using a 15MM socket, remove the bolt from the brace on the back side of the running light. Unplug the running lights. Do this on both sides. Remove the bumper and set it and the bolts aside to be reinstalled later.

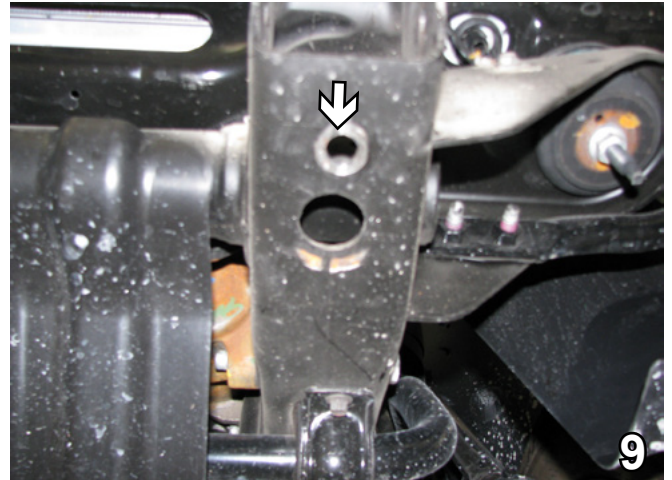


- Using the 18MM socket, remove the two metric bolts from the top and side of the tow hook. Do this to both sides of the vehicle.

BX1694
2011-14 Chevy & GMC 2500/3500 (Includes HD)
2013 GMC Yukon 2500
Installation Instructions



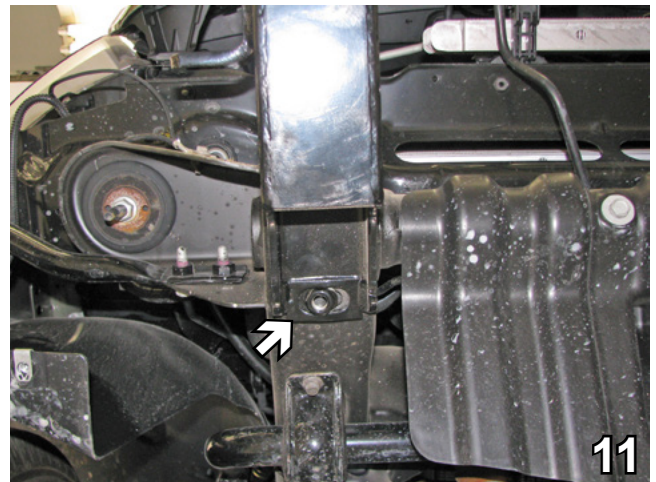
8. Using the 18MM socket, remove the two metric bolts from the side and bottom of the tow hook. Pull the tow hook forward. Do this to both sides of the vehicle. **The tow hooks will not be reinstalled.**



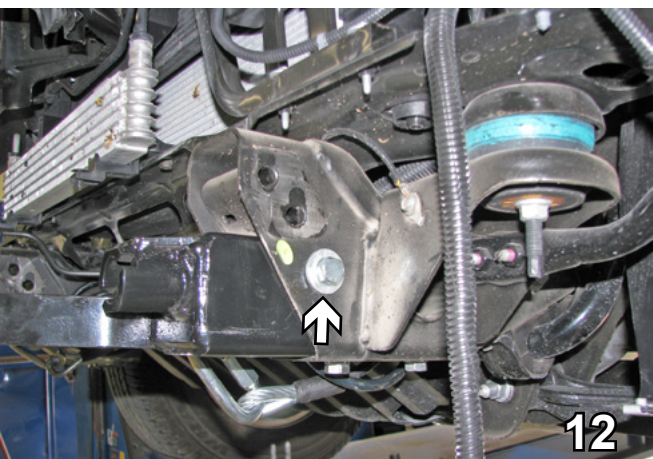
9. 2011 models only have one hole underneath that aligns with the baseplate front hole.



10. Center the baseplate upside down to the bottom of the frame rail. Temporarily attach the base plate with a bolt through the top to mark the location of the back hole before drilling. Do this on both sides.



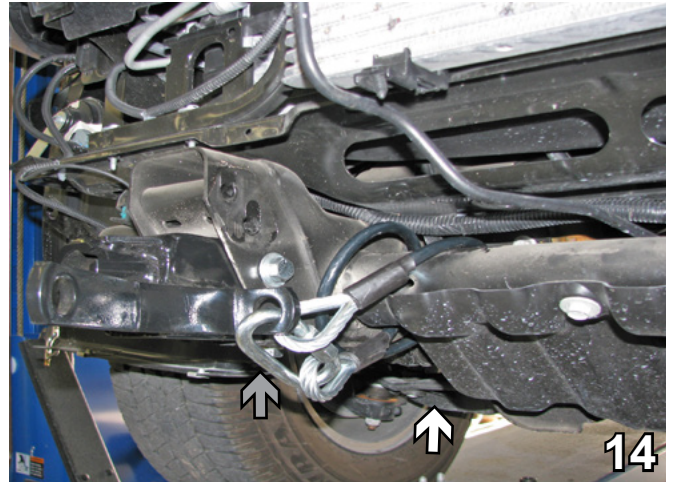
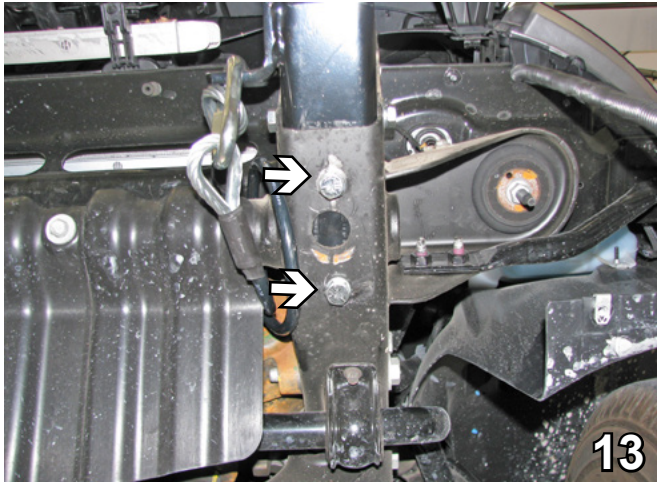
11. Slide the nut to the center, mark the location with a center punch, remove the base plate and drill the hole with 17/31" drill bit. Then slide the base plate onto the end of the frame. Do this on both sides.



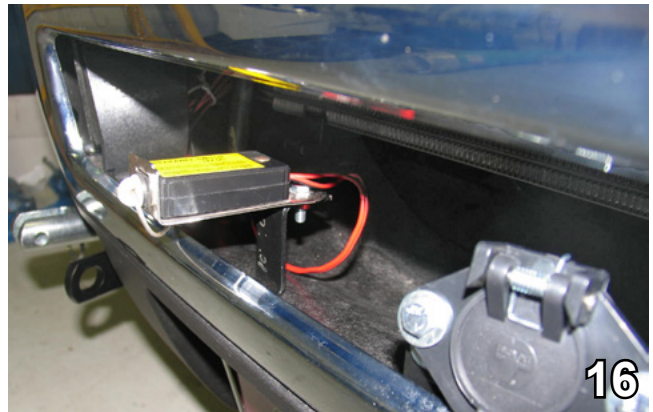
12. Insert 1/2-13 x 1 1/4" hex bolts with 1/2" lock washers into both sides of the base plate. Be sure to use Loctite red on all bolts. Do this on both sides of the vehicle.

BE SURE TO USE LOCTITE® RED ON ALL BOLTS BEFORE TIGHTENING. TIGHTEN ALL BOLTS ACCORDING TO THE TORQUE CHART ON THE FRONT PAGE OF THESE INSTRUCTIONS OR ON PAGE 3 OF THE BASEPLATE TOWING GENERAL INSTRUCTIONS.

BX1694
2011-14 Chevy & GMC 2500/3500 (Includes HD)
2013 GMC Yukon 2500
Installation Instructions



13. Insert 1/2-13 x 1 1/4" hex bolts with 1/2" lock washers into the two holes in the bottom of the base plate. Be sure to use Loctite red on all bolts. Do this on both sides of the vehicle.
14. Attach the permanent baseplate safety cables to the provided convenience link on the baseplate (gray arrow). The photo above shows the recommended installation of the cables to frame of vehicle (white arrow). Additional options may interfere with suggested mounting; in this case secure the cables to a solid piece of the frame as described in the instructions included with the permanent baseplate safety cables. Be sure the safety cables do not rub against any hoses or moving parts. Do this to both sides of the vehicle.



15. Reinstall the bumper. Install the electrical bracket, using 1/4-20 x 3/4" hex bolts with 1/4" flat washers and 1/4-20 whiz nuts.
16. **3500 Models:** Remove the push pin in the front opening which had been holding the air dam in place. Install the breakaway bracket, using 1/4-20 x 3/4" hex bolt with 1/4-20 hex nut.

Install the tow bar and safety cables according to the instructions provided in their packages. When demonstrating this to the customer, be sure to include all the contents and packages.

Do **NOT** substitute other devices if the tow bar pins and clips are misplaced.

DEALER or INSTALLER:
Be certain the user receives the
instruction sheets for their products.

Be sure that **ALL** electrical connections
are plugged in properly and functioning
BEFORE installing the fascia.

BX1694
2011-14 Chevy & GMC 2500/3500 (Includes HD)
2013 GMC Yukon 2500
Installation Instructions



Shown without removable tabs installed



2500 Shown with removable tabs installed



3500 Shown with removable tabs installed

CUSTOMER SERVICE COMMITMENT

Blue Ox is committed to providing you with exceptional customer care throughout your lifetime with our products. Our team is here to assist you with any questions you may have regarding the performance of your product. Simply call (402) 385-3051 and you can speak with our customer care team.

Additionally, please visit our website to see which rallies our Destination America team will be attending. For a nominal fee, our service technician will service your towing system to ensure it's in proper working condition. Also, as a commitment to our customers, should you visit our factory, you can stay at our full service Blue Ox campground at no charge along with enjoying a factory tour.

Again, thank you for being our customer and for the confidence you have shown in the performance of our products. It is because of customers like you we enjoy the success we have today.

If the baseplate is in an accident, it must be replaced. DO NOT use it again! An accident can cause unseen damage and using it again could result in more damage or serious injury. DO NOT use the baseplate if it is damaged or missing parts.



© 2012 Blue Ox
One Mill Road, Industrial Park
Pender, Nebraska 68047
Phone: (402) 385-3051 • Fax: (402) 385-3360
www.blueox.com