



**BX1826 Installation Instructions  
1996-04 Nissan Pathfinder  
Removable**

Serial No.

The front bumper fascia and metal bumper are removed for baseplate installation. Holes need to be drilled and the bumper fascia needs to be trimmed. DEALER OR INSTALLER: BE CERTAIN THE USER RECEIVES THE INSTRUCTION SHEET.



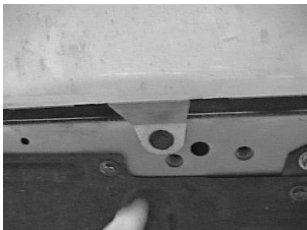
**Figure 1**

1. Open the hood and remove the center grill by depressing the clips with a needle nose pliers. Figure 1. Remove the push pins that are on top of the bumper fascia once the center grill is off.



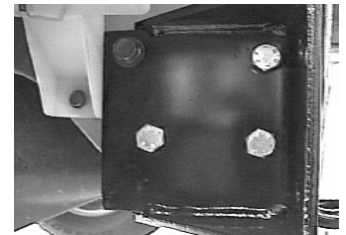
**Figure 5**

2. Remove the push pins and screws from the bottom of the bumper fascia. Figures 2 and 3. Also remove the push pins from the center grill section.



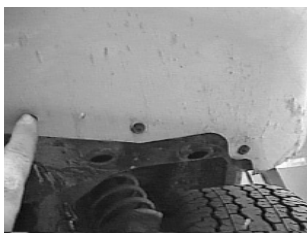
**Figure 2**

3. Pull the wheel well molding out from in front of the tire and remove the Hex bolt fastening the fender to the fascia. Figure 4. Remove the fascia from the vehicle and set aside.



**Figure 6**

4. Remove metric bolts from the left and right tie down bracket from each side of the vehicle. Figure 5.



**Figure 3**

5. Bolt the driver's and passenger's frame brackets over the top of tie down brackets on the vehicle. Use the bolts as shown in the drawing on page 2. Figure 6. **Note: Be sure and use loctite on each bolt before tightening. Tighten all bolts according to chart in the General Instruction Sheet.**



**Figure 7**

6. Bolt the baseplate to the frame brackets. Figure 7. Use the bolts as shown in the drawing on page 2.



**Figure 4**

7. Replace bumper fascia and any electrical wiring disconnected during the installation.

8. Install the tow bar and safety cables according to the instructions included in their packages. Do not substitute other devices if the tow bar pin and clip are lost.

**Automatic**

## Tools Required

10MM Wrench  
3/4" Wrench

Loctite Blue  
Phillips Screw Driver

7/16" Wrench

### Parts List

Ref. No.	Qty.	Part No.	Description
1	1	61-5467	Weldment, Base Plate, BX1826
2	2	62-3468	Attachment Tab, SF/SB
3	1	61-5499	Driver Side Frame Bracket, BX1826
4	1	61-5500	Passenger Side Frame Bracket, BX1826
5	4	201-0051	1/2-13 x 1 1/2 Hex Bolt, Grade 5
6	4	203-0012	1/2 Lock Washer
7	8	203-0005	1/2 Flat Washer
8	4	202-0005	1/2-13 Hex Nut
9	2	201-0979	#12-14 x 1" Self Drilling Screw, ZP
10	2	101-5822	Adapter, 4 Way Connector
11	2	201-0192	#10-32 x 1/2 Solt, RD. Screw
12	2	203-0054	#10 Lock Washer
13	2	202-0047	#10-32 Hex Nut
14	5	201-0423	10mm-1.25 x 35mm Hex Nut, Grade 8.8
15	5	203-0104	10mm Lock Washer
E	2		Existing Bolts, Tie Down Brackets
	2	226-0046	Baseplate Safety Cable, 36" CL III (Not Shown)
	2	229-0359	Quicklink, 3/8, ZP (Not Shown)
	2	290-0437	Receiver, Cap Plug (BLK) (Not Shown)

