



# BX1846

## 2012-14 Nissan Versa Sedan S/SV/SL Installation Instructions

Serial Number

Attachment Tab Height: 15"

Attachment Tab Width: 27"

Please read BOTH these Installation Instructions and the General Instructions prior to installing or operating this equipment.

- Blue Ox® towing products and accessories are intended to be installed by Blue Ox® Dealers who are familiar with our products and have the equipment and knowledge necessary to do "fit work". If needed, Blue Ox® Dealers can be found at [www.blueox.com](http://www.blueox.com) or by contacting our Customer Care Department at (402) 385-3051.
- Many Blue Ox® baseplates are designed to use existing holes and hardware to mount the baseplate to the towed vehicle. Even though bolts are there, do not assume they are adequate for baseplate mounting. Always use the hardware supplied in the hardware kit and existing hardware as specified in the installation instructions.

### Bolt Torque Specifications

Torque in Foot-Pounds for Inch Bolts

Bolt Size	Grade 5	Grade 8
1/4"	10	14
5/16"	19	29
3/8"	33	47
7/16"	54	78
1/2"	78	119
5/8"	154	230
3/4"	257	380



If the front of your vehicle looks different than this, please contact us at (402)385-3051.

**Reference your vehicle owner's manual for manufacturer's towing specifications.**

### Bolt Torque Specifications

Torque in Foot-Pounds for Metric Bolts

Bolt Size	Grade 8.8	Grade 10.9
6MM	6	8
8MM	16	22
10MM	31	40
12MM	54	70
14MM	89	117
16MM	161	230
18MM	222	318



## WARNING

Failure to read and follow these instructions could result in separation of the towed vehicle from the tow bar, causing property damage, loss of towed vehicle, personal injury or death.

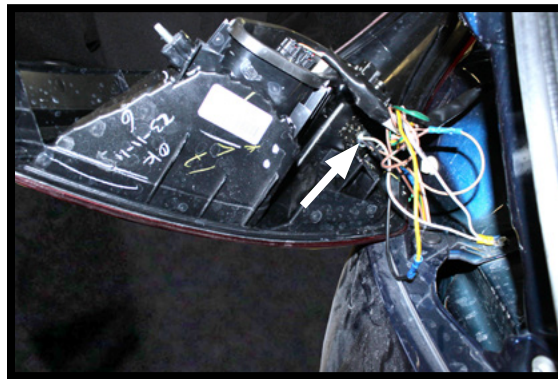
BX1846  
2012-14 Nissan Versa Sedan S/SV/SL  
Installation Instructions

**Instruction Notes:** The fascia and windshield washer fluid reservoir are removed and reinstalled for the baseplate installation. Some drilling and trimming is required.

Place all components that are removed on a flat, sturdy surface. All items will be reinstalled unless otherwise noted after the baseplate is installed.

The dimensional variations between otherwise identical vehicles can be considerable. While the baseplate was designed for easy installation, it may be necessary to tailor the baseplate slightly to compensate for vehicle manufacturer's tolerances.

The BX8869 Tail Light Wiring Kit is recommended for this vehicle.



Drill a hole according to the tail  
light wiring kit instructions.

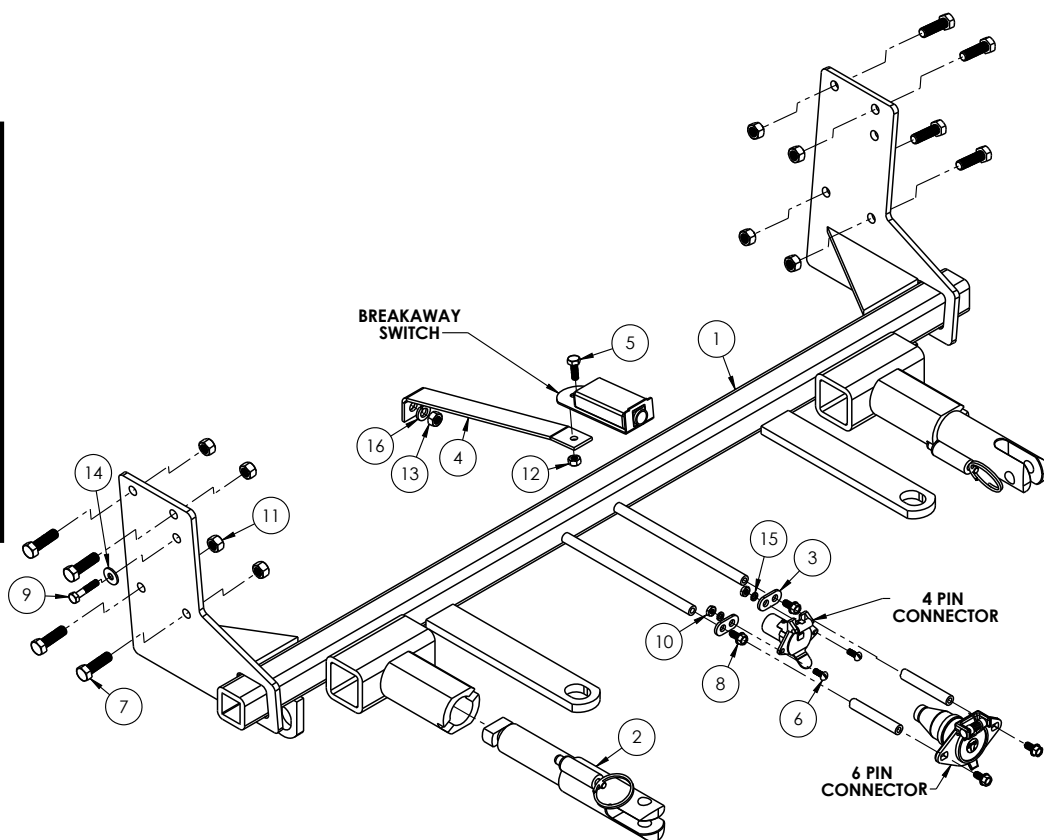
### **NOTICE**

- Handling of some cosmetic parts when installing this product may require the use of protective covers, rags, specialty tools, etc. to prevent damage.
- When using power drills be aware of the dangers of torque and drill bit length.
- When using a reciprocating saw be aware of objects behind the cutting surface.
- Use a good quality paint to spray cut edges of frame to prevent rusting.
- Be sure that **ALL** electrical connections are plugged in and accessories are functioning properly before reinstalling the fascia.
- The baseplate is computer tested to your vehicle's GVWR, exceeding this weight will void the manufacturer's warranty.
- Be sure to use Loctite® Red on all bolts before tightening. Tighten all bolts according to the torque chart provided.
- Dealer or installer be certain the user receives these instruction sheet.
- If the baseplate is in an accident, it must be replaced. **DO NOT** use it again! An accident can cause unseen damage and using it again could result in more damage or serious injury. **DO NOT** use the baseplate if it is damaged or missing parts.

**BX1846**  
**2012-14 Nissan Versa Sedan S/SV/SL**  
**Installation Instructions**

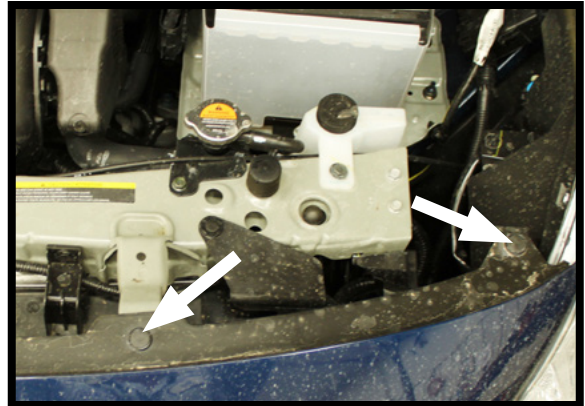
**Tools Required**

Large Vise Grip  
 Flat Screwdriver  
 Utility Knife  
 Phillips Screwdriver  
 Torque Wrench  
 Drill  
 Tape Measure  
 Loctite® RED  
 13/32" Drill Bit  
 10MM Socket  
 9/16" Socket  
 9/16" Wrench

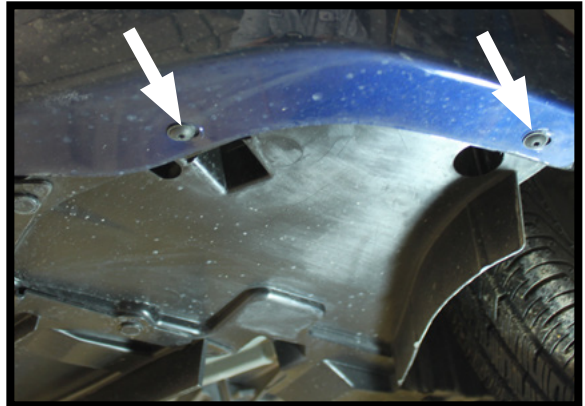


Item No.	Part No.	Description	Qty.
1.....	61-7006 .....	BX1846 Baseplate.....	1
2.....	62-3469 .....	Attachment Tab Assembly with Hole .....	2
3.....	101-5822 .....	4 Way Connector Adapter .....	2
4.....	102-7325 .....	BX1846 Breakaway Bracket.....	1
5.....	201-0050 .....	1/4"-20 x 3/4" Hex Head Bolt, Grade 5, ZP .....	1
6.....	201-0192 .....	#10-32 1/2" Round Slotted Head Screw.....	2
7.....	201-0368 .....	3/8"-16 x 1-1/4" Hex Head Bolt, Grade 5, ZP .....	8
8.....	201-0979 .....	#12-14 x 1" Self Drilling Screw, ZP.....	2
9.....	201-0655 .....	6MM-1.0 x 30MM Hex Head Bolt, Grade 8.8, ZP.....	1
10.....	202-0047 .....	#10-32 Hex Nut .....	2
11.....	202-0090 .....	3/8"-16 Hex Nylon Insert Lock Nut, ZP.....	8
12.....	202-0102 .....	1/4"-20 Hex Nylon Nut, ZP .....	1
13.....	202-0118 .....	8MM-1.25 Hex Nut, ZP.....	1
14.....	203-0001 .....	1/4" Flat Washer, ZP.....	1
15.....	203-0054 .....	#10 Lock Washer, ZP .....	2
16.....	203-0102 .....	8MM Lock Washer, ZP .....	1
17.....	226-0046(not shown) .....	Class III Safety Cables .....	2
18.....	229-0359(not shown) .....	3/8" Quicklink, ZP .....	4
19.....	290-0437(not shown) .....	Black Cap Plug Receiver.....	1
20.....	293-1339(not provided).....	Breakaway Switch .....	1
21.....	294-0805(not provided).....	4 Pin Connector.....	1
22.....	294-0902(not provided).....	6 Pin Connector.....	1

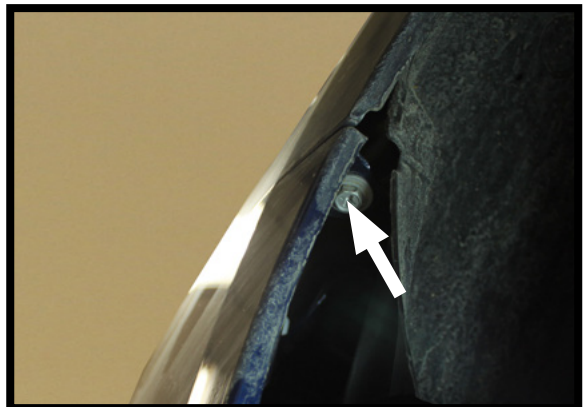
BX1846  
2012-14 Nissan Versa Sedan S/SV/SL  
Installation Instructions



1. Remove the five (5) push pins that are located in the front area, underneath the hood. There are two (2) push pins located on the outer edges on **BOTH** the driver side and the passenger side. There is also one (1) located in the center.

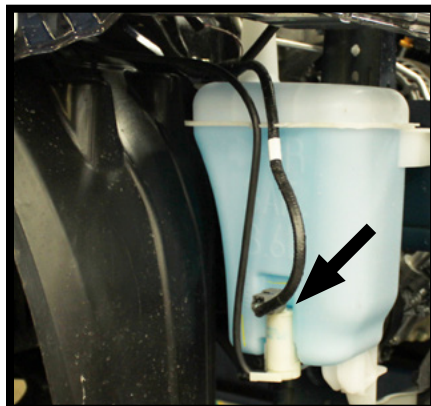
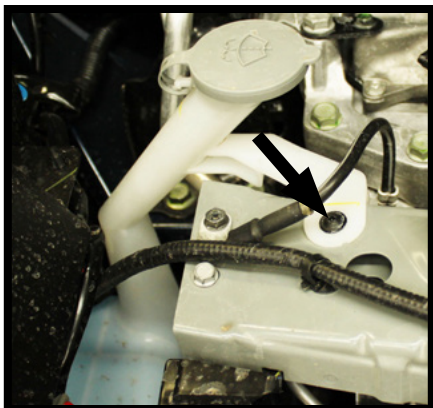


2. Using a 20 torx remove the two (2) screws underneath the vehicle on the outside edge. Towards the center there are three (3) push pins that need to be removed. Do this on **BOTH** sides of the vehicle.

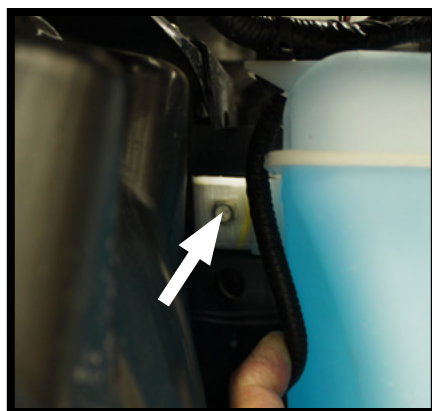
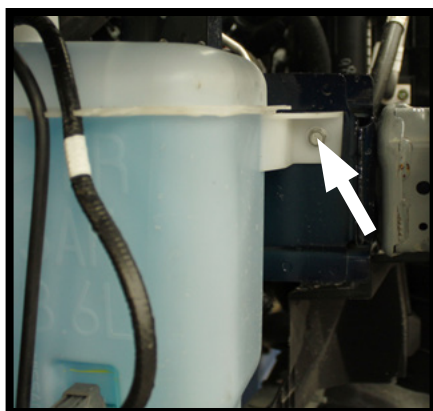
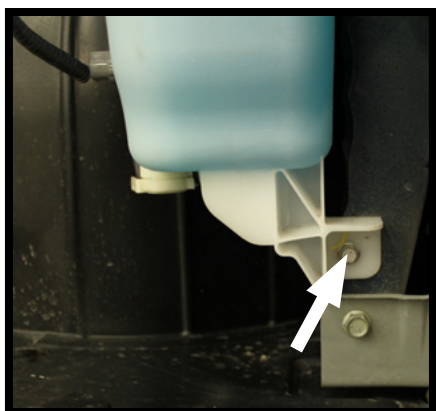


3. Remove the two (2) 10MM bolts that are located in the center.
4. Pull the splash guard back slightly. At the top portion of the wheel well area is a 10MM bolt. Using a 10MM socket remove this bolt. Do this on **BOTH** sides of the vehicle.

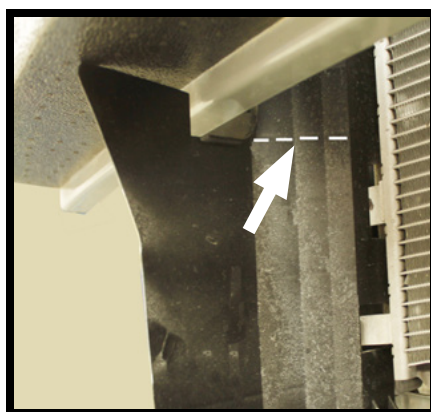
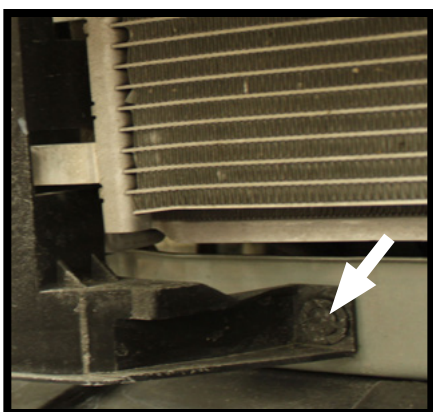
BX1846  
2012-14 Nissan Versa Sedan S/SV/SL  
Installation Instructions



5. With a Phillips screwdriver, remove the screw on top of the windshield wiper fluid reservoir. Next, disconnect the tubes and plug to prevent leakage. Set the reservoir off to the side temporarily.

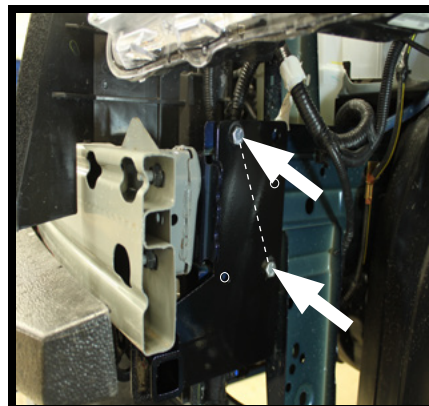
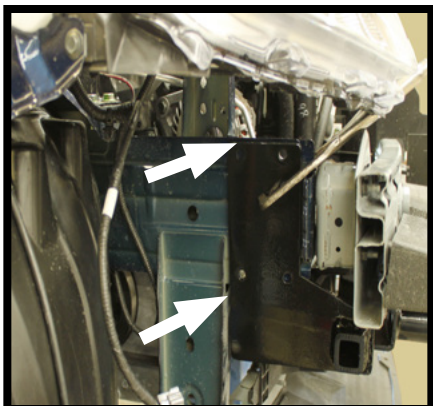


6. With a 10MM socket remove the three (3) bolts that hold the windshield wiper fluid reservoir in place. On the front of the reservoir there is one (1) bolt at the bottom and one (1) towards the top. On the backside of the reservoir is the 3rd bolt. It may be necessary to push back on the wheel well liner to access this bolt.



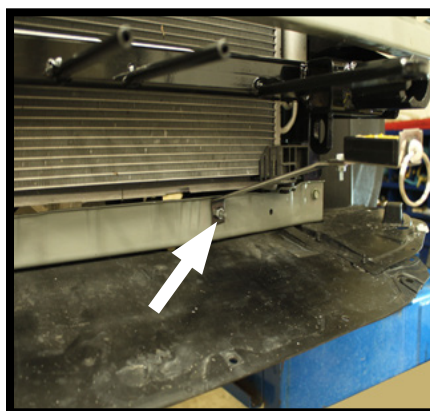
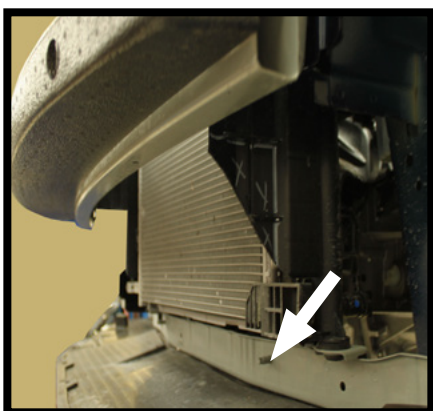
7. Release the push pin that is connected to the bumper. Using a utility knife cut straight across to remove the plastic guard. Do this on **BOTH** sides of the vehicle.

BX1846  
2012-14 Nissan Versa Sedan S/SV/SL  
Installation Instructions

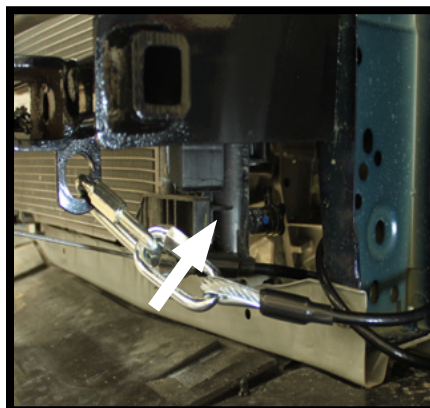
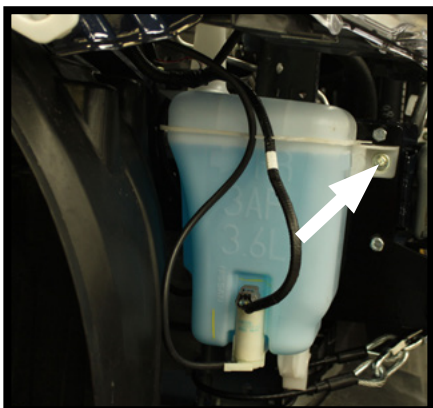


8. Slide the baseplate downward at a slight angle and then up so the baseplate frame runs parallel with the vehicle's main frame. The top of the baseplate endplate should be flush with the top of frame. The back edge of the baseplate endplate should be aligned with the front edge of the main frame.

Start two (2) of the 3/8"-16 x 1-1/4" hex head bolts and 3/8" nut diagonally from each other. Insert the remaining two (2) bolts and nuts. Once all the fasteners have been started tighten securely. Do this on **BOTH** sides of the vehicle.



9. Using the existing stud, attach the breakaway bracket and securely fasten with the 8MM x 1.25 nut that has been provided.

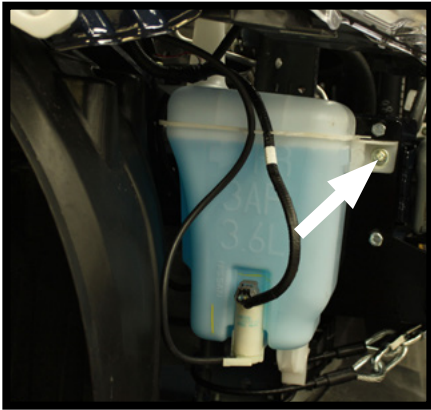


10. Reconnect the windshield wiper fluid reservoir using the existing fasteners except

11. Attach the permanent baseplate safety cables to the provided convenience link on

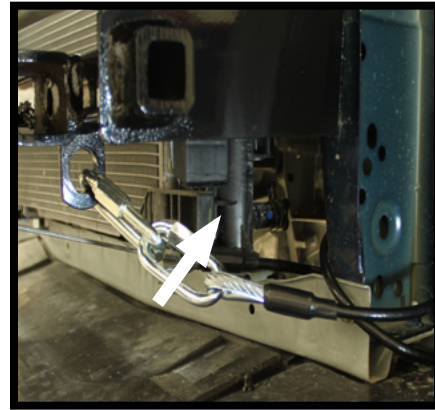
BX1846  
2012-14 Nissan Versa Sedan S/SV/SL  
Installation Instructions

*continued*



for the top, front hole. For this, use the 6MM-1.0 x 30MM hex head bolt and the 1/4" washer that has been provided.

*continued*



the baseplate. The photo above shows the recommended installation of the cables to frame of vehicle. Additional options may interfere with suggested mounting; in this case, secure the cables to a solid piece of the frame as described in the instructions included with the permanent baseplate safety cables. Be sure the safety cables do not rub against any hoses or moving parts. Do this on **BOTH** sides of the vehicle.

## CUSTOMER SERVICE COMMITMENT

Blue Ox® is committed to providing you with exceptional customer care throughout your lifetime with our products. Our team is here to assist you with any questions you may have regarding the performance of your product. Simply call (402) 385-3051 and you can speak with our customer care team.

Additionally, please visit our website to see which rallies our Destination America team will be attending. For a nominal fee, our service technician will service your towing system to ensure it's in proper working condition. Also, as a commitment to our customers, should you visit our factory, you can stay at our full service Blue Ox® campground at no charge along with enjoying a factory tour.

Again, thank you for being our customer and for the confidence you have shown in the performance of our products. It is because of customers like you we enjoy the success we have today.

© 2013 Blue Ox  
One Mill Road, Industrial Park  
Pender, Nebraska 68047  
Phone: (402) 385-3051  
Fax: (402) 385-3360  
[www.blueox.com](http://www.blueox.com)