



**BX1947 Installation Instructions
2001-03 Chrysler Sebring Convertible**

Serial No.

The front fascia and metal bumper is removed for baseplate installation. Holes need to be drilled. The attachment tabs are 18 inches center to center and at 14 inches height. Model notes: 1, 24,



1. Remove the six push pins from the top of grill.



2. Use a 7MM socket to remove the three metric screws just forward of front tire wheel well, both sides. Remove eight push pins from bottom of fascia.



3. Remove the two metric bolts on the top side of the grill with 10MM socket. Pull fascia forward and set aside.



4. With a phillips screw driver, remove screw metal bumper ends. Remove end caps and set aside.



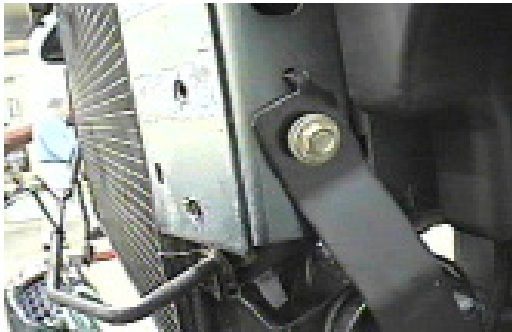
5. On the bottom of metal bumper is a temperature sensor and two push pins that need to be removed from coolant line. Remove four metric bolts on the inside of metal bumper end with a 13MM socket and set metal bumper aside.



6. Remove two push pins on the air dam, both sides and set aside.



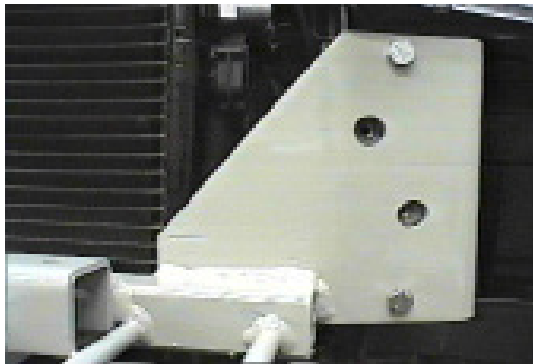
Strong As An Ox™



7. Unplug electrical connection from horn and remove horn bracket with a 10MM socket, then set aside. Factory horn bracket will not be reused.



8. Remove vacuum tank from driver's side with a 10MM socket and pull out of the way.



9. Hold baseplate in place so that top edge of end plates are flush with top frame webbing. Using the baseplate as a template, drill four holes on the front side of baseplate with the 13/32 drill bit. Insert items 3, 4, and 5, do not tighten.



10. Drill out the four mounting holes on the back side of metal bumper with a 13/32 drill bit. Install items 6, 7, and 8 with metal bumper and tighten all bolts. **Be sure and use loctite on all bolts before tightening.**



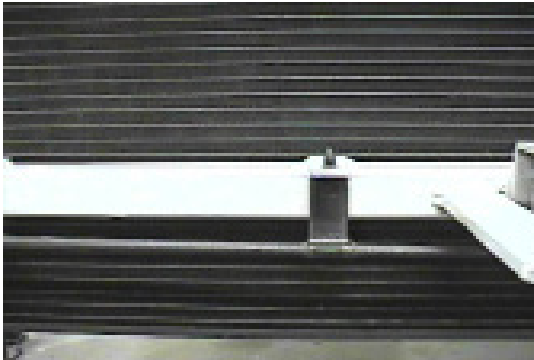
11. Using the baseplate as a template, drill four 13/32 holes on the under side of metal bumper. Insert item 2 into end of metal bumper to drill holes, tighten items 3 and 4 as shown in drawing on last page. **Be sure and use loctite on all bolts.**



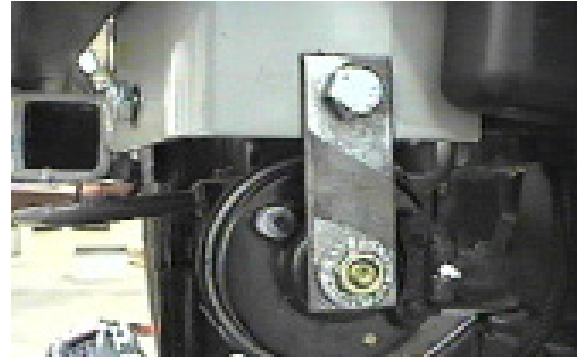
12. Drill remaining holes with 13/32 drill bit on the end plates. Use items 3, 4, and 5 according to drawing on last page. Reinstall end caps on metal bumper.



Strong As An Ox™



13. Insert push pin for coolant line, into brackets provided on baseplate and drill 1/4 inch hole in the bottom of metal bumper for temperature sensor.



14. Reinstall horn using bracket provided, item 9. **Be sure to use loctite on all bolts before**

15. Some trimming is required to air dam below metal bumper before replacing.

16. Replace fascia, some trimming may be required.

17. The dimensional variations between otherwise identical cars can be considerable. While the location and size of the holes in the baseplate were designed to allow for easy installation. It may be necessary to file a hole slightly.

18. Install tow bar and safety cables according to the instructions included in their packages. Do not substitute other devices if the tow bar pin or clip is lost.

19. DEALER OR INSTALLER: BE CERTAIN THE USER RECEIVES THE INSTRUCTION SHEET.



Note: If installing the BX8869 bulb and socket wiring kit, this is the recommended location for drilling the hole.

IMPORTANT: Use only genuine factory replacement parts on your Base Plate. Do not substitute homemade or nontypical parts. If a bolt is lost or in need of replacement, for your safety and the preservation of your Base Plate, be sure to use a replacement bolt of the same grade (Usually Grade 5, refer to parts list). Repair parts may be ordered through your nearest **Blue Ox** dealer or distributor.

38, and 59.



Tools Required

7MM Wrench
8MM Wrench
10MM Wrench

1/4" Drill Bit
9/32" Drill Bit
17/32" Drill Bit
Parts List

Phillips Screw Driver
Vise Grips
Loctite Blue

	Ref. No.	Qty.	Part No.	Description
1	1	1	61-5725	Weldment, Base Plate, BX1947
2	4	4	61-5590	Weldment, 3/8-16 x 1 1/4, Bolt Plate, with Wire
3	8	8	201-0368	3/8-16 x 1 1/4 Hex Bolt, Grd. 5, ZP
4	12	12	203-0010	3/8 Lock Washer, ZP
5	12	12	202-0003	3/8-16 Hex Nut, ZP
6	4	4	201-0446	8MM-1.25 x 30MM, Hex Bolt, Grd. 8.8, ZP
7	4	4	203-0102	8MM Lock Washer, ZP
8	4	4	203-0107	8MM Flat Washer, ZP
9	1	1	102-6080	Horn bracket
10	2	2	201-0979	#12-14 x 1" Self Drilling Screw, ZP
11	2	2	202-0047	#10-32 Hex Nut
12	2	2	203-0054	#10 Lock Washer
13	2	2	201-0192	#10-32 x 1/2 Slot, Rd. Hd. Screw
14	2	2	101-5822	Adapter, 4 Way Connector
	2	2	226-0046	Baseplate Safety Cable, 36" CL III (Not Shown)
	2	2	229-0359	Quicklink, 3/8, ZP (Not Shown)

