

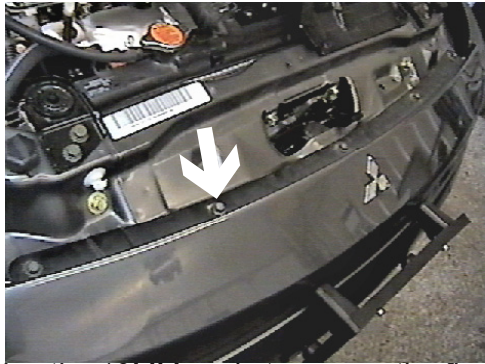


**BX1964 Installation Instructions  
2003 Mitsubishi Eclipse Spyder GTS**

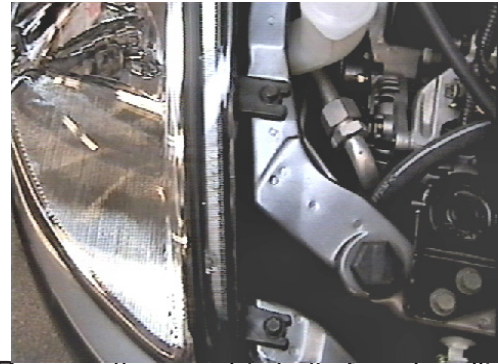
**Serial No.**

**Strong As An Ox™**

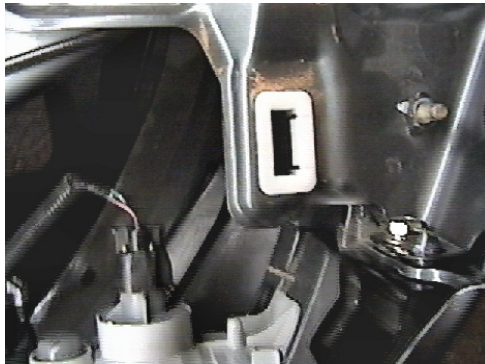
The headlight assembly, front fascia and horn bracket are removed for baseplate installation. Drilling is required. Trimming of air dam and fascia are required. The BX8869 is available for the vehicle. Attachment Tabs are 23 inches center to center and a height of 12 inches.



1. Using the 10MM socket, remove the five metric bolts from the top side of front fascia.



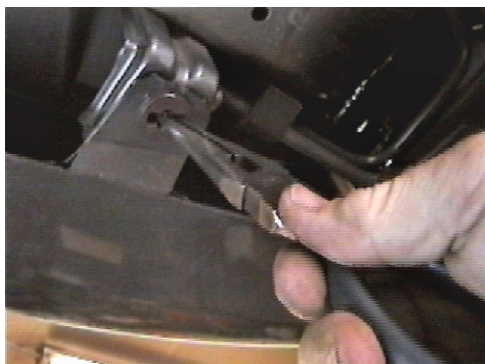
2. Remove three metric bolts from headlight assembly with the 10MM socket, pull forward, unplug electrical and set aside, both sides.



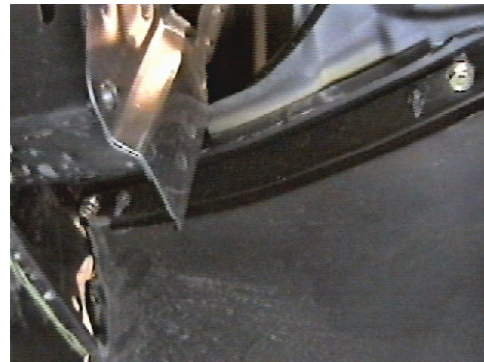
3. Just behind headlight assembly is one metric bolts to remove with the 10MM socket, both sides.



4. Forward of front tires remove three push pins on wheel well edge and three on the bottom edge of front fascia, both sides.



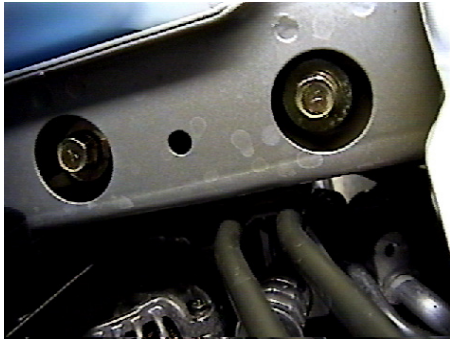
5. Using the needle nose pliers, remove one center-clip push pin on the bottom, middle of fascia, pull pin down and set aside.



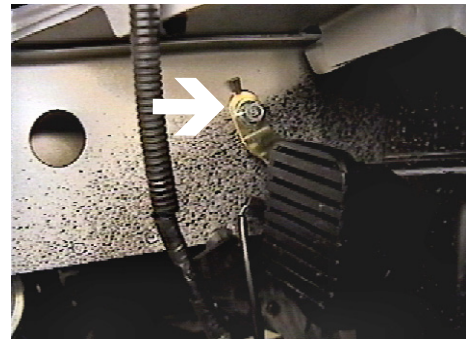
6. Just forward of front tires, inside wheel well, are two metric bolts to remove with the 10MM socket, both sides. Pull fascia forward and set aside.



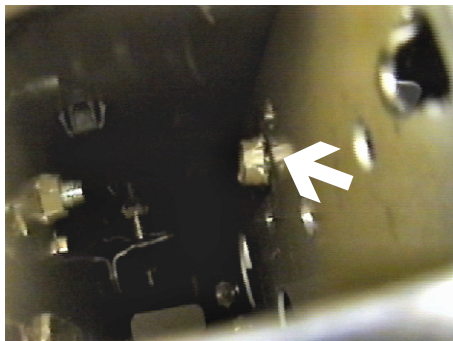
Strong As An Ox™



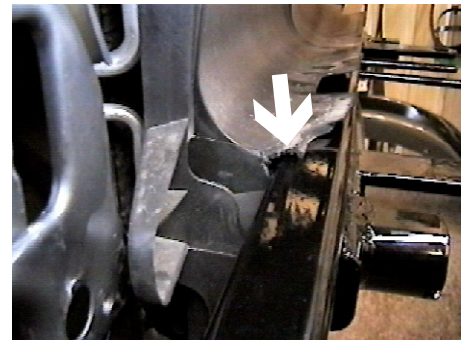
7. Remove two metric bolts from the bottom side of frame rails using the 14MM socket, both sides. Pull metal bumper forward and set aside.



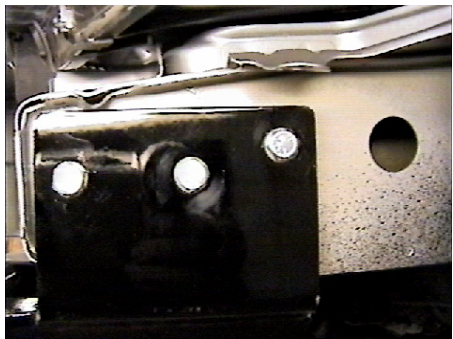
8. Using the 12MM socket, remove one metric bolt from horn bracket on driver's side. Relocate horn bracket straight back on frame rail approximately 1' to existing hole with a nut welded to the inside of the frame.



9. Using the chisel, remove the nut welded to the inside of the frame where horn bracket was originally attached.



10. Using the utility knife, trim air dam while holding baseplate to align with frame end as shown in step 11.



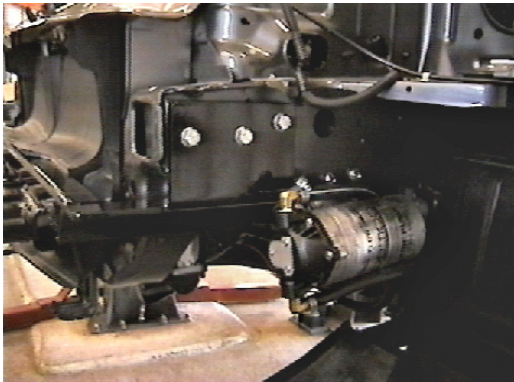
11. While maintaining a level position with the bottom of frame, hold spacer plate up as far as possible and 1/4" back from frame end. Using spacer plate as a template, drill holes with the 13/32" drill bit, both sides.



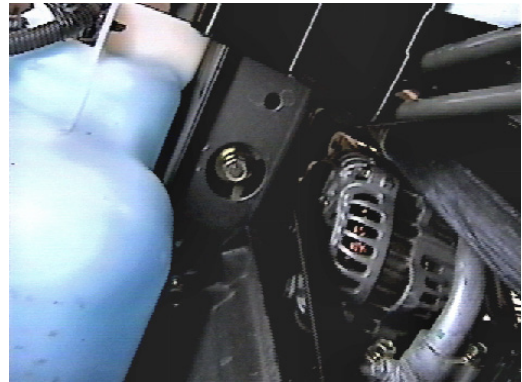
12. Insert backing plate into frame end to align with drilled holes, both sides.



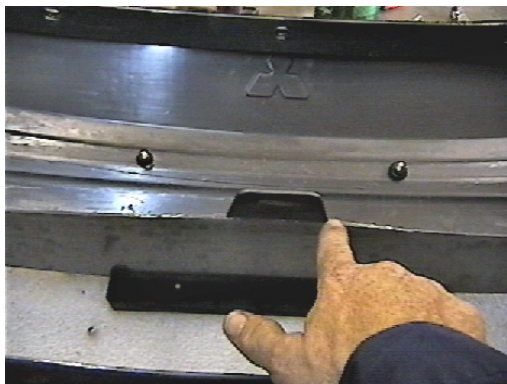
Strong As An Ox™



13. Hold baseplate and spacers to align with drilled holes while maintaining a level position with bottom of frame, both sides. Install 3/8" bolts and lock washers on both sides, tighten all bolts. **Be sure and use loctite on all bolts before tightening. Tighten all bolts according to torque chart in General Instruction sheet.**



14. Reinstall metal bumper to its original position. Only the back metric bolt will be able to be used on both sides. **Be sure and use loctite on all bolts before tightening. Torque all bolts according to torque chart in General Instructions.**



15. Lay fascia face down on a soft surface, remove tab just behind license plate bracket and reinstall fascia, trim as needed.
16. The dimensional variations between otherwise identical cars can be considerable. While the location and size of the holes in the baseplate were designed to allow for easy installation, it may be necessary to file a hole slightly to allow a bolt to clear.
17. Install the tow bar and safety cables according to the instructions included in their packages.
18. Do **not** substitute other devices if the tow bar pin and clip are lost.
19. **DEALER OR INSTALLER: BE CERTAIN THE USER RECEIVES THE INSTRUCTION SHEET.**

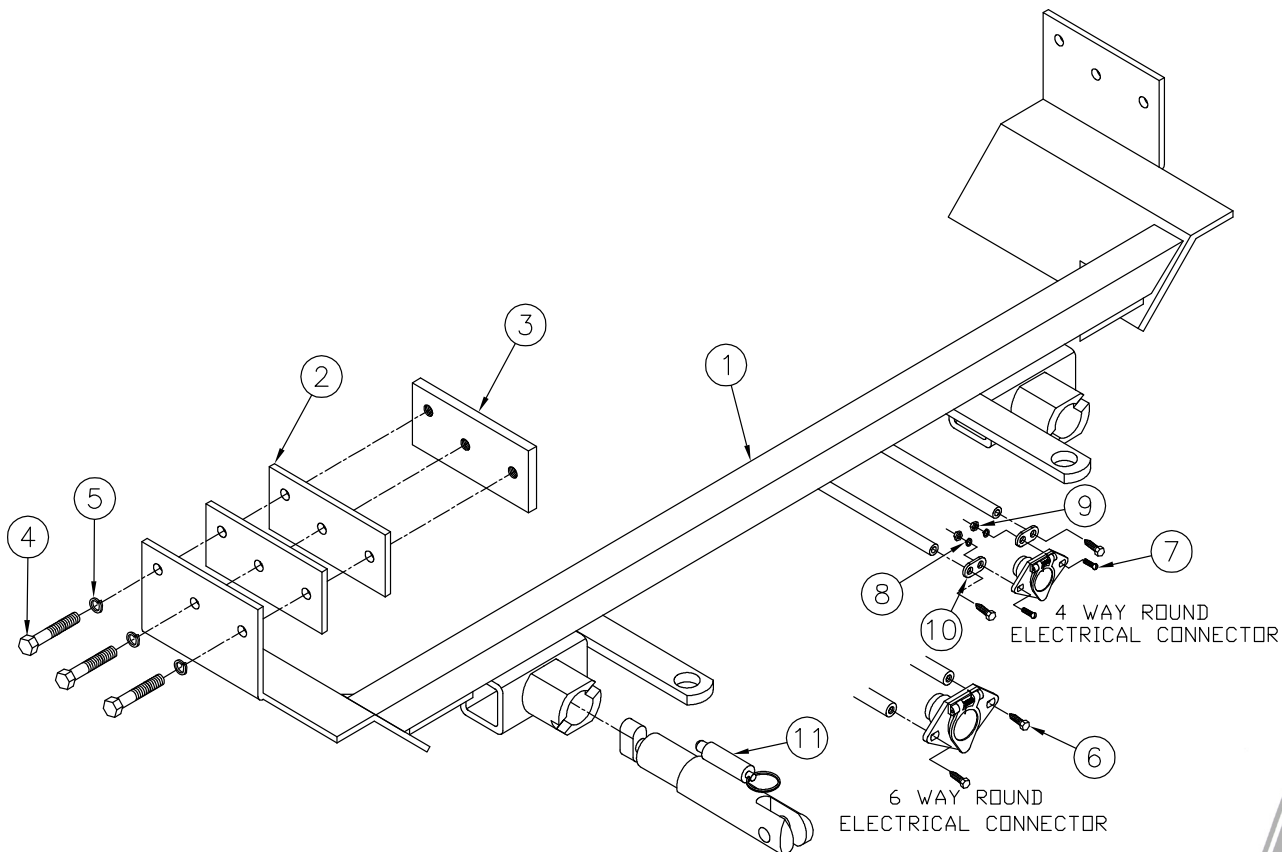


## Tools Required

7MM Socket	10MM Socket	11MM Socket
13MM Socket	Loctite	13/32" Drill Bit
Phillips Screw Driver	Vise Grips	9/16" Socket
Pry Bar	Utility Knife	

## Parts List

Ref. No.	Qty.	Part No.	Description
1	1	61-5948	Weldment, Base Plate, BX1964
2	4	102-6378	Spacer Plate, BX1954
3	2	102-6379	Backing Plate, THRD, BX1954
4	6	201-0440	3/8-16 x 1 1/2 Bolt, Grd. 5, ZP
5	6	203-0010	3/8 Lock Washer, ZP
6	2	201-0979	#12-14 x 1" Self Drilling Screw, ZP
7	2	201-0192	#10-32 x 1/2 Slot, Rd. Hd. Screw
8	2	203-0054	#10 Lock Washer
9	2	202-0047	#10-32 Hex Nut
10	2	101-5822	Adapter, 4 Way Connector
11	2	62-3468	Attachment, Assembly, SF/ SB (R)
	2	226-0046	Baseplate Safety Cable, 36" CL III (Not Shown)
	2	229-0359	Quicklink, 3/8, ZP (Not Shown)
	2	290-0437	Receiver, Cap Plug (BLK) (Not Shown)



**IMPORTANT:** Use only genuine factory replacement parts on your Base Plate. Do not substitute homemade or nontypical parts. If a bolt is lost or in need of replacement, for your safety and the preservation of your Base Plate, be sure to use a replacement bolt of the same grade (Usually Grade 5, refer to parts list). Repair parts may be ordered through your nearest **Blue Ox** dealer or distributor.