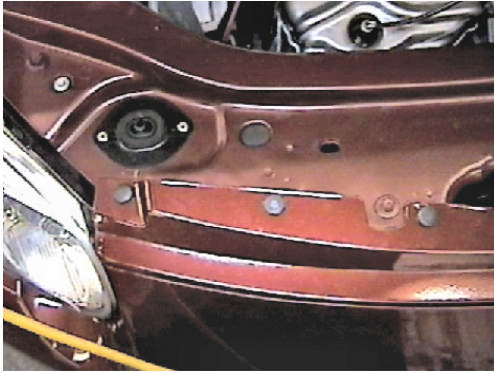




**BX1965 Installation Instructions
2004 Chrysler Sebring Convertible**

Serial No.

Strong As An Ox™ The headlight assembly, front fascia, horn bracket and windshield washer reservoir are removed for baseplate installation. Drilling is required. Trimming of air dam on metal bumper is required. The BX8869 is available for the vehicle. Attachment Tabs are 24 inches center to center and a height of 13 3/4 inches.



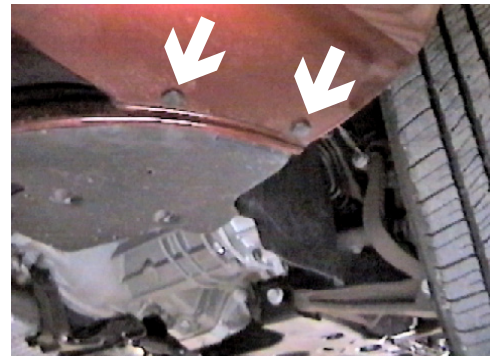
1. Remove the six push pins from the top edge of fascia.



2. Using the 7MM socket, remove two metric bolts just forward of front tires on fascia's edge, both sides.



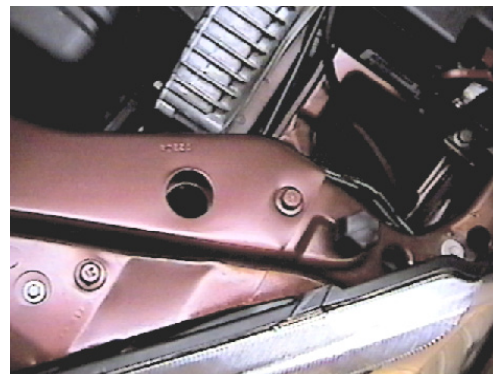
3. Using the 7MM socket, remove one metric bolt from fascia's upper corner just above bolts from step 2, both sides.



4. Remove the two push pins from the bottom edge of front fascia, just forward of front tires, both sides.



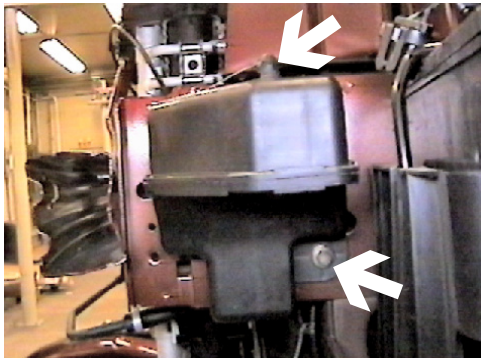
5. Remove the four push pins from the bottom side of fascia, pull fascia forward and set aside.



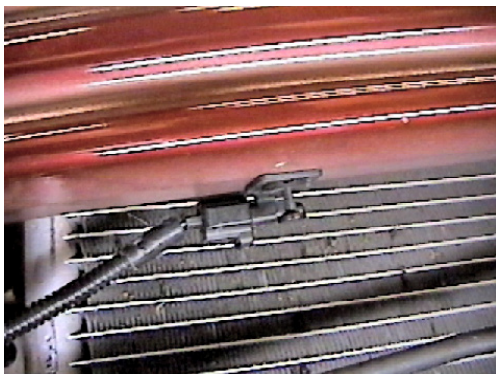
6. Just behind the head light assembly are two metric bolts to remove with the 7MM socket, pull assembly forward, unplug and set aside, both sides.



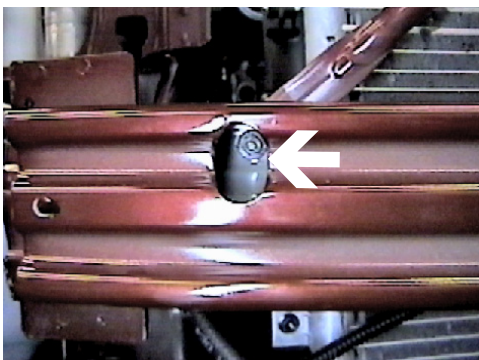
Strong As An Ox™



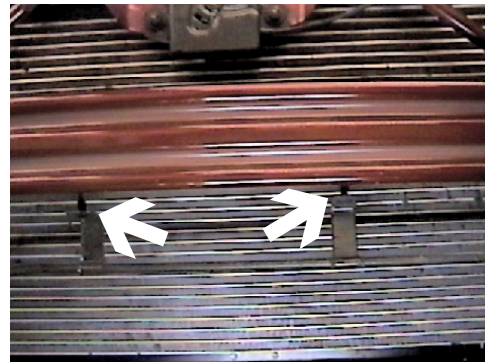
7. Using the 10MM socket, remove metric bolt on the driver's side, from the baffle and the hose on the top. Lift baffle straight up to unlock pins, pull away from frame and set aside.



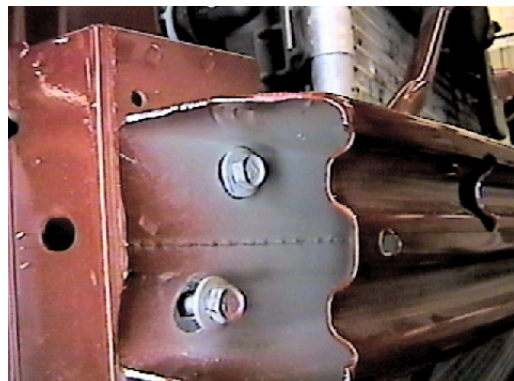
9. Remove push pin from temperature sensor and tie up away from bumper area.



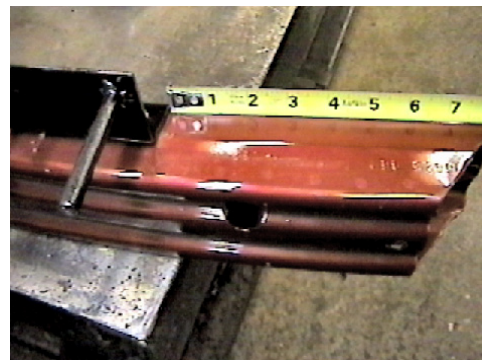
11. Using the 10MM socket, remove metric bolt from opening on front side of metal bumper, both sides. Pull bumper forward and set aside.



8. Remove two christmas tree push pins from the bottom of metal bumper on coolant line brackets.



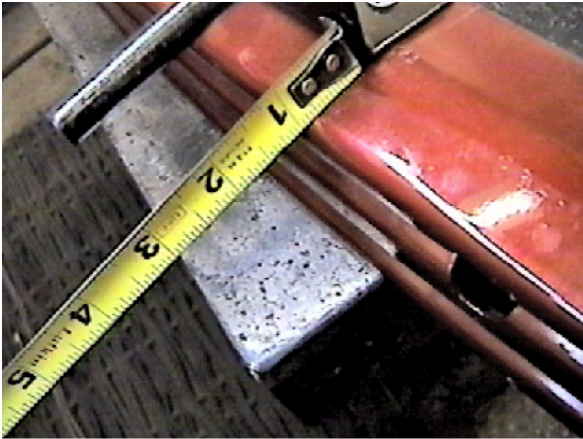
10. Remove two metric bolts from the open end of metal bumper with the 13MM socket, both sides.



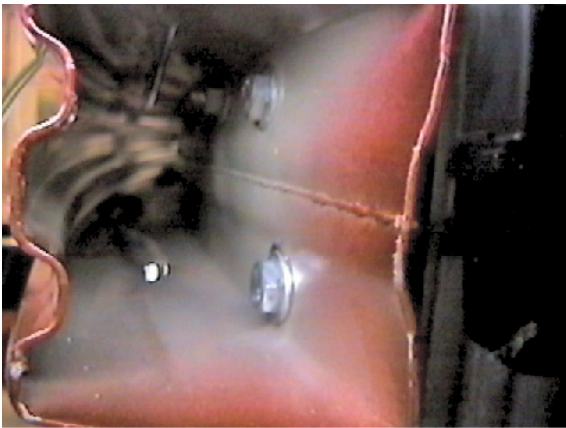
12. Set metal bumper on bench, top side up and align electrical bracket on the top side, 8 1/4" from the back corner of the bracket to the end of the metal bumper, as shown in photo.



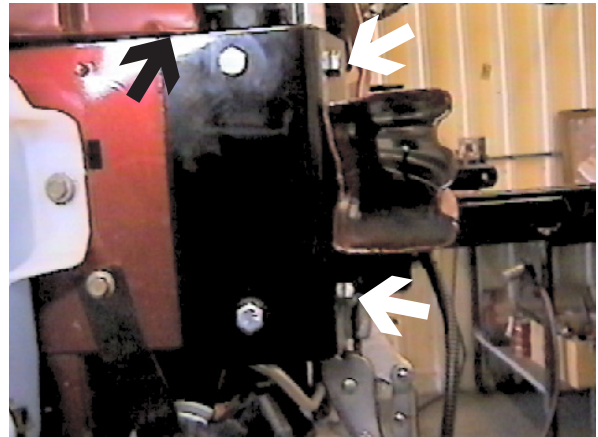
Strong As An Ox™



13. Align electrical bracket 1" back from the front edge of bumper on the driver's side of bracket and 13/16" back on the front edge of bumper on passenger's side of bracket, while maintaining measurement in step 6. Clamp to bumper with vise grip and drill in self tapping screws as shown in drawing on page 5.



15. Reinstall metal bumper using the existing two metric bolts from the front openings with the 10MM socket and install the four metric bolts, lock washers and flats from the end of metal bumper with the 13MM socket. **Be sure and use loctite on all bolts before tightening. Torque all bolts according to torque chart in General Instructions.**



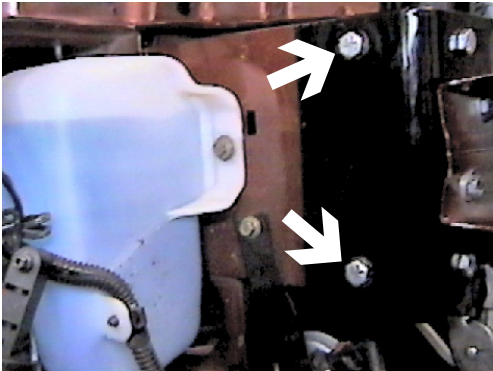
14. Align baseplate front holes to four bumper bolt holes, while maintaining a level position with top edge of frame webbing, both sides (black arrow). Using the baseplate as a template drill the two front holes with the 13/32" drill bit (white arrows), both sides. Tighten the 3/8" bolt, lock washer and hex nut, as shown in drawing on page 5. **Be sure and use loctite on all bolts before tightening. Torque all bolts according to torque chart in General Instructions**



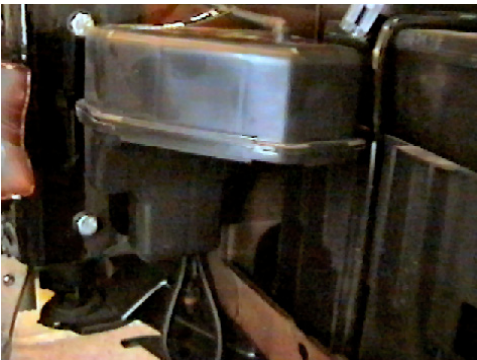
16. Using the baseplate as a template, drill the two holes on the bottom of metal bump, with the 13/32" drill bit. Insert the bolt plate into bumper ends and into drilled holes. Tighten the 3/8" hex nut and lock washer as shown in the drawing on page 5. **Be sure and use loctite on all bolts before tightening. Torque all bolts according to torque chart in General Instructions.**



Strong As An Ox™



17. Using the baseplate as a template, drill the two holes on baseplate into frame with the 13/32" drill bit, both sides. Insert 3/8" bolt drilled hole, tighten lock washer and hex nut on the back side of webbing, both sides. **Be sure and use loctite on all bolts before tightening. Torque all bolts according to torque chart in General Instructions.**



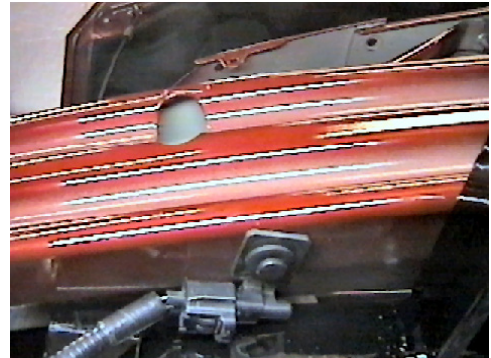
19. Insert the back locking pin into frame, slide down to lock, install existing metric bolt and reinstall hose in the top of baffle. **Notice: Front locking pin will not insert into frame because of baseplate.**

21. The dimensional variations between otherwise identical cars can be considerable. While the location and size of the holes in the baseplate were designed to allow for easy installation, it may be necessary to file a hole slightly to allow a bolt to clear.

22. Install the tow bar and safety cables according to the instructions included in their packages.

23. Do **not** substitute other devices if the tow bar pin and clip are lost.

24. **DEALER OR INSTALLER: BE CERTAIN THE USER RECEIVES THE INSTRUCTION SHEET.**



18. Temperature sensor will need to be relocated. Drill a 1/4" hole in the bottom of metal bumper, align sensor with drilled hole and insert push pin. Reinstall coolant line to brackets on baseplate using the existing christmas tree push pins.



20. Before installing fascia, slide into place and check to see if electrical bracket needs to be adjusted to come through opening properly and install. Reinstall head light assemblies. **Be sure that all electrical connections are plugged in properly.**



Strong As An Ox™

Tools Required

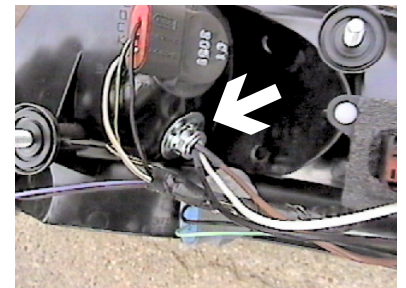
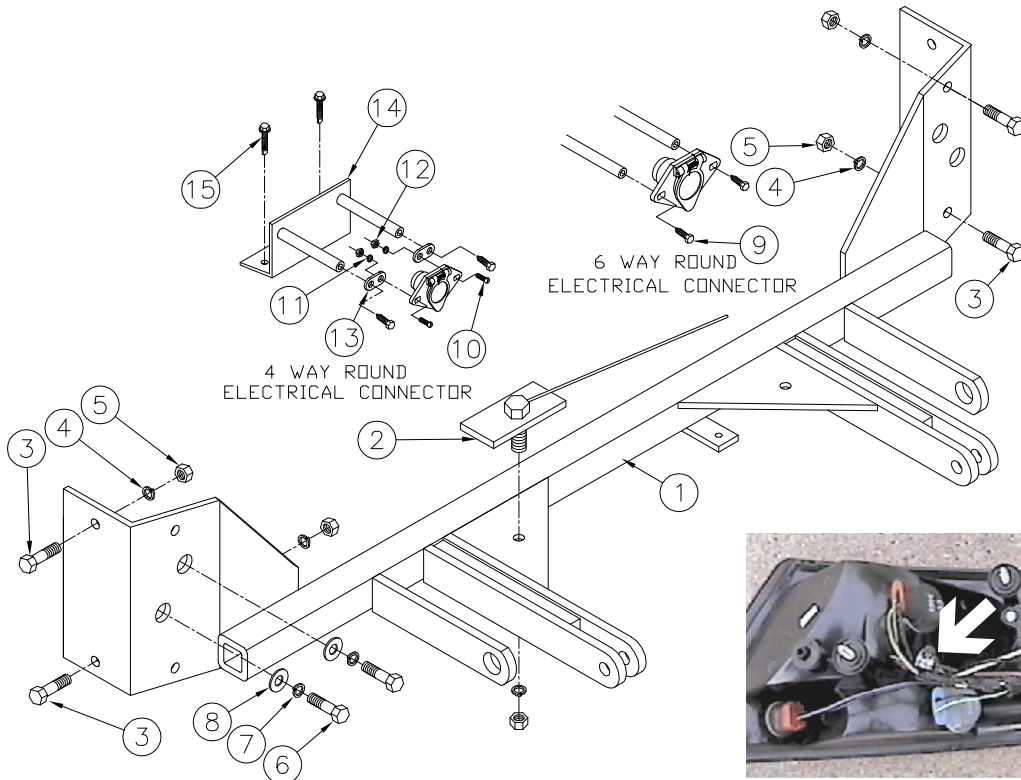
7MM Socket
9/16" Socket
Vise Grips

10MM Socket
Loctite
1/4" Drill Bit

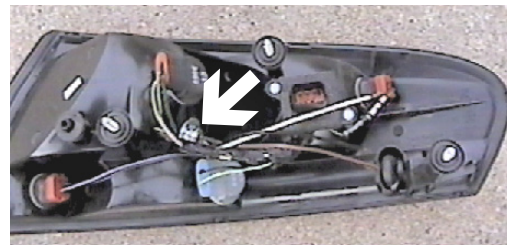
13MM Socket
13/32" Drill Bit

Parts List

Ref. No.	Qty.	Part No.	Description
1	1	61-5968	Weldment, Base Plate, BX1965
2	2	61-5590	Weldment, 3/8-16 x 1 1/4, Bolt Plate, with Wire
3	8	201-0368	3/8-16 x 1 1/4 Hex Bolt, Grd. 5, ZP
4	10	203-0010	3/8 Lock Washer, ZP
5	10	202-0003	3/8-16 Hex Nut, ZP
6	4	201-0446	8MM-1.25 x 30MM, Hex Bolt, Grd. 8.8, ZP
7	4	203-0102	8MM Lock Washer, ZP
8	4	203-0107	8MM Flat Washer, ZP
9	2	201-0979	#12-14 x 1" Self Drilling Screw, ZP
10	2	201-0192	#10-32 x 1/2 Slot, Rd. Hd. Screw
11	2	203-0054	#10 Lock Washer
12	2	202-0047	#10-32 Hex Nut
13	2	101-5822	Adapter, 4 Way Connector
14	1	61-5969	Weldment Electrical Rod, Bracket
15	2	201-0654	#10-16 x 1 Self Drilling Screw
	2	226-0046	Baseplate Safety Cable, 36" CL III (Not Shown)
	4	229-0359	Quicklink, 3/8, ZP (Not Shown)



Location for the Bx8869 on driver's side tail light assembly.



IMPORTANT: Use only genuine factory replacement parts on your Base Plate. Do not substitute homemade or nontypical parts. If a bolt is lost or in need of replacement, for your safety and the preservation of your Base Plate, be sure to use a replacement bolt of the same grade (Usually Grade 5, refer to parts list). Repair parts may be ordered through your nearest **Blue Ox** dealer or distributor.