



BLUE OX

Baseplate Installation Instructions

BX1992

2008 Mercedes Benz GL550 4Matic Installation Instructions

Serial Number

Please read BOTH these Installation Instructions and the General Instructions before attempting to install or operate this equipment.

- Blue Ox® towing products and accessories are intended to be installed by Blue Ox® Dealers who are familiar with our products and have the equipment necessary and knowledge to do "fit work". When necessary Blue Ox® Dealers can be found at www.blueox.com or by contacting our Customer Care Department at (402) 385-3051.
- Many Blue Ox® Baseplates are designed to use existing holes and hardware to mount the baseplate to the towed vehicle. Even though bolts are there, do not assume they are adequate for baseplate mounting. Always use hardware supplied in the hardware kit and existing hardware specified in the Baseplate Installation Instructions.

Attachment Tab Height: 14 1/4"

Attachment Tab Width: 22 3/4"

Bolt Torque Specifications
Torque in Foot-Pounds for Metric Bolts

Bolt Size	Grade 8.8	Grade 10.9
6MM	6	8
8MM	16	22
10MM	31	40
12MM	54	70
14MM	89	117

Confirm the towability and pre-towing procedures for your vehicle with the owner's manual or contact the vehicle's manufacturer for specific towing procedures.

Bolt Torque Specifications
Torque in Foot-Pounds for Inch Bolts

Bolt Size	Grade 5	Grade 8
1/4"	10	14
5/16"	19	29
3/8"	33	47
7/16"	54	78
1/2"	78	119
5/8"	154	230



If the front of your vehicle looks different than this, call us at (402) 385-3051.

! WARNING

Failure to read and follow these instructions could result in separation of the towed vehicle from the tow bar, causing property damage, loss of towed vehicle, personal injury or death.

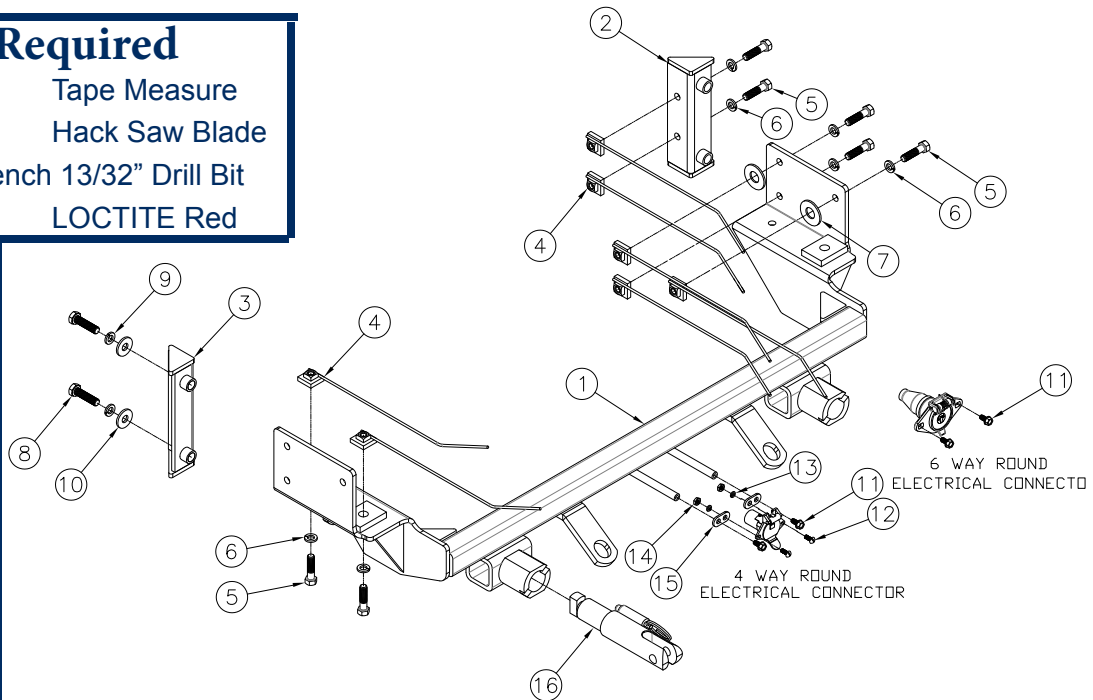
BX1992 2008 Mercedes Benz GL550 4Matic Installation Instructions

Parts List

Ref. No.	Qty.	Part #	Description
1	1	61-6794	WLDM'T, BP, BX1992
2	1	61-6795	WLDM'T, BACK SUPPORT, DS, BX1992
3	1	61-6796	WLMD'T, BACK SUPPORT, PS, BX1992
4	14	61-5208	WLD, NUT PLT, 1/4X1X1, 3/8"/14"WIRE
5	14	201-0440	3/8-16 X 1 1/2 HEX BOLT, GRD.5, ZP
6	14	203-0010	3/8 LOCK WASHER, ZP
7	4	203-0005	1/2 FLAT WASHER, ZP
8	4	201-0518	10MM-1.5 X 40MM HEX BLT,GR 10.9, ZP
9	4	203-0104	10MM LOCK WASHER, ZP.
10	4	203-0103	10MM FLAT WASHER, ZP.
11	2	201-0979	#12-14 x 1" Self Drilling Screw, ZP
12	2	201-0192	10-32 X 1/2 SLOT, RD. HD. SCREW
13	2	203-0054	#10 LOCK WASHER
14	2	202-0047	#10-32 HEX NUT
15	2	101-5822	ADAPTER, 4 WAY CONNECTOR
16	2	62-3468	ATT TAB ASSY, REM, SF/SB, 1 HOLE
	1	107-1801	TUBE, 3/4 OD X 11GA X 1/2 INCH (Not Shown)
	1	201-0443	3/8-16 X 1 HEX BOLT GRD.5, ZP (Not Shown)
	1	201-0655	6MM-1.0 X 30MM HEX BOLT, GRD8.8,ZP (NS)
	1	202-0071	3/8-16 HEX FLANGE WHIZ LOCK NUT, ZP (NS)
	1	203-0001	1/4 FLAT WASHER, ZP (Not Shown)
	2	226-0049	BASEPLATE SAFETY CABLE, 36" CL IV (NS)
	4	229-0512	QUICKLINK, 1/2, ZP (Not Shown)
	2	290-0437	RECEIVER, CAP PLUG (BLK) (Not Shown)

Tools Required

10MM Socket	Tape Measure
13MM Socket	Hack Saw Blade
16MM Socket/Wrench	13/32" Drill Bit
17MM Socket	LOCTITE Red
9/16" Socket	
11/16" Wrench	
T25 Torx	
T27 Torx	
T45 Torx	
T55 Torx	
E12 Torx	
Large Vise Grip	
Drill	
Flat Screwdriver	
Torque Wrench	



Important:

Use only genuine factory replacement parts on your baseplate. Do NOT substitute homemade or non-typical parts. If a bolt is lost or in need of replacement, for your safety and the preservation of your baseplate, be sure to use a replacement bolt of the same grade (In most cases it will be Grade 5, please reference the parts list above). Replacement parts may be ordered through your nearest Blue Ox® Dealer or Distributor, or call our Customer Care Team at (402)385-3051. Failing to follow and/or altering these installation instructions in either installation or required equipment will void the manufacturer's warranty. Towing behind a non-motorized vehicle will void the warranty.

BX1992

2008 Mercedes Benz GL550 4Matic

Installation Instructions

Removable Tab:

The weight of this vehicle is near the Class III, 5,000 lbs. rating limitations. Some models, depending on options, may well exceed this 5,000 lb. rating. Be sure to confirm the weight of your individual vehicle before towing. As of 1999 the Aventa II™ is now rated 10,000 lbs. and either the Aventa II™ or the Alexis™ tow bar must be used for these applications.

Tow Bar Adapters are NOT to be used with vehicle's weighing over 5,000 lbs.

Instructions:

The antenna, grille, fascia, headlights, bumper, tires, bolts and push pins are removed and reinstalled for the baseplate installation. Drilling is required. Trimming of the bumper and the air dam is required.

The dimensional variations between otherwise identical vehicles can be considerable. While the baseplate was designed for easy installation, it may be necessary to tailor the baseplate slightly to compensate for auto manufacturer's tolerances. These minor adjustments may include filing a hole slightly, bending electrical rods or bending end plates.

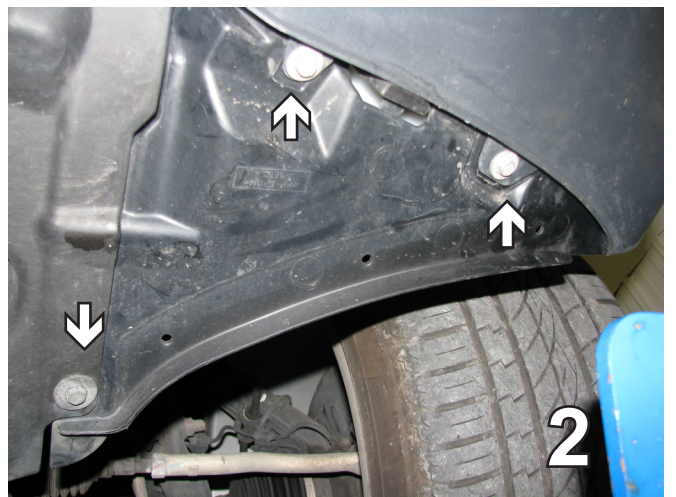
The BX8869 Bulb and Socket Wiring Kit is available for this vehicle.



Installation Instructions



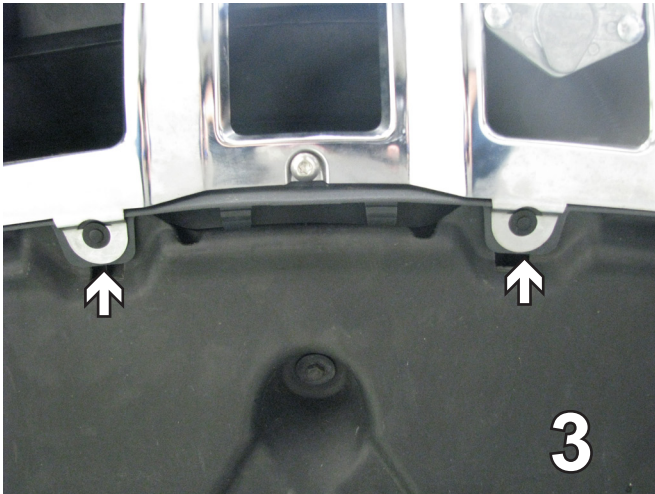
1. Remove three push pins just forward of the front tire on the wheel well. In the corner of the fascia using a T25 Torx, remove one screw. Do this on both sides. Set the push pins and the screw aside to be reinstalled later.



2. Forward of the front tire on the bottom of the fascia, remove three metric bolts. Do this on both sides. Set the bolts aside to be reinstalled later.

Handling of some cosmetic parts when installing this product may require the use of protective covers, rags, specialty tools, etc. to prevent damage.

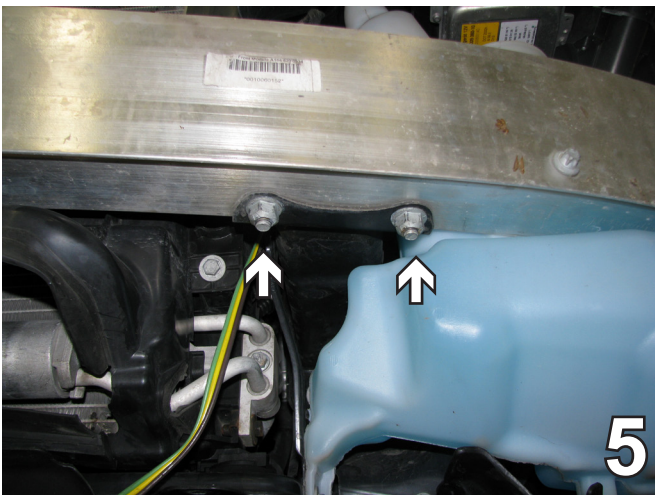
BX1992 2008 Mercedes Benz GL550 4Matic Installation Instructions



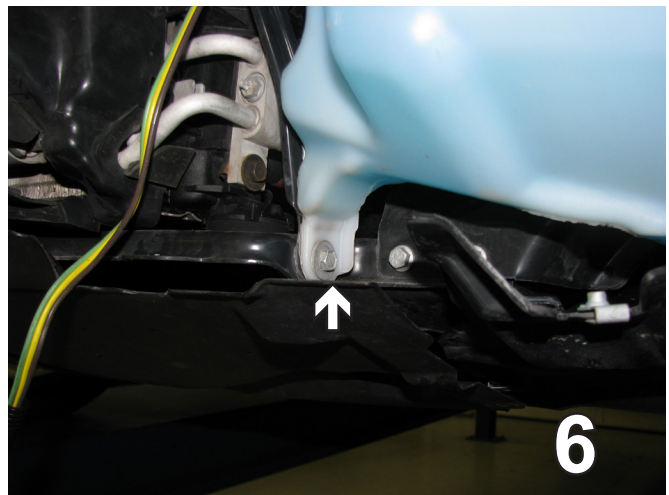
3. On the bottom of the fascia in the middle, remove two push pins. Set aside to be reinstalled later.



4. On the outside of the push pins, remove the two bolts. Pull the fascia forward from the corners to the front of the vehicle to unsnap. On top next to the headlights lift up over the tooth. Disconnect the fog lights on both sides. Set fascia and pins aside carefully to be reinstalled later.



4. Using a 16mm socket, remove the two bolts underneath the bumper. Set aside to be reinstalled later.



6. Using a 10mm socket, remove the bolt from the bottom of the washer reservoir. Set the bolt aside to be reinstalled later.

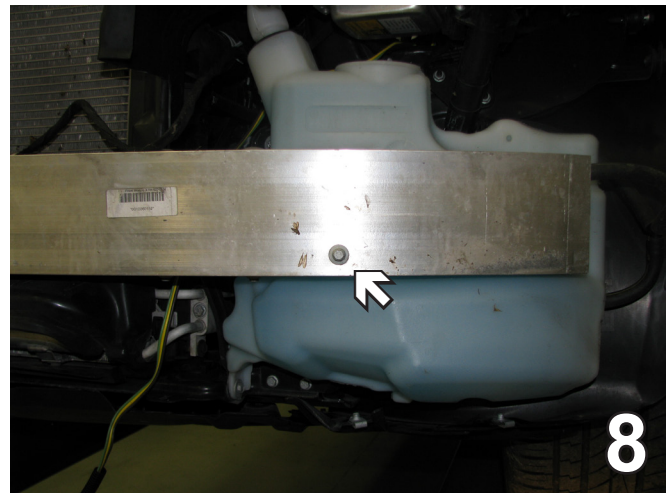
BX1992

2008 Mercedes Benz GL550 4Matic

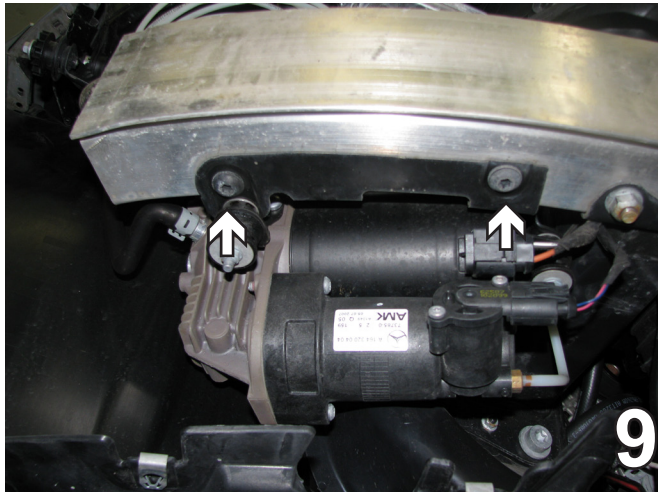
Installation Instructions



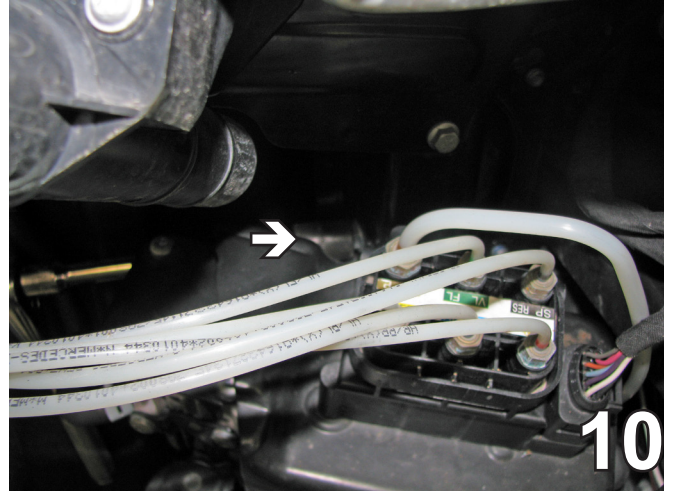
7. Using the T30 Torx, remove the bolt on the top of the washer reservoir. Set the bolt aside to be reinstalled later. On the back of the washer reservoir unplug the water lines and the electrical unit. Plug the water lines.



8. Using an E12 Torx, remove the inverted bolt from the front of the bumper. Set aside to be reinstalled later.



9. Remove the two bolts attaching the air compressor bracket on the passenger underside of the bumper using a T45 Torx. Set the bolts and bracket aside to be reinstalled later.



10. On the passenger side using a 13MM socket with extension, remove the nut from the air compressor. Carefully tie the compressor up out of the way and set the nut aside to be reinstalled later.

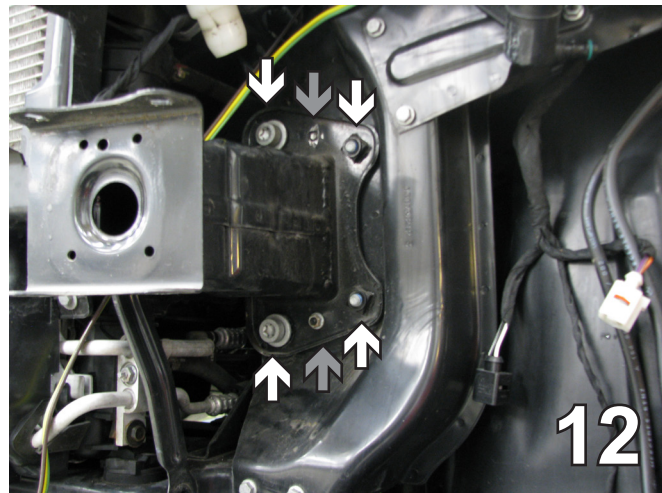
BX1992

2008 Mercedes Benz GL550 4Matic

Installation Instructions



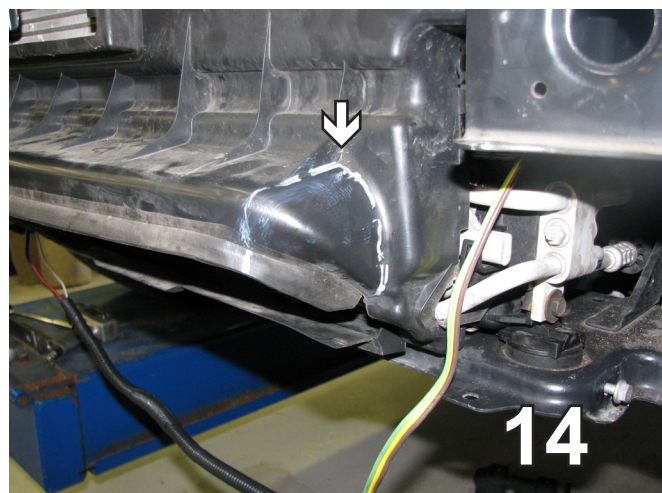
11. Using a 10MM socket, remove the two bolts from the back of both struts coming down from the hood latch. Set the bolts and the bumper aside to be reinstalled later.



12. Using a T55 Torx remove the four bolts from the top and bottom of the frame extension (white arrows). The two on the outside must be removed from the back side. Using a 10MM socket remove the bolts in the middle, top and bottom (gray arrows). Do this on both sides. Set the bolts aside to be reinstalled later.



13. On the back side of the fascia, cut straight across to the inside of the slot opening. Cut only the back piece not the front fascia, Do this on both sides.

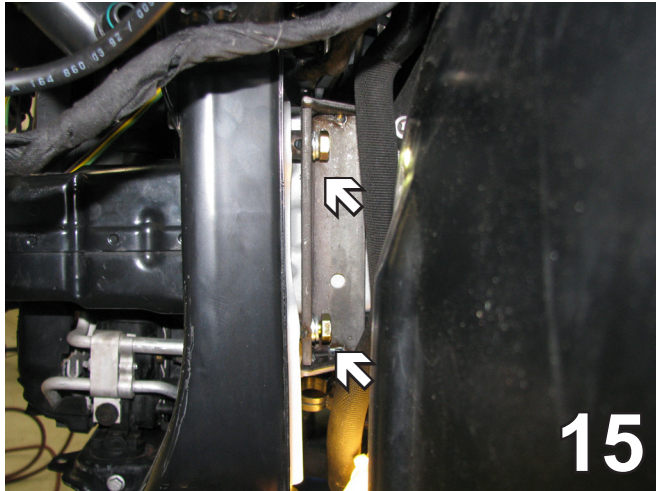


14. After the bumper has been removed using a hack saw blade trim the corner of the plastic guard. Do this on both sides.

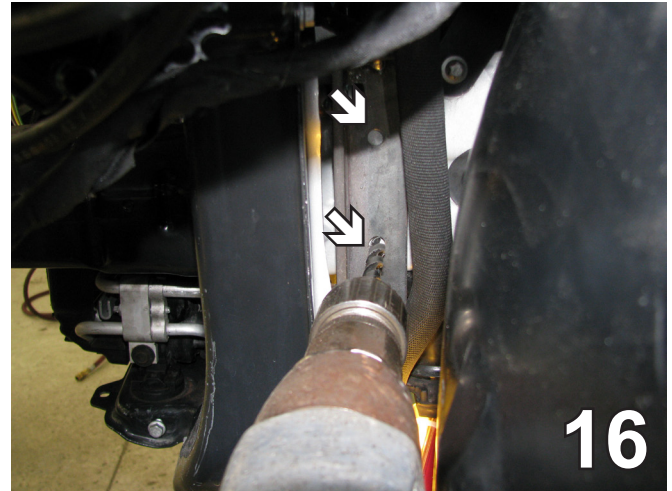
BX1992

2008 Mercedes Benz GL550 4Matic

Installation Instructions

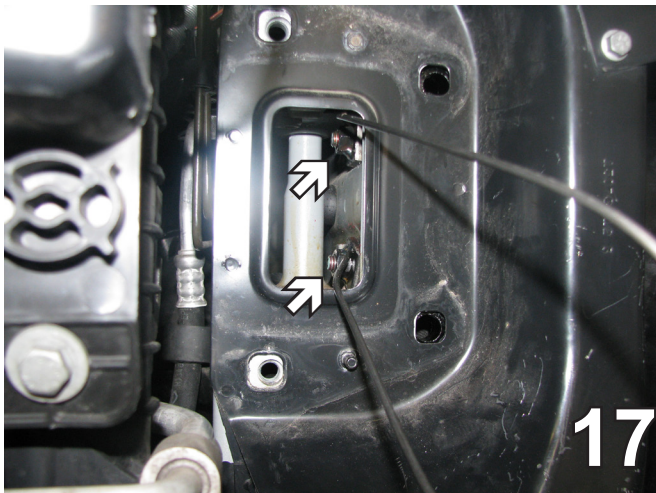


15. Using a T55 Torx, remove the two bolts behind where the washer reservoir had been. Put the bracket on with the bushings toward the front of the vehicle and line up with the holes on the back side of the frame. Insert a 10MM-1.5 x 40MM bolt with 10MM lock washer and 10MM flat washer. Do this on both sides.

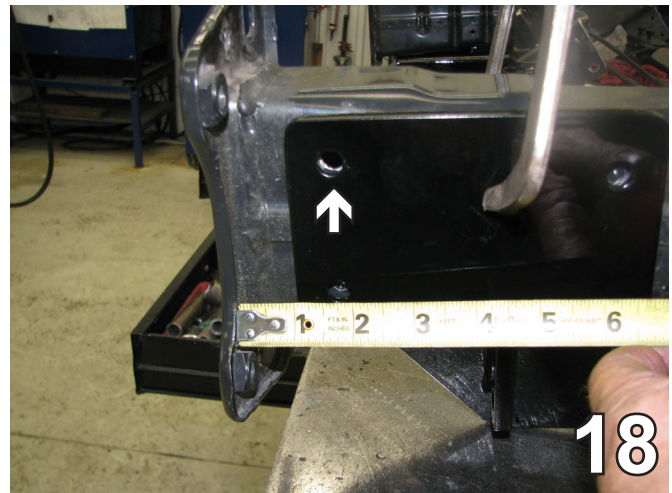


16. Using a 13/32" drill bit with the bracket as a template, drill two holes in the side of the frame rail. Do this on both sides.

When using power drills be aware of the dangers of torque and drill bit length.



17. Insert 3/8-16 x 1 1/2" bolts with 3/8 lock washers and 3/8 nut plates inserted inside the frame rail to align with drilled holes. Do this on both sides.

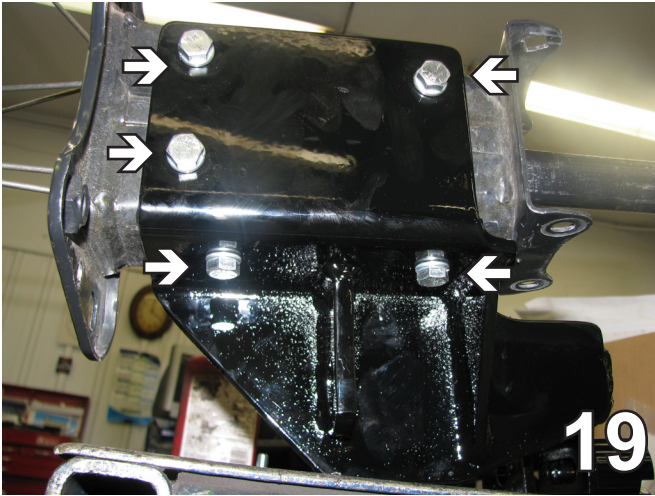


18. Set the frame extension provided aside with the base plate on the bench. Align the base plate 1" from the back of the frame rail, flush with the bottom and clamp. Do this on both sides. On the driver's side, using the base plate as a template drill the top back hole with a 13/32" drill bit and loosely bolt. Then drill the remaining two holes on the side and two on the bottom.

BX1992

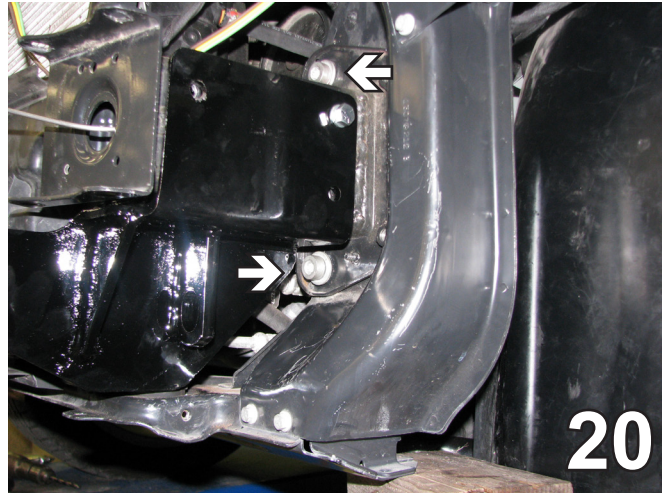
2008 Mercedes Benz GL550 4Matic

Installation Instructions



19. On the passenger side using the baseplate as a template with a 13/32" drill bit, drill the three holes on the side and two on the bottom. Insert into the holes 3/8-16 x 1 1/2" bolts with 3/8" lock washers, attach to a 3/8-16 nut plates on the inside. On the inside of the top two side holes insert 1/2" flat washers. Use Loctite on all bolts.

BE SURE TO USE LOCTITE® RED ON ALL BOLTS BEFORE TIGHTENING. TIGHTEN ALL BOLTS ACCORDING TO THE TORQUE CHART ON THE FRONT PAGE OF THESE INSTRUCTIONS OR ON PAGE 3 OF THE BASEPLATE TOWING GENERAL INSTRUCTIONS.



20. Cut the wire from the nut plate protruding out of the frame extension. Apply Loctite on the two T55 Torx bolts and hand tighten into the top and bottom of the frame extension to reinstall it. Do this on both sides. Realign the bumper to be sure it lines up with the two holes on the top of the frame extension on both sides. Apply Loctite to the two outside T55 bolts and tighten them first. Then tighten the two inside T55 bolts.

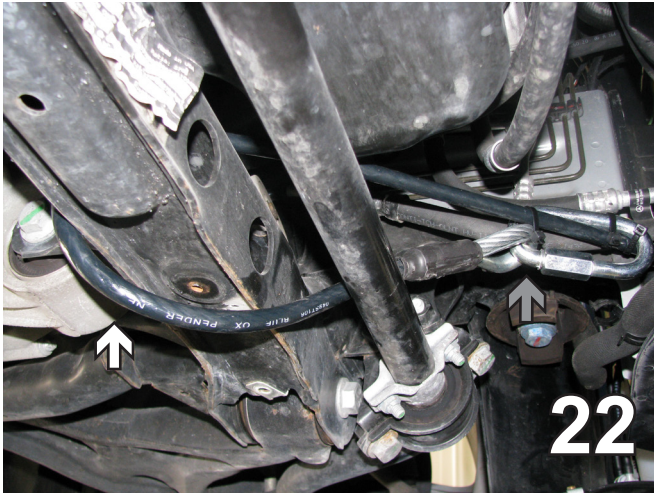


21. Apply Loctite and tighten the 3/8-16 x 1 1/2" bolts with 3/8" lock washers to the 3/8-16 nut plates. On the inside of the top two side holes insert 1/2" flat washers. Reinstall the bumper.

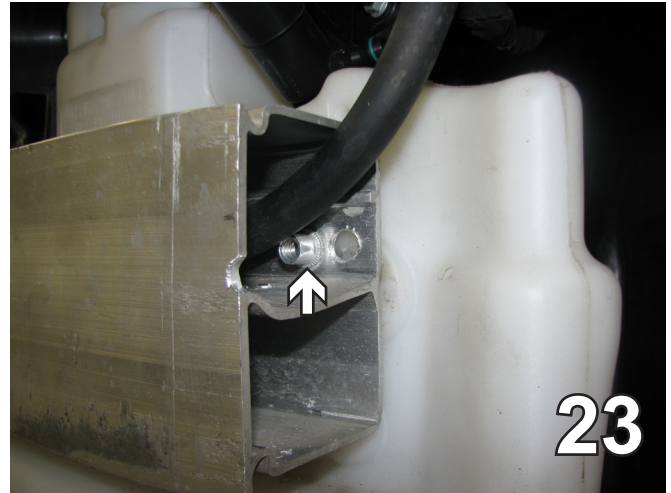
BX1992

2008 Mercedes Benz GL550 4Matic

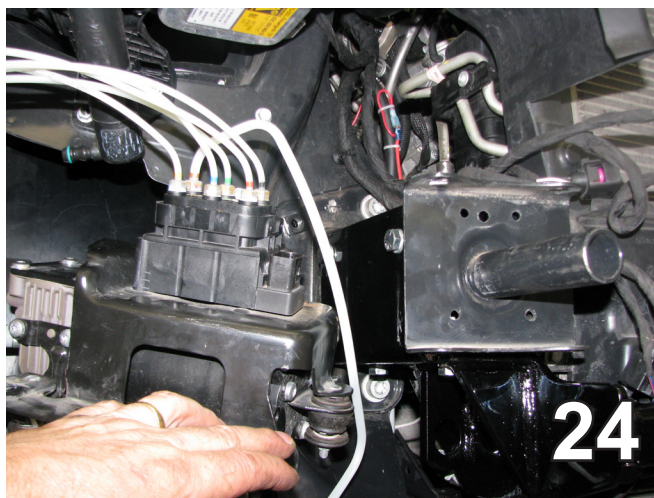
Installation Instructions



22. Attach the permanent baseplate safety cables to the provided convenience link on the baseplate (see grey arrow). The photo above shows the recommended installation of the cables to frame of vehicle (see white arrow). Additional options may interfere with suggested mounting; in this case secure the cables to a solid piece of the frame as described in the instructions included with the permanent baseplate safety cables. Be sure the safety cables do not rub against any hoses or moving parts. Do this to both sides of the vehicle.



23. Slide the washer reservoir up from the bottom underneath the bumper. Using a 13/32" drill bit, drill another hole between the original and the end of the bumper. Attach with a 3/8-16 x 1" bolt and a 3/8" whiz nut. On the bottom, insert a 1/2" tube, with a 1/4" flat washer and a 6MM-1 x 30MM bolt.



24. On the passenger side, reinstall the air compressor using the Torx bolts and the metric bolt. Reinstall the fascia, bolts and push pins.

BX1992

2008 Mercedes Benz GL550 4Matic

Installation Instructions

Install the tow bar and safety cables according to the instructions included in their packages.

Do not substitute other devices if the tow bar pin and clip are lost.

DEALER OR INSTALLER: BE CERTAIN THE USER RECEIVES THE INSTRUCTION SHEETS.

Be sure that **ALL** electrical connections are plugged in properly and functioning **BEFORE** installing the fascia.

DEALER or INSTALLER:
Be certain the user receives the instruction sheets for their products.

CUSTOMER SERVICE COMMITMENT



Blue Ox is committed to providing you with exceptional customer care throughout your lifetime with our products. Our team is here to assist you with any questions you may have regarding the performance of your product. Simply call 1-(402) 385-3051 and you can speak with our customer care team.

Additionally, please visit our website to see which rallies our Destination America team will be attending. For a nominal fee, our service technician will service your towing system to ensure it's in proper working condition. Also as a commitment to our customers, should you visit our factory you can stay at our full service Blue Ox campground at no charge along with enjoying a factory tour.



Again thank you for being our customer and for the confidence you have shown in the performance of our products. It is because of customers like you we enjoy the success we have today.

If the baseplate is in an accident, it must be replaced. **DO NOT** use it again! An accident can cause unseen damage and using it again could result in more damage or serious injury. **DO NOT** use the baseplate if it is damaged or missing parts.



© 2010 Blue Ox
One Mill Road, Industrial Park
Pender, Nebraska 68047
Phone: (402) 385-3051
Toll Free: (888) 425-5382
Fax: (402) 385-3360
www.blueox.com