



Strong As An Ox™

## BX2148 Installation Instructions 1998-2003 Ford Windstar

The fascia, headlights and front bracket need to be removed. Half inch holes need to be drilled. Slight trimming may be necessary to install the baseplate.

1. Open the hood and remove the five push rivets from the top of the plastic fascia. Looking down on the headlights, notice two black metal pieces with holes in them that hold each light assembly. These pieces are located on the back side of the light on each end. Pull the pieces out to release the headlights. Once the lights have been pulled out disconnect the wiring and set aside.
2. Remove the three phillips screws directly in front of the front tires, both sides. Also remove the three screws on the outside bottom of the fascia. On the front, bottom of the plastic fascia are five Phillips head screws behind the rivets which need to be removed.
3. Pull the plastic fender well molding back that is in front of the tires. Remove the two Hex nuts (11MM) that hold each side of the fascia to the fenders.
4. The fascia can now be removed. Notice the plastic from the bumper fascia that extends underneath the frame is exposed after the head lights are removed. Be sure when replacing the fascia that it slides underneath that frame piece.
5. The foam piece that extends across the front of metal bumper needs to be removed next. Remove the two outside nuts, one 11MM and one 8MM, and the two inside bolts on each side of the radiator (Some models may have rivets). Pull foam piece off and set aside. This piece was taken off so the two bolt plates can be placed in the metal bumper.

While the location and size of the holes in the baseplate were designed to allow for easy installation, it may be necessary to file a hole slightly.

6. Hold the baseplate up to the metal bumper, positioning the outside bent plates over the existing holes on the side of each frame (just behind the ripples). Hold the baseplate up so the middle braces are against the bottom of the metal bumper. Apply loctite and tighten the outside bolts according to the Torque Chart in the General Instruction Sheet.
7. Now drill the middle braces of the baseplate. Use the hardware provided (Items 2, 6, and 8) as shown in drawing on page 2. Use Loctite on each bolt and tighten. NOTE: On some models there will be a space between the middle braces and the bottom of the bumper. Use the 1/2" flat washers as spacers for this situation.
8. Reinstall foam to metal bumper with plastic rivets. Hold the fascia up to its original location and mark areas that need to be trimmed. Use the Pine Tree Clips (Item 10) in place of the plastic pins removed in Step 1 and reinstall fascia.

9. Install the tow bar and safety cables according to the instructions included in their packages. Do not substitute other devices if the tow bar pin and clip are lost.
10. **DEALER OR INSTALLER: BE CERTAIN THE USER RECEIVES THE INSTRUCTION SHEET.**

## Tools Required

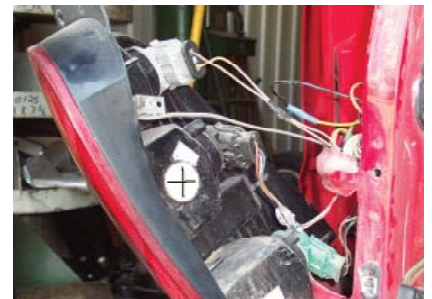
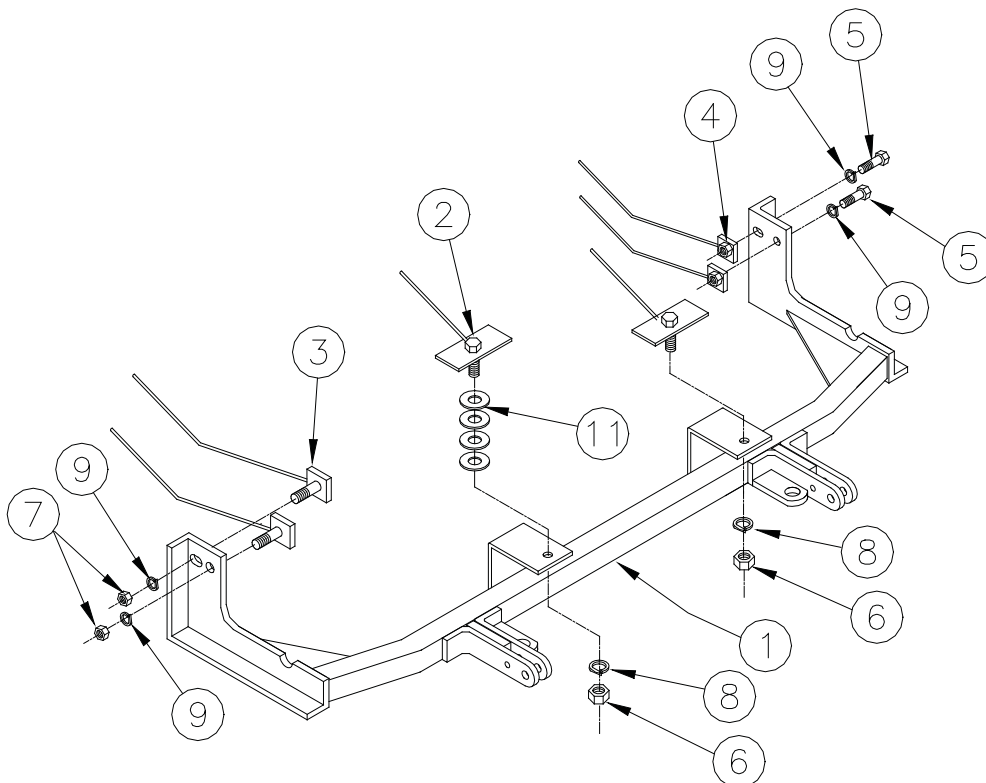
11MM Socket  
17/32" Drill Bit  
Loctite

Utility Knife  
Drill  
Plastic Rivet Gun

3/4" Socket  
18MM Socket  
Phillips Screwdriver (Short)

## Parts List

Ref. No.	Qty.	Part No.	Description
1	1	61-5382	Baseplate, BX2148
2	2	61-5267	1/2" Bolt Plate with Wire, Large
3	2	61-5383	3/8" Bolt Plate with Wire, Small
4	2	61-5208	3/8" Nut Plate with Wire, Small
5	2	201-0368	3/8"-16 x 1 1/4 Hex Bolt. Grade 8
6	2	202-0005	1/2"-13 Hex Nut
7	2	202-0003	3/8"-16 Hex Nut
8	2	203-0012	1/2 Lock Washer
9	2	203-0010	3/8" Lock Washer
10	8	290-0331	Pine tree clips (Not Shown)
11	8	203-0005	1/2 Flat, Washer, ZP (if needed)
12	4	229-0536	6.3MM Plastic Rivet (Not Shown)
	2	226-0046	Baseplate Safety Cable, 36" CL III (Not Shown)
	4	229-0359	Quicklink, 3/8, ZP (Not Shown)



Location for the BX8869 on the driver's side.