



**BX2153 Installation Instructions
2000-07 Ford Taurus (Not High Output)**

Serial No.

The front bumper fascia and headlights are removed for baseplate installation. Holes need to be drilled.
DEALER OR INSTALLER: BE CERTAIN THE USER RECEIVES THE INSTRUCTION SHEET.



Figure 1

1. Open hood and remove push pins from the top of the bumper fascia and center grill. Figure 1.

2. Remove the two pins holding each headlight assembly. Figure 2.



Figure 2

3. Remove the small Hex head screw holding the inside of the head light assemblies. Figure 3. Pull headlights out, disconnect wiring and set aside.

4. Remove the headlights, and remove the two Hex bolts behind them. Figure 4.



Figure 3

5. Remove the lower push pins and screws holding the bottom of the fascia and the plastic forward of the tires in the fender well. Pull molding out and remove the Hex screw connecting the fenders and fascia. Figure 5. Pull fascia from vehicle.

6. Place baseplate up to the frame behind the bumper. Passenger side first, being careful of the hoses below bumper, mark all holes and drill 3/8" holes. Figure 6 and 7.



Figure 4

7. Insert the wire nut plates through the slotted hole on the side of the frame. Figure 8. Position wire nut plates to each hole, apply Loctite to the 3/8" bolts with lock washer and thread into nut plates. Once the bolts have all been started, tighten according to chart in the General instruction sheet.

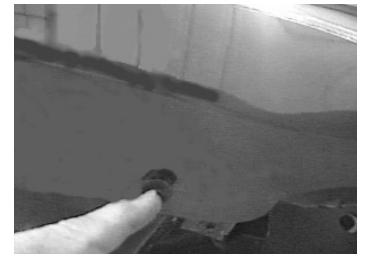


Figure 5

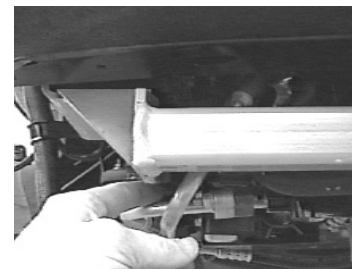


Figure 6

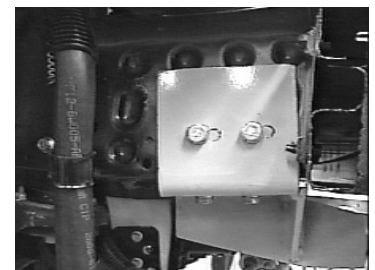


Figure 7



Figure 8

Automatic



Figure 9

- Replace bumper fascia and headlights. The attachment tabs will fit through the grill without having to be trimmed. Figure 9.

Tools Required

- | | | | |
|-----------------------|--------------|--------------|----------------|
| 12MM Wrench | 9/16" Wrench | Loctite Blue | 3/8" Drill Bit |
| 14MM Wrench | 8MM Wrench | 7/16" Wrench | 7/32" Socket |
| Phillips Screw Driver | | | |

Parts List

Ref. No.	Qty.	Part No.	Description
1	1	61-5468	Weldment, Base Plate, BX2153
2	8	201-0440	3/8-16 x 1 1/2 Hex Bolt Grd. 5 ZP
3	8	203-0010	3/8 Lock Washer, ZP
4	8	61-5208	3/8 Nut Plate 1/4 x 1 x 1 With 14 Inch Wire
5	2	201-0979	#12-14 x 1" Self Drilling Screw, ZP
6	2	202-0047	#10-32 Hex Nut
7	2	203-0054	#10 Lock Washer
8	2	201-0192	#10-32 x 1/2 Solt, RD. Screw
9	2	101-5822	Adapter, 4 Way Connector
	2	226-0046	Baseplate Safety Cable, 36" CL III (Not Shown)
	4	229-0359	Quicklink, 3/8, ZP (Not Shown)

