



Strong As An Ox™

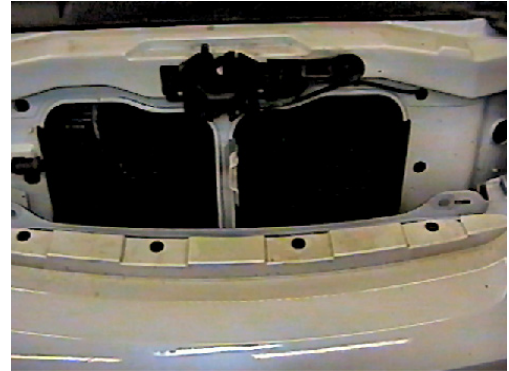
BX2174 Installation Instructions 2003 - 04 Lincoln Aviator

Serial No.

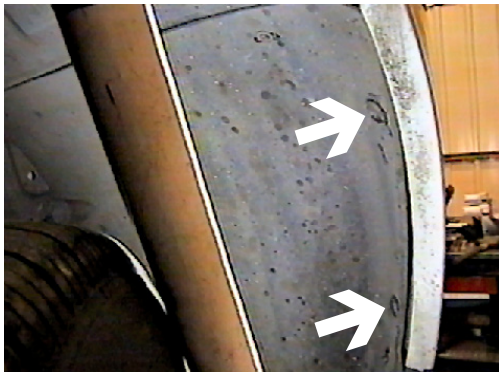
The front fascia and metal bumper are removed for baseplate installation. Drilling is required. Trimming of air dam and fascia is required. The BX8869 is available for the vehicle. Attachment Tabs are 18 inches center to center and a height of 21 1/2 inches. **Some models may have tow hooks. Tow hooks will be removed and not reinstalled.**



1. Remove the black plastic cover between the head lights, pull cover forward to release the snaps and set aside.



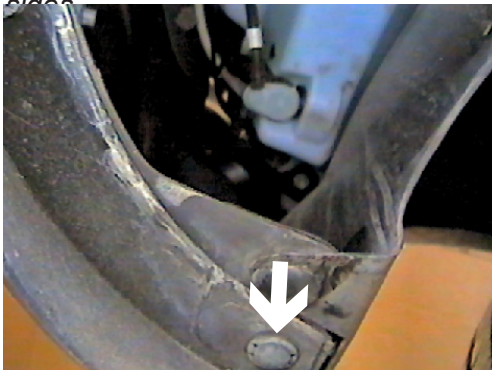
2. Remove the four push pins from the top edge of fascia, between head lights.



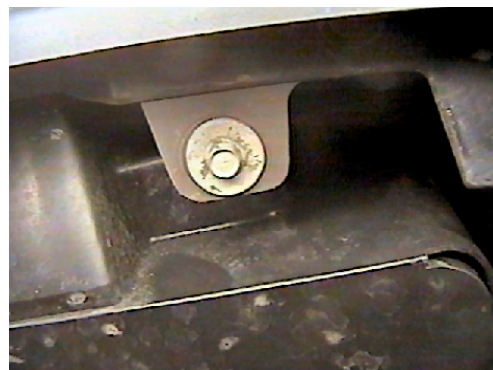
3. Just forward of front tires on wheel well are two christmas tree push pins to remove, both sides.



4. Pull wheel well cover back in front of tire and remove one metric bolt from corner of fascia with the 10MM socket, both sides.



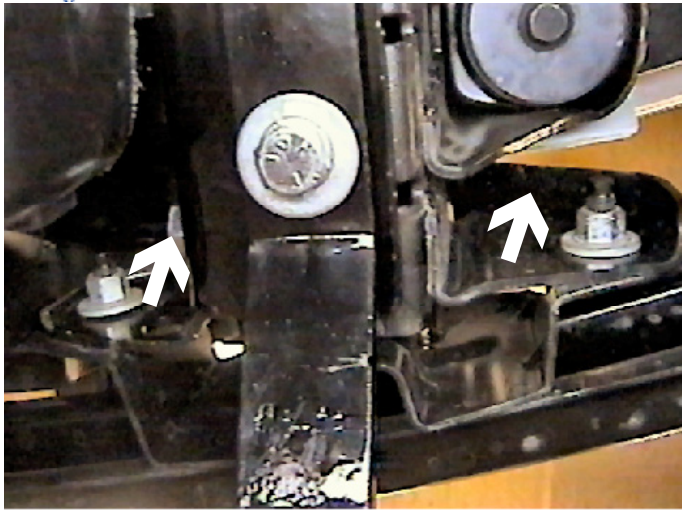
5. Remove one push pin from lower corner of front fascia, both sides.



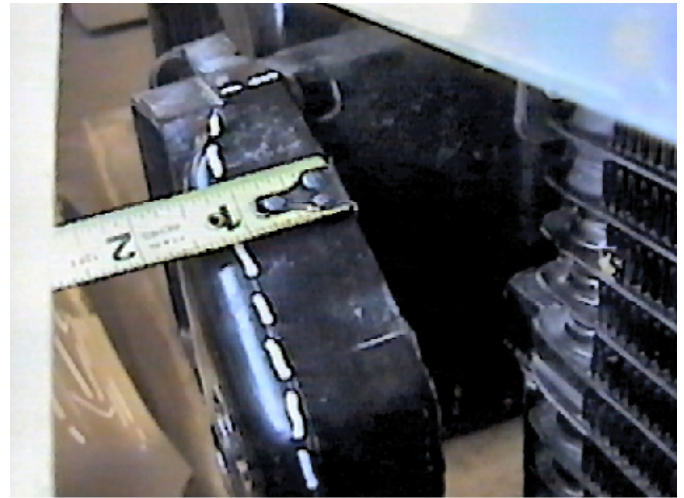
6. Remove two metric bolts from lower edge of fascia with the 10MM socket. Pull fascia forward and set aside.



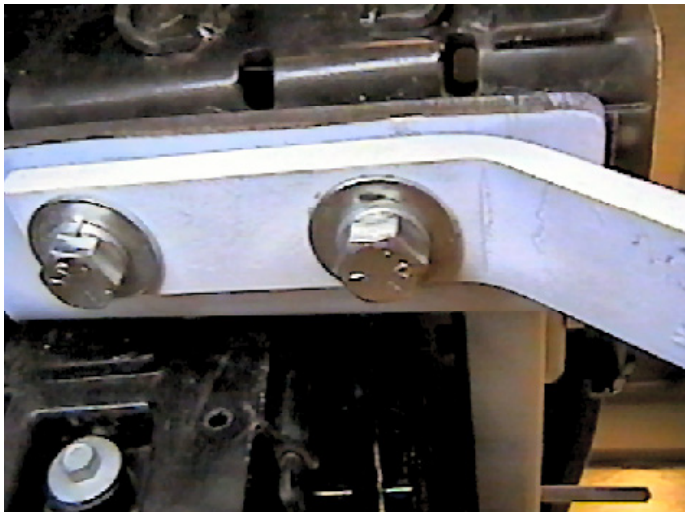
Strong As An Ox™



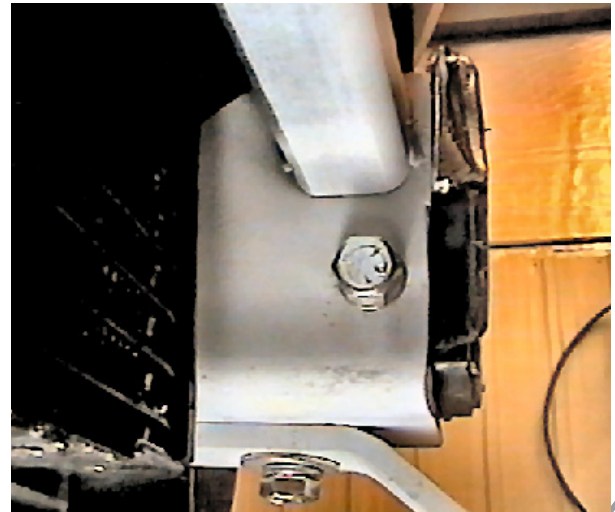
7. Using the 15MM socket, remove the two metric bolt from the back side of bumper bracket, both sides and set metal bumper aside.



8. Using the reciprocating saw, remove 1 1/8" of the inside lip on the back side of bumper bracket (view of passenger's side bracket).



9. Hold baseplate and convenience links to align with existing holes on the bottom side of frame, both sides. Insert nut plates into frame end to align with these holes, insert 1/2" x 2 1/2" hex bolts, 1/2" flat and lock washers into aligned holes to nut plates and tighten, both sides. Use loctite on all bolts and tighten according to the Torque Chart in the General Instruction sheet. **Some models may have tow hooks. Tow hooks will be removed and not reinstalled.**



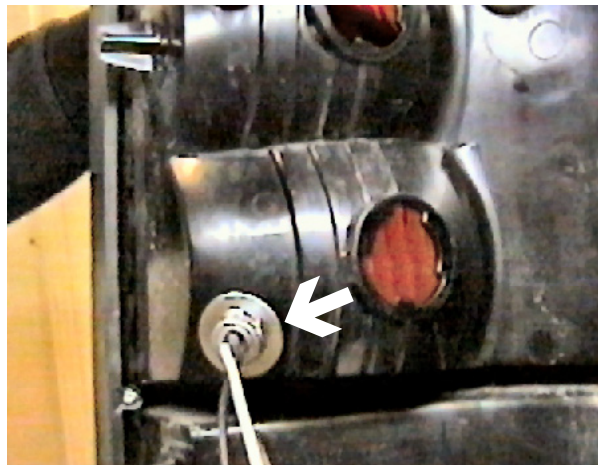
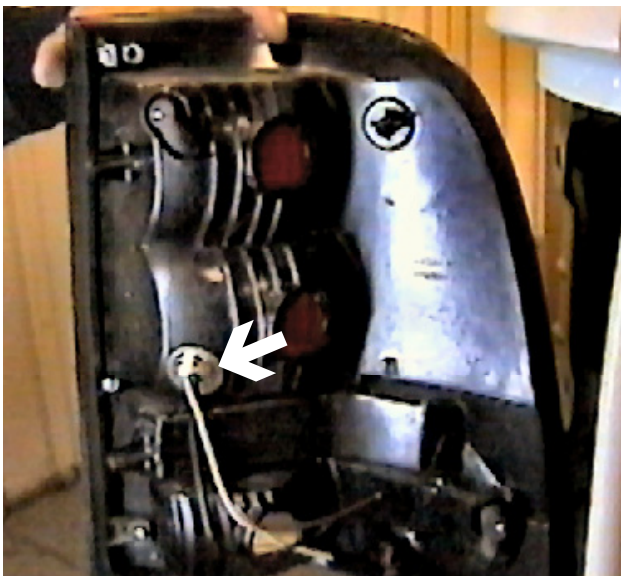
10. Using the baseplate as a template, drill hole into the frame with the 17/32" drill bit, both sides. Insert 1/2" nut plate into frame end to align with drilled hole, insert 1/2" x 1 3/4" hex bolt and lock washer into drilled hole and tighten. Be sure and use loctite on all bolts. Tighten all bolts according to Torque Chart in the General Instruction sheet.



Strong As An Ox™



11. Models that do not have tow hooks will cutting of the openings on lower fascia. Cut lower part of opening with the utility knife. Reinstall fascia. **Be sure all electrical components are plugged in properly.**
12. The dimensional variations between otherwise identical cars can be considerable. While the location and size of the holes in the baseplate were designed to allow for easy installation, it may be necessary to file a hole slightly to allow a bolt to clear.
13. Install the tow bar and safety cables according to the instructions included in their packages.
14. Do **not** substitute other devices if the tow bar pin and clip are lost.
15. **DEALER OR INSTALLER: BE CERTAIN THE USER RECEIVES THE INSTRUCTION SHEET.**



*Location for the Bx8869 on driver's side tail light assembly.
(Right photo is a closer view of driver's side.)*



Tools Required

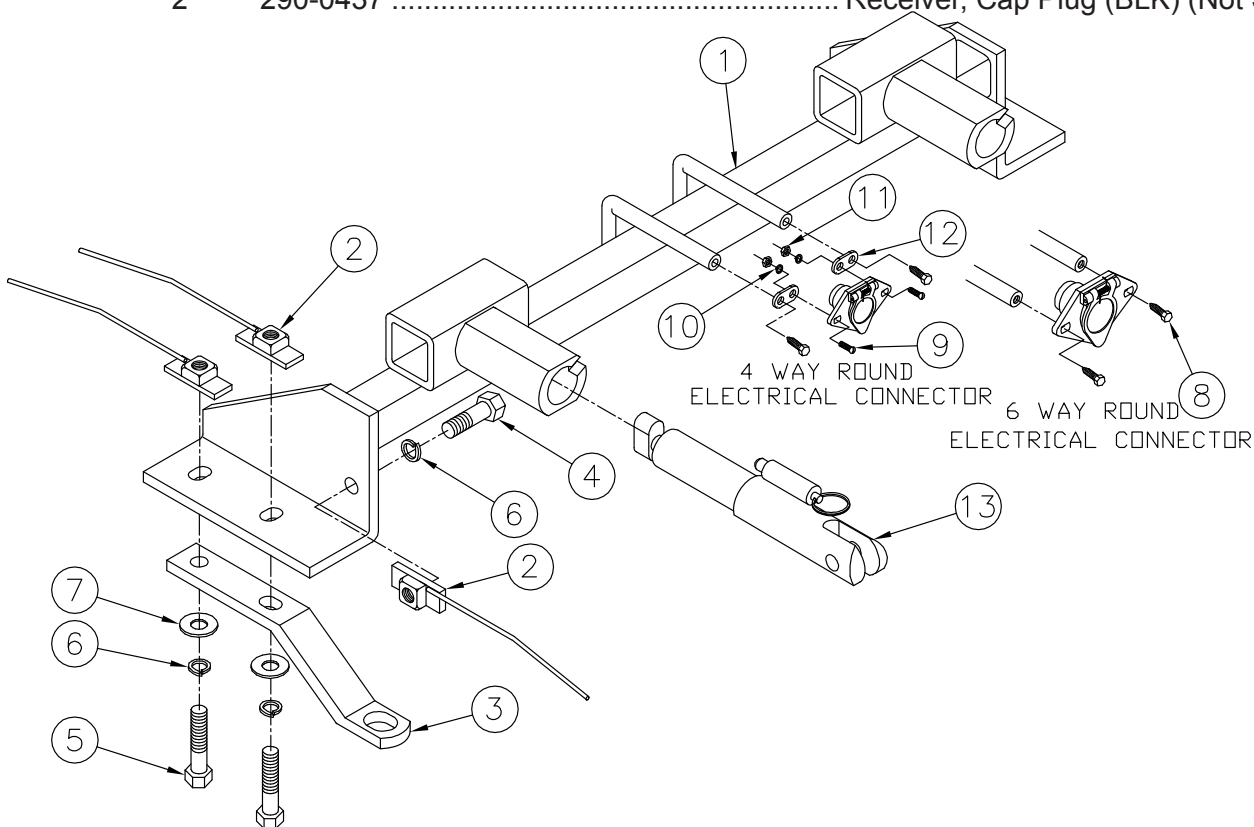
10MM Socket
15MM Socket
Reciprocating Saw

3/4" Socket
Loctite

Utility Knife
17/32" Drill Bit

Parts List

Ref. No.	Qty.	Part No.	Description
1	1	61-6005	Weldment, Base Plate, BX2174
2	6	61-3799	Weldment 1/2" Nut Plate, with 10" Wire
3	2	102-6526	Convenience Link, 10 inch (BD)
4	2	201-0068	1/2-13 x 1 3/4" Bolt, Grd. 5, ZP
5	4	201-0153	1/2-13 x 2 1/2" Bolt, Grd. 5, ZP
6	4	203-0005	1/2" Flat Washer, ZP
7	6	203-0012	1/2" Lock Washer, ZP
8	2	201-0979	#12-14 x 1" Self Drilling Screw, ZP
9	2	202-0047	#10-32 Hex Nut
10	2	203-0054	#10 Lock Washer
11	2	201-0192	#10-32 x 1/2 Slot, Rd. Hd. Screw
12	2	101-5822	Adapter, 4 Way Connector
13	2	62-3469	Attachment, Assembly, SF/ LB (R)
	2	226-0046	Baseplate Safety Cable, 36" CL III (Not Shown)
	2	229-0359	Quicklink, 3/8, ZP (Not Shown)
	2	290-0437	Receiver, Cap Plug (BLK) (Not Shown)



IMPORTANT: Use only genuine factory replacement parts on your Base Plate. Do not substitute homemade or nontypical parts. If a bolt is lost or in need of replacement, for your safety and the preservation of your Base Plate, be sure to use a replacement bolt of the same grade (Usually Grade 5, refer to parts list). Repair parts may be ordered through your nearest **Blue Ox** dealer or distributor.