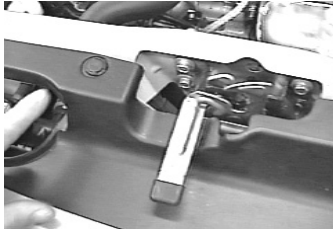




**Installation Instructions BX2222
Honda Civic EX 2001-03**

Serial No.

The front bumper and headlights are removed for installation. The front push pins from the lower plastic rock guard are temporarily removed. Holes need to be drilled. The attachment tabs are 24 inches center to center.



1. Open the hood and remove the push pins from the top of the bumper fascia.



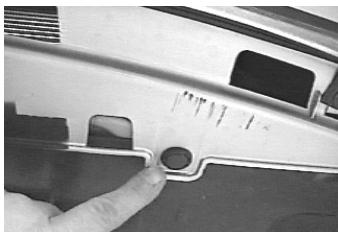
5. Pull out on the bumper fascia to release. It is snapped under the headlights also. Set fascia aside.



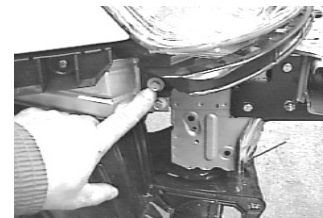
2. Remove all Hex bolts fastening the bumper fascia to the fenders, forward of the front tires.



6. Remove the hex bolts holding the headlight assemblies.



3. Remove the push pins from the bottom of the bumper fascia.



7. There are bolts located at the side and front also. Set lights aside.

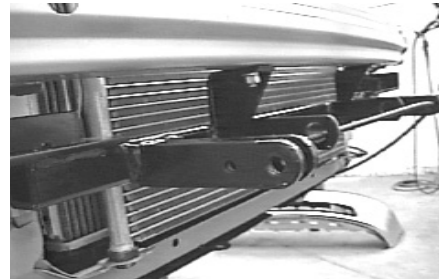
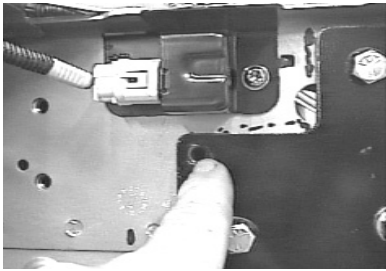


4. Remove the push pins from the bottom of the bumper fascia.



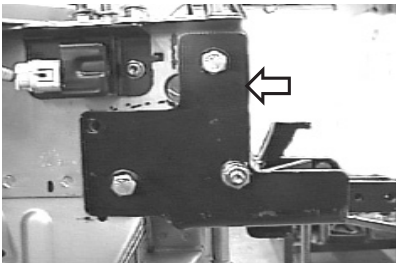
8. Remove the hex bolts from the top and bottom of the main bumper and set aside. It will be replaced once the baseplate is installed.

Automatic



9. Place the baseplate on the outside of the frame so the rear hole on passenger side of baseplate aligns with an existing hole. Insert 3/8" bolts to help hold in place.

12. Bolt the bumper back into place and drill holes in the bottom of the bumper using baseplate as a template.

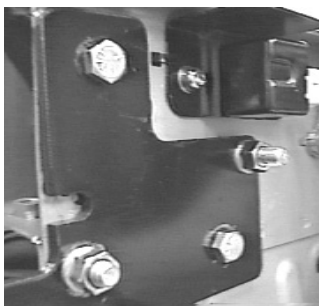


10. Use a Vise Grip and clamp both sides of the baseplate to the frame. The front of the baseplate should be flush with the front of the frame.

13. Insert washers and nuts from the back side of the bumper opening. Tighten hardware.

14. Replace the bumper fascia and refasten any electrical connections which were disconnected during installation.

15. DEALER OR INSTALLER: BE CERTAIN THE USER RECEIVES THE INSTRUCTION SHEET.



11. Drill holes (both sides) using the baseplate as a template. Use hardware as shown in drawing on last page and tighten according to the chart in the General Instruction Sheet. Use Loctite with each bolt.

Tools Required

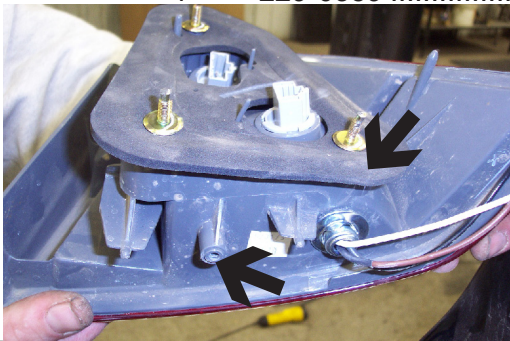
8mm Wrench
12mm Wrench
13mm Wrench
9/16" Wrench

3/8" Drill Bit
Vise Grips
Loctite Red

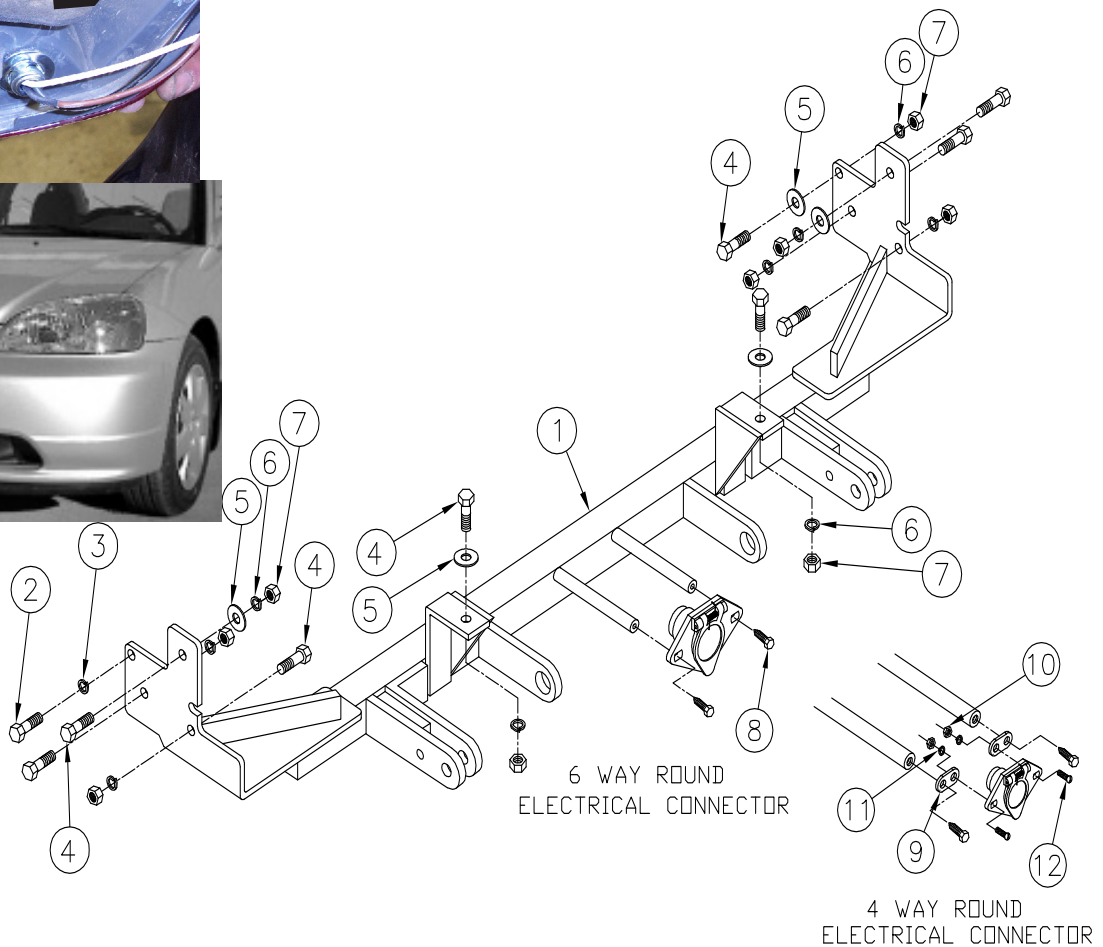


Parts List

Ref. No.	Qty.	Part No.	Description
1	1	61-5533	Weldment, Base Plate, BX2222
2	1	201-0592	12mm-1.5 x 30mm Bolt Hex Grd 8.8, ZP
3	1	203-0105	12mm Lock Washer, ZP
4	9	201-0368	3/8-16 x 1 1/4 Bolt Hex Grd 5, ZP
5	3	203-0003	3/8 Flat Washer, ZP
6	9	203-0010	3/8 Lock Washer, ZP
7	9	202-0003	3/8-16 Hex Nut, ZP
8	2	201-0979	#12-14 x 1" Self Drilling Screw, ZP
9	2	101-5822	Adapter, 4 Way Connector
10	2	202-0047	#10-32 Hex Nut
11	2	203-0054	#10 Lock Washer
12	2	201-0192	#10-32 x 1/2 Slot, RD. HD. Screw
	2	226-0046	Baseplate Safety Cable, 36" CL III (Not Shown)
	4	229-0359	Quicklink, 3/8, ZP (Not Shown)



Location on the driver's side, for the BX8869. Note bolt and pin location on the bottom of assembly that is under rear fascia(2001 - 2003).



Automatic