



BX2232

2002-04 Honda CR-V
 2003-11 Honda Element (Includes SC)
 Installation Instructions

Attachment Tab Height: 15"

Attachment Tab Width: 27"

Serial Number

Please read BOTH these Installation Instructions and the General Instructions prior to installing or operating this equipment.

- Blue Ox® towing products and accessories are intended to be installed by Blue Ox® Dealers who are familiar with our products and have the equipment and knowledge necessary to do "fit work". If needed, Blue Ox® Dealers can be found at www.blueox.com or by contacting our Customer Care Department at (402) 385-3051.
- Many Blue Ox® baseplates are designed to use existing holes and hardware to mount the baseplate to the towed vehicle. Even though bolts are there, do not assume they are adequate for baseplate mounting. Always use the hardware supplied in the hardware kit and existing hardware as specified in the installation instructions.

Bolt Torque Specifications		
Torque in Foot-Pounds for Inch Bolts		
Bolt Size	Grade 5	Grade 8
1/4"	10	14
5/16"	19	29
3/8"	33	47
7/16"	54	78
1/2"	78	119
5/8"	154	230
3/4"	257	380



Honda CR-V



Honda Element SC

Bolt Torque Specifications		
Torque in Foot-Pounds for Metric Bolts		
Bolt Size	Grade 8.8	Grade 10.9
6MM	6	8
8MM	16	22
10MM	31	40
12MM	54	70
14MM	89	117
16MM	161	230
18MM	222	318

If the front of your vehicle looks different than this, please contact us at (402)385-3051.

WARNING

Failure to read and follow these instructions could result in separation of the towed vehicle from the tow bar, causing property damage, loss of towed vehicle, personal injury or death.

Reference your vehicle owner's manual for manufacturer's towing specifications.

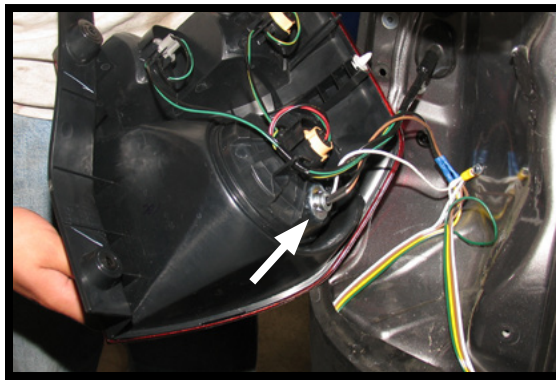
BX2232
2002-04 Honda CR-V
2003-11 Honda Element (Includes SC)
Installation Instructions

Instruction Notes: The fascia and bumper are removed and reinstalled for the baseplate installation. Some drilling and trimming is required.

Place all components that are removed on a flat, sturdy surface. All items will be reinstalled unless otherwise noted after the baseplate is installed.

The dimensional variations between otherwise identical vehicles can be considerable. While the baseplate was designed for easy installation, it may be necessary to tailor the baseplate slightly to compensate for vehicle manufacturer's tolerances.

The BX8869 Tail Light Wiring Kit is recommended for this vehicle.



Drill a hole according to the tail
light wiring kit instructions.

NOTICE

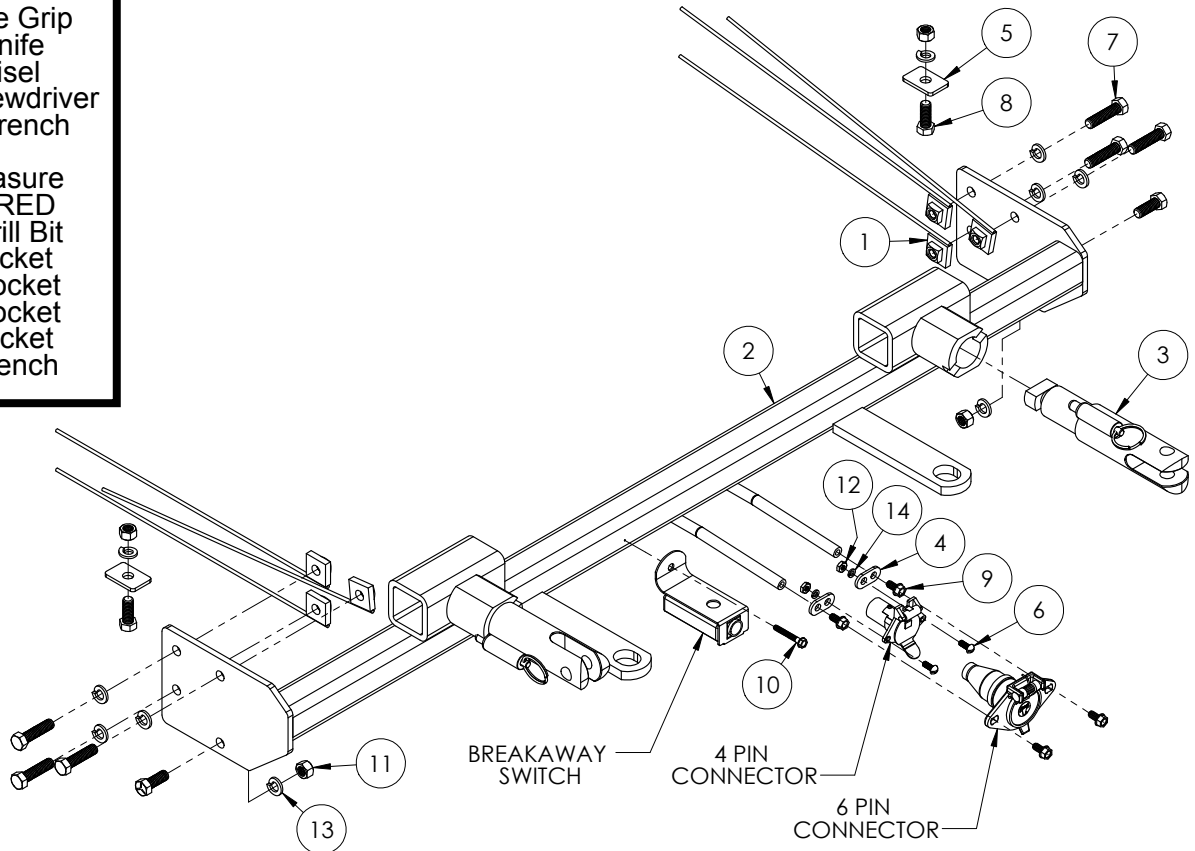
- Handling of some cosmetic parts when installing this product may require the use of protective covers, rags, specialty tools, etc. to prevent damage.
- When using power drills be aware of the dangers of torque and drill bit length.
- When using a reciprocating saw be aware of objects behind the cutting surface.
- Use a good quality paint to spray cut edges of frame to prevent rusting.
- Be sure that **ALL** electrical connections are plugged in and accessories are functioning properly before reinstalling the fascia.
- The baseplate is computer tested to your vehicle's GVWR, exceeding this weight will void the manufacturer's warranty.
- Be sure to use Loctite® Red on all bolts before tightening. Tighten all bolts according to the torque chart provided.
- Dealer or installer be certain the user receives these instruction sheets.
- If the baseplate is in an accident, it must be replaced. **DO NOT** use it again! An accident can cause unseen damage and using it again could result in more damage or serious injury. **DO NOT** use the baseplate if it is damaged or missing parts.

Only baseplates mfg after 7/1/14 will fit "SC" models

BX2232
2002-04 Honda CR-V
2003-11 Honda Element (Includes SC)
Installation Instructions

Tools Required

- Large Vise Grip
- Utility Knife
- Flat Chisel
- Phillips Screwdriver
- Torque Wrench
- Drill
- Tape Measure
- Loctite® RED
- 13/32" Drill Bit
- 8MM Socket
- 10MM Socket
- 12MM Socket
- 9/16" Socket
- 9/16" Wrench

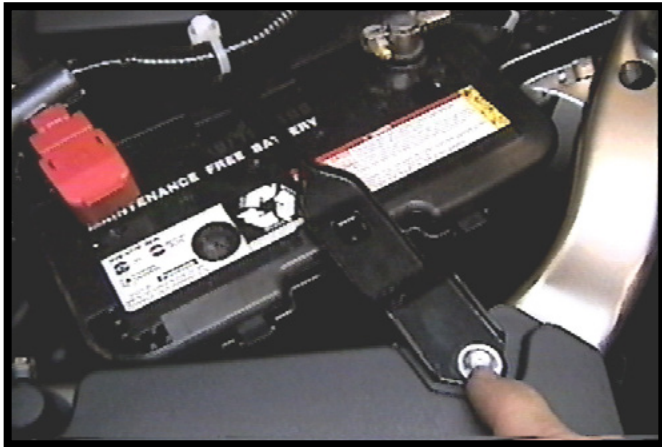


Item No.	Part No.	Description	Qty.
1.....	61-5208.....	3/8"-16 Nut Plate w/ 14" Wire	6
2.....	61-5939.....	BX2232 Baseplate.....	1
3.....	62-3468.....	Attachment Tab Assembly with Hole	2
4.....	101-5822.....	4 Way Connector Adapter	2
5.....	102-6473.....	Support Plate.....	2
6.....	201-0192.....	#10-32 1/2" Round Slotted Head Screw.....	2
7.....	201-0440.....	3/8"-16 x 1-1/2" Hex Head Bolt, Grade 5, ZP	6
8.....	201-0443.....	3/8"-16 x 1" Hex Head Bolt, Grade 5, ZP	4
9.....	201-0553.....	1/4"-20 x 1/2" Hex Wshd Bolt Type F TCS, ZP.....	2
10.....	201-0654.....	#10-16 x 1" Self Drilling Screw, ZP.....	1
11.....	202-0003.....	3/8"-16 Hex Nut, ZP.....	4
12.....	202-0047.....	#10-32 Hex Nut	2
13.....	203-0010.....	3/8" Lock Washer, ZP	10
14.....	203-0054.....	#10 Lock Washer, ZP	2
15.....	226-0046(not shown).....	Class III Safety Cables	2
16.....	229-0359(not shown).....	3/8" Quicklink, ZP	2
17.....	290-0437(not shown).....	Black Cap Plug Receiver.....	2

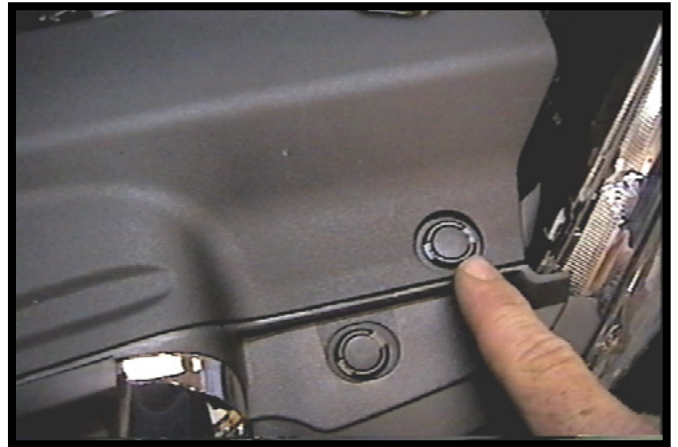
Important:

Use only genuine factory replacement parts on your baseplate. Do **NOT** substitute homemade or non-typical parts. If a bolt is lost or in need of replacement, for your safety and the preservation of your baseplate, be sure to use a replacement bolt of the same grade (In most cases it will be Grade 5, please reference the parts list above). Replacement parts may be ordered through your nearest Blue Ox® Dealer or Distributor. Failing to follow and/or altering these installation instructions in either installation or required equipment will void the manufacturer's warranty. Towing behind a non-motorized vehicle will void the warranty.

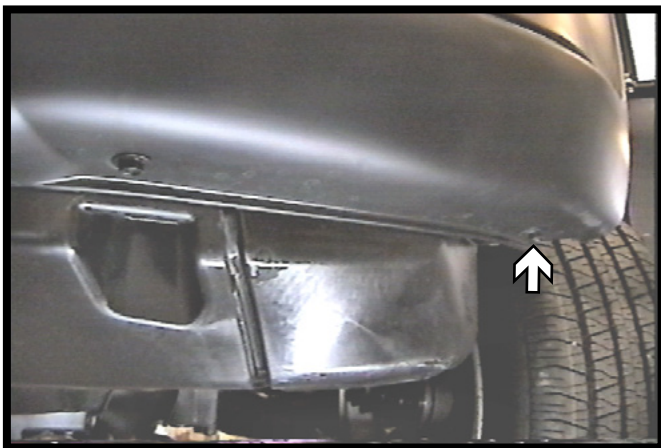
BX2232
2002-04 Honda CR-V
2003-11 Honda Element (Includes SC)
Installation Instructions
CR-V Fascia Removal



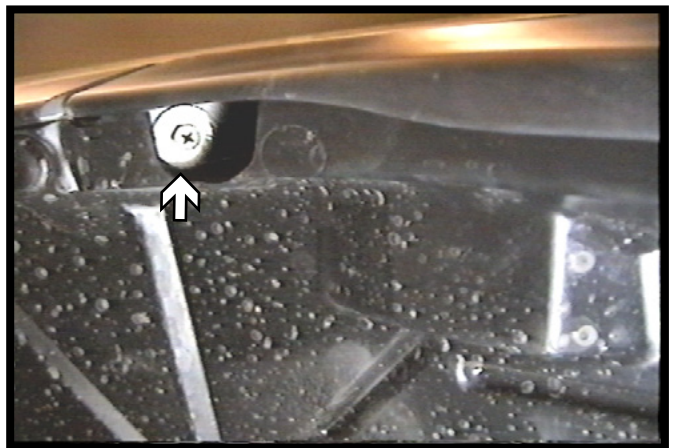
1. Using a 10MM socket, remove the metric bolt from the battery hold down strap.



2. Remove nine (9) push pins from the fascia cover. Set the cover aside.



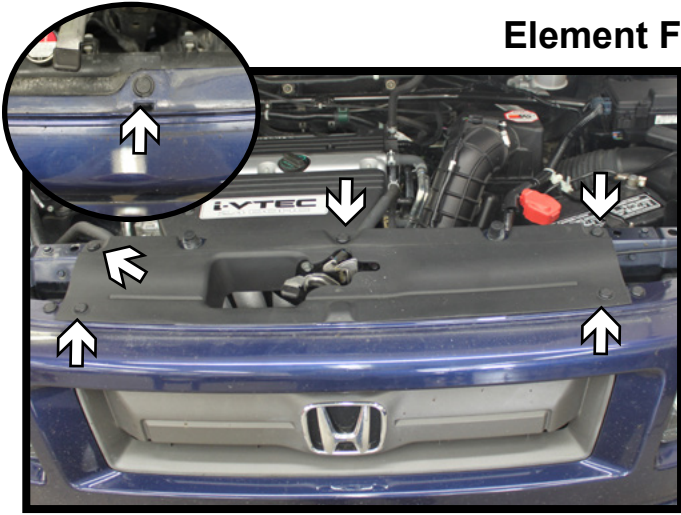
3. Using a 10MM socket, remove two (2) bolts from the bottom of edge of the fascia, just forward of the front tires. Remove two (2) push pins from the lower edge of the fascia. Do this to both sides of the vehicle.



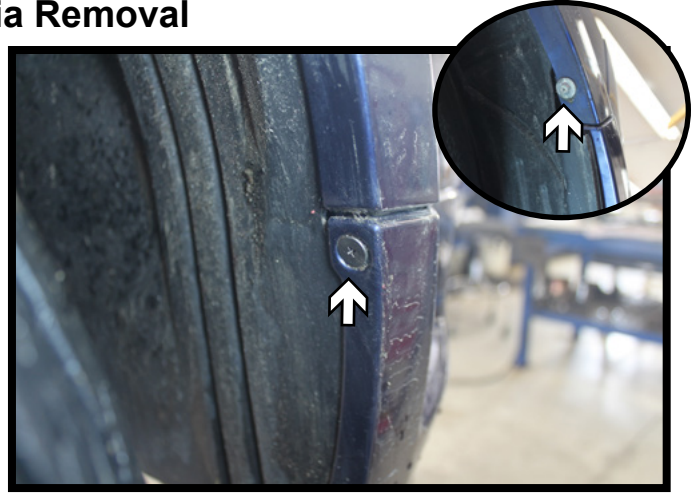
4. Using a 8MM socket, remove the bolt on the upper fascia corner. Do this to both sides of the vehicle. Pull the fascia forward and set carefully aside.

BX2232
2002-04 Honda CR-V
2003-11 Honda Element (Includes SC)
Installation Instructions

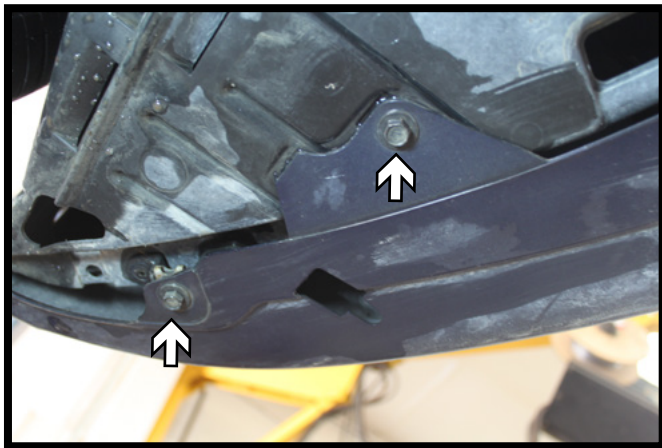
Element Fascia Removal



1. Remove the five (5) push pins from the fascia cover and set aside. Then remove the seven (7) push pins from the top edge of the fascia (inset).



2. Using a Phillips screwdriver, remove the screw from the lower edge of the wheel well. Continue up along the edge of the wheel well and remove the upper screw (inset). Do this on both sides of the vehicle.



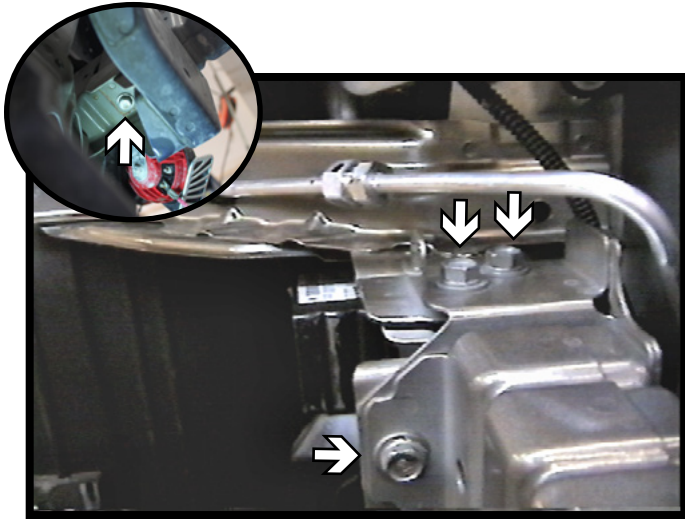
3. Using a 10MM socket, remove the four (4) screws from the corners of the fascia. There are two (2) on each side.



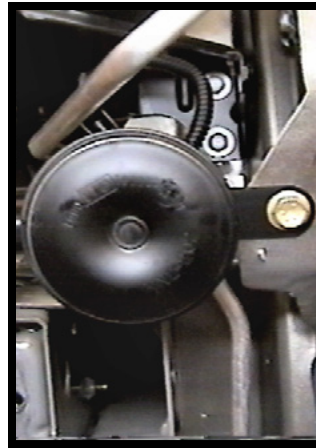
4. Remove the four (4) push pins from the underside of the fascia. There are two (2) in the center of the fascia and one (1) on either side of the center pins.

Remove the fascia from the vehicle, disconnecting any electrical connections and set aside.

BX2232
 2002-04 Honda CR-V
 2003-11 Honda Element (Includes SC)
 Installation Instructions

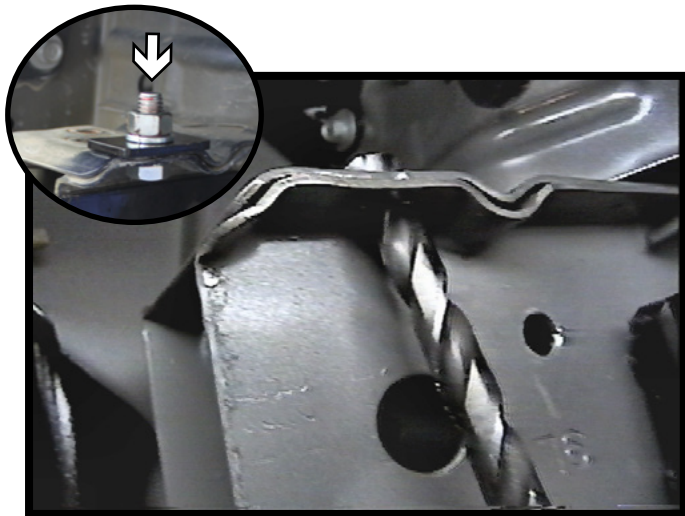


5. Using a 12MM socket, remove the four (4) bolts from the metal bumper. There are two (2) on top, one (1) on the side and one (1) underneath. Do this on both sides of the vehicle. Set the bumper aside, it will not be reinstalled for baseplate clearance.

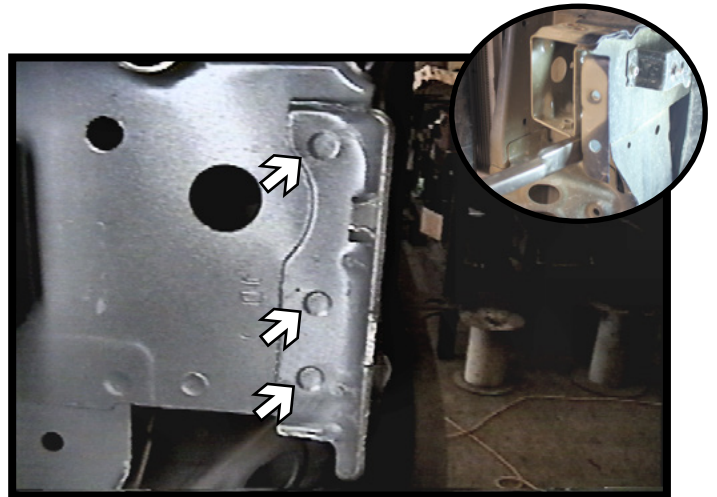


6. **Models with Horns on DS/PS:** Using a 13MM socket, loosen the bolt and turn the horn assembly outwards (left). Do this on both sides of the vehicle.

Models with Dual DS Horns: Relocate the lower horn to the upper horn position (right).

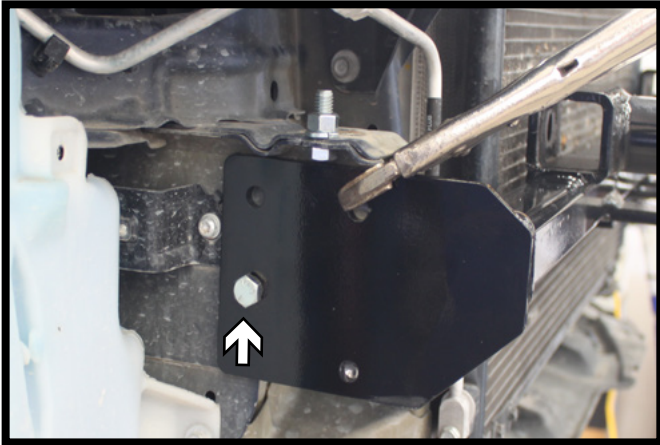


7. Using a 13/32" drill bit, drill a hole thru both frame layers as shown. Install a 3/8"-16 x 1" bolt from the underside thru the frame and install the support plate, a 3/8" lock washer and hex nut on the topside. Fully tighten the hardware. Do this on both sides of the vehicle.



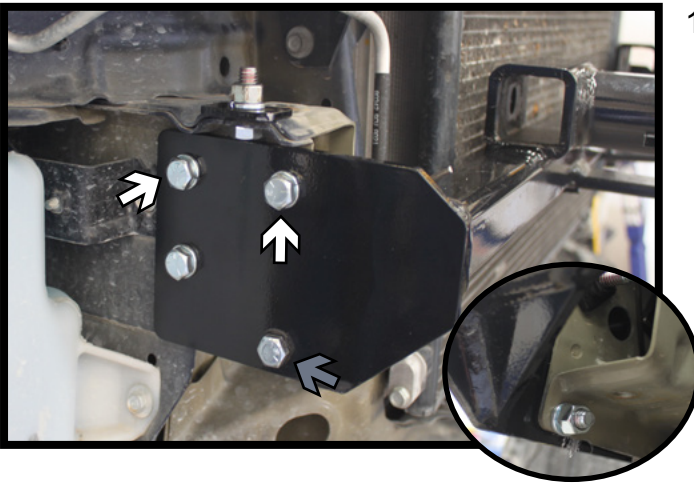
8. Using a 13/32" drill bit, drill the factory spot welds enough to release the flange from the frame. **DO NOT** drill thru the frame. Using a flat chisel separate the flange from the frame. Do this on both sides of the vehicle.

BX2232
2002-04 Honda CR-V
2003-11 Honda Element (Includes SC)
Installation Instructions

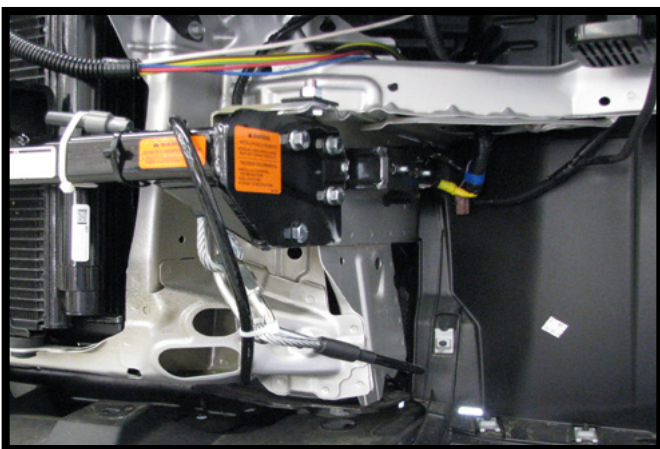


9. Position the baseplate onto the frame. Push the baseplate back to the sensor and approximately a 1/4" down from the frame flange. Level and securely clamp to the frame. Insure the tabs come thru the fascia properly.

Using a 13/32" drill bit, drill a hole thru the frame. Install a 3/8"-16 x 1-1/2" bolt and lock washer into the hole with a 3/8" nut plate on the inside of the frame. Fully tighten all hardware. Do this on both sides of the vehicle.



10. Using a 13/32" drill bit, drill the remaining holes thru the frame. Install 3/8"-16 x 1-1/2" bolts and lock washers into the top holes with a 3/8" nut plates on the inside of the frame. On the lower front hole install a 3/8"-16 x 1" bolt with a 3/8" lock washer and hex nut on the inside of the frame. Fully tighten all hardware. Do this on both sides of the vehicle.



11. Attach the permanent baseplate safety cables to the provided convenience link on the baseplate. The photo shows the recommended installation of the cables to frame of vehicle. Additional options may interfere with suggested mounting; in this case, secure the cables to a solid piece of the frame as described in the instructions included with the permanent baseplate safety cables. Be sure the safety cables do not rub against any hoses or moving parts. Do this on **BOTH** sides of the vehicle.

BX2232
2002-04 Honda CR-V
2003-11 Honda Element (Includes SC)
Installation Instructions



12. Reinstall the fascia and fascia cover.

Note: On SC models, the back side of the fascia may need to be trimmed by the tab sockets.

CUSTOMER SERVICE COMMITMENT

Blue Ox® is committed to providing you with exceptional customer care throughout your lifetime with our products. Our team is here to assist you with any questions you may have regarding the performance of your product. Simply call (402) 385-3051 and you can speak with our customer care team.

Additionally, please visit our website to see which rallies our Destination America team will be attending. For a nominal fee, our service technician will service your towing system to ensure it's in proper working condition. Also, as a commitment to our customers, should you visit our factory, you can stay at our full service Blue Ox® campground at no charge along with enjoying a factory tour.

Again, thank you for being our customer and for the confidence you have shown in the performance of our products. It is because of customers like you we enjoy the success we have today.

© 2014 Blue Ox
One Mill Road, Industrial Park
Pender, Nebraska 68047
Phone: (402) 385-3051
Fax: (402) 385-3360
www.blueox.com