

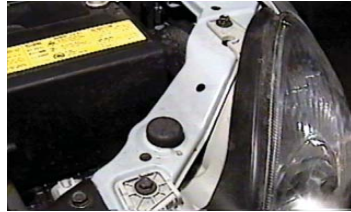


Strong As An Ox™

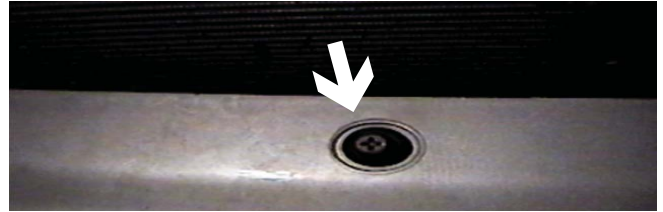
## BX2315 Installation Instructions 2003 Hyundai Sonata

Serial No.

Drilling is NOT necessary. Trimming of the fascia on some vehicles may be needed. The BX8869 is available for this vehicle. Attachment tabs are 18 1/2 inches center to center and a height of 13 1/2 inches. **Be sure to use loctite on all bolts before tightening. Tighten all bolts according to torque chart in general instruction sheet.**



1. Remove three 6mm bolts from each headlight. One on the back, two on the front.



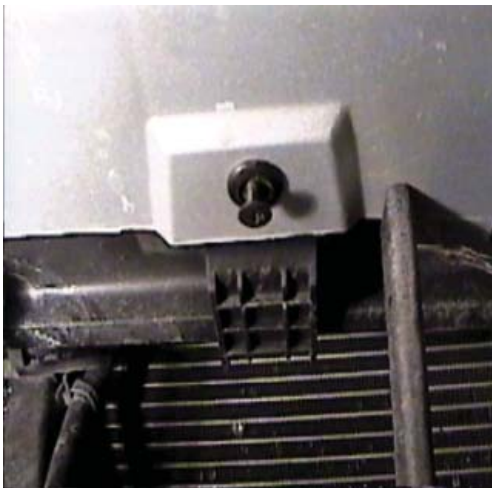
2. Remove three plastic Phillips screws on the top of the fascia, two in the front, and one by the passenger side headlight.



3. Remove two 6mm screws, one by each headlight.



4. Remove the third 6mm screw on the passenger's side of fascia.



5. Remove two plastic Phillips push pins underneath the license plate.



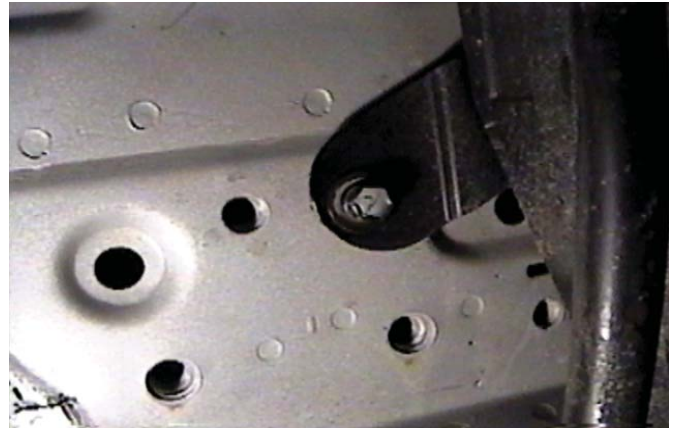
6. Remove two push pins on the driver's side underneath the car.



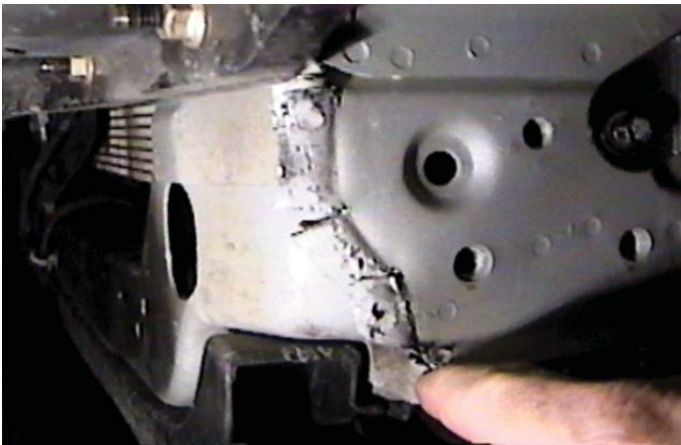
Strong As An Ox™



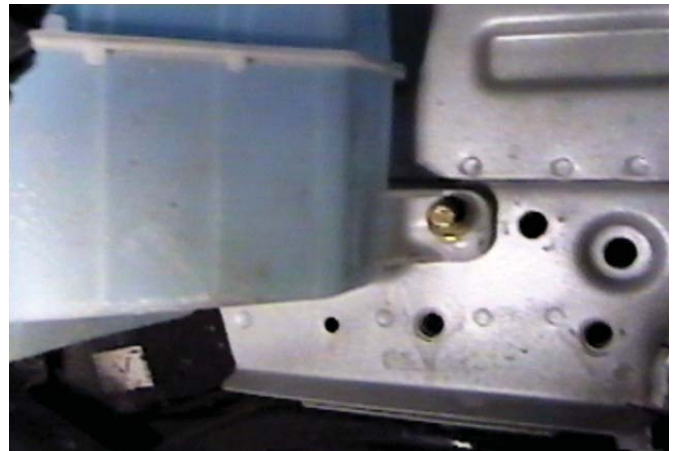
7. Remove the screws in the wheel well with a 8mm socket, one on each side, to remove the bumper.



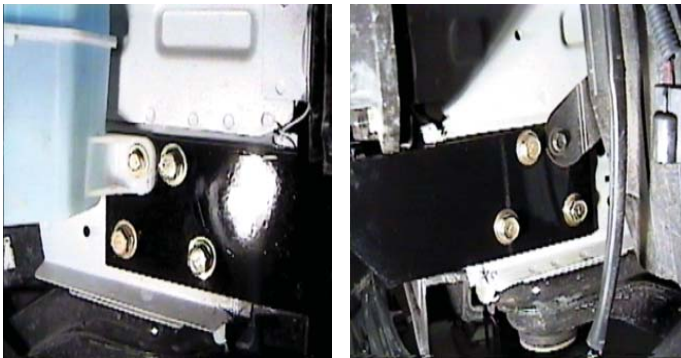
8. Remove the tow hooks with a 17mm socket. Remove the smaller bolt with a 10mm socket on the driver's side.



9. Cut the rib 4 times with a hacksaw and then bend over with a pliers as shown above.



10. On the passenger's side, do the same thing, remove the bolt fastening the washer fluid container with a 10mm socket and cut the rib and bend over as in step 9.



11. Bolt the baseplate to the frame with the six existing 10 mm bolts, and two 6mm bolts.



12. Install the fascia back onto the front of the car. (Note: Some cars may need trimming.)





Strong As An Ox™



13. *The BX8869 wiring kit will work with this vehicle. The designer above is pointing to where the taillight assembly will need to be drilled. Note: To drill at this spot, the outside wall will need to be drilled first with a 1" hole saw, then the location of the actual bulb can be drilled.*
14. *The dimensional variations between otherwise identical cars can be considerable. While the location and size of the holes in the baseplate were designed to allow for easy installation, it may be necessary to file a hole slightly to allow a bolt to clear.*
15. *Install the tow bar and safety cables according to the instructions included in their packages.*
16. *Do **not** substitute other devices if the tow bar pin and clip are lost.*
17. **DEALER OR INSTALLER: BE CERTAIN THE USER RECEIVES THE INSTRUCTION SHEET.**



Strong As An Ox™

## Tools Required

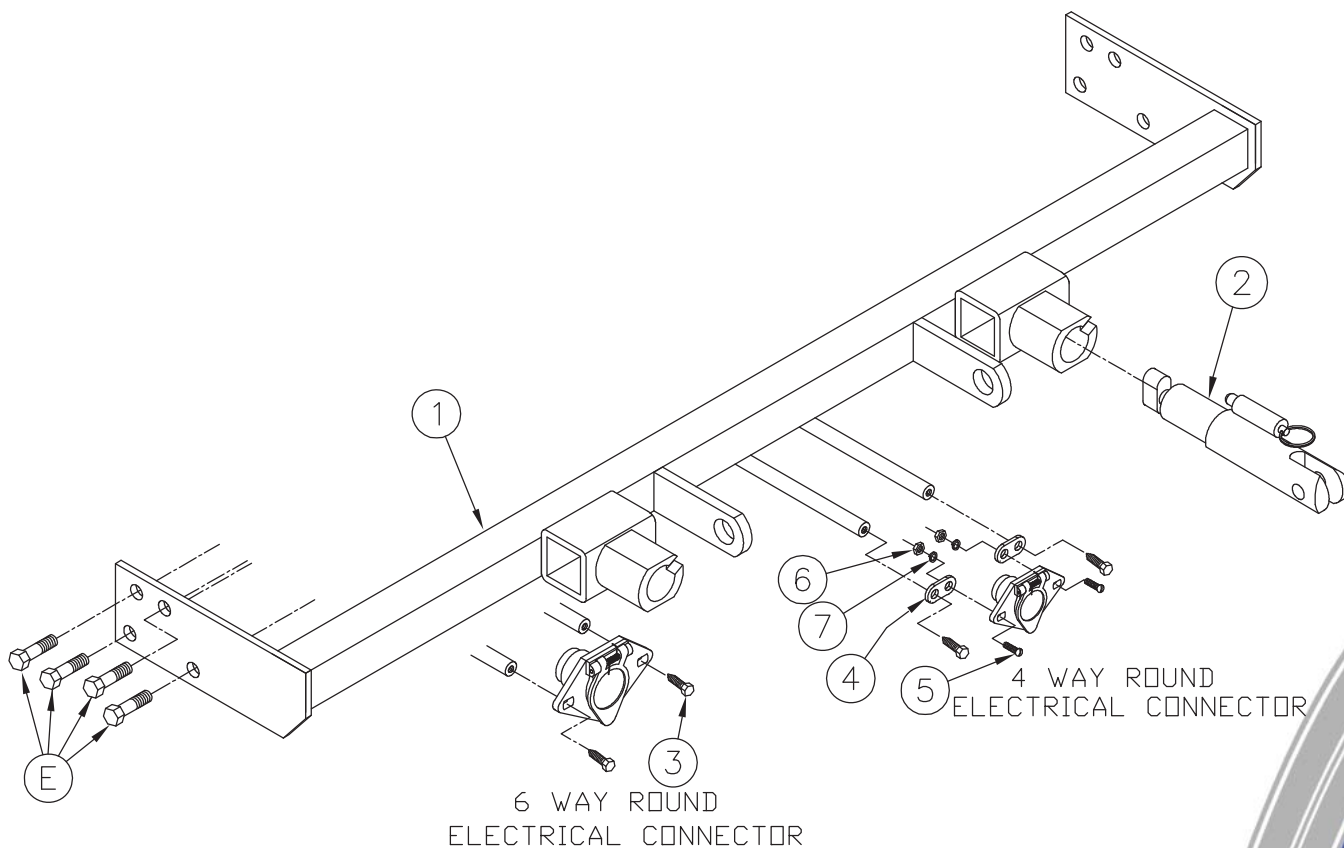
10MM, 17MM Sockets

Loctite Blue

Hacksaw

## Parts List

Ref. No.	Qty.	Part No.	Description
1	1	61-5891	Weldment, Base Plate, BX2315
2	2	62-3468	Assy, Att. Tab, Rem., SF/SB
3	2	201-0553	1/4-20 x 1/2 Hex Washer Head, Type F, Screw, ZP
4	2	101-5822	Adapter, 4-way Connector
5	2	201-0192	#10-32 x 1/2 Slot, Rd. Hd Screw
6	2	202-0047	#10-32 Hex Nut, ZP
7	2	203-0054	#10 Lock washer, ZP
E	8	Existing	2-6MM bolts - 6-10MM bolts
	2	226-0046	Baseplate Safety Cable, 36" CL III (Not Shown)
	2	229-0359	Quicklink, 3/8, ZP (Not Shown)
	2	290-0437	Receiver, Cap Plug (BLK) (Not Shown)



**IMPORTANT:** Use only genuine factory replacement parts on your Base Plate. Do not substitute homemade or nontypical parts. If a bolt is lost or in need of replacement, for your safety and the preservation of your Base Plate, be sure to use a replacement bolt of the same grade (Usually Grade 5, refer to parts list). Repair parts may be ordered through your nearest **Blue Ox** dealer or distributor.