

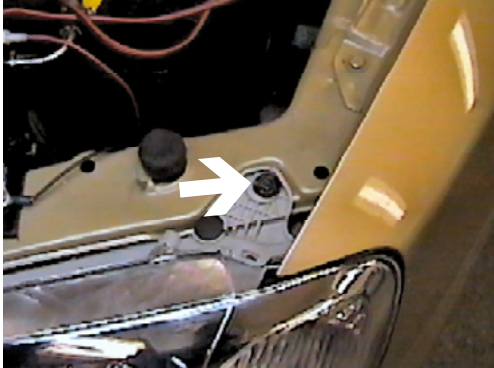


Strong As An Ox™

BX2317 Installation Instructions 2004 Hyundai XG350

Serial No.

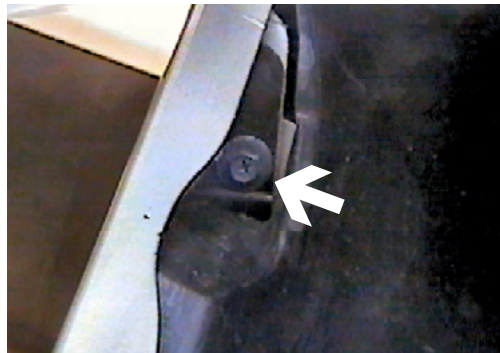
The headlight assembly and front fascia are removed for baseplate installation. No drilling is required. Power Steering core will be relocated. Trimming of fascia is required. The BX8869 is available for the vehicle. Attachment Tabs are 24 inches center to center and at height of 14 1/2 inches.



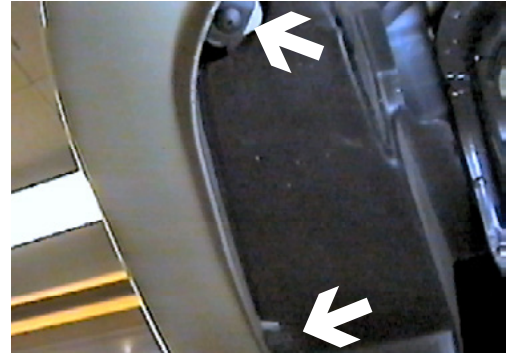
1. Remove three metric bolts from headlight assembly with the 10MM socket, both sides, pull forward, unplug electrical connections and set aside.



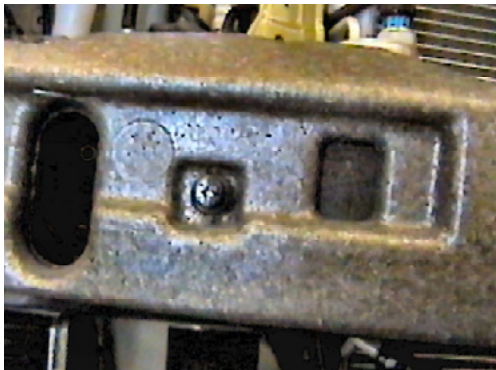
2. Remove one phillips head push pin just below headlight assembly, both sides. Remove one metric bolt from behind headlight assembly with the 10MM socket, both sides (white arrow).



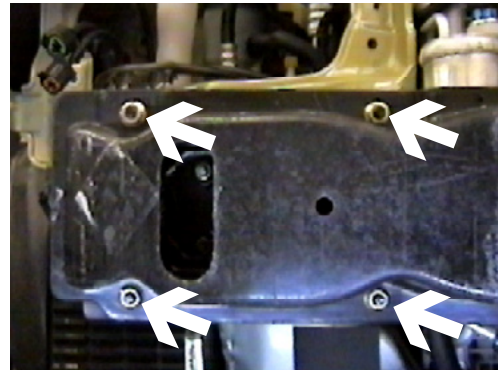
3. Just forward of front tire, on fascia's corner, is one metric bolt to remove with the 8MM socket or phillips screw driver, both sides.



4. Forward of front tires are two phillips screws to remove with the phillips screw driver, both sides. Pull fascia forward, unplug electrical connection and set fascia aside.



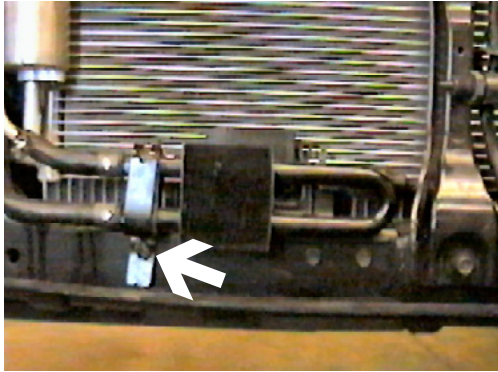
5. Remove two push pins from styrofoam on the front of metal bumper and set styrofoam aside.



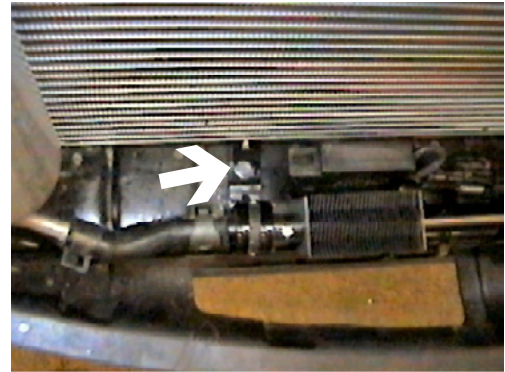
6. Remove four metric bolts from front bumper with the 12MM socket, both sides, pull bumper forward and set aside.



Strong As An Ox™



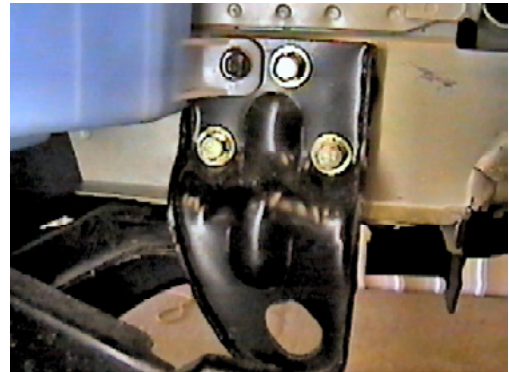
7. Using the 10MM socket, remove metric bolt from small radiator and bend bracket 90 degrees back toward the main radiator with the vise grips.



8. Slide bracket and small radiator back as far as possible on top of cross member to reposition out of the way for baseplate installation and screw in #10-16 x 1" self tapping screw into the top of cross member. Reinstall front bumper.



9. Remove the three metric bolts from tie down bracket on the driver's side with the 14MM socket (tie down bracket will not be reinstalled) and one metric bolt from air baffle with the 10MM socket.



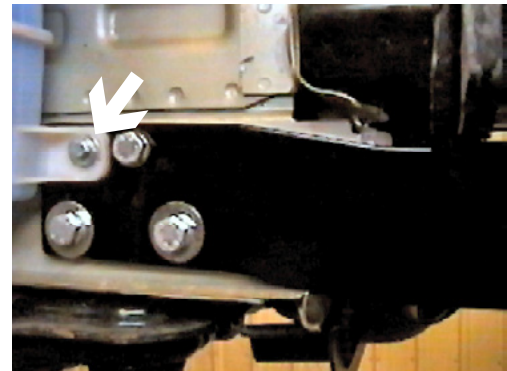
10. Remove the three metric bolts from tie down bracket on the passenger's side with the 14MM socket (tie down bracket will not be reinstalled) and one metric bolt from wind shield washer reservoir with the 10MM socket.



11. Cut webbing just forward of tie down bracket on the four bends with the hack saw, bend webbing sections forward with the vise grip and hammer the area flat, both sides.



Strong As An Ox™



12. While maintaining a level position, slide baseplate onto frame to align with existing tie down bracket holes, tighten the three 10MM bolts, lock and flat washers on the driver's side. **Be sure to use loctite on all bolts before tightening. Tighten all bolts according to Torque Chart in General Instruction Sheet.** Using the 6MM x 45MM hex bolt and lock washer fasten the air baffle to its original position.

13. While continuing to maintaining a level position, align the baseplate with existing tie down bracket holes, tighten the three 10MM bolts, lock and flat washers on the passenger's side. **Be sure to use loctite on all bolts before tightening. Tighten all bolts according to Torque Chart in General Instruction Sheet.** Using the 6MM x 30MM hex bolt and lock washer fasten the wind shield washer reservoir to its original position.

14. Attach the permanent baseplate safety cables to the provided convenience link on the baseplate. Secure the cables to a solid piece of the frame as described in the instructions included with the permanent baseplate safety cables. Be sure the safety cables do not rub against any hoses or moving parts. Do this on **BOTH** sides of the vehicle.

The dimensional variations between otherwise identical cars can be considerable. While the location and size of the holes in the baseplate were designed to allow for easy installation, it may be necessary to file a hole slightly to allow a bolt to clear.

Install the tow bar and safety cables according to the instructions included in their packages.

Do **not** substitute other devices if the tow bar pin and clip are lost.

DEALER OR INSTALLER: BE CERTAIN THE USER RECEIVES THE INSTRUCTION SHEET.



15. Hold fascia to its original position, mark and trim fascia to allow attachment tabs to come through fascia, as shown in photo on the right. Reinstall fascia and headlight assemblies. **Be sure all electrical components are plugged in properly.**



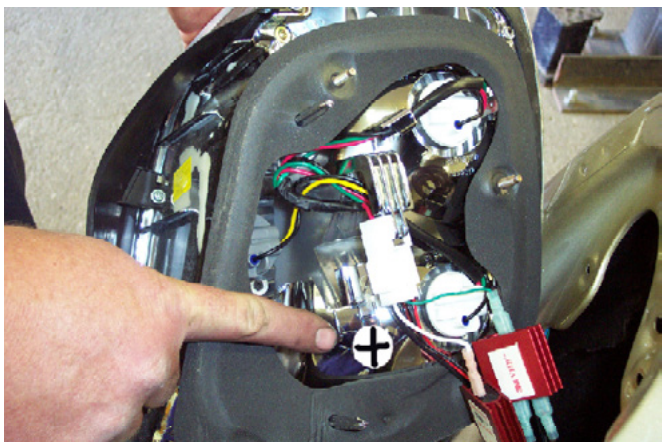
Strong As An Ox™

Tools Required

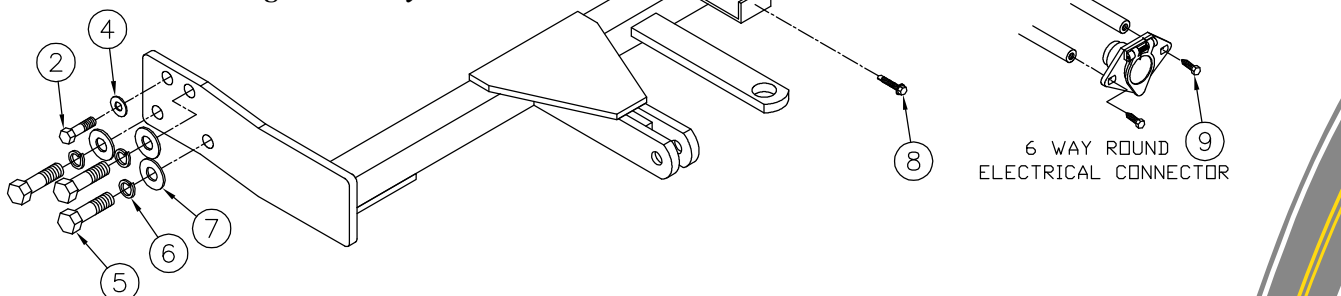
- | | | |
|-----------------------|---------------|-------------|
| 8MM Socket | 10MM Socket | 12MM Socket |
| 14MM Socket | Loctite | Vise Grips |
| Phillips Screw Driver | Utility Knife | Hack Saw |
| Hammer | | |

Parts List

Ref. No.	Qty.	Part No.	Description
1	1	61-6009	Weldment, Base Plate, BX2317
2	1	201-0655	.6MM-1 X 30MM, Hex Bolt, Grd. 8.8, ZP
3	1	201-0702	.6MM-1 X 45MM, Hex Bolt, Grd. 8.8, ZP
4	2	203-0001	1/4" Flat Washer, ZP
5	6	201-0495	10MM-1.25 X 45MM, Hex Bolt, Grd. 8.8, ZP
6	6	203-0104	10MM Lock Washer, ZP
7	6	203-0004	7/16" Flat Washer, ZP
8	3	201-0654	#10-16 x 1 Self Drilling Hd. Screw
9	2	201-0553	1/4-20 x 1/2 Hx. Wshd, Type F Screw
10	2	202-0047	#10-32 Hex Nut
11	2	203-0054	#10 Lock Washer
12	2	201-0192	#10-32 x 1/2 Slot, Rd. Hd. Screw
13	2	101-5822	Adapter, 4 Way Connector
14	2	226-0046(not shown)	36" Safety Cable
15	4	229-0359	3/8" Quick Links, ZP



Location for the Bx8869 on driver's side tail light assembly.



IMPORTANT: Use only genuine factory replacement parts on your Base Plate. Do not substitute homemade or nontypical parts. If a bolt is lost or in need of replacement, for your safety and the preservation of your Base Plate, be sure to use a replacement bolt of the same grade (Usually Grade 5, refer to parts list). Repair parts may be ordered through your nearest **Blue Ox** dealer or distributor.