



BX2334

2012-15 Hyundai Veloster Installation Instructions

Serial Number

Attachment Tab Height: 14-1/2"

Attachment Tab Width: 24"

Please read BOTH these Installation Instructions and the General Instructions prior to installing or operating this equipment.

- Blue Ox® towing products and accessories are intended to be installed by Blue Ox® Dealers who are familiar with our products and have the equipment and knowledge necessary to do "fit work". If needed, Blue Ox® Dealers can be found at www.blueox.com or by contacting our Customer Care Department at (402) 385-3051.
- Many Blue Ox® baseplates are designed to use existing holes and hardware to mount the baseplate to the towed vehicle. Even though bolts are there, do not assume they are adequate for baseplate mounting. Always use the hardware supplied in the hardware kit and existing hardware as specified in the installation instructions.

Bolt Torque Specifications		
Torque in Foot-Pounds for Inch Bolts		
Bolt Size	Grade 5	Grade 8
1/4"	10	14
5/16"	19	29
3/8"	33	47
7/16"	54	78
1/2"	78	119
5/8"	154	230
3/4"	257	380



Bolt Torque Specifications		
Torque in Foot-Pounds for Metric Bolts		
Bolt Size	Grade 8.8	Grade 10.9
6MM	6	8
8MM	16	22
10MM	31	40
12MM	54	70
14MM	89	117
16MM	161	230
18MM	222	318

If the front of your vehicle looks different than this, please contact us at (402)385-3051.

Reference your vehicle owner's manual for manufacturer's towing specifications.

WARNING

Failure to read and follow these instructions could result in separation of the towed vehicle from the tow bar, causing property damage, loss of towed vehicle, personal injury or death.



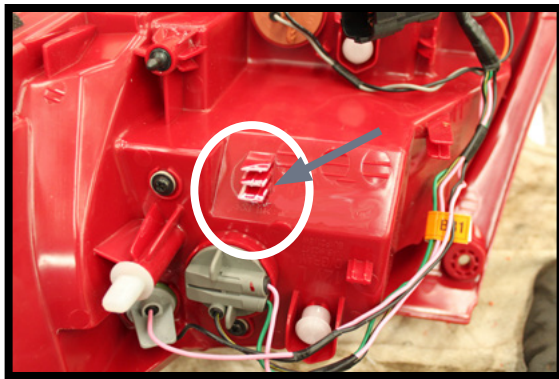
BX2334 2012-15 Hyundai Veloster Installation Instructions

Removable Tabs: Motorhome mount tow bars are recommended for use with this baseplate. Due to the design of the removable tabs the RangeFinderII tow bar can not be used. Adapters, except the BX8833 and BX88151, can not be used with this baseplate.

Instruction Notes: The fascia, plastic fascia guard, bumper, and air horn are removed and reinstalled for the baseplate installation. Some drilling and trimming is required.

The dimensional variations between otherwise identical vehicles can be considerable. While the baseplate was designed for easy installation, it may be necessary to tailor the baseplate slightly to compensate for vehicle manufacturer's tolerances. These minor adjustments may include filing a hole slightly, bending electrical rods or bending end plates.

The BX8869 Tail Light Wiring Kit is recommended for this vehicle.



1. Trim tabs only if installing a BX8869 Tail Light Wiring Kit.



2. Drill a 1" hole to install the 3 wire automotive socket.

NOTICE

- Handling of some cosmetic parts when installing this product may require the use of protective covers, rags, specialty tools, etc. to prevent damage.
- When using power drills be aware of the dangers of torque and drill bit length.
- When using a reciprocating saw be aware of objects behind the cutting surface.
- Use a good quality paint to spray cut edges of frame to prevent rusting.
- Be sure that **ALL** electrical connections are plugged in and accessories are functioning properly before reinstalling the fascia.
- The baseplate is computer tested to your vehicle's GVWR, exceeding this weight will void the manufacturer's warranty.
- Be sure to use Loctite® Red on all bolts before tightening. Tighten all bolts according to the torque chart provided.
- Dealer or installer be certain the user receives these instruction sheet.
- If the baseplate is in an accident, it must be replaced. **DO NOT** use it again! An accident can cause unseen damage and using it again could result in more damage or serious injury. **DO NOT** use the baseplate if it is damaged or missing parts.

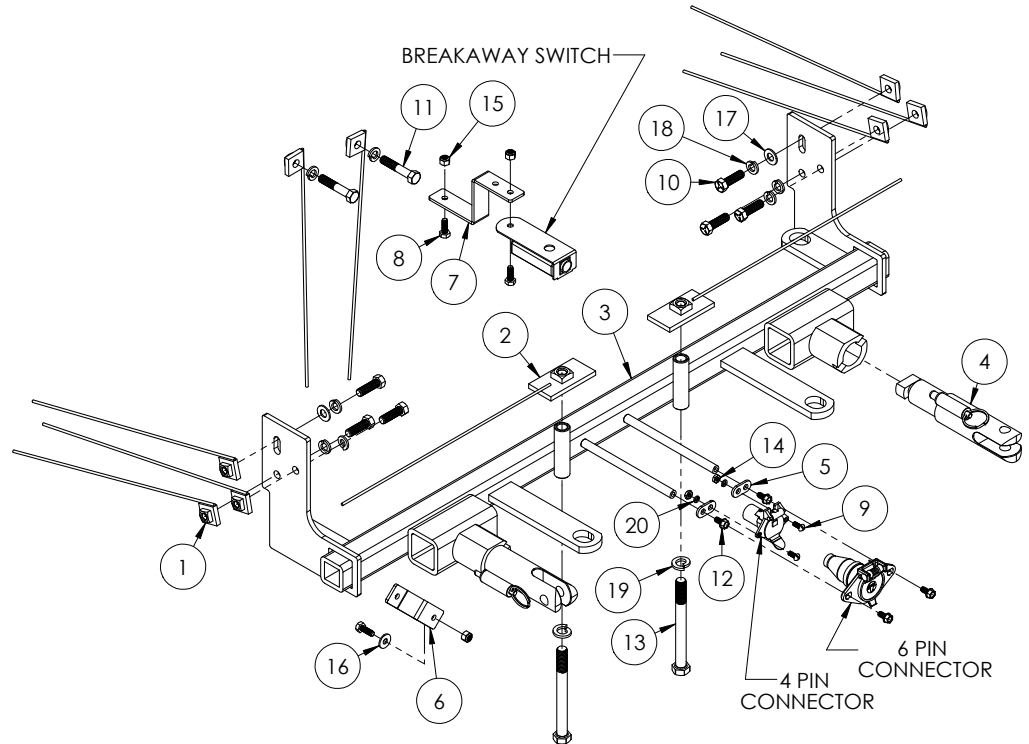


BX2334

2012-15 Hyundai Veloster Installation Instructions

Tools Required

Large Vise Grip
 Flat Screwdriver
 Utility Knife
 Phillips Screwdriver
 Torque Wrench
 Drill
 Tape Measure
 Loctite® RED
 1/2" Drill Bit
 1/4" Drill Bit
 13/32" Drill Bit
 10Mm Socket
 12Mm Socket
 9/16" Socket
 9/16" Wrench



Item No.	Part No.	Description	Qty.
1.....	61-5208	3/8"-16 Nut Plate w/ 14" Wire	8
2.....	61-5342	1/2"-13 Nut Plate w/ Wire	2
3.....	61-6981	BX2234 Baseplate Weldment	1
4.....	62-3468	Attachmet Tab Assembly	2
5.....	101-5822	4 Way Connector Adapter	2
6.....	102-7195	Bracket	1
7.....	102-7297	Breakaway Bracket	1
8.....	201-0050	1/4"-20 X 3/4" Hex Head Bolt, Grade 5, ZP	3
9.....	201-0192	#10-32 x 1/2" Round Slotted Head Screw	2
10.....	201-0368	3/8"-16 x 1-1/4" Hex Head Bolt, Grade 5, ZP	6
11.....	201-0444	3/8"-16 x 2" Hex Head Bolt, Grade 5, ZP	2
12.....	201-0553	1/4"-20 x 1/2" Self Tapping Hex Head Bolt, ZP	2
13.....	201-0786	1/2"-13 x 5" Hex Head Bolt, Grade 5, ZP	2
14.....	202-0047	#10-32 Hex Nut	2
15.....	202-0102	1/4"-20 Hex Nylon Lock Nut, ZP	3
16.....	203-0001	1/4" Flat Washer, ZP	3
17.....	203-0003	3/8" Flat Washer, ZP	2
18.....	203-0010	3/8" Lock Washer, ZP	8
19.....	203-0012	1/2" Lock Washer, ZP	2
20.....	203-0054	#10 Lock Washer, ZP	2
21 (not shown).....	226-0046	36" Class III Safety Cable	2
22 (not shown).....	229-0359	3/8" Quicklink , ZP	2
23 (not shown).....	290-0437	Black Cap Plug Receiver	2

Important:

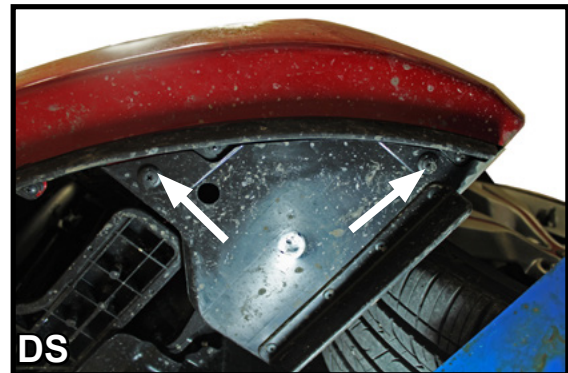
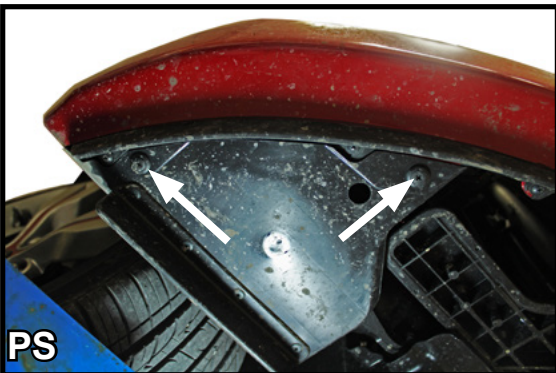
Use only genuine factory replacement parts on your baseplate. Do **NOT** substitute homemade or non-typical parts. If a bolt is lost or in need of replacement, for your safety and the preservation of your baseplate, be sure to use a replacement bolt of the same grade (In most cases it will be Grade 5, please reference the parts list above). Replacement parts may be ordered through your nearest Blue Ox® Dealer or Distributor. Failing to follow and/or altering these installation instructions in either installation or required equipment will void the manufacturer's warranty. Towing behind a non-motorized vehicle will void the warranty.

BX2334

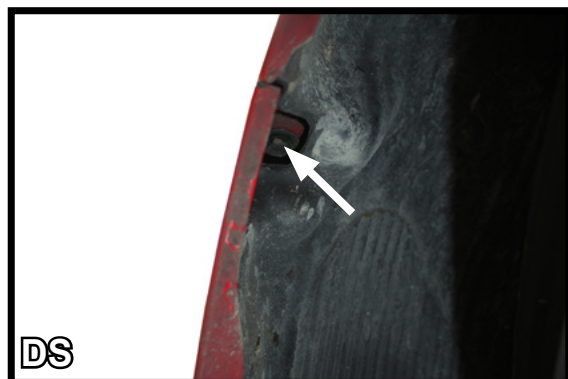
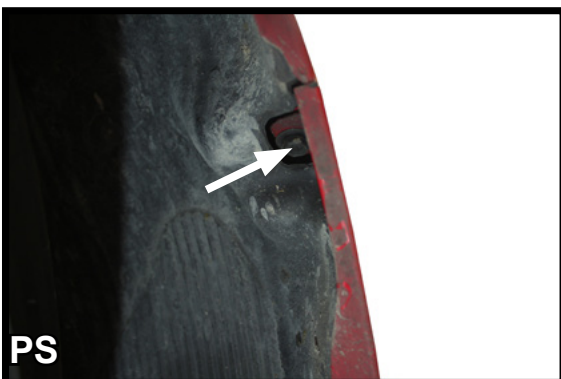
2012-15 Hyundai Veloster Installation Instructions



1. With a 10mm socket, remove the two (2) bolts on the top portion of the fascia. Using a flat screwdriver, release the push pin.



2. With a phillips screwdriver, remove the two (2) screws from the underside of the fascia.



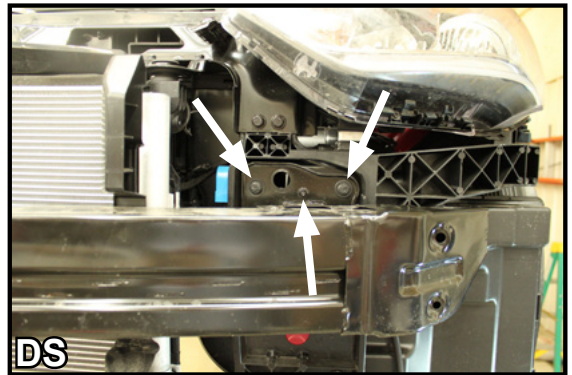
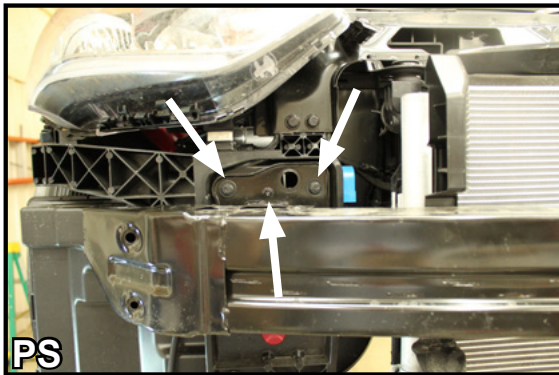
3. With a 10Mm socket, remove the bolt located on the outer edge on the front wheel well area of the vehicle.

BX2334

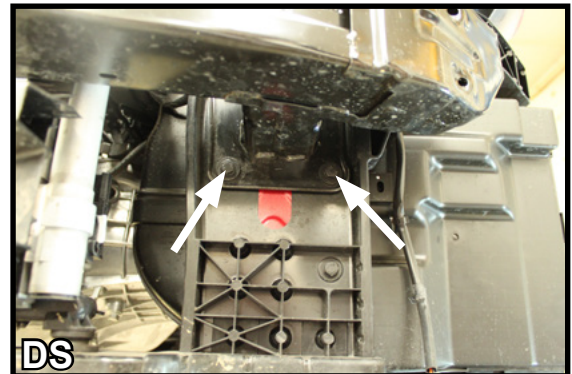
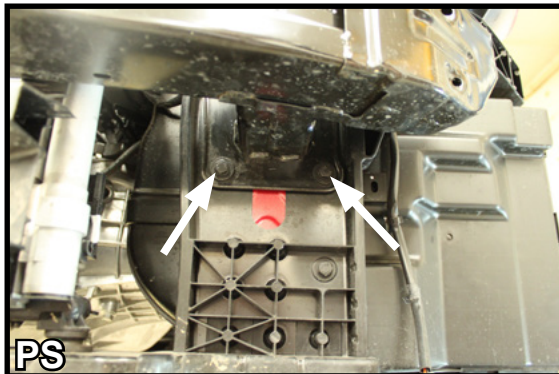
2012-15 Hyundai Veloster Installation Instructions



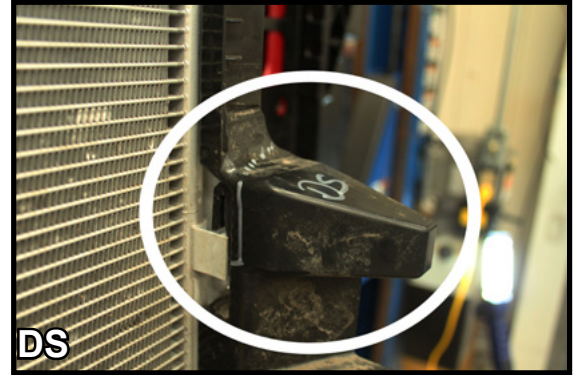
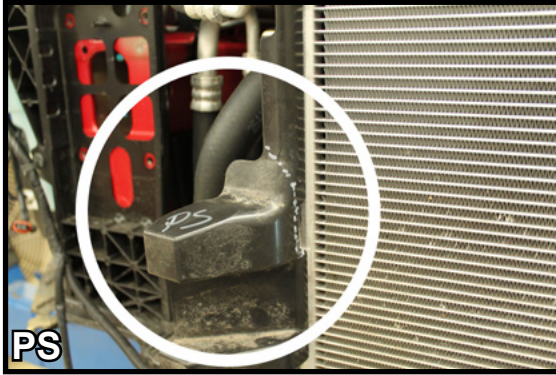
4. Pull the side of the fascia slightly downward away from the headlights. Lift the side upward and gently away from the vehicle. Place the front fascia to the side during baseplate installation.



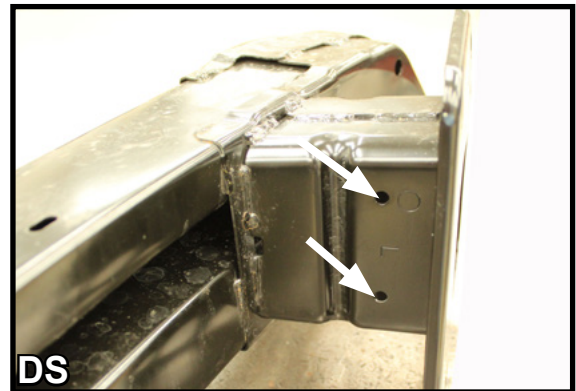
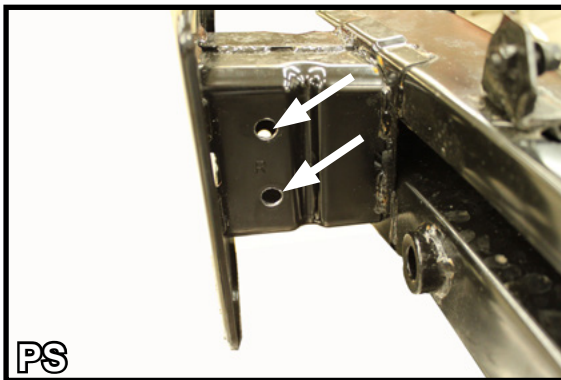
5. Remove the three (3) bolts located above the bumper. The two (2) outer bolts require a 12mm socket. The center bolt will require a 10mm socket to remove.



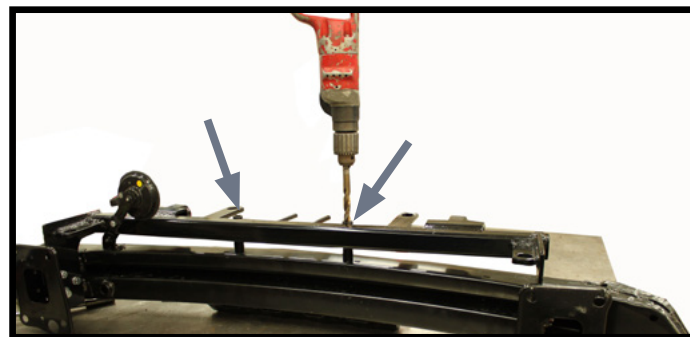
6. Remove the two (2) 12mm bolts that are located under the bumper. Once the hardware is removed from both sides, place the bumper upside down on a steady, flat working surface.
7. Using a 10Mm socket remove air horn and lay it aside. It will be reinstalled after the baseplate has been installed.



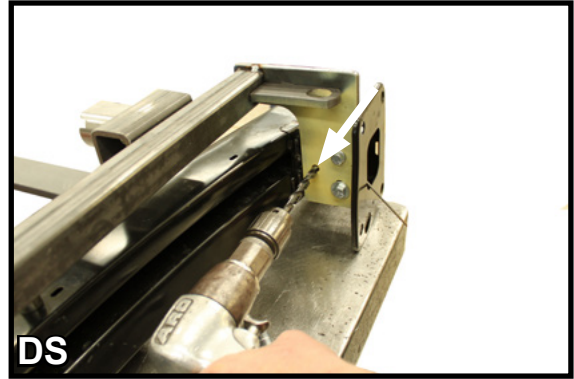
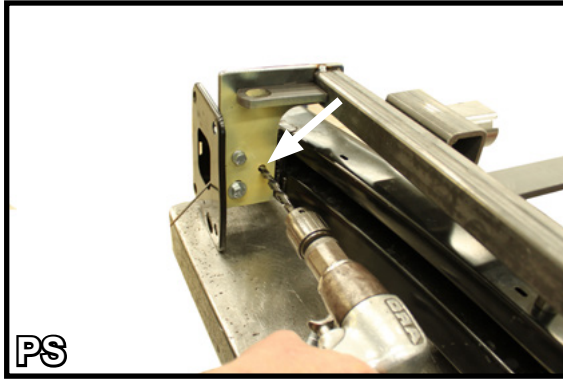
8. Notch the bumper support tab at an angle to remove the outward protruding portion.
NOTE: Be careful not to notch the hook behind.



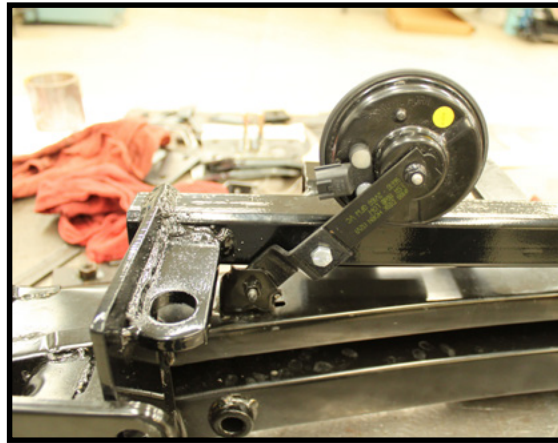
9. Ream out the existing two (2) holes on both side of the bumper using a 13/32" drill bit.



10. Once the baseplate has been installed, drill out the two (2) upright tubes that are located on the front of the baseplate to 17/32". Apply Loctite[®] Red prior to inserting the hardware.

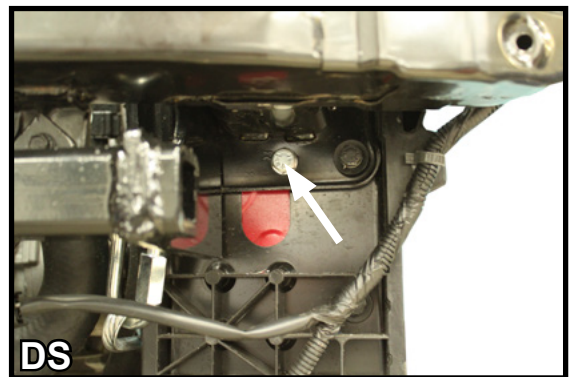
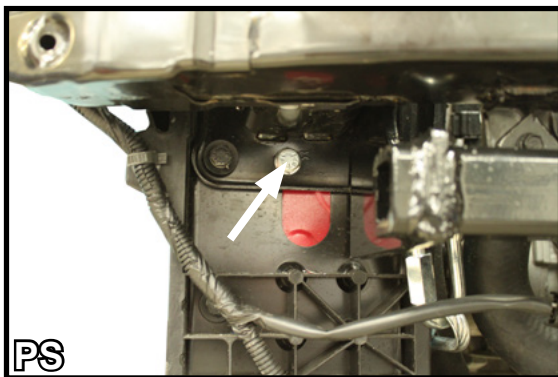


11. Using the baseplate end plates as a guide, drill an additional 13/32" hole on both sides.



12. Reattach air horn using the air horn extension bracket that has been provided with your baseplate.

13. Remount bumper using the existing hardware. Apply Loctite[®] Red to all holes prior to inserting hardware.

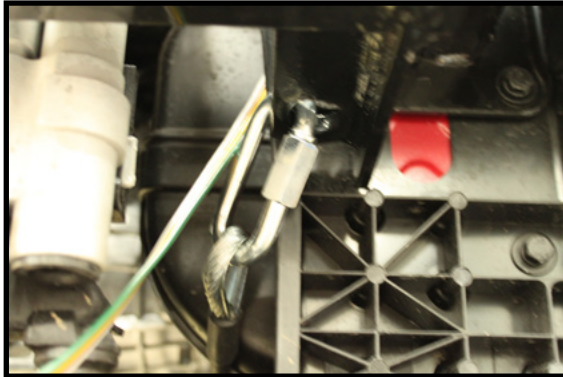


14. For additional bumper support, drill a 13/32" hole on both sides of the bumper as shown. Install 3/8"-16 x 2" bolts with 3/8" nut plates on the inside of the frame.



BX2334

2012-15 Hyundai Veloster Installation Instructions



15. Attach the permanent baseplate safety cables to the provided convenience link on the baseplate. The photo above shows the recommended installation of the cables to frame of vehicle. Additional options may interfere with suggested mounting; in this case, secure the cables to a solid piece of the frame as described in the instructions included with the permanent baseplate safety cables. Be sure the safety cables do not rub against any hoses or moving parts. Do this on both sides of the vehicle.

CUSTOMER SERVICE COMMITMENT

Blue Ox® is committed to providing you with exceptional customer care throughout your lifetime with our products. Our team is here to assist you with any questions you may have regarding the performance of your product. Simply call (402) 385-3051 and you can speak with our customer care team.

Additionally, please visit our website to see which rallies our Destination America team will be attending. For a nominal fee, our service technician will service your towing system to ensure it's in proper working condition. Also, as a commitment to our customers, should you visit our factory, you can stay at our full service Blue Ox® campground at no charge along with enjoying a factory tour.

Again, thank you for being our customer and for the confidence you have shown in the performance of our products. It is because of customers like you we enjoy the success we have today.

© 2015 Blue Ox
One Mill Road, Industrial Park
Pender, Nebraska 68047
Phone: (402) 385-3051
Fax: (402) 385-3360
www.blueox.com