



Strong As An Ox™

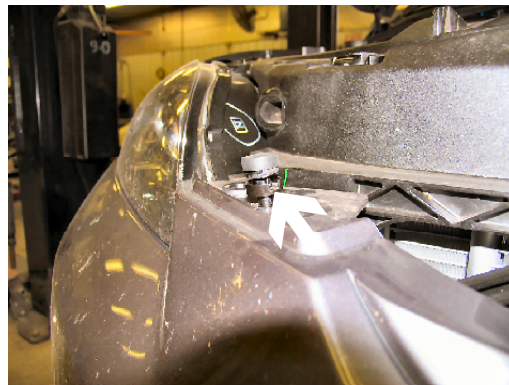
BX2520 Installation Instructions 2004 Mazda 3

Serial No.

The headlight assembly, front fascia, horn bracket and windshield washer reservoir are removed for baseplate installation. Drilling is required. Trimming of air dam on metal bumper is required. The BX8848 is available for the vehicle. Attachment Tabs are 24 inches center to center and a height of 13 3/4 inches.



1. Remove the Phillips screw from top edge of fascia just inside of headlight, both sides.



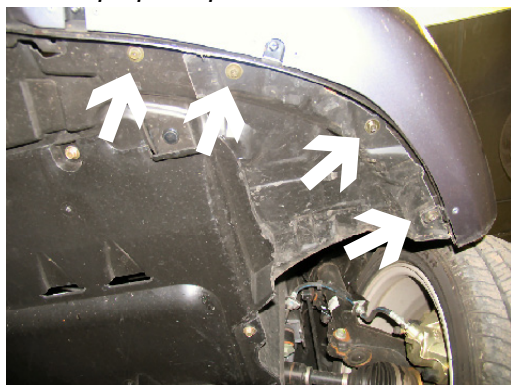
2. Using the small flat screw driver, insert into opening on the side of large push pin, pry up the top half to release and lift up out of hole, both sides.



3. Just forward of front tire on fascia and wheel well edge is one Phillips screw and one Phillips push pin to remove, both sides.



4. Pull wheel well back from fascia and remove one metric bolt from corner of fascia with the 8MM socket, both sides.



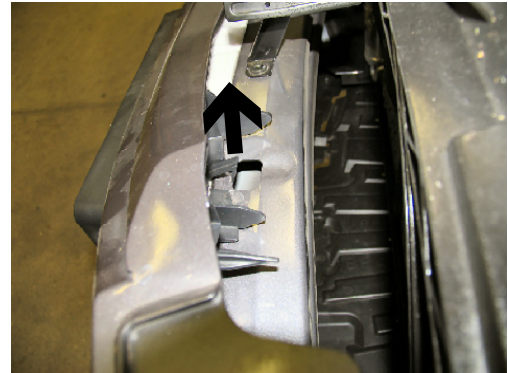
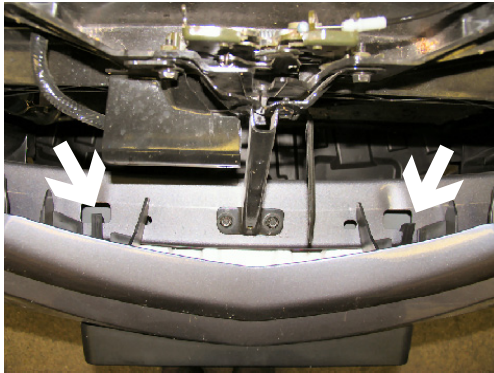
5. Remove the eleven metric bolts just forward of the front tire, on the bottom side of fascia, using the 8MM socket, both sides.



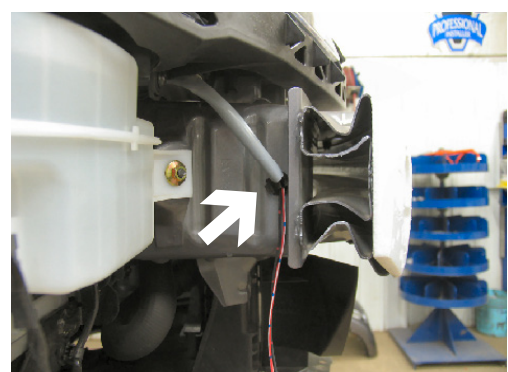
6. Pull both fascia corners out to the side.



Strong As An Ox™

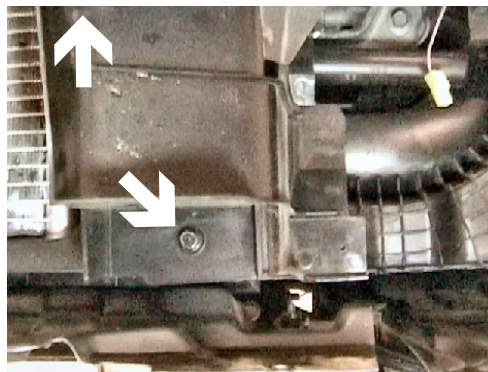


7. Locate two tabs just behind the top edge of fascia (white arrows) and carefully lift tabs, pull fascia forward, disconnect fog lights if applicable and set fascia aside.



8. Remove metric bolt from horn bracket on driver's side, using the 12MM socket, unplug electrical connection and set aside. Pull wire loom clip from hole in frame.

9. Remove wire loom clip from passenger's side on frame.

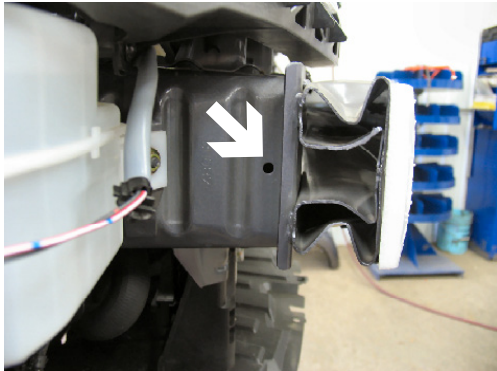


10. Remove the metric bolt from air dam on passenger's side and the two metric bolts on the driver's side air dam with the 10MM socket, release clip from back side of radiator support and set aside.

11. Remove two metric bolts from the driver's side air dam with the 10MM socket and one push pin on the side of frame rail, set air dam aside.



Strong As An Ox™



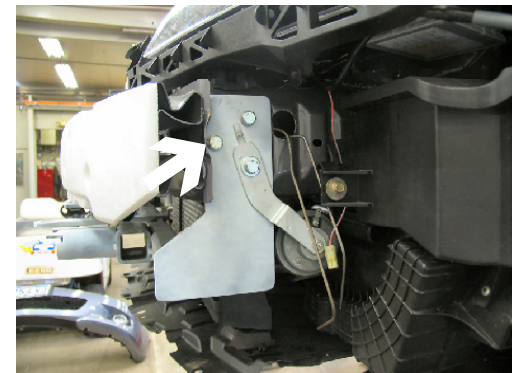
12. Drill out the existing hole in frame for the wire loom clip with the 13/32" drill bit, both sides.



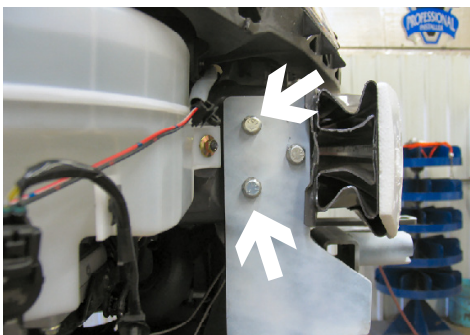
13. Bend out the bumper bracket using the vise grip on both sides, to open area for bolt insertion later with installation of baseplate.



14. Using the 1 1/4" hole saw, cut a hole in the side of frame rail just back from baseplate, both sides. **NOTE: Baseplate is painted white to increase visibility in photos.**



15. Slide baseplate onto frame rail to align with the existing holes for the wire loom clips on both sides. Insert nut plate with wire into 1 1/4" hole in frame to align with existing holes, tighten the 3/8" hex bolt and lock washer through baseplate, into nut plate with the 9/16" socket, both sides while maintaining a level position with baseplate and frame. **NOTE: Driver's side of baseplate will also align with existing hole for horn bracket. Reinstall horn bracket in the existing hole using the 8MM hex bolt, lock and flat washer provided. Be sure and use Loctite Red on all bolts before tightening. Tighten all bolts according to the torque chart in the General Instruction sheet enclosed in white envelope.**



16. Using the baseplate as a template drill two holes on the passenger's side and the one hole on the driver's side with the 13/32" drill bit. Insert nut plate with wire into 1 1/4" hole in frame to align with existing holes, tighten the 3/8" hex bolt and lock washer through baseplate, into nut plate with the 9/16" socket, both sides. **Be sure and use Loctite Red on all bolts before tightening. Tighten all bolts according to the torque chart in the General Instruction sheet enclosed in white envelope.**



Strong As An Ox™



17. Hold air dam as close to its original position, mark and trim area to allow reinstallation for both sides. Reinstall both air dams.



18. Align and hold fascia as close as possible to its original position, cut grill to allow baseplate receivers and convenience links (safety cable connection) to come through grill, with the diagonal cutters, both sides.

19. Reinstall fascia. Be sure to plug in all electrical connections if applicable.

20. The dimensional variations between otherwise identical cars can be considerable. While the location and size of the holes in the baseplate were designed to allow for easy installation, it may be necessary to file a hole slightly to allow a bolt to clear.

21. Install the tow bar and safety cables according to the instructions included in their packages.

22. Do **not** substitute other devices if the tow bar pin and clip are lost.

23. DEALER OR INSTALLER: BE CERTAIN THE USER RECEIVES THE INSTRUCTION SHEET.



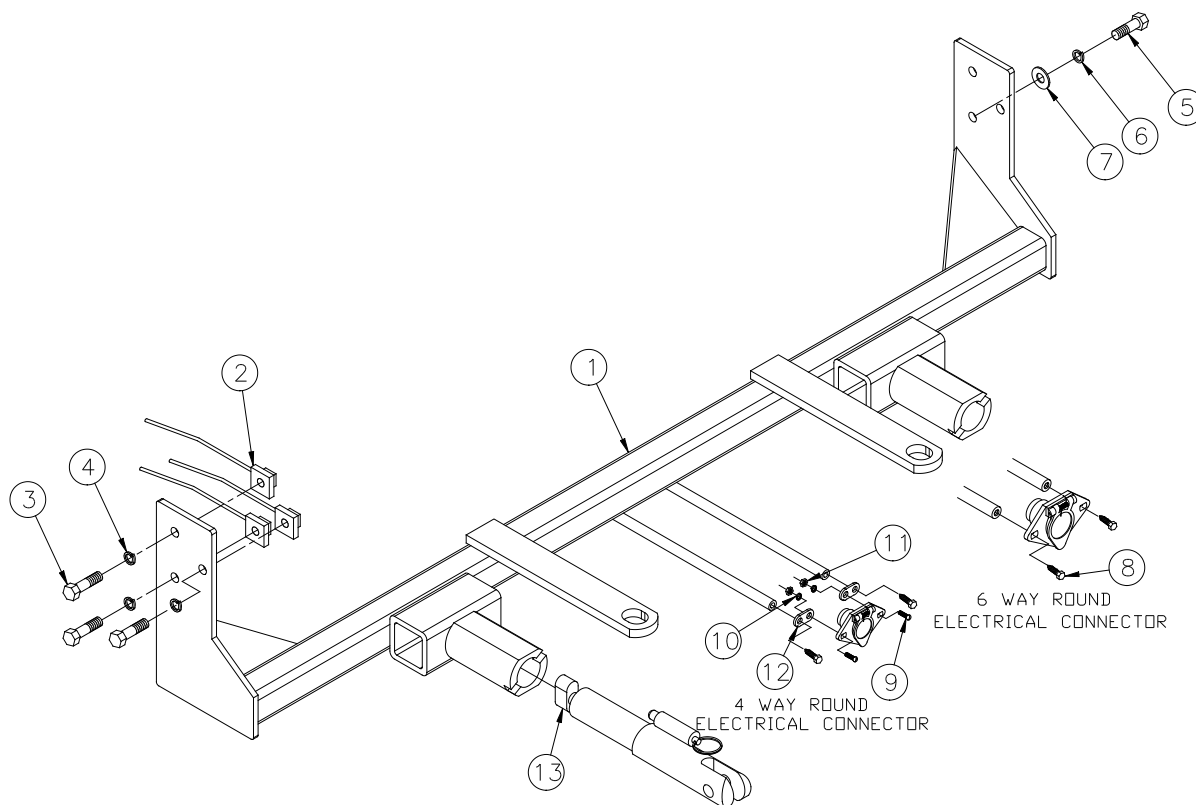


Tools Required

8MM Socket	10MM Socket	12MM Socket
Small Flat Screw Driver	Loctite Red	13/32" Drill Bit
Phillips Screw Driver	Vise Grips	9/16" Socket
Diagonal Cutter	1 1/4" Hole Saw	Drill

Parts List

Ref. No.	Qty.	Part No.	Description
1	1	61-6066	Weldment, Base Plate, BX2520
2	5	61-5208	3/8" Nut Plate, with Wire
3	5	201-0440	3/8-16 x 1 1/2 Bolt, Grd. 5, ZP
4	5	203-0010	3/8 Lock Washer, ZP
5	1	201-0446	8MM-1.25 x 30MM Bolt, Grd. 8.8, ZP
6	1	203-0102	8MM Lock Washer, ZP
7	1	203-0107	8MM Flat Washer, ZP
8	2	201-0553	1/4-20 x 1/2 Hx. Wshd, Type F Screw
9	2	201-0192	#10-32 x 1/2 Slot, Rd. Hd. Screw
10	2	203-0054	#10 Lock Washer
11	2	202-0047	#10-32 Hex Nut
12	2	101-5822	Adapter, 4 Way Connector
13	2	62-3469	Attachment, Assembly, SF/ LB (R)



IMPORTANT: Use only genuine factory replacement parts on your Base Plate. Do not substitute homemade or nontypical parts. If a bolt is lost or in need of replacement, for your safety and the preservation of your Base Plate, be sure to use a replacement bolt of the same grade (Usually Grade 5, refer to parts list). Repair parts may be ordered through your nearest **Blue Ox** dealer or distributor.