



Baseplate Installation Instructions

BX2631

2011-15 Ford F350 (Includes Super Duty) Installation Instructions

Serial Number

Please read BOTH these Installation Instructions and the General Towing Instructions before attempting to install or operate this equipment.

- Blue Ox® towing products and accessories are intended to be installed by Blue Ox® Dealers who are familiar with our products and have the equipment and knowledge to do “fit work.” When necessary, Blue Ox® Dealers can be found at www.blueox.com or by contacting our Customer Care Department at (402) 385-3051.
- Many Blue Ox® Baseplates are designed to use existing holes and hardware to mount the baseplate to the towed vehicle. Even though bolts are there, do not assume they are adequate for baseplate mounting. Always use hardware supplied in the hardware kit or existing hardware specified in the Baseplate Towing Installation Instructions.

Attachment Tab Height: 22-1/4"
Attachment Tab Width: 31-7/8"

Bolt Torque Specifications

Torque in Foot-Pounds for Inch Bolts

Bolt Size	Grade 5	Grade 8
1/4"	10	14
5/16"	19	29
3/8"	33	47
7/16"	54	78
1/2"	78	119
5/8"	154	230
3/4"	257	380

Confirm the towability and pre-towing procedures for your vehicle with the owner’s manual or contact the vehicle’s manufacturer for specific towing procedures.

Bolt Torque Specifications

Torque in Foot-Pounds for Metric Bolts

Bolt Size	Grade 8.8	Grade 10.9
6MM	6	8
8MM	16	22
10MM	31	40
12MM	54	70
14MM	89	117
16MM	161	230
18MM	222	318



If the front of your vehicle looks different than this, call us at (402) 385-3051.

WARNING

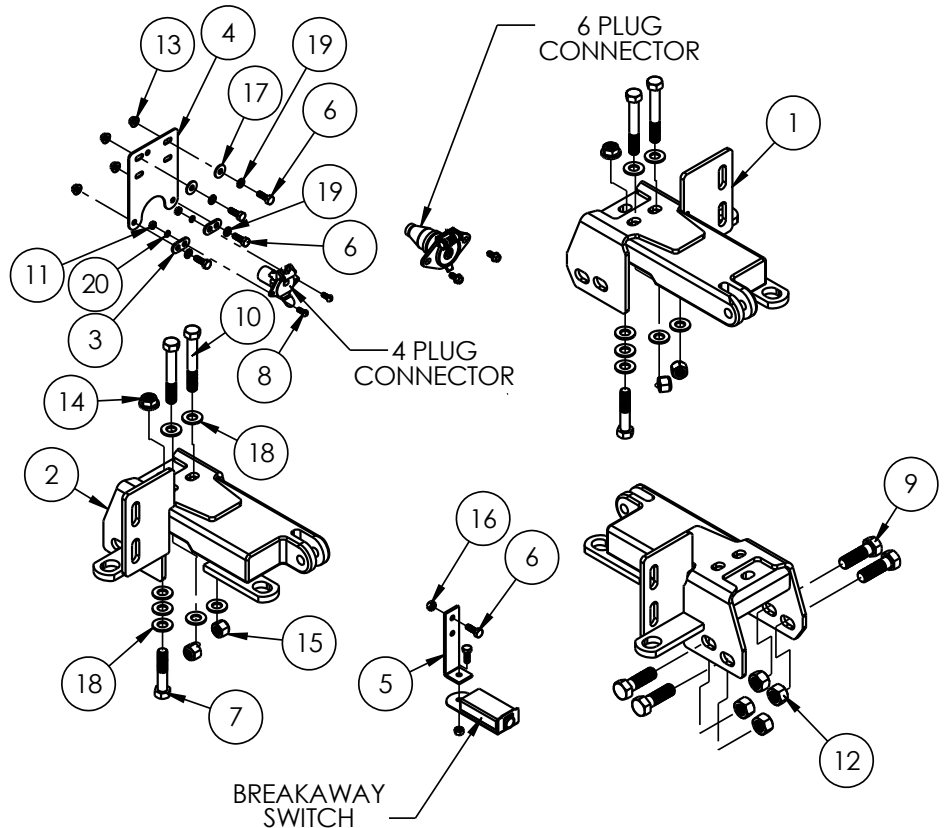
Failure to read and follow these instructions could result in separation of the towed vehicle from the tow bar, causing property damage, loss of towed vehicle, personal injury or death.

BX2631
2011-15 Ford F350 (Includes Super Duty)
Installation Instructions

Item No.	Part No.	Description	Qty.
1.....	61-6865	BX2631 Baseplate, Driver Side	1
2.....	61-6866	BX2631 Baseplate, Passenger Side	1
3.....	101-5822	4 Way Connector Adapter	2
4.....	101-6739	Electrical Bracket	1
5.....	102-7186	Breakaway Bracket	1
6.....	201-0050	1/4"-20 x 3/4" Hex Head Bolt, Grade 5, ZP	6
7.....	201-0153	1/2"-13 x 2-1/2" Hex Head Bolt, Grade 8, ZP	2
8.....	201-0192	#10-32 1/2" Round Slotted Head Screw	2
9.....	201-0351	5/8"-11 x 2" Hex Head Bolt, Grade 5, ZP	4
10.....	201-0369	1/2"-13 x 3-1/2" Hex Head Bolt, Grade 5, ZP	4
11.....	202-0047	#10-32 Hex Nut	2
12.....	202-0064	5/8"-11 Hex Nylon Insert Lock Nut, ZP	4
13.....	202-0069	1/4"-20 Hex Flange Whiz Lock Nut, ZP	4
14.....	202-0072	1/2"-13 Hex Flange Whiz Lock Nut, ZP	2
15.....	202-0094	1/2"-13 Hex Nylon Insert Lock Nut, ZP	4
16.....	202-0102	1/4"-20 Hex Nylon Insert Nut, ZP	2
17.....	203-0001	1/4" Flat Washer, ZP	2
18.....	203-0005	1/2" Flat Washer, ZP	14
19.....	203-0008	1/4" Lock Washer, ZP	4
20.....	203-0054	#10 Lock Washer	2
21 (not shown).....	226-0049	36" Class IV Baseplate Safety Cable	2
22 (not shown).....	229-0512	1/2" Quicklink , ZP	2
23 (not shown).....	290-0437	Black Cap Plug Receiver	2
24 (not provided).....	293-1339	Breakaway Switch	1
25 (not provided).....	294-0805	4 Pin Connector	1
26 (not provided).....	294-0902	6 Pin Connector	1

Tools Required

- | | |
|----------------------|------------------|
| 13MM Socket | Torque Wrench |
| 15MM Socket | Tape Measure |
| 18MM Socket | Drill |
| 3/4" Socket/Wrench | 17/32" Drill Bit |
| 15/16" Socket/Wrench | 5/16" Drill Bit |
| Large Vise Grips | 21/32" Drill Bit |
| Flat Screwdriver | 5/8" Drill Bit |
| Loctite® RED | |



BX2631
2011-15 Ford F350 (Includes Super Duty)
Installation Instructions

Vehicle Weight: Due to the weight of this vehicle, use of the BX7520P or BX7540P tow bar is recommended. This baseplate will work with standard Blue Ox tow bars and adapters. But to insure your safety, you should check that the weight of the tow vehicle does not exceed the weight rating of the tow bar or adapter before using.

Installation Notes: The fascia and air dam are removed for installation. Some drilling is required. Tow hooks must be removed and remain off the vehicle after installation.

The dimensional variations between otherwise identical vehicles can be considerable. While the baseplate was designed for easy installation, it may be necessary to tailor the baseplate slightly to compensate for auto manufacturer's tolerances. These minor adjustments may include filing a hole slightly, bending electrical rods or bending end plates.

The BX8848 4-Diode Wiring Kit is recommended for this vehicle.

Handling of some cosmetic parts when installing this product may require the use of protective covers, rags, specialty tools, etc. to prevent damage.

Installation Instructions:

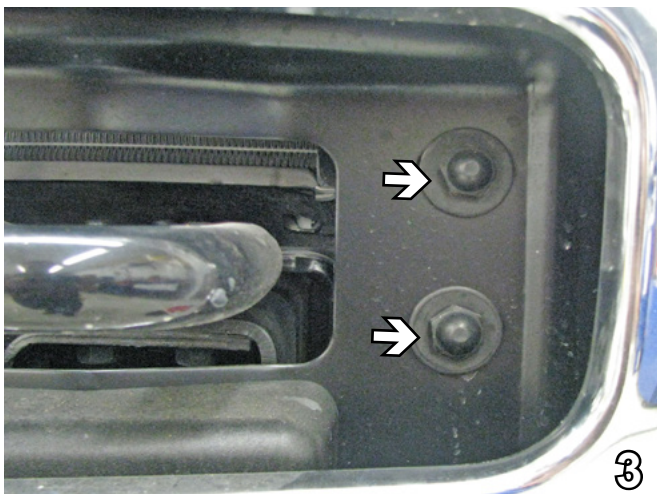


1. Using a 13MM socket, remove two metric bolts located just forward of the front tire. Do this to both sides of the vehicle. Set bolts aside to be reinstalled later.

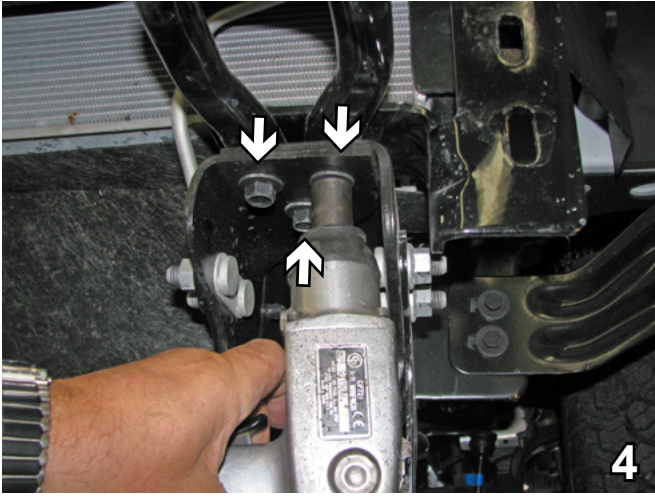


2. Remove three push pins from the bottom edge of the plastic cover. Set cover and push pins aside to be reinstalled later.
3. Using an 18MM socket, remove the two bolts on the side of the bumper. Do this to both sides of the vehicle. Set the bolts and the bumper aside to be reinstalled later.

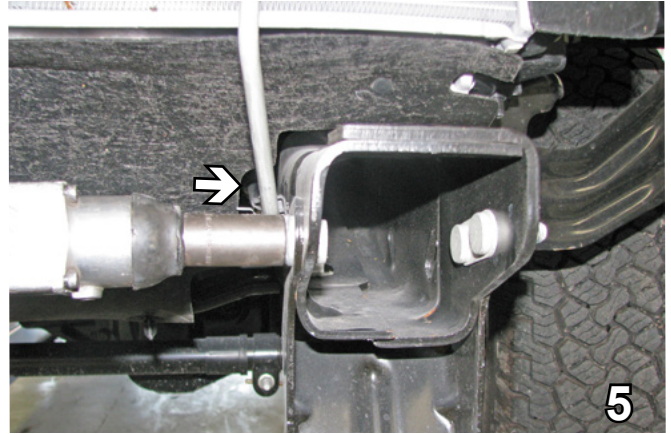
NOTE: If some vehicles have a heater core element plug, the Christmas tree pin will need to be released on the passenger side (see gray arrow on step 16).



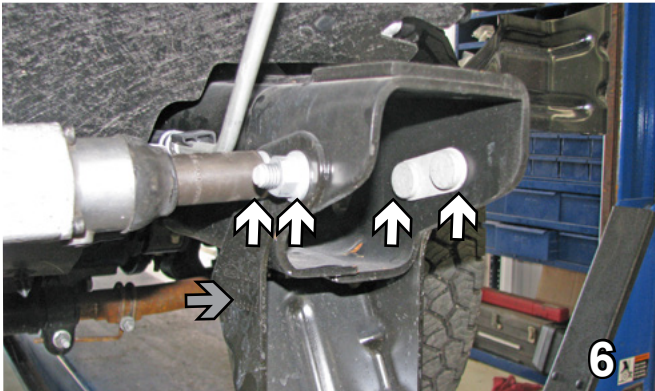
BX2631
2011-15 Ford F350 (Includes Super Duty)
Installation Instructions



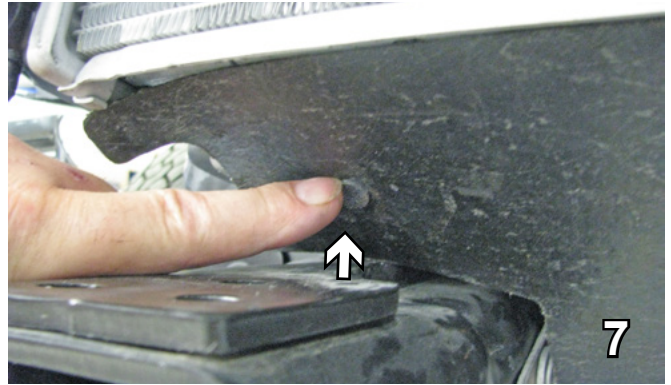
4. Remove the tow hook by removing the three bolts underneath it using a 15MM socket. Set tow hooks and bolts aside--they will not be used again. Use a 17/32" drill bit to ream the two front holes. Do this on both sides.



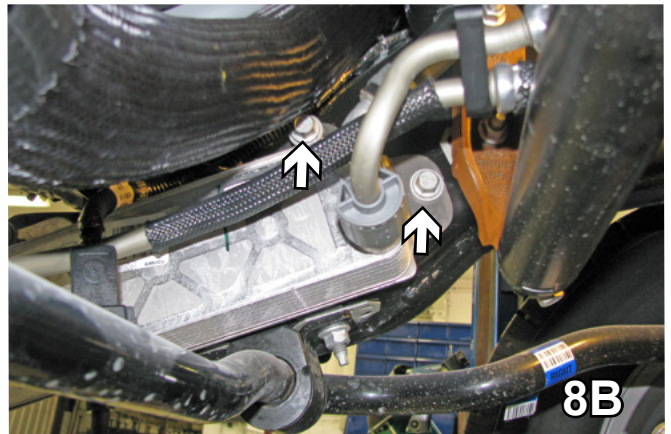
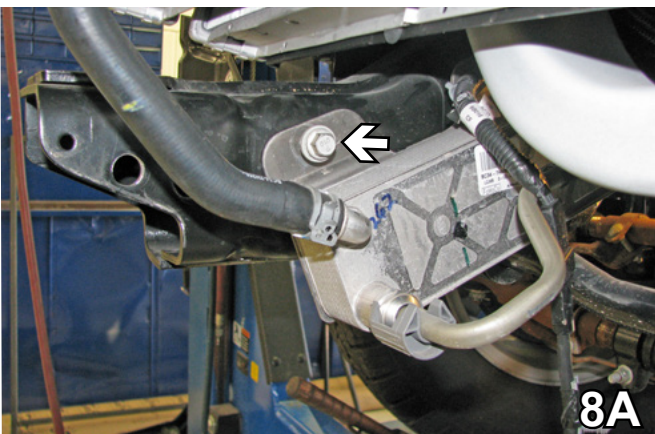
5. On the driver's side, it will be necessary to pull the Christmas tree pin from the coolant line bracket that goes into the frame in order to position the baseplate. It will be reinstalled later.



6. Using an 18MM socket, remove the two bolts on each side of the bumper support. Do this on both sides of the vehicle. Set bolts and support aside to be reinstalled later.

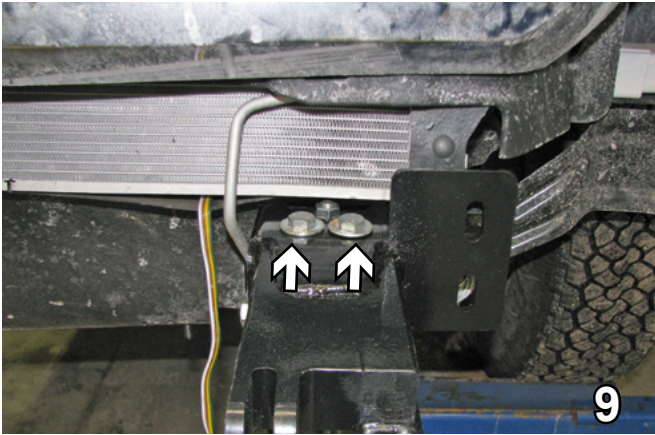


7. On the passenger side, on the back bottom of the lower radiator, remove the push pin from the rubber air dam. Set the pin and the air dam aside to be reinstalled later.

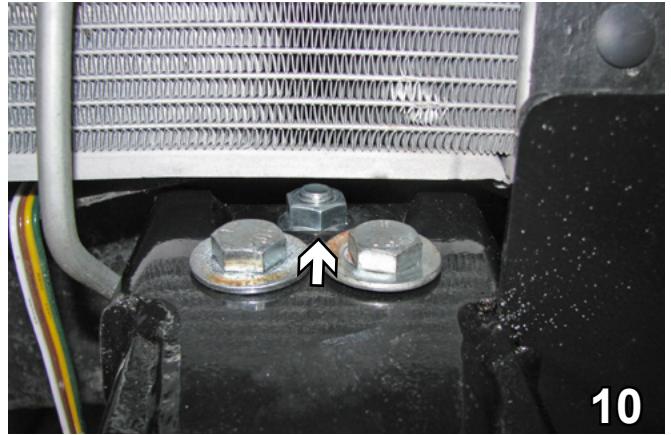


8. Using a 13MM socket remove the three metric bolts from the coolant transfer box on the passenger side to be reinstalled later. Pull the box out of the way so that the side holes can be drilled in step 12 using the baseplate as a template.

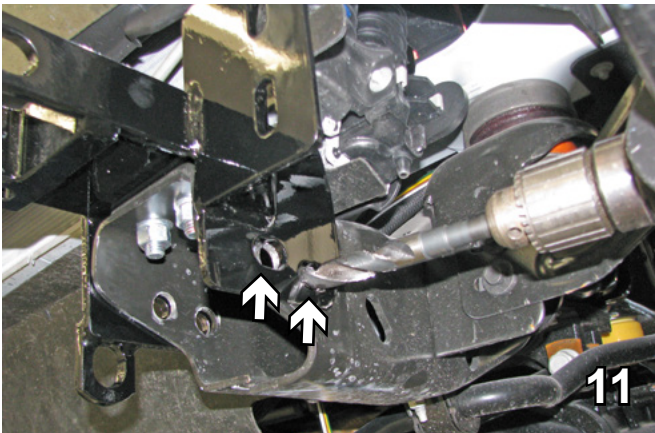
BX2631
2011-15 Ford F350 (Includes Super Duty)
Installation Instructions



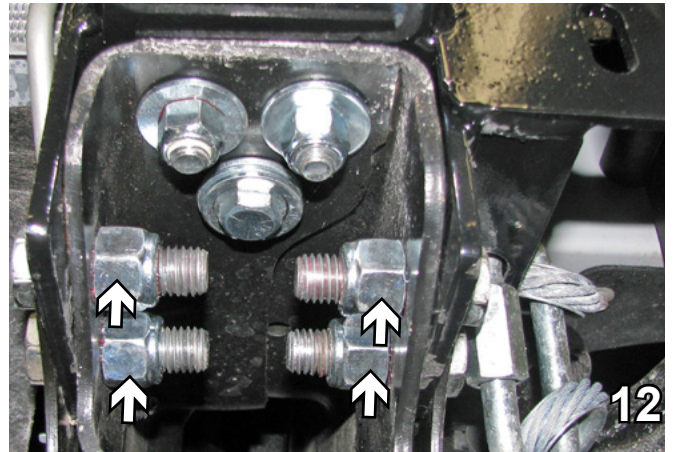
9. Slide the baseplate over the frame rail, tabs to the inside. Align with the top holes. Insert 1/2-13 x 3 1/2" hex bolts with 1/2" flat washers on the top and bottom and 1/2-13 hex nuts in the front holes. Do this on both sides. Tighten with Loctite Red.



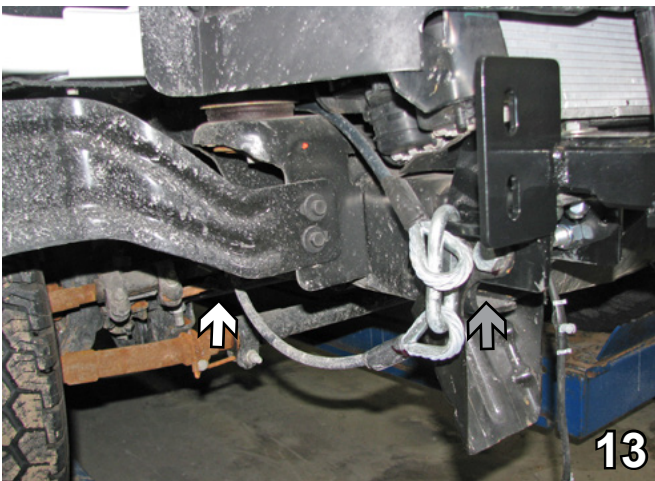
10. Insert 1/2-13 x 2 1/2" hex bolt into the back hole bottom side up with three 1/2" flat washers on the bottom and attaches with a 1/2-13 whiz nut on the top side. Do this on both sides. Tighten with Loctite Red.



11. With the baseplate as a template, use a 5/8" drill bit to ream out the holes on both sides of the frame rail if needed. Do this on both sides of the vehicle.



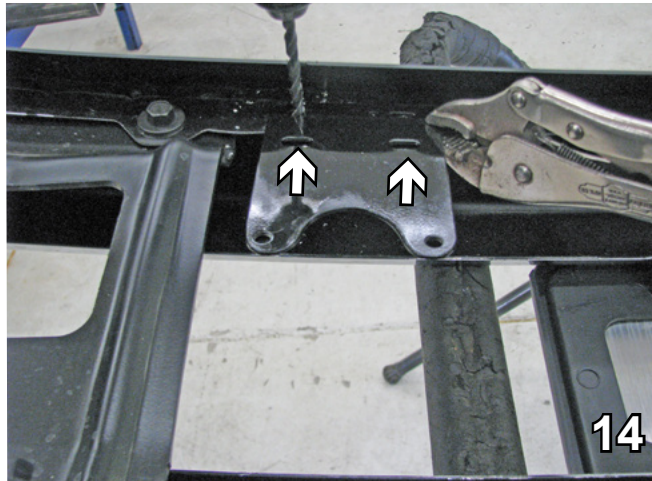
12. Slide the lower support bumper brace (removed in step 7) over the baseplate to align with the reamed holes. The brace may need to be widened to fit. Tighten all four 5/8-11 x 2" bolts attached to 5/8-11 hex nuts on the inside. Use Loctite Red on all bolts. Do this on both sides.



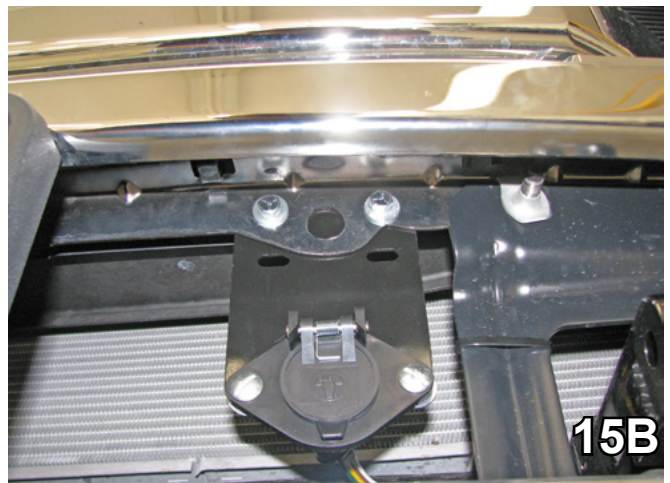
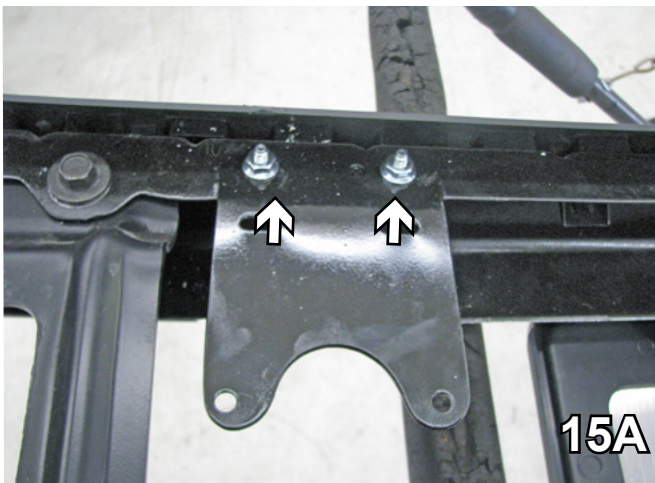
13. Attach the permanent baseplate safety cables to the provided convenience link on the baseplate (gray arrow). The photo above shows the recommended installation of the cables to the frame of vehicle (white arrow). Additional options may interfere with the suggested mounting. In this case, secure the cables to a solid piece of the frame as described in the instructions included with the permanent baseplate safety cables. Be sure the safety cables do not rub against any hoses or moving parts. Do this to both sides of the vehicle.

When using power drills, be aware of the dangers of torque and drill bit length.

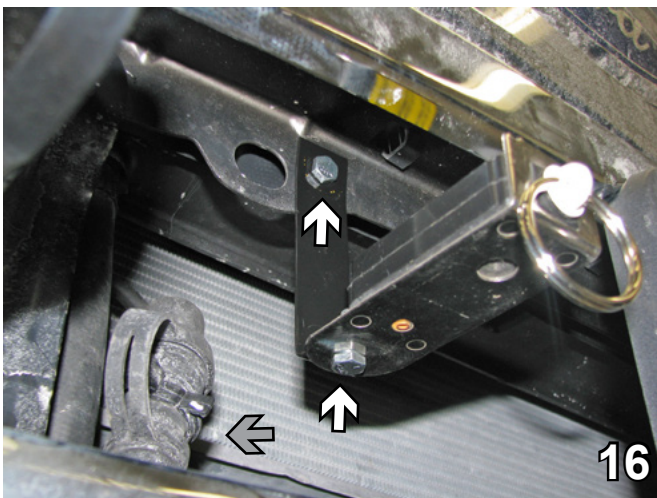
BX2631
2011-15 Ford F350 (Includes Super Duty)
Installation Instructions



14. Place the metal bumper face down. Position the electrical bracket over the two existing holes on the inside top driver's side. Drill out the hole on the left using a 5/16" drill bit.



15. Install 1/4-20 x 3/4" bolts with 1/4" flat washers, 1/4" lock washers and 1/4-20 whiz nuts. Reinstall the air dam, coolant transfer box, Christmas tree pins, heat core plug, bumper, cover, push pins, bolts and reconnect wiring.



16. **Optional:** Install the breakaway bracket in the existing hole on the passenger side next to the license plate. Insert a 1/4-20 x 3/4" hex bolt with 1/4-20 hex nut. Also attach the breakaway to the bracket with a 1/4-20 x 3/4" hex bolt with 1/4-20 hex nut.

BE SURE TO USE LOCTITE® RED ON ALL BOLTS BEFORE TIGHTENING. TIGHTEN ALL BOLTS ACCORDING TO THE TORQUE CHART ON THE FRONT PAGE OF THESE INSTRUCTIONS OR ON PAGE 3 OF THE BASEPLATE TOWING GENERAL INSTRUCTIONS.

BX2631
2011-15 Ford F350 (Includes Super Duty)
Installation Instructions

Do not use the towed vehicle for storing luggage, equipment, etc. This may cause you to exceed the towing capacity of the tow bar, baseplate, and its accessories.

Install the tow bar and safety cables according to the instructions provided in their packages. When demonstrating this to the customer, be sure to give all the contents and packages to the consumer.

Do **NOT** substitute other devices if the tow bar pins and clips are misplaced.



Shown with standard tabs

If the baseplate is in an accident, it must be replaced. DO NOT use it again! An accident can cause unseen damage and using it again could result in more damage or serious injury. DO NOT use the baseplate if it is damaged or missing parts.

Be sure that **ALL** electrical connections are plugged in properly and functioning **BEFORE** installing the fascia.

DEALER or INSTALLER:
Be certain the user receives the instruction sheets for their products.

CUSTOMER SERVICE COMMITMENT

Blue Ox is committed to providing you with exceptional customer care throughout your lifetime with our products. Our team is here to assist you with any questions you may have regarding the performance of your product. Simply call (402) 385-3051 and you can speak with our customer care team.

Additionally, please visit our website to see which rallies our Destination America team will be attending. For a nominal fee, our service technician will service your towing system to ensure it's in proper working condition. Also, as a commitment to our customers, should you visit our factory, you can stay at our full service Blue Ox campground at no charge along with enjoying a factory tour.

Again, thank you for being our customer and for the confidence you have shown in the performance of our products. It is because of customers like you we enjoy the success we have today.



© 2013 Blue Ox
One Mill Road, Industrial Park
Pender, Nebraska 68047
Phone: (402) 385-3051 • Fax: (402) 385-3360
www.blueox.com