



BLUE OX® 2012 Ford Transit Connect XLT Premium Installation Instructions

BX2644

Serial Number

Attachment Tab Height: 16"

Attachment Tab Width: 20"

Please read BOTH these Installation Instructions and the General Instructions prior to installing or operating this equipment.

- Blue Ox® towing products and accessories are intended to be installed by Blue Ox® Dealers who are familiar with our products and have the equipment and knowledge necessary to do "fit work". If needed, Blue Ox® Dealers can be found at www.blueox.com or by contacting our Customer Care Department at (402) 385-3051.
- Many Blue Ox® baseplates are designed to use existing holes and hardware to mount the baseplate to the towed vehicle. Even though bolts are there, do not assume they are adequate for baseplate mounting. Always use the hardware supplied in the hardware kit and existing hardware as specified in the installation instructions.

Bolt Torque Specifications

Torque in Foot-Pounds for Inch Bolts

Bolt Size	Grade 5	Grade 8
1/4"	10	14
5/16"	19	29
3/8"	33	47
7/16"	54	78
1/2"	78	119
5/8"	154	230
3/4"	257	380



If the front of your vehicle looks different than this, please contact us at (402)385-3051.

Reference your vehicle owner's manual for manufacturer's towing specifications.

Bolt Torque Specifications

Torque in Foot-Pounds for Metric Bolts

Bolt Size	Grade 8.8	Grade 10.9
6MM	6	8
8MM	16	22
10MM	31	40
12MM	54	70
14MM	89	117
16MM	161	230
18MM	222	318



WARNING

Failure to read and follow these instructions could result in separation of the towed vehicle from the tow bar, causing property damage, loss of towed vehicle, personal injury or death.

BX2644
2012 Ford Transit Connect XLT Premium
Installation Instructions

Instruction Notes: The fascia is removed and reinstalled for the baseplate installation. Some drilling and trimming is required.

Place all components that are removed on a flat, sturdy surface. All items will be reinstalled unless otherwise noted after the baseplate is installed.

The dimensional variations between otherwise identical vehicles can be considerable. While the baseplate was designed for easy installation, it may be necessary to tailor the baseplate slightly to compensate for vehicle manufacturer's tolerances.

The BX8869 Tail Light Wiring Kit is recommended for this vehicle.



Drill a hole according to the tail
light wiring kit instructions.

NOTICE

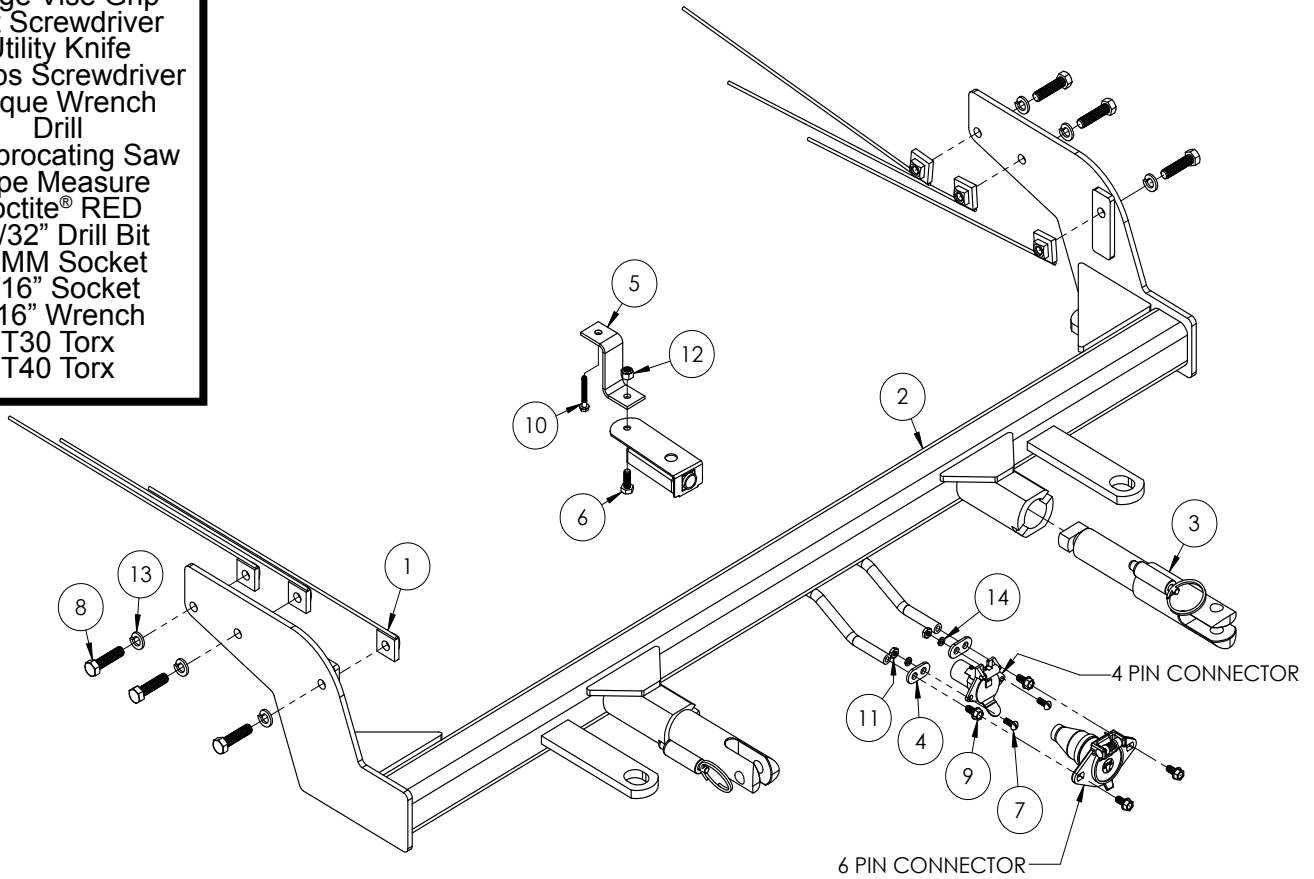
- Handling of some cosmetic parts when installing this product may require the use of protective covers, rags, specialty tools, etc. to prevent damage.
- When using power drills be aware of the dangers of torque and drill bit length.
- When using a reciprocating saw be aware of objects behind the cutting surface.
- Use a good quality paint to spray cut edges of frame to prevent rusting.
- Be sure that **ALL** electrical connections are plugged in and accessories are functioning properly before reinstalling the fascia.
- Do not use the towed vehicle for storing luggage, equipment, etc. This may cause you to exceed the towing capacity of the tow bar, baseplate and its accessories.
- Be sure to use Loctite® Red on all bolts before tightening. Tighten all bolts according to the torque chart provided.
- Dealer or installer be certain the user receives these instruction sheet.
- If the baseplate is in an accident, it must be replaced. **DO NOT** use it again! An accident can cause unseen damage and using it again could result in more damage or serious injury. **DO NOT** use the baseplate if it is damaged or missing parts.

BX2644

2012 Ford Transit Connect XLT Premium Installation Instructions

Tools Required

Large Vise Grip
 Flat Screwdriver
 Utility Knife
 Phillips Screwdriver
 Torque Wrench
 Drill
 Reciprocating Saw
 Tape Measure
 Loctite® RED
 13/32" Drill Bit
 10MM Socket
 9/16" Socket
 9/16" Wrench
 T30 Torx
 T40 Torx

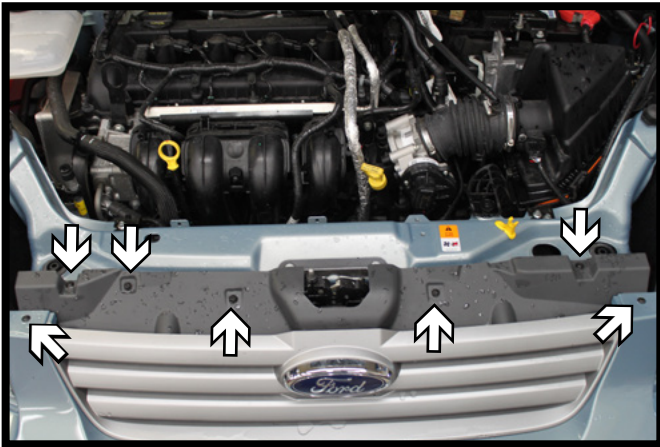


Item No.	Part No.	Description	Qty.
1	61-5208	3/8"-16 Nut Plate w/ 14" Wire	6
2	61-7188	BX2644 Baseplate	1
3	62-3469	Attachment Tab Assembly with Hole	2
4	101-5822	4 Way Connector Adapter	2
5	102-7056	Breakaway Bracket	1
6	201-0050	1/4"-20 x 3/4" Hex Head Bolt, Grade 5, ZP	1
7	201-0192	#10-32 x 1/2" Round Slotted Head Screw	2
8	201-0440	3/8"-16 x 1-1/2" Hex Head Bolt, Grade 5, ZP	6
9	201-0553	1/4"-20 x 1/2" Hex Wshd Bolt Type F TCS, ZP	2
10	201-0654	#10-16 x 1" Self Drilling Screw, ZP	1
11	202-0047	#10-32 Hex Nut	2
12	202-0102	1/4"-20 Hex Nylon Nut, ZP	1
13	203-0010	3/8" Lock Washer, ZP	6
14	203-0054	#10 Lock Washer, ZP	2
15	226-0046(not shown)	Class III Safety Cables	2
16	229-0359(not shown)	3/8" Quicklink, ZP	2
17	290-0437(not shown)	Black Cap Plug Receiver	2

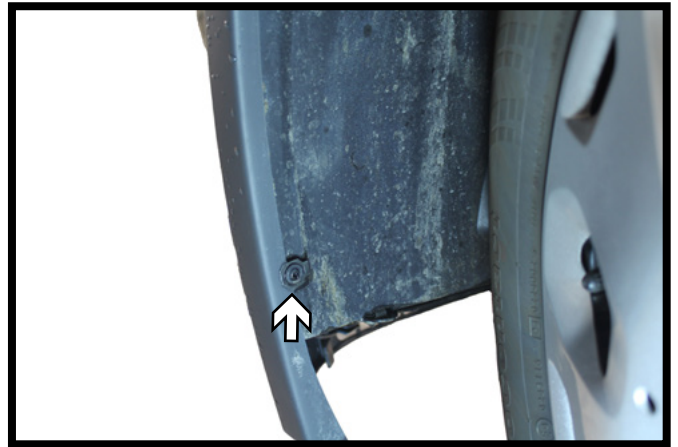
Important:

Use only genuine factory replacement parts on your baseplate. Do **NOT** substitute homemade or non-typical parts. If a bolt is lost or in need of replacement, for your safety and the preservation of your baseplate, be sure to use a replacement bolt of the same grade (In most cases it will be Grade 5, please reference the parts list above). Replacement parts may be ordered through your nearest Blue Ox® Dealer or Distributor. Failing to follow and/or altering these installation instructions in either installation or required equipment will void the manufacturer's warranty. Towing behind a non-motorized vehicle will void the warranty.

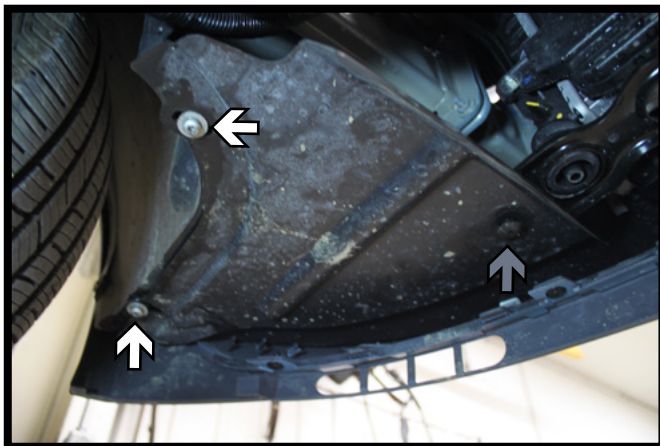
BX2644
2012 Ford Transit Connect XLT Premium
Installation Instructions



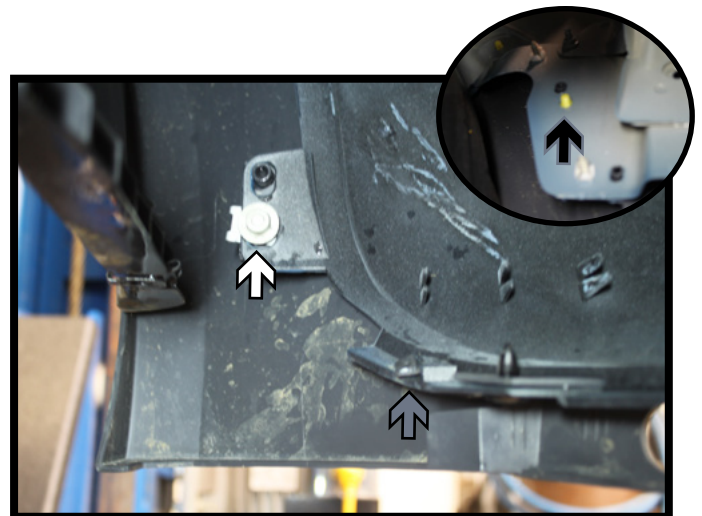
1. Using a Phillips screwdriver, remove the seven (7) screws from the top edge of the fascia.



2. Using a Philips screwdriver, remove the screw from the outer edge of the wheel well. Do this on both sides of the vehicle.

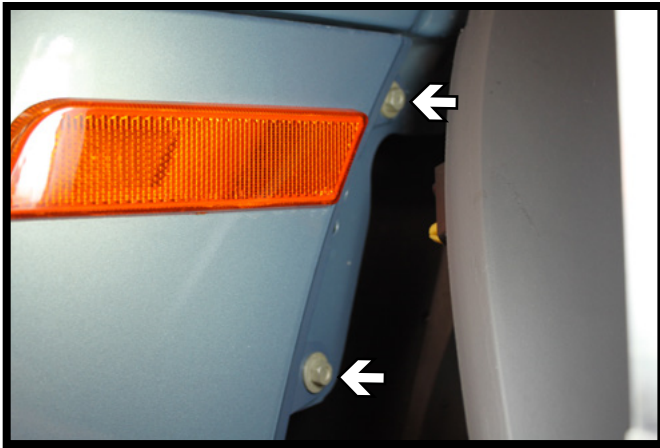


3. On the underside of the fascia on the driver side only, using a T30 Torx, remove the two (2) screws (white). Then remove the push pin (gray).



4. Using a 10MM socket, remove the screw from the inside corner of the fascia (white). Then release the clip below (gray). Further up on the inside of the fascia above the screw, release the yellow clip holding on the fender flare (black). Do this on both sides of the vehicle.

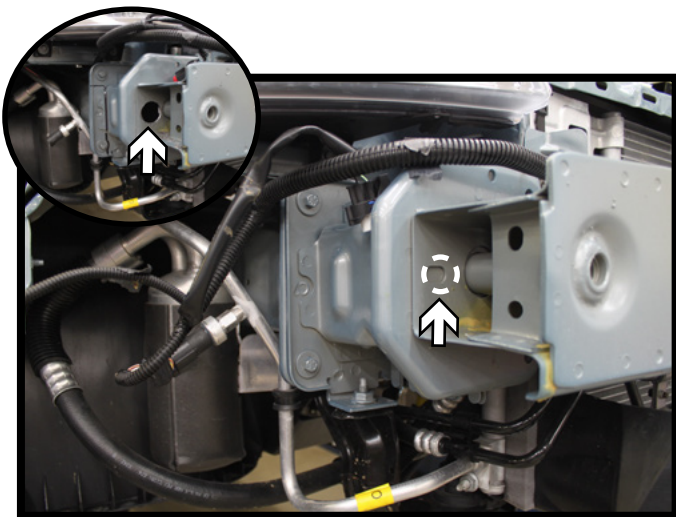
BX2644
2012 Ford Transit Connect XLT Premium
Installation Instructions



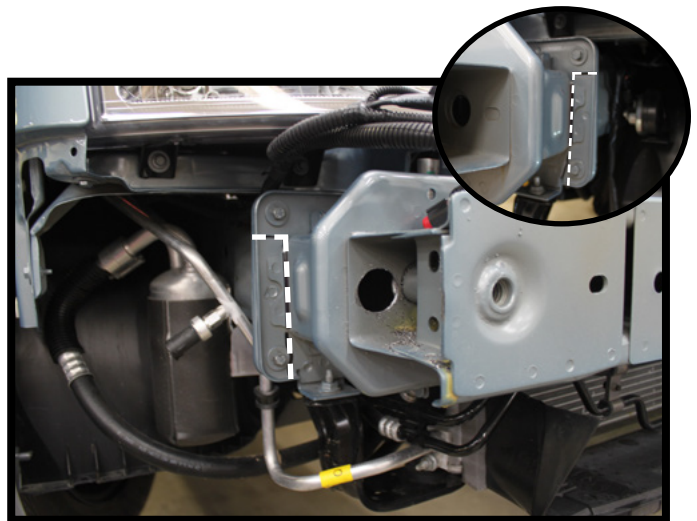
5. Pull the fender flare away the vehicle. Then using a 10MM socket, remove the two (2) screws from the behind the fender flare. Do this on both sides of the vehicle.



6. Remove the two (2) plastic covers. Then using a T40 Torx, remove the two (2) screws from the fascia. Remove the fascia from the vehicle and set aside.

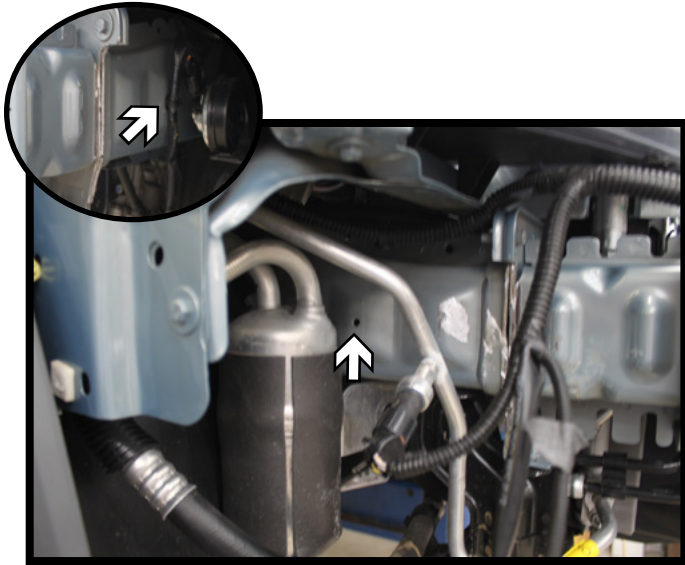


7. On the passenger side only, using a 1-1/4" hole saw, drill an access hole into the frame extension.



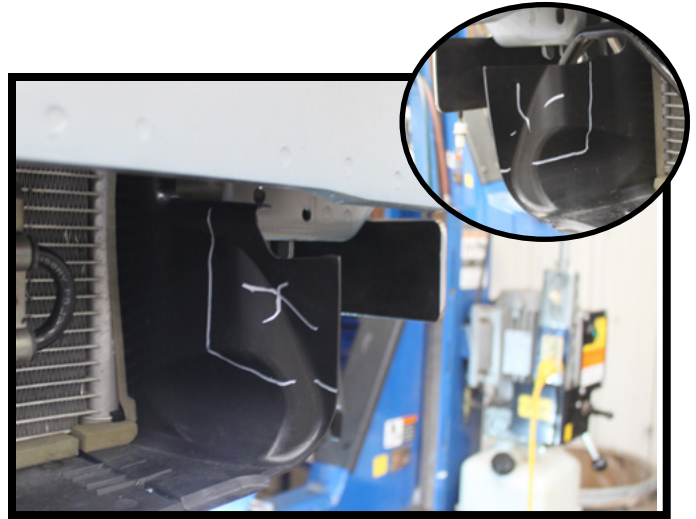
8. Using a reciprocating saw, trim the frame extension on both the driver and passenger sides as shown.

BX2644
2012 Ford Transit Connect XLT Premium
Installation Instructions

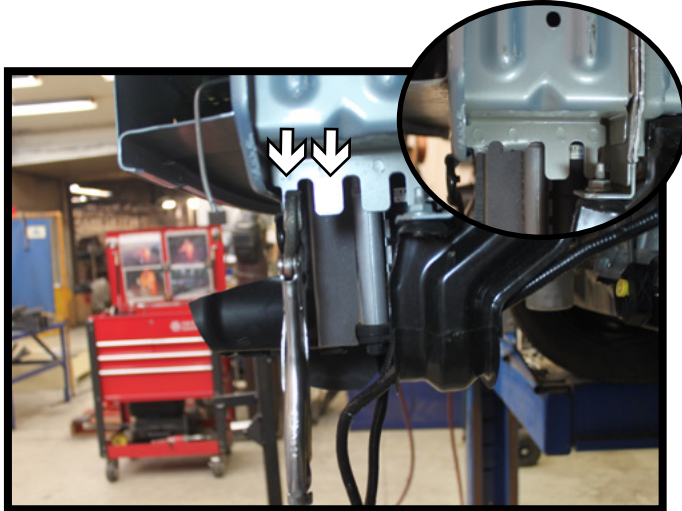


9. Using a 13/32" drill bit, drill out the existing hole in the frame. Do this on both sides of the vehicle.

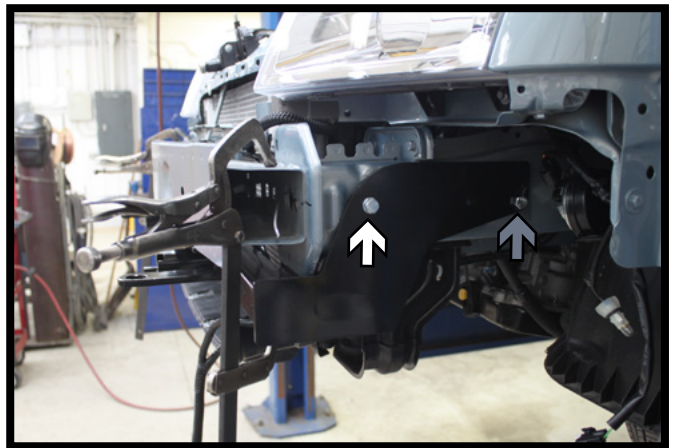
Note: On the driver side only, remove the wiring clip to access the existing hole.



10. Trim the air shrouds on both sides of the vehicle as shown for baseplate clearance.

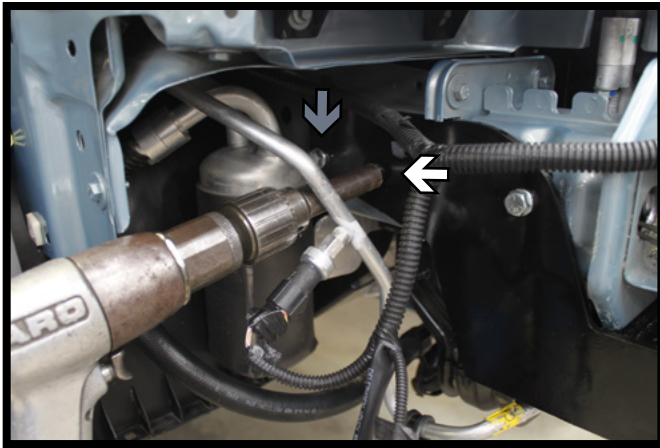


11. Bend the first two (2) tabs of the frame back at a 90° angle for baseplate clearance. Do this on both sides of the vehicle.




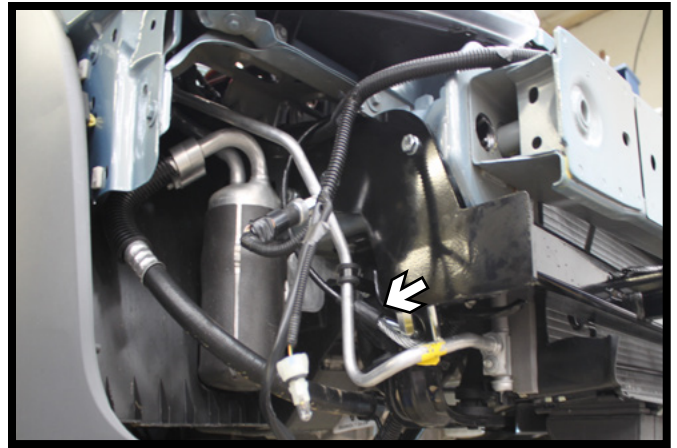
12. Position the baseplate onto the vehicle, temporarily pinning the back holes with a 3/8" bolt (gray). Level and clamp the baseplate into position. Using a 13/32" drill bit, drill the front hole thru the frame. Install a 3/8"-16 x 1-1/2" bolt with a 3/8" lock washer into the hole and a 3/8" nut plate on the inside of the frame (white). Do this on both sides of the vehicle. Tighten both fasteners down.

BX2644
2012 Ford Transit Connect XLT Premium
Installation Instructions

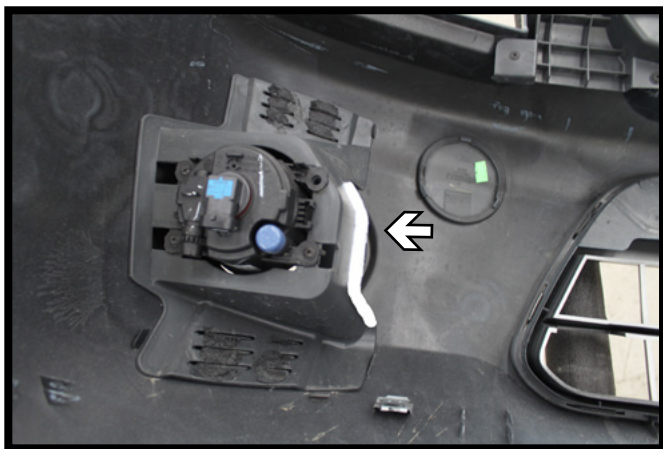


13. Using a 13/32" drill bit, drill the middle hole thru the frame. Install a 3/8"-16 x 1-1/2" bolt with a 3/8" lock washer into the hole and a 3/8" nut plate on the inside of the frame (white). Remove the back bolt, ream out the hole if necessary, reinstall the bolt with a 3/8" lock washer and a 3/8" nut plate on the inside of the frame (gray). Do this on both sides of the vehicle. Tighten all fasteners down.

 Caution: When drilling on the passenger side be aware of the condenser line.



14. Attach the permanent baseplate safety cables to the provided convenience link on the baseplate. The photo above shows the recommended installation of the cables to frame of vehicle. Additional options may interfere with suggested mounting; in this case, secure the cables to a solid piece of the frame as described in the instructions included with the permanent baseplate safety cables. Be sure the safety cables do not rub against any hoses or moving parts. Do this on **BOTH** sides of the vehicle.



15. On the backside of the fascia, trim the edge of the fog lamp housing as shown. Do this on both sides of the fascia. Reinstall the fascia and plastic covers.

BX2644
2012 Ford Transit Connect XLT Premium
Installation Instructions

CUSTOMER SERVICE COMMITMENT

Blue Ox® is committed to providing you with exceptional customer care throughout your lifetime with our products. Our team is here to assist you with any questions you may have regarding the performance of your product. Simply call (402) 385-3051 and you can speak with our customer care team.

Additionally, please visit our website to see which rallies our Destination America team will be attending. For a nominal fee, our service technician will service your towing system to ensure it's in proper working condition. Also, as a commitment to our customers, should you visit our factory, you can stay at our full service Blue Ox® campground at no charge along with enjoying a factory tour.

Again, thank you for being our customer and for the confidence you have shown in the performance of our products. It is because of customers like you we enjoy the success we have today.

© 2012 Blue Ox
One Mill Road, Industrial Park
Pender, Nebraska 68047
Phone: (402) 385-3051
Fax: (402) 385-3360
www.blueox.com