



BX2701 Installation Instructions 1995-97 Kia Sephia

Utilization of Blue Ox baseplates with any tow bar not approved by Automatic Equipment Mfg. Company invalidates the limited warranty.

Installation of this baseplate requires removing the vehicle's tie down mounts and the plastic shields near the tie down brackets. These shields may have to be trimmed slightly.

1. Read the General Instruction Sheet included with this baseplate.
2. The baseplate bolts in place of the tie down brackets and to the engine support using eleven bolts supplied with the baseplate.
3. There are two plastic shields which cover the area around the tie brackets. Using a 10mm wrench, remove the bolts that hold these shields on and set the shields aside. Note that the tie downs are bolted to the car by five bolts on each side of the car. On the driver's side there is a plastic tank near the tie down which interferes with access to the bolts. Remove the two bolts which mount the tank to the frame and move the tank out of the way.
4. Remove the ten bolts holding the tie down mounts to the car. Set the mounts and bolts aside, they will not be used to install the baseplate. Note the engine support in the middle of the car. Just behind the two bolts which attach it to the frame there is a bump with a hole in the bottom. Drill this hole out to 17/32".
5. Hold the baseplate up and align the end plates with the tie down mount bolts. Start the 8mm bolts, lock washers, and flat washers into the frame. Start the 1/2" bolt through the center mount and into the engine support. Use the nut wire on the top of the engine support. When all bolts align, apply Loctite and tighten completely.
6. Replace the tank and the shields. The shields may have to be trimmed to accommodate the baseplate.
7. The dimensional variations between otherwise identical cars can be considerable. While the location and size of the holes in the baseplate were designed to allow for easy installation, it may be necessary to file a hole slightly to allow a bolt to clear.
8. Install the tow bar and safety cables according to the instructions included in their packages.
9. Do not substitute other devices if the tow bar pin and clip are lost.
10. DEALER OR INSTALLER: BE CERTAIN THE USER RECEIVES THE INSTRUCTION SHEET.

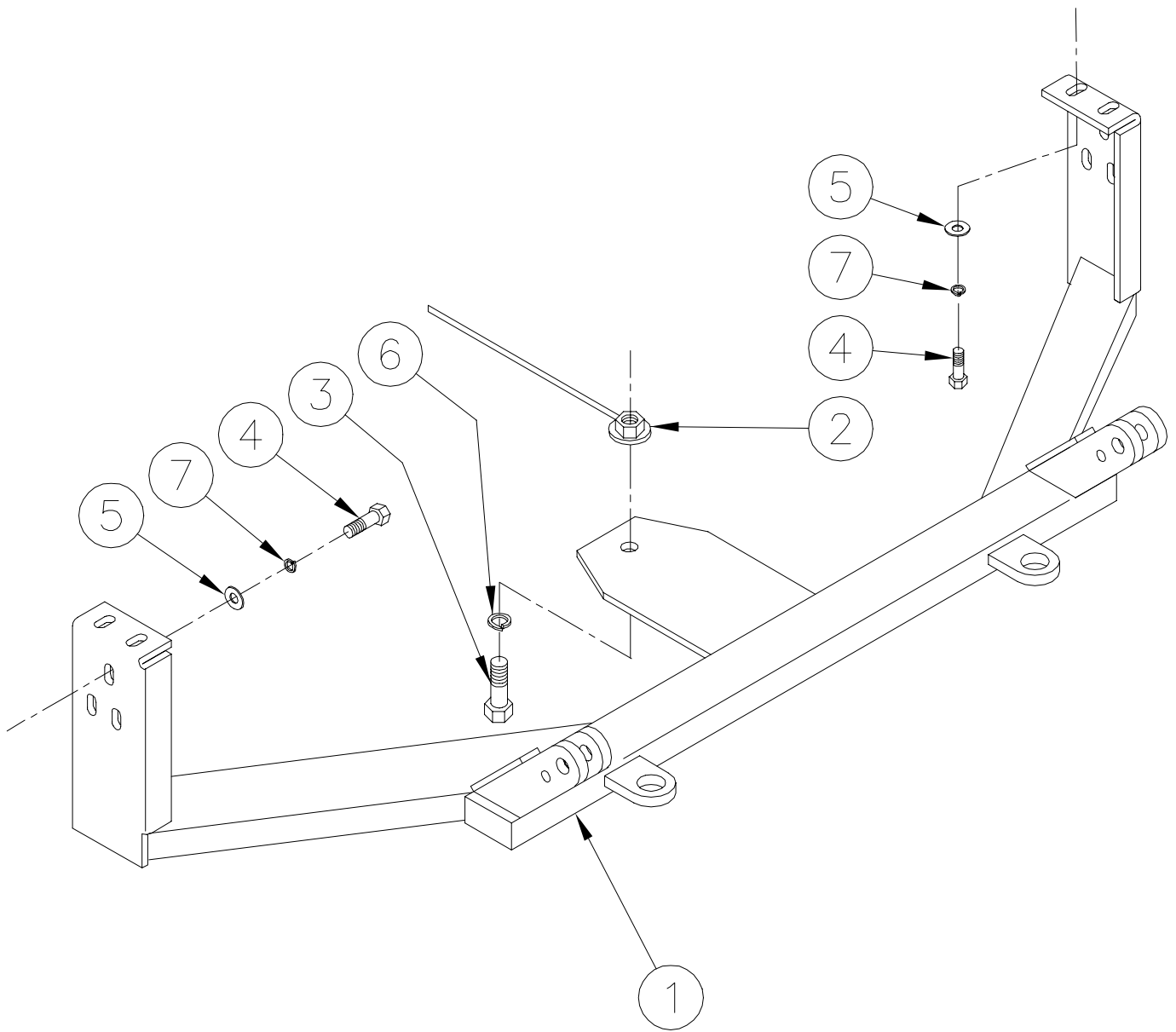
Tools Required

10mm Wrench
17/32" Drill Bit
Utility Knife

12mm Wrench
Drill
Loctite Blue

13mm Wrench
3/4" Wrench

Automatic



Parts List

| Ref. No. | Qty. | Part No. | Description |
|----------|------|----------|-----------------------------------|
| 1 | 1 | 61-4859 | Weldment, Baseplate, BX2701 |
| 2 | 1 | 61-4029 | Weldment, 1/2" Nut Wire |
| 3 | 1 | 201-0051 | 1/2-13 x 1 1/2 Hex Bolt, Grade 5 |
| 4 | 10 | 201-0446 | 8mm-1.25 x 30mm Hex Bolt, Grd 8.8 |
| 5 | 10 | 203-0002 | 5/16 Flat Washer |
| 6 | 1 | 203-0012 | 1/2 Lock Washer |
| 7 | 10 | 203-0102 | 8mm Lock Washer |