



**BX2705 Installation Instructions
2001 Kia Rio**

Serial No.

The front fascia and head light assembly is removed for baseplate installation. Holes need to be drilled. The BX8869 is available for the base plate. The attachment tabs are 24 inches center to center and 12 inches of height.



1. Remove three metric bolts from head light assembly with 10MM socket, pull forward, unplug, and set aside on both sides.



2. Just behind head light assembly is a metric nut to be removed with the 10MM socket. Also remove 7 push pins for top side of fascia.



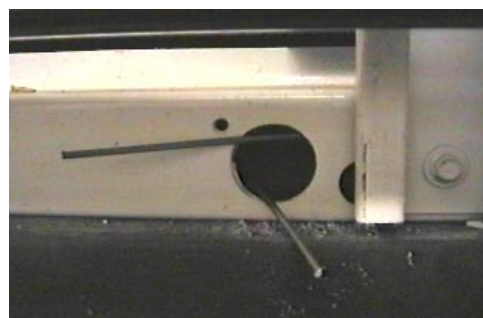
3. Using the phillips screw driver remove screw from each side of fascia corner. Remove four push pins just forward of front tire and four from the top side of fascia opening.



4. Drill out existing hole with the 13/32 drill bit.



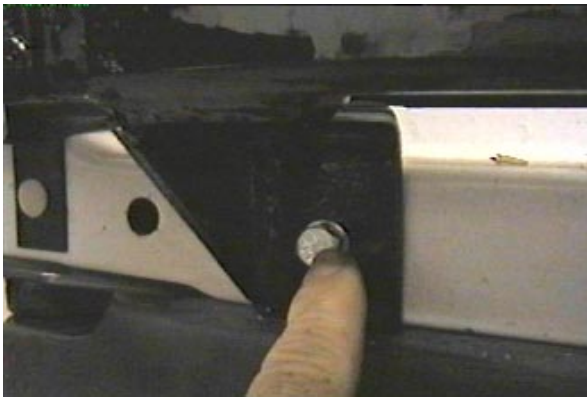
5. Hold baseplate and spacer plate to align with this drilled hole, insert items 5 and 7. Align item 2 with item 5 from inside frame end, both sides, do not tighten.



5. With the 1 1/4 inch hole saw cut a hole in the cross member front to gain access to interior.



Strong As An Ox™



7. Using the baseplate as a template drill a 13/32" hole into cross member for lower supports. Insert items 4 and 7 into drill hole. Then insert item 2 into 1 1/4" hole to align with item 4 according to drawing on last page. **Be sure and use loctite on all bolts before tightening.**



8. Drill all remaining holes on the ends of baseplate, with the 13/32" drill bit. Insert items 5, 6, 7, and 8 into these drilled holes, tighten all bolts. **Be sure and use loctite on all bolts before tightening.**

9. Reinstall fascia, head light assemblies, and be sure all electrical components are reconnected.

10. The dimensional variations between otherwise identical cars can be considerable. While the location and size of the holes in the baseplate were designed to allow for easy installation, it may be necessary to file a hole slightly to allow a bolt to clear.

11. Install the tow bar and safety cables according to the instructions included in their packages.

12. Do **not** substitute other devices if the tow bar pin and clip are lost.

13. **DEALER OR INSTALLER: BE CERTAIN THE USER RECEIVES THE INSTRUCTION SHEET.**



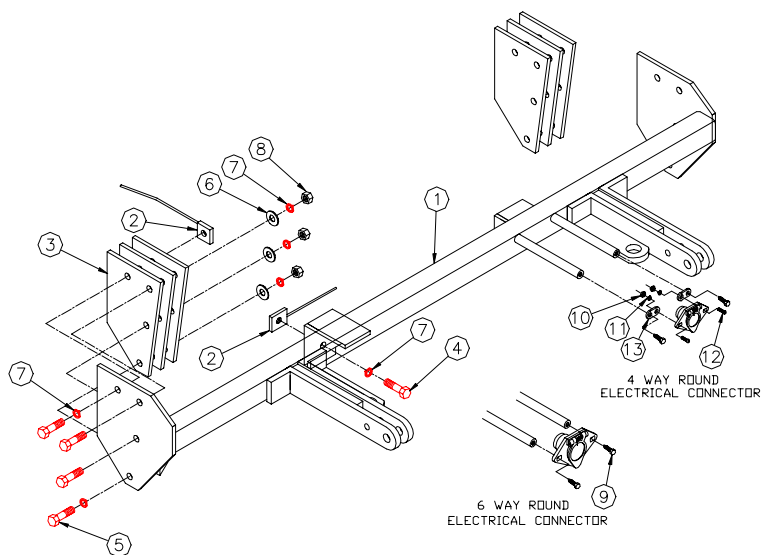


Tools Required

10MM Socket	Loctite Blue	13/32" Drill Bit
9/16" Socket	Vise Grips	1 1/4" Hole Saw
Phillips Screw Driver	1/2" Transfer Punch	

Parts List

Ref. No.	Qty.	Part No.	Description
1	1	61-5675	Weldment, Base Plate, BX2705
2	4	61-5208	Weldment, 3/8-16, Nut Plate
3	6	101-6217	Spacer, Plate, BX2705
4	2	201-0440	3/8-16 x 1 1/2 Hex Bolt, Grd. 5, ZP
5	8	201-0332	3/8-16 x 2 1/4 Hex Bolt, Grd. 5, ZP
6	6	203-0003	3/8 Flat Washer, ZP
7	10	203-0010	3/8 Lock Washer, Z
8	6	202-0003	3/8-16 Hex Nut, ZP
9	2	201-0553	1/4-20 x 1/2 Hx. Wshd, Type F Screw
10	2	202-0047	#10-32 Hex Nut
11	2	203-0054	#10 Lock Washer
12	2	201-0192	#10-32 x 1/2 Slot, Rd. Hd. Screw
13	2	101-5822	Adapter, 4 Way Connector



IMPORTANT: Use only genuine factory replacement parts on your Base Plate. Do not substitute homemade or nontypical parts. If a bolt is lost or in need of replacement, for your safety and the preservation of your Base Plate, be sure to use a replacement bolt of the same grade (Usually Grade 5, refer to parts list). Repair parts may be ordered through your nearest **Blue Ox** dealer or distributor.