

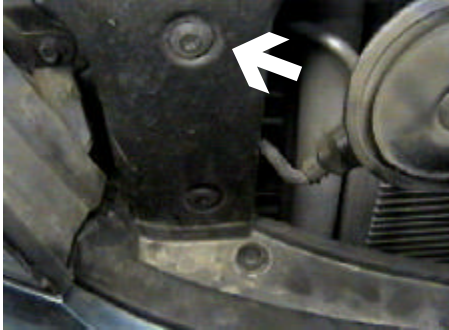


Strong As An Ox™

## BX2707 Installation Instructions 2003 Kia Sorento LX

Serial No.

The headlight assembly, front fascia, horn bracket and windshield washer reservoir are removed for baseplate installation. Drilling is required. Trimming of air dam on metal bumper is required. The BX8869 is available for the vehicle. Attachment Tabs are 24 inches center to center and a height of 13 1/2 inches.



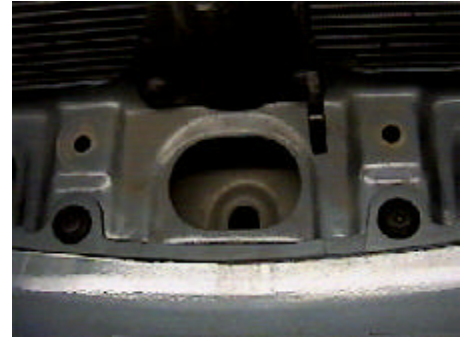
1. Remove the two phillips push pins from black plastic on both sides. remove six phillips push pins on plastic covering metal bumper.



2. Remove three metric bolts from headlight assembly with the 10MM socket, pull forward, unplug electrical and set aside, both sides.



3. Just under headlight assembly are phillips push pins to remove, both sides. Lift vertical black plastic, remove plastic over the top of metal bumper and set aside.



4. Just under plastic, in step three, are six phillips push pins to remove.



5. Remove one metric bolt just behind head light assembly using the 7MM socket, both sides.



6. Remove two phillips screws from the bottom middle of fascia.



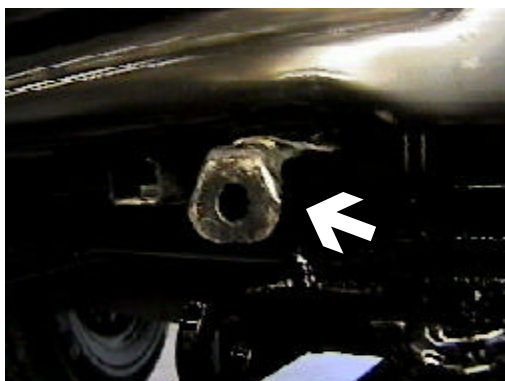
Strong As An Ox™



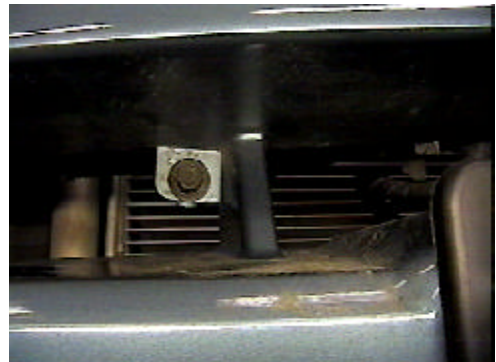
7. Just forward of front tire are two phillips push pins to remove, both sides.



9. Just forward and above front tire on fascia's corner is one phillips screw to remove, both sides. Pull fascia corners down, then pull fascia forward and set aside.



11. On the bottom of metal bumper are two brackets for the fascia, bend brackets forward. This will open up area for baseplate installation.



8. Using the 10MM socket, remove two metric bolts in fascia opening.



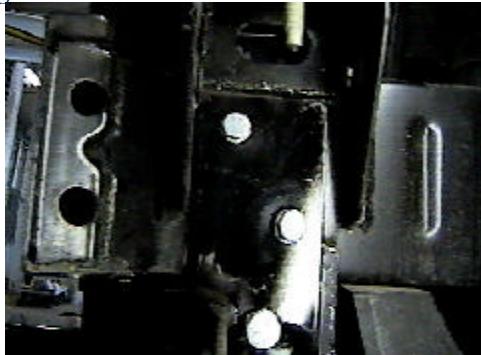
10. Remove six metric bolts on forward belly pan using the 12MM socket and set aside.



12. Align lower hole on baseplate ends, with large hole just behind tow hook bracket and secure baseplate to tow hook bracket with vise grips. Bend the fascia brackets, in step 11, back to their original position.



Strong As An Ox™



**13.** While maintaining a level position with the attachment tabs, drill the two top holes using the baseplate as a template, using the 13/32" drill bit, both sides. Insert the nut plate into the opening on the front of the metal bumper to align with drilled holes in frame. Slide spacer plate between frame and baseplate's upper hole from the top, both sides. Then install and tighten the 3/8" lock washer and bolt, both sides. **Be sure and use loctite on all bolts before tightening. Tighten all bolts according to torque chart on the General Instruction Sheet.**

**14.** Insert the 1/2 x 4" bolt through baseplate's lower hole, through tow hook bracket and insert spacer tube into opening around 1/2" bolt. Install 1/2" flat washer, 1/2" lock washers, 1/2" hex nut on both sides and tighten. **Be sure and use loctite on all bolts before tightening. Tighten all bolts according to torque chart on the General Instruction Sheet.**



**15.** While holding belly pan just below original position, mark areas to be cut out, see photos above. If measuring from bolt holes, out 1" should be the approximate location to start cutting down 4" and to the side 5 3/4" on both sides using the hack saw. It will be necessary to cut an opening between the two holes on the front of the belly pan. Reinstall belly pan.

**16.** Reinstall fascia components and head light assemblies. **Be sure all electrical connections are plugged in properly.**

**17.** The dimensional variations between otherwise identical cars can be considerable. While the location and size of the holes in the baseplate were designed to allow for easy installation, it may be necessary to file a hole slightly to allow a bolt to clear.

**18.** Install the tow bar and safety cables according to the instructions included in their packages.

**19.** Do **not** substitute other devices if the tow bar pin and clip are lost.

**20. DEALER OR INSTALLER: BE CERTAIN THE USER RECEIVES THE INSTRUCTION SHEET.**

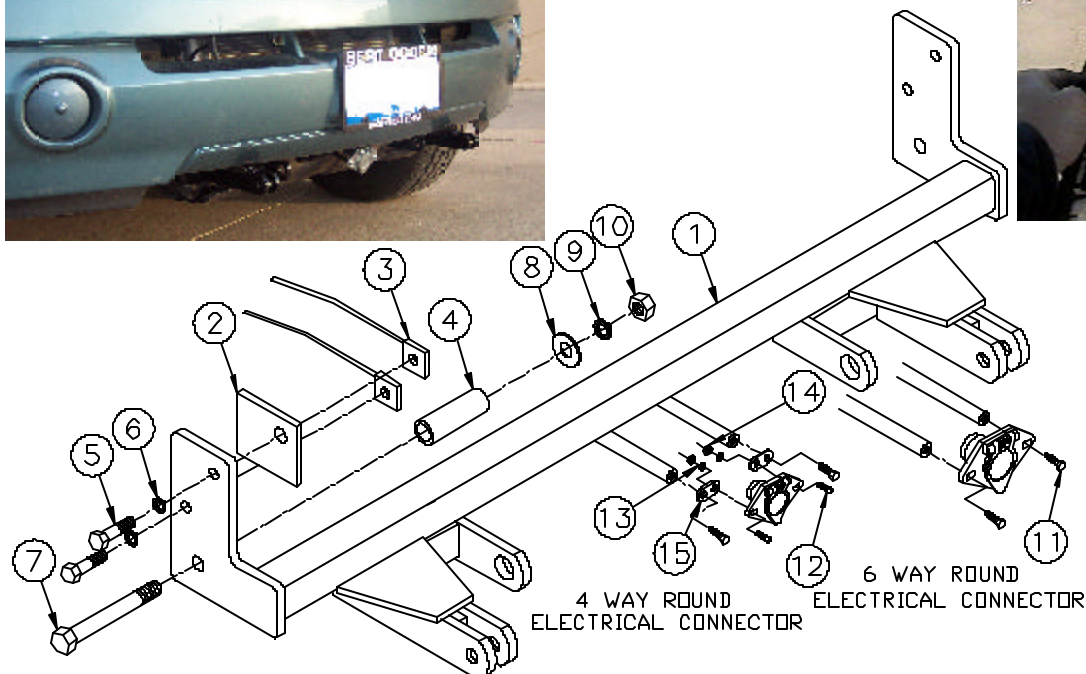
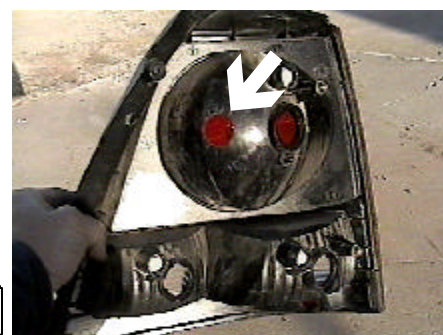


## Tools Required

10MM Socket	13/32" Drill Bit	9/16" Socket
12MM Socket	Loctite	3/4" Socket
Phillips Screw Driver	Reciprocating Saw	

## Parts List

Ref. No.	Qty.	Part No.	Description
1	1	61-5892	Weldment, Base Plate, BX2707
2	2	102-6426	Spacer Plate, BX2707
3	4	61-5208	3/8" Nut Plate, with Wire
4	2	107-2580	Spacer Tube, BX2707
5	4	201-0440	3/8-16 x 1 1/2 Bolt, Grd. 5, ZP
6	4	203-0010	3/8 Lock Washer, ZP
7	2	201-0581	1/2-13 x 4 Bolt, Grd. 5, ZP
8	2	203-0005	1/2 Flat Washer, ZP
9	2	203-0012	1/2 Lock Washer, ZP
10	2	202-0005	1/2-13 Hex Nut, ZP
11	2	201-0553	1/4-20 x 1/2 Hx. Wshd, Type F Screw
12	2	201-0192	#10-32 x 1/2 Slot, Rd. Hd. Screw
13	2	203-0054	#10 Lock Washer
14	2	202-0047	#10-32 Hex Nut
15	2	101-5822	Adapter, 4 Way Connector



*Location for the Bx8869 on driver's side tail light assembly.*

**IMPORTANT!** Use only genuine factory replacement parts on your Base Plate. Do not substitute homemade or nontypical parts. If a bolt is lost or in need of replacement, for your safety and the preservation of your Base Plate, be sure to use a replacement bolt of the same grade (Usually Grade 5, refer to parts list). Repair parts may be ordered through your nearest **Blue Ox** dealer or distributor.