



Strong As An Ox™

**BX2903 Installation Instructions
1997 - 2001 Lexus, V-6/ 3.0L**

Serial No.

The front fascia, blinker assembly, and bumper are removed for baseplate installation. Holes need to be drilled. The attachment tabs are 24 inches center to center and 13 1/2 inches height.



1. Remove the ten push pins from the black plastic just above grill and set aside. Also remove two push pins from under metal bumper.
2. With the phillips screw driver remove one screw each side, pull blinker assembly forward, unplug, and set aside.



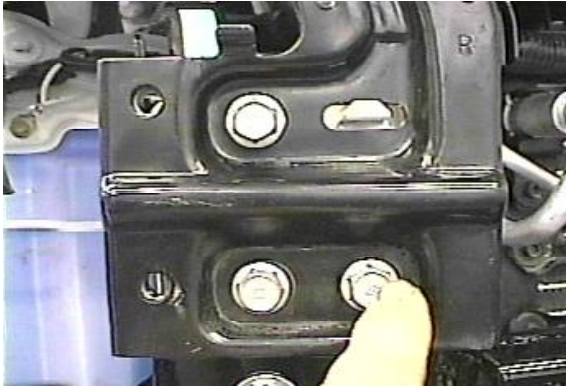
3. Just under blinker assembly, remove a metric nut using the 10MM socket, both sides.
4. Remove the six metric bolts from the underside of fascia with the 10MM socket or phillips screw driver.



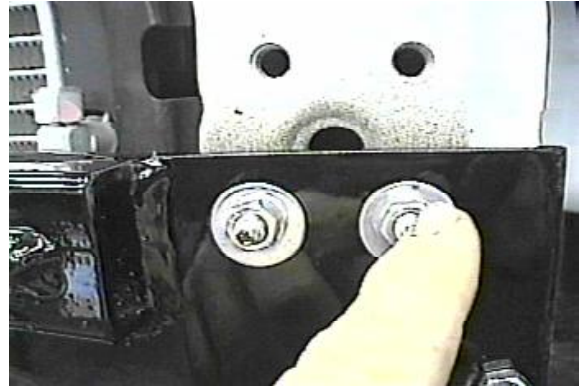
5. Remove metric bolt from outside corner of fascia and behind wheel well plastic with 10MM socket. Pull fascia forward and set aside.
6. Remove metal bumper bolts with a 14MM socket, set bumper aside.



Strong As An Ox™



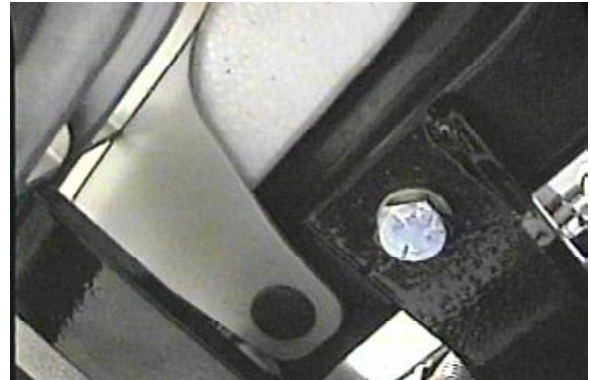
7. Loosen the bumper bracket bolts with the 14MM socket. Insert baseplate end under bumper brackets and on existing metric studs, both sides.



8. Using items 9, 10, and 11 bolt baseplate to frame, do not tighten. **Be sure and use loctite on all bolts before tightening.**



9. Using the baseplate as a template drill a 13/32" hole, both sides. Insert items 5, 6, 7, and 8 as shown in the photo above, tighten all bolts. **Be sure and use loctite on all bolts before tightening.**



10. Reinstall the metal bumper and drill the two 17/32" holes on the bottom side of the metal bumper using the baseplate as a template. Insert item 2 into end of metal bumper to align with drilled holes and fasten with items 3 and 4. **Be sure and use loctite on all bolts before tightening.**

11. Install fascia, blinker assembly, and black plastic above grill.

12. The dimensional variations between otherwise identical cars can be considerable. While the location and size of the holes in the baseplate were designed to allow for easy installation, it may be necessary to file a hole slightly to allow a bolt to clear.

13. Install the tow bar and safety cables according to the instructions included in their packages.

14. Do **not** substitute other devices if the tow bar pin and clip are lost.

15. **DEALER OR INSTALLER: BE CERTAIN THE USER RECEIVES THE INSTRUCTION SHEET.**



Tools Required

14MM Socket
10MM Socket
Vise Grips

Loctite Blue
3/4" Socket
9/16" Socket

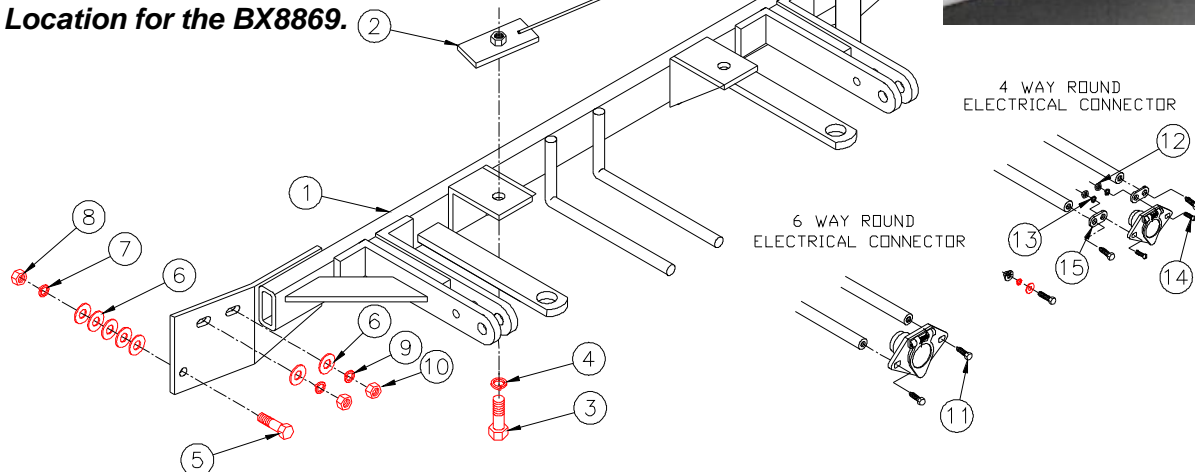
13/32" Drill Bit
17/32" Drill Bit
Phillip Screw Driver

Parts List

Ref. No.	Qty.	Part No.	Description
1	1	61-5640	Weldment, Base Plate, BX2903
2	2	61-5342	Weldment, 1/2-13, Nut Plate, with Wire
3	2	201-0011	1/2-13 x 1 1/4 Hex Bolt, Grd. 5, ZP
4	2	203-0012	1/2 Lock Washer, ZP
5	2	201-0440	3/8-16 x 1 1/2 Hex Bolt, Grd. 5, ZP
6	14	203-0003	3/8 Flat Washer, ZP
7	2	203-0010	3/8 Lock Washer, ZP
8	2	202-0003	3/8-16 Hex Nut, ZP
9	4	203-0102	8MM Lock Washer, ZP
10	4	202-0118	8MM-1.25, Hex Nut, ZP
11	2	201-0553	1/4-20 x 1/2 Hx. Wshd, Type F Screw
12	2	202-0047	#10-32 Hex Nut
13	2	203-0054	#10 Lock Washer
14	2	201-0192	#10-32 x 1/2 Slot, Rd. Hd. Screw
15	2	101-5822	Adapter, 4 Way Connector
	2	226-0046	Baseplate Safety cable, 36" CL III (Not Shown)
	4	229-0359	Quicklink, 3/8, ZP (Not Shown)



Location for the BX8869.



IMPORTANT: Use only genuine factory replacement parts on your Base Plate. Do not substitute homemade or nontypical parts. If a bolt is lost or in need of replacement, for your safety and the preservation of your Base Plate, be sure to use a replacement bolt of the same grade (Usually Grade 5, refer to parts list). Repair parts may be ordered through your nearest **Blue Ox** dealer or distributor.

© 2001, 10 Blue Ox Division, Automatic Equipment Mfg. Co. • One Mill Road, Industrial Par

Pender, Nebraska 68047 • Phone 402-385-3051 • Fax 402-385-3360 • www.blueox.com

Page 3 of 3 292-5882 Rev. B 7/21/10

Go RVing
Life's A Trip