

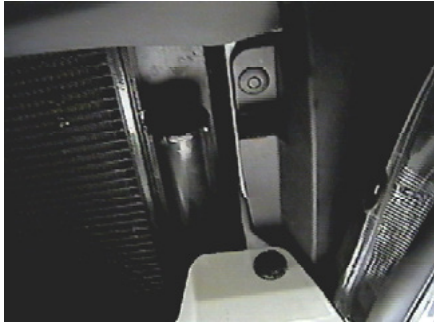


BX2906 Installation Instructions 2004 Lexus RX330

Serial No.

Strong As An Ox™

The fascia and windshield reservoir are removed for baseplate installation. Drilling is necessary. Trimming of the fascia is needed. Only the BX8847 is available for this vehicle. Attachment tabs are 19 inches center to center and a height of 17 1/2 inches.



1. Remove the three push pins at the top of the fascia.



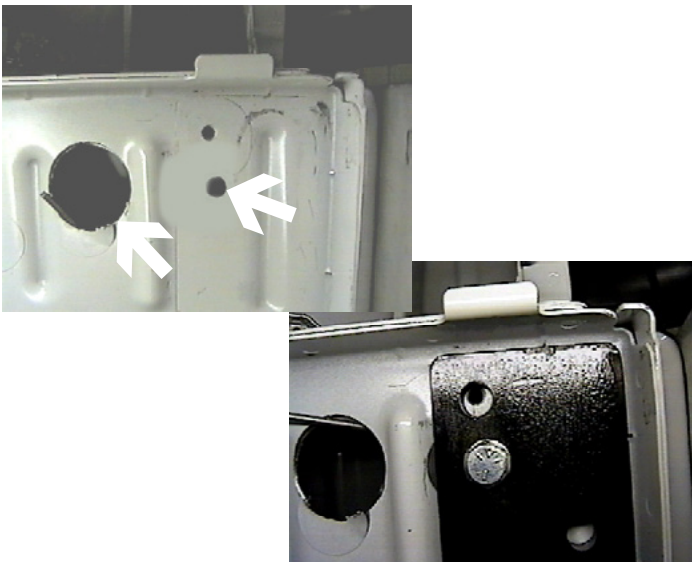
3. Just forward of front tire, on fascia's corner, remove one metric bolt using the 10MM socket. Pull fascia forward and unplug electrical connections. Some models may have headlight washer system. If needed, disconnect water lines. Set fascia aside.



2. Remove six metric bolts from the bottom edge of front fascia using the 10MM socket.



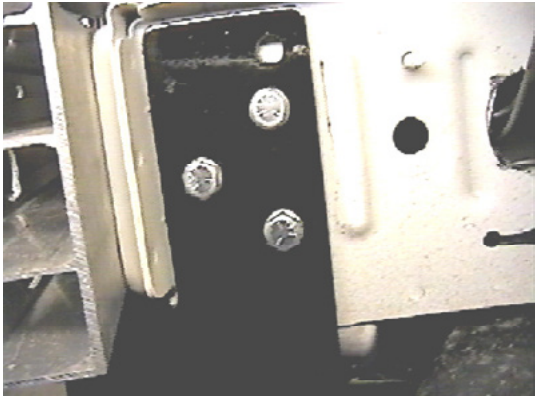
4. Remove two bolts and one nut from washer reservoir, unplug all washer lines and all electrical connections, set aside.



5. Using the 1 1/4" hole saw, cut a hole in the side of frame rail, both sides, see photo. Slide baseplate to the outside of frame rails and align with existing holes on both sides. Be sure to keep baseplate in a level position. Insert nut plate into 1 1/4" hole to align with the existing hole, install 3/8" bolt and lock washer. **Be sure to use loctite on all bolts before tightening. Tighten all bolts according to torque chart in General Instruction Sheet.**



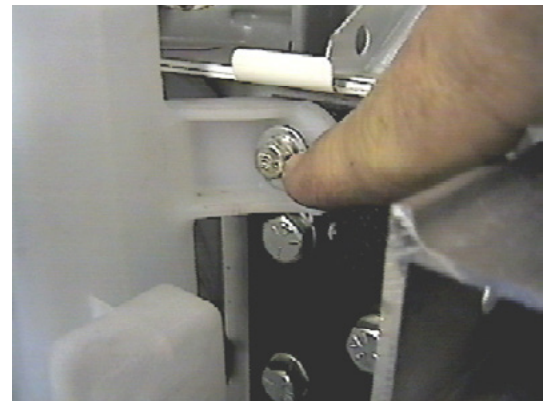
Strong As An Ox™



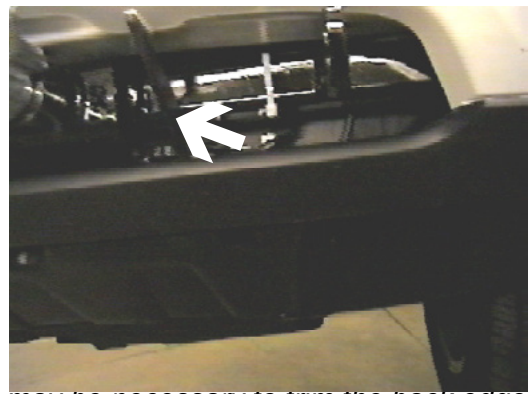
6. Using the baseplate as a template, drill remaining holes with the 13/32" drill bit. Insert nut plate into 1 1/4" hole to align with the drilled holes, install 3/8" bolt and lock washer. Tighten all bolts. **Be sure to use loctite on all bolts before tightening. Tighten all bolts according to torque chart in General Instruction Sheet.**



8. Hold fascia in place on vehicle, mark and trim areas on the back edge of fascia opening on both sides, see photo.



7. Reinstall washer reservoir using back existing metric bolt and nut. Then install the 6MM x 30MM bolt in the front holes. Be sure all water and all electrical lines are plugged in properly.



9. It may be necessary to trim the back edge of first vertical style on both side with the utility knife.

10. Reinstall fascia. Be sure to reconnect the water and electrical lines.

11. The dimensional variations between otherwise identical cars can be considerable. While the location and size of the holes in the baseplate were designed to allow for easy installation, it may be necessary to file a hole slightly to allow a bolt to clear.

12. Install the tow bar and safety cables according to the instructions included in their packages.

13. Do **not** substitute other devices if the tow bar pin and clip are lost.

14. **DEALER OR INSTALLER: BE CERTAIN THE USER RECEIVES THE INSTRUCTION SHEET.**



Strong As An Ox™

Tools Required

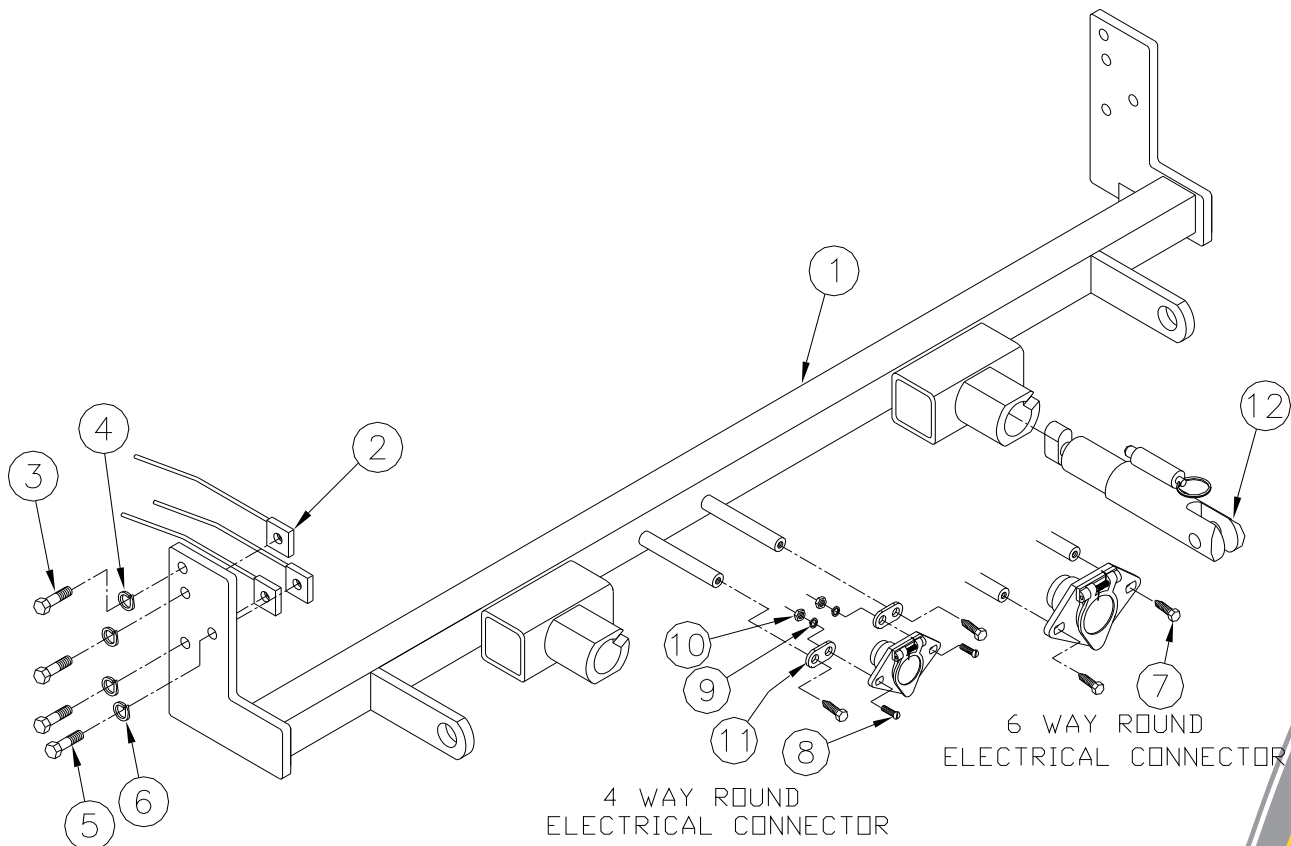
9/16 Sockets
10MM Socket
Phillips Screw Driver

Loctite Blue
Utility Knife

13/32" Drill Bit
1 1/4" Hole Saw

Parts List

Ref. No.	Qty.	Part No.	Description
1	1	61-5896	Weldment, Base Plate, BX2906
2	6	61-5208	Weldment, 3/8-16 Nut Plate, w/ 14" Wire
3	2	201-0655	6MM-1 x 30MM Hex Bolt, Grd.5, ZP
4	2	203-0008	1/4" Lock washer ZP
5	6	201-0440	3/8-16 x 1 Hex Bolt, Grd.5, ZP
6	6	203-0010	3/8 Lock washer, ZP
7	2	201-0979	#12-14 x 1" Self Drilling Screw, ZP
8	2	201-0192	#10-32 x 1/2 Slot, Rd. Hd Screw
9	2	203-0054	#10 Lock washer, ZP
10	2	202-0047	#10-32 Hex Nut, ZP
11	2	101-5822	Adapter, 4-way Connector
12	2	62-3468	Assy, Att. Tab, Rem., SF/SB
	2	226-0046	Baseplate Safety Cable, 36" CL III(Not Shown)
	2	229-0359	Quicklink, 3/8, ZP (Not Shown)
	2	290-0437	Receiver, Cap Plug (BLK) (Not Shown)



IMPORTANT: Use only genuine factory replacement parts on your Base Plate. Do not substitute homemade or nontypical parts. If a bolt is lost or in need of replacement, for your safety and the preservation of your Base Plate, be sure to use a replacement bolt of the same grade (Usually Grade 5, refer to parts list). Repair parts may be ordered through your nearest **Blue Ox** dealer or distributor.