



Strong As An Ox™

BX2907 Installation Instructions
1998-04 Lexus, LX470
1998-03 Toyota, Land Cruiser

Serial No.

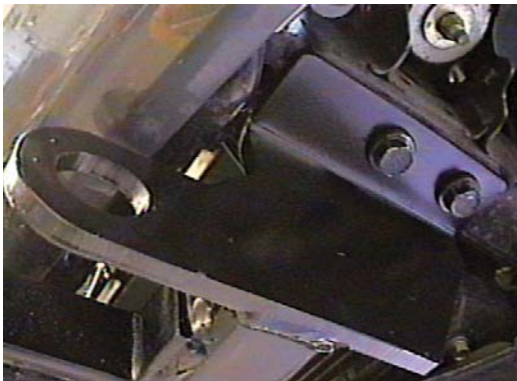
The tow hook and tie down brackets are removed for baseplate installation. Tie down brackets will not be reinstalled. **No** holes need to be drilled and **no** trimming is needed. The BX8869 is available for the vehicle. Attachment Tabs are 24 inches center to center and a height of 15 inches.



1. Using the 17MM socket, remove the metric bolts from driver's side tie down bracket. Tie down bracket will not be reinstalled.



2. Using the 17MM socket, remove two metric bolts from tow hook/ tie down bracket, on passenger's side. Tie down bracket will not be reinstalled.



3. Hold baseplate to align with holes of tie down bracket on driver's side and fasten existing bolts, do not tighten. **Be sure and use loctite on all bolts before tightening.**



4. On the passenger's side, install baseplate, vehicle's factory tow hook, two existing metric bolts, and tighten all bolts. **Be sure and use loctite on all bolts before tightening.**

5. The dimensional variations between otherwise identical cars can be considerable. While the location and size of the holes in the baseplate were designed to allow for easy installation, it may be necessary to file a hole slightly to allow a bolt to clear.
6. Install the tow bar and safety cables according to the instructions included in their packages.
7. Do **not** substitute other devices if the tow bar pin and clip are lost.
8. **DEALER OR INSTALLER: BE CERTAIN THE USER RECEIVES THE INSTRUCTION SHEET.**



Strong As An Ox™

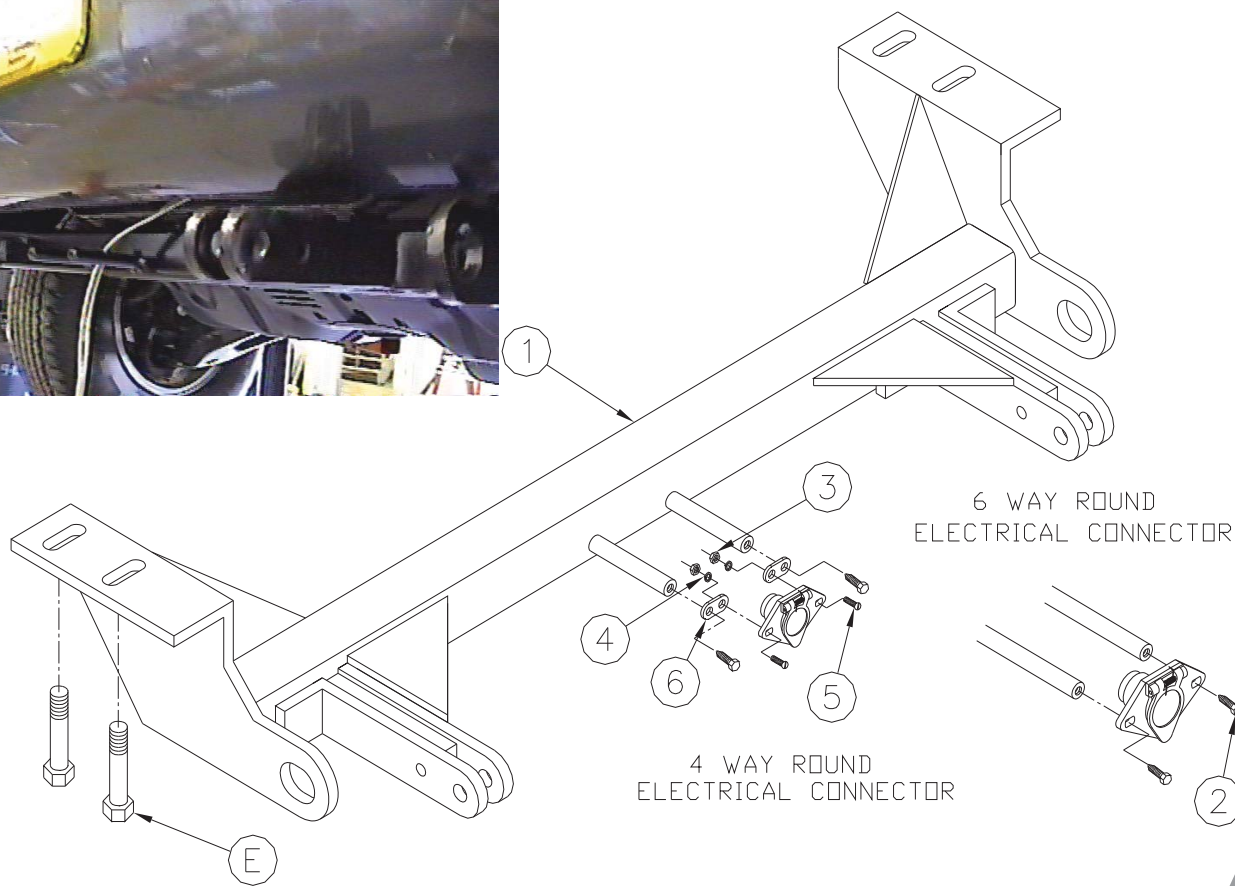
Tools Required

17MM Socket

Loctite Blue

Parts List

Ref. No.	Qty.	Part No.	Description
1	1	61-6003	Weldment, Base Plate, BX2907
2	2	201-0553	1/4-20 x 1/2 Hx. Wshd, Type F Screw
3	2	201-0192	#10-32 x 1/2 Slot, Rd. Hd. Screw
4	2	203-0054	#10 Lock Washer
5	2	202-0047	#10-32 Hex Nut
6	2	101-5822	Adapter, 4 Way Connector
E	4		Existing Factory Tow Hook Bolts
	2	226-0046	Baseplate Safety Cable, 36" CL III (Not Shown)
	4	229-0359	Quicklink, 3/8, ZP (Not Shown)



IMPORTANT: Use only genuine factory replacement parts on your Base Plate. Do not substitute homemade or nontypical parts. If a bolt is lost or in need of replacement, for your safety and the preservation of your Base Plate, be sure to use a replacement bolt of the same grade (Usually Grade 5, refer to parts list). Repair parts may be ordered through your nearest **Blue Ox** dealer or distributor.