



Baseplate Installation Instructions

BX2910

2010 Lexus Rx350 Installation Instructions

Serial Number

Please read **BOTH** these Installation Instructions and the General Towing Instructions before attempting to install or operate this equipment.

- Blue Ox® towing products and accessories are intended to be installed by Blue Ox® Dealers who are familiar with our products and have the equipment and knowledge to do “fit work.” When necessary, Blue Ox® Dealers can be found at www.blueox.com or by contacting our Customer Care Department at (402) 385-3051.
- Many Blue Ox® Baseplates are designed to use existing holes and hardware to mount the baseplate to the towed vehicle. Even though bolts are there, do not assume they are adequate for baseplate mounting. Always use hardware supplied in the hardware kit or existing hardware specified in the Baseplate Towing Installation Instructions.

Attachment Tab Height: 16 1/2”
Attachment Tab Width: 22”

Bolt Torque Specifications

Torque in Foot-Pounds for Metric Bolts

Bolt Size	Grade 8.8	Grade 10.9
6MM	6	8
8MM	16	22
10MM	31	40
12MM	54	70
14MM	89	117

Confirm the towability and pre-towing procedures for your vehicle with the owner’s manual or contact the vehicle’s manufacturer for specific towing procedures.

Bolt Torque Specifications

Torque in Foot-Pounds for Inch Bolts

Bolt Size	Grade 5	Grade 8
1/4”	10	14
5/16”	19	29
3/8”	33	47
7/16”	54	78
1/2”	78	119
5/8”	154	230



If the front of your vehicle looks different than this, call us at (402) 385-3051.

WARNING

Failure to read and follow these instructions could result in separation of the towed vehicle from the tow bar, causing property damage, loss of towed vehicle, personal injury or death.

BX2910

2010 Lexus Rx350

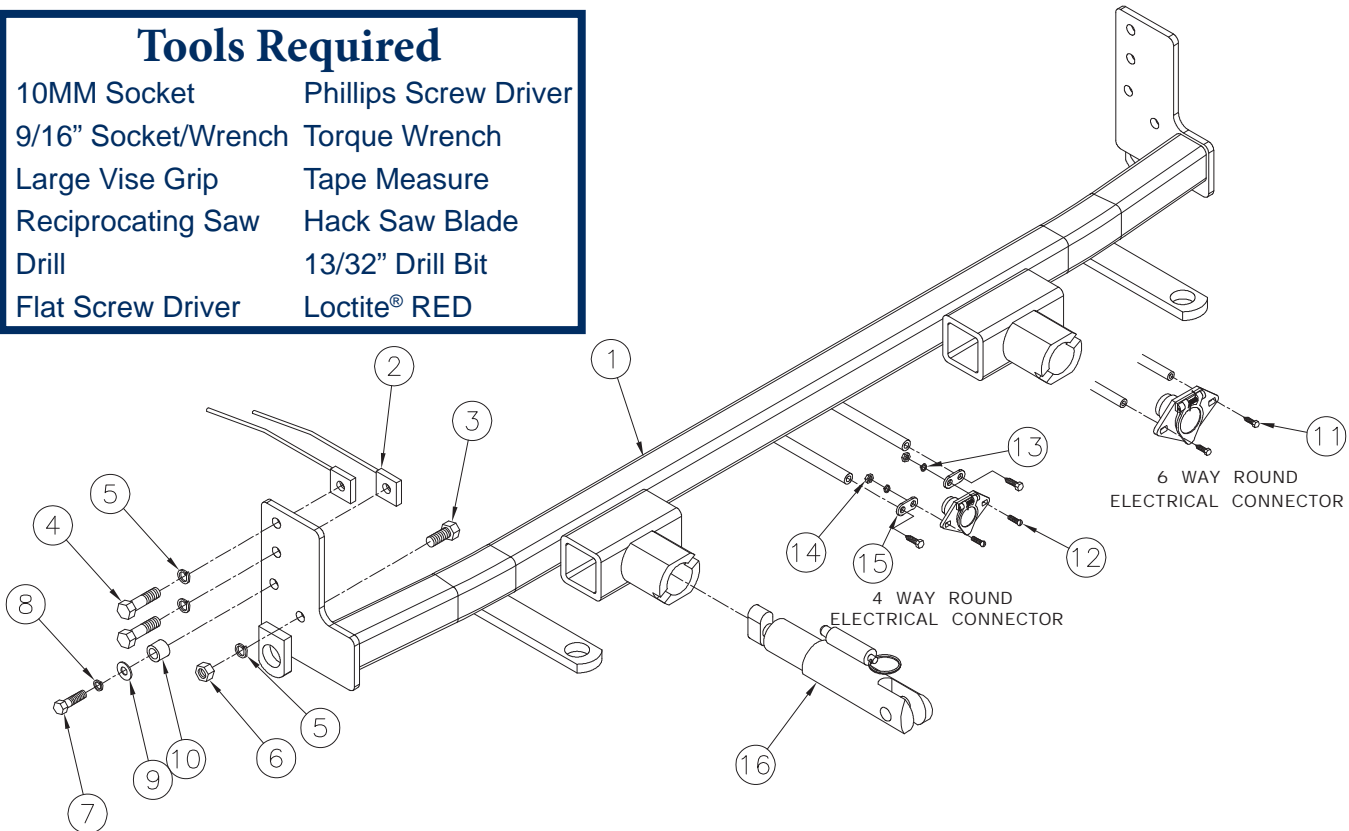
Installation Instructions

Parts List

Ref. No.	Qty.	Part #	Description
1	1	61-6758	WLDM'T, BP, BX2910
2	4	61-5208	WLDT, NUT PLT, 1/4X1X1, 3/8 BLT WIR
3	2	201-0368	3/8-16 X 1 1/4 HEX HEAD BOLT,GRD. 5
4	4	201-0440	3/8-16 X 1 1/2 HEX BOLT, GRD.5, ZP
5	6	203-0010	3/8 LOCK WASHER, ZP
6	2	202-0003	3/8-16 HEX NUT, ZP
7	2	201-0655	6MM-1.0 X 30MM HEX BOLT, GRD8.8,ZP
8	3	203-0008	1/4 LOCK WASHER, ZP
9	3	203-0001	1/4 FLAT WASHER, ZP
10	3	107-3117	SPACER TUBE, 3/4OD X .406 ID X 1/2"
11	2	201-0553	1/4-20 X 1/2 HX.WSHD.TYPE F TCS, ZP
12	2	201-0192	10-32 X 1/2 SLOT, RD. HD. SCREW
13	2	203-0054	#10 LOCK WASHER
14	2	202-0047	#10-32 HEX NUT
15	2	101-5822	ADAPTER, 4 WAY CONNECTOR
16	2	62-3468	ATT TAB ASSY, REM, SF/SB, 1 HOLE
	2	226-0046	BASEPLATE SAFETY CABLE, 36" CL III (Not Shown)
	2	229-0359	QUICKLINK, 3/8, ZP (Not Shown)
	2	290-0437	RECEIVER, CAP PLUG (BLK) (Not Shown)

Tools Required

10MM Socket	Phillips Screw Driver
9/16" Socket/Wrench	Torque Wrench
Large Vise Grip	Tape Measure
Reciprocating Saw	Hack Saw Blade
Drill	13/32" Drill Bit
Flat Screw Driver	Loctite® RED



Important:

Use only genuine factory replacement parts on your baseplate. Do **NOT** substitute homemade or non-typical parts. If a bolt is lost or in need of replacement, for your safety and the preservation of your baseplate, be sure to use a replacement bolt of the same grade (In most cases it will be Grade 5, please reference the parts list above). Replacement parts may be ordered through your nearest Blue Ox® Dealer or Distributor. Failing to follow and/or altering these installation instructions in either installation or required equipment will void the manufacturer's warranty. Towing behind a non-motorized vehicle will void the warranty,

BX2910
2010 Lexus Rx350
Installation Instructions

Vehicle Weight:

Motorhome mount tow bars are recommended for use with this baseplate. Due to the design of the removable tabs, the RangeFinderII, Adventurer, and Ambassador tow bars can not be used. The Acclaim tow bar may be used, but will not fold and store on the front of the vehicle. Adapters, except the BX8833 and BX88151, can not be used with this baseplate.

Installation Notes: The fascia is removed and reinstalled during installation of the baseplate. Drilling is required. Trimming of the fascia and air dam is required.

The dimensional variations between otherwise identical vehicles can be considerable. While the baseplate was designed for easy installation, it may be necessary to tailor the baseplate slightly to compensate for auto manufacturer's tolerances. These minor adjustments may include filing a hole slightly, bending electrical rods and/ or bending end plates.

The BX8848 4-Diode Wiring Kit is recommended for this vehicle.

Handling of some cosmetic parts when installing this product may require the use of protective covers, rags, specialty tools, etc. to prevent damage.

Installation Instructions:



1. On the top of the fascia remove four push pins with a flat screwdriver. Then remove the two additional push pins across the front. Do this on both sides. Set push pins aside to be reinstalled later.



2. Remove the plastic cover. Using a Phillips screw driver remove one push pin in each corner and one in the middle by the fascia. Set push pins aside to be reinstalled later.

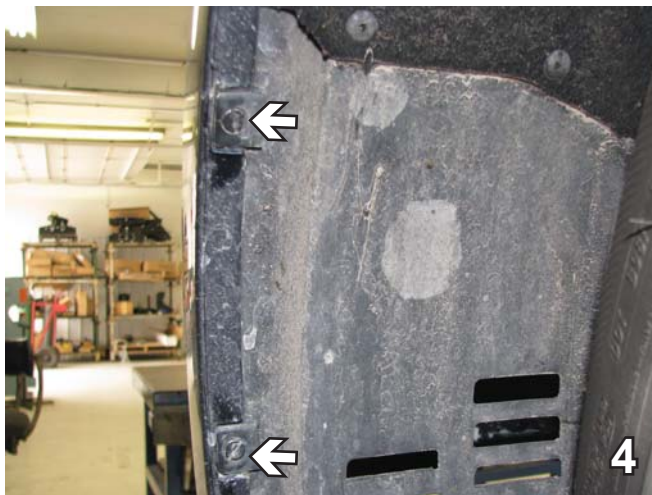
BX2910

2010 Lexus Rx350

Installation Instructions



3. Using a flat screw driver, remove the push pin on each side holding the fascia. Set push pins aside for later reinstallation.



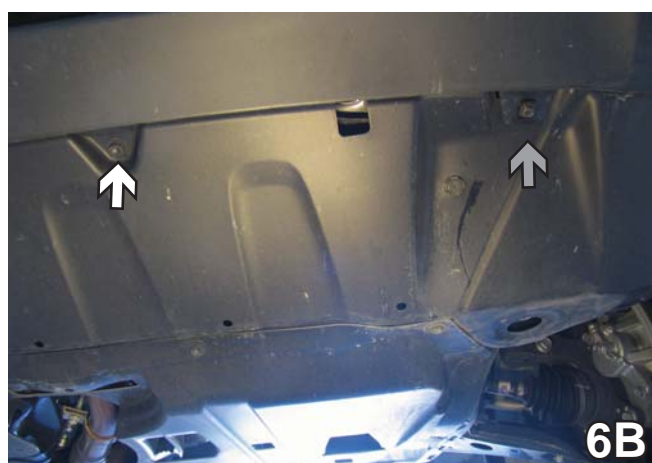
4. Forward of the front tire, using a flat screw driver turn the two screws to the horizontal position and they will release. Do this to both sides of the vehicle. Set screws aside to be reinstalled later.



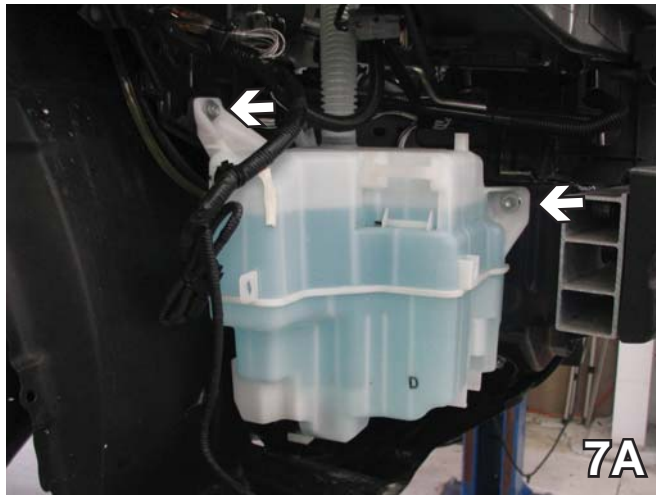
5. Just forward of the front tire, lift up the wheel well cover, use a 10MM socket to remove the screw. Do this to both sides of the vehicle. Set screws aside to be reinstalled later.



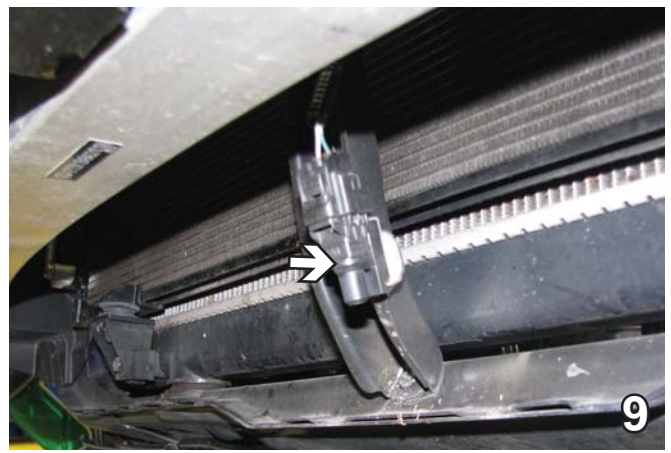
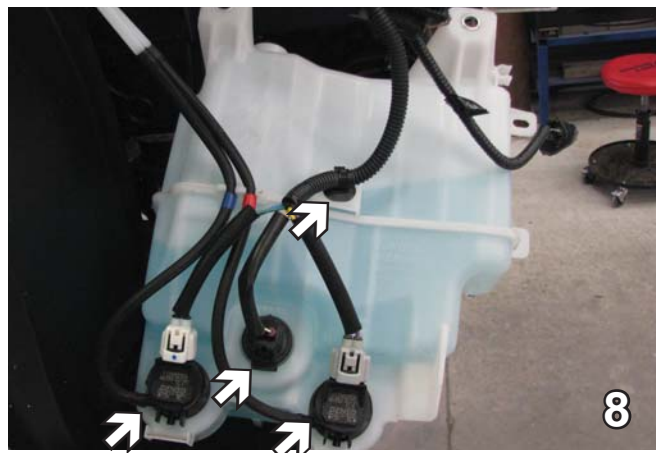
6. Underneath the fascia, using a 10MM socket remove one bolt in front of the tire and one in the center (white arrows). Using a flat screw driver, remove the push pin on each side (gray arrow). Do this on both sides of the vehicle. Pull fascia corner out to the side of the vehicle, both sides, then pull fascia forward and set aside carefully for later reinstallation.



BX2910
2010 Lexus Rx350
Installation Instructions



7. On the passenger side, remove the washer reservoir. Pull up to remove the hose on top (7B grey arrow). Using a 10MM socket, remove the three bolts holding the washer reservoir (white arrows). Set aside for later reinstallation.

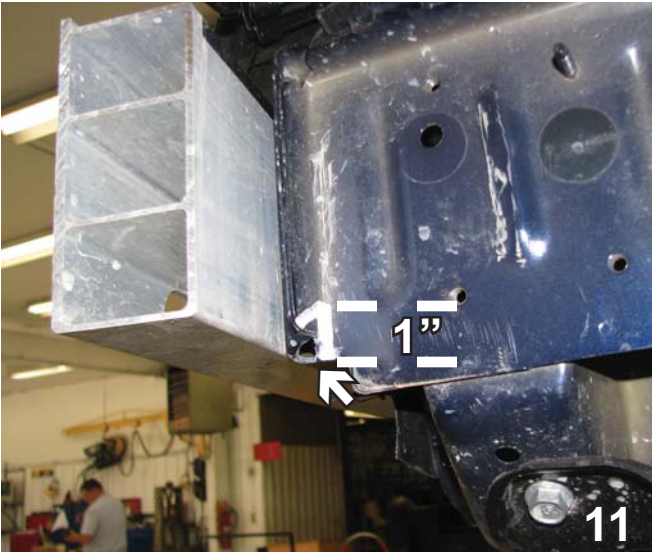


8. In the back of the washer reservoir, unhook the hoses and plug and disconnect the electrical lines. Set reservoir aside for later reinstallation.
9. The temperature sensor located in the middle of the radiator will need to be removed and reinstalled later.



10. Underneath the fascia, straight under the bumper, notch out the corner of the air dam. Do this on both sides of the vehicle.

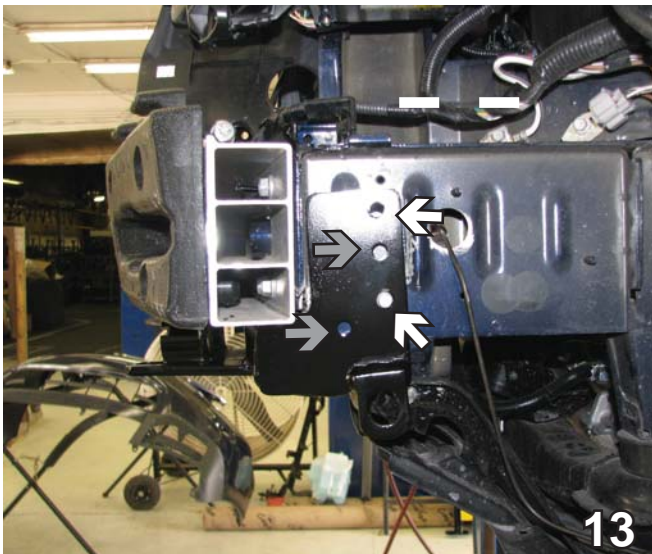
BX2910
2010 Lexus Rx350
Installation Instructions



11. Behind the bumper, cut out a notch. Cut up one inch then slant down to the corner. Do this on both sides of the vehicle.



12. Drill a 1 1/4" hole in the area shown which will be used to insert nut plates. Do this on both sides of the vehicle.



13. Slide the base plate on, line it up with the existing holes one on each side (white arrows) and be sure it is straight. In the lower hole, insert a 6MM-1.0 x 30MM hex bolt, 1/4" flat washer and 1/2" spacer tube. With the base plate as a template using a 13/32" drill bit, drill the other two holes (gray arrows).



14. In the lowest hole (grey arrow), use a 3/8-16 x 1 1/4" hex bolt with a 3/8" lock washer and 3/8-16 hex nut. Note: The lower bolt is inserted from the back side of frame webbing (see page 2). The other bolts are 3/8-16 x 1 1/2", attached to 3/8 lock washer and 3/8-16 nut plates. Also cover the hole on the back. Do this to both sides.

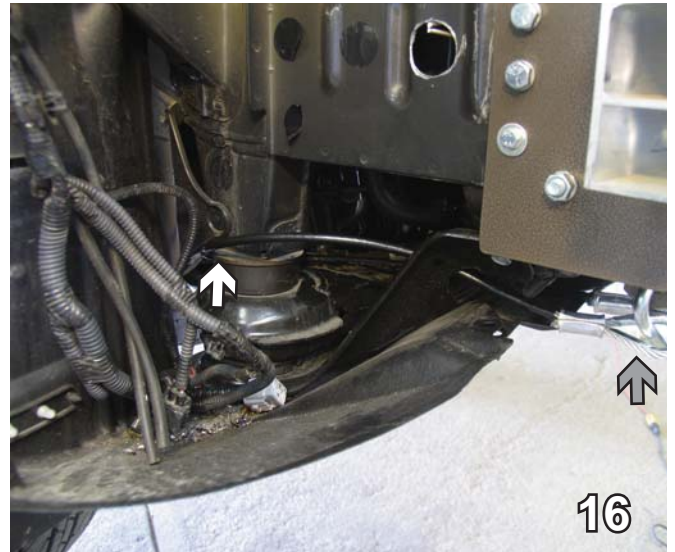
BE SURE TO USE LOCTITE® RED ON ALL BOLTS BEFORE TIGHTENING. TIGHTEN ALL BOLTS ACCORDING TO THE TORQUE CHART ON THE FRONT PAGE OF THESE INSTRUCTIONS OR ON PAGE 3 OF THE BASEPLATE TOWING GENERAL INSTRUCTIONS.

When using power drills be aware of the dangers of torque and drill bit length.

BX2910
2010 Lexus Rx350
Installation Instructions



15. Reinstall washer reservoir. Do not use the existing bolt in the area shown, use a 6MM -1.0 x 30MM hex bolt with 1/4" lock washer, 1/4" flat washer and 1/2" spacer. Connect the hoses and plug in electrical connections.



16. Attach the permanent baseplate safety cables to the provided convenience link on the baseplate (see grey arrow). The photo above shows the recommended installation of the cables to frame of vehicle (see white arrow). Additional options may interfere with suggested mounting; in this case secure the cables to a solid piece of the frame as described in the instructions included with the permanent baseplate safety cables. Be sure the safety cables do not rub against any hoses or moving parts. Do this to both sides of the vehicle.



17. On the back side of the fascia, trim flush with the bottom, straight down to the corner, then across staying inside the lowest rib. Do this to both sides.

Be sure that **ALL** electrical connections are plugged in properly and functioning **BEFORE** installing the fascia.

19. Reinstall fascia, bolts and push pins. The installation of the baseplate is complete.



18. Trim the fascia. Using a utility knife, remove the second horizontal style from the end. Do the same on the other side.

BX2910

2010 Lexus Rx350

Installation Instructions

Install the tow bar and safety cables according to the instructions provided in their packages. When demonstrating this to the customer, be sure to include all the contents and packages.

Do **NOT** substitute other devices if the tow bar pins and clips are misplaced.

DEALER or INSTALLER:
Be certain the user receives the instruction sheets for their products.



If the baseplate is in an accident, it must be replaced. **DO NOT** use it again! An accident can cause unseen damage and using it again could result in more damage or serious injury. **DO NOT** use the baseplate if it is damaged or missing parts.

CUSTOMER SERVICE COMMITMENT

Blue Ox is committed to providing you with exceptional customer care throughout your lifetime with our products. Our team is here to assist you with any questions you may have regarding the performance of your product. Simply call (402) 385-3051 and you can speak with our customer care team.

Additionally, please visit our website to see which rallies our Destination America team will be attending. For a nominal fee, our service technician will service your towing system to ensure it's in proper working condition. Also as a commitment to our customers, should you visit our factory you can stay at our full service Blue Ox campground at no charge along with enjoying a factory tour.

Again thank you for being our customer and for the confidence you have shown in the performance of our products. It is because of customers like you we enjoy the success we have today.



© 2010 Blue Ox
One Mill Road, Industrial Park
Pender, Nebraska 68047
Phone: (402) 385-3051 • Fax: (402) 385-3360
www.blueox.com