

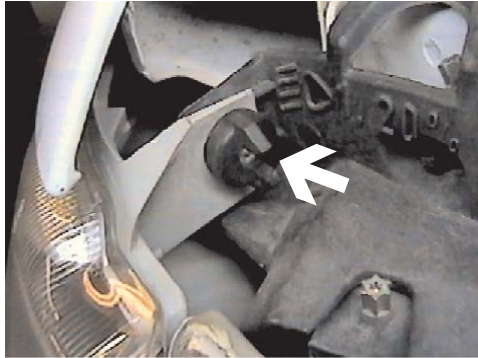


Strong As An Ox™

**BX3230 Installation Instructions**  
**1997-2004 Oldsmobile Silhouette**  
**1997-2003 Chevy Venture**

Serial No.

The headlight assembly, front fascia, horn bracket and windshield washer reservoir are removed for baseplate installation. Drilling is required. Trimming of air dam on metal bumper is required. The BX8869 is available for the vehicle. Attachment Tabs are 24 inches center to center and a height of 13 3/4 inches.



1. Remove wing nut on top side of head light assembly, pull assembly forward, unplug and set aside, both sides.



2. Remove one push pin from under head light assembly, both sides.



3. Just forward of front tires are two phillips screws to remove, both sides.



4. Forward of front tires, inside wheel well, on fascia's corner is one push pin to remove, both sides.



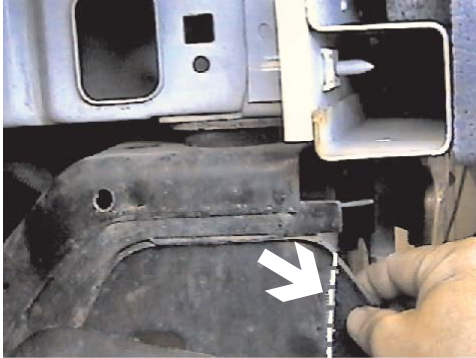
5. Remove the two phillips screws just forward of the front tire, on the bottom side of fascia, using the phillips screw driver, both sides.



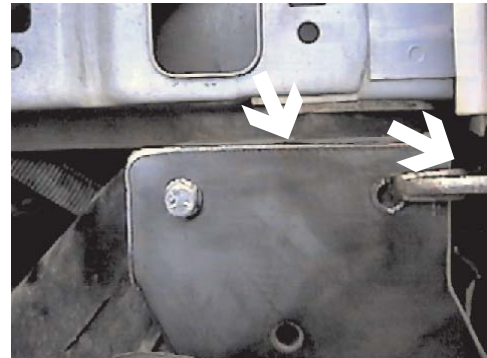
6. Remove two push pins from top edge of lower fascia opening, between fog lights. Pull fascia forward and set aside.



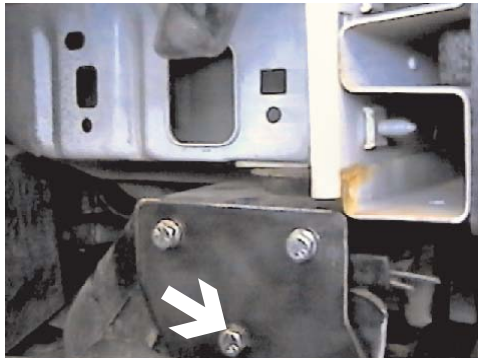
Strong As An Ox™



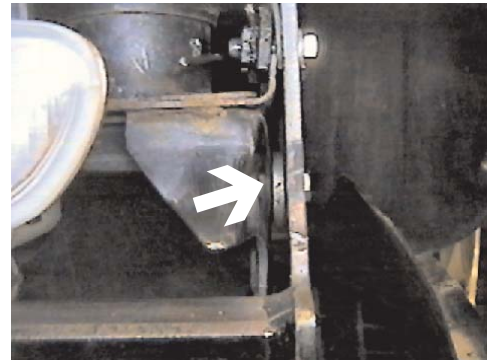
7. Using the reciprocating saw, cut 1 3/4"- 2" off of passenger's side tie down bracket to open area for baseplate (Vehicles may vary).



8. Align baseplate to the top, front edge of lower frame support, clamp with the vise grips on both sides. Using the baseplate as a template, drill the top two holes with the 13/32" drill bit, both sides. Insert nut plate into end of frame to align with drilled holes and tighten 3/8" hex nut and lock washer as shown in drawing on page 3. **Be sure and use loctite on all bolts before tightening. Torque all bolts according to torque chart in General Instructions.**



9. Using the baseplate as a template, drill lower hole with the 13/32" drill bit, both sides. Align 1/2" spacer plate between lower hole on end plate and drilled hole in tie down bracket on passenger's side. Insert 3/8" hex bolts into lower hole on passenger's side, tighten lock washer and hex nut on back side of tie down bracket. **Be sure and use loctite on all bolts before tightening. Torque all bolts according to torque chart in General Instructions.**

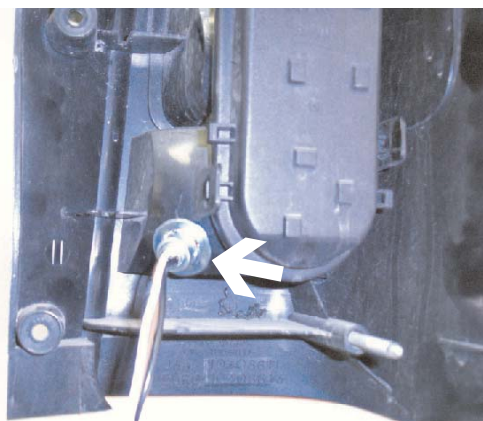


10. Insert spacer washers between lower hole on end plate and drilled hole in tie down bracket on driver's side. Some vehicles may only need one spacer to fill gap. Insert 3/8" hex bolts into lower hole on driver's side, tighten lock washer and hex nut on back side of tie down bracket. **Be sure and use loctite on all bolts before tightening. Torque all bolts according to torque chart in General Instructions.**



Strong As An Ox™

11. Reinstall fascia and head light assemblies. Be sure all electrical connections are plugged in properly.
12. The dimensional variations between otherwise identical cars can be considerable. While the location and size of the holes in the baseplate were designed to allow for easy installation, it may be necessary to file a hole slightly to allow a bolt to clear.
13. Install the tow bar and safety cables according to the instructions included in their packages.
14. Do **not** substitute other devices if the tow bar pin and clip are lost.
15. **DEALER OR INSTALLER: BE CERTAIN THE USER RECEIVES THE INSTRUCTION SHEET.**



*Location for the  
Bx8869 on driver's side  
tail light assembly.*

### Tools Required

7MM Socket  
13MM Socket  
Phillips Screw Driver  
Pry Bar

10MM Socket  
Loctite  
Vise Grips  
Utility Knife

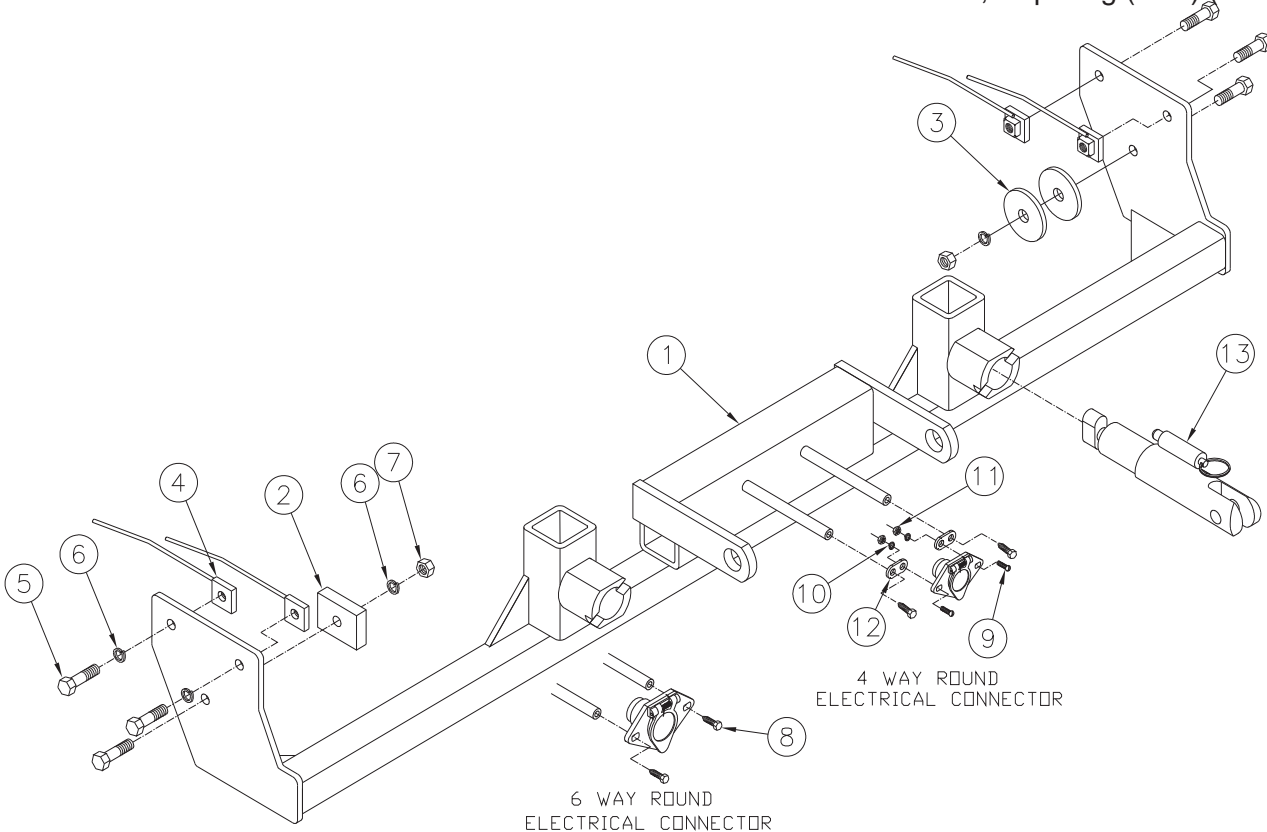
11MM Socket  
13/32" Drill Bit  
9/16" Socket



Strong As An Ox™

## Parts List

Ref. No.	Qty.	Part No.	Description
1	1	61-5978	Weldment, Base Plate, BX3230
2	1	102-6145	Spacer, BX1944
3	2	101-5147	Plate, Washer 1/2" hole, ZP
4	4	61-5208	3/8" Nut Plate, with Wire
5	6	201-0440	3/8-16 x 1 1/2 Bolt, Grd. 5, ZP
6	6	203-0010	3/8 Lock Washer, ZP
7	2	202-0003	3/8-16 Hex Nut, ZP
8	2	201-0553	1/4-20 x 1/2 Hx. Wshd, Type F Screw
9	2	201-0192	#10-32 x 1/2 Slot, Rd. Hd. Screw
10	2	203-0054	#10 Lock Washer
11	2	202-0047	#10-32 Hex Nut
12	2	101-5822	Adapter, 4 Way Connector
13	2	62-3468	Attachment, Assembly, SF/ SB (R)
	2	226-0046	Baseplate Safety Cable, 36" CL III (Not Shown)
	2	229-0359	Quicklink, 3/8, ZP (Not Shown)
	2	290-0437	Receiver, Cap Plug (BLK) (Not Shown)



**IMPORTANT:** Use only genuine factory replacement parts on your Base Plate. Do not substitute homemade or nontypical parts. If a bolt is lost or in need of replacement, for your safety and the preservation of your Base Plate, be sure to use a replacement bolt of the same grade (Usually Grade 5, refer to parts list). Repair parts may be ordered through your nearest **Blue Ox** dealer or distributor.