



**BLUE OX**<sup>®</sup>

Baseplate Installation Instructions

BX3314

2000-02 Saturn L-Series

(All Models)

# Installation Instructions

Serial Number

**Please read BOTH these Installation Instructions and the General Instructions before attempting to install or operate this equipment.**

Attachment Tab Height: 13.5"

Attachment Tab Width: 24"

- Blue Ox<sup>®</sup> towing products and accessories are intended to be installed by Blue Ox<sup>®</sup> Dealers who are familiar with our products and have the equipment necessary and knowledge to do "fit work". When necessary Blue Ox<sup>®</sup> Dealers can be found at [www.blueox.com](http://www.blueox.com) or by contacting our Customer Care Department at (402) 385-3051.
- Many Blue Ox<sup>®</sup> Baseplates are designed to use existing holes and hardware to mount the baseplate to the towed vehicle. Even though bolts are there, do not assume they are adequate for baseplate mounting. Always use hardware supplied in the hardware kit and existing hardware specified in the Baseplate Installation Instructions.

Confirm the towability and pre-towing procedures for your vehicle with the owner's manual or contact the vehicle's manufacturer for specific towing procedures.

### Bolt Torque Specifications

Torque in Foot-Pounds for Metric Bolts

Bolt Size	Grade 8.8	Grade 10.9
6MM	6	8
8MM	16	22
10MM	31	40
12MM	54	70
14MM	89	117

### Bolt Torque Specifications

Torque in Foot-Pounds for Inch Bolts

Bolt Size	Grade 5	Grade 8
1/4"	10	14
5/16"	19	29
3/8"	33	47
7/16"	54	78
1/2"	78	119
5/8"	154	230



# WARNING

Failure to read and follow these instructions could result in separation of the towed vehicle from the tow bar, causing property damage, loss of towed vehicle, personal injury or death.

# BX3314 2000-02 Saturn L-Series

(All Models)

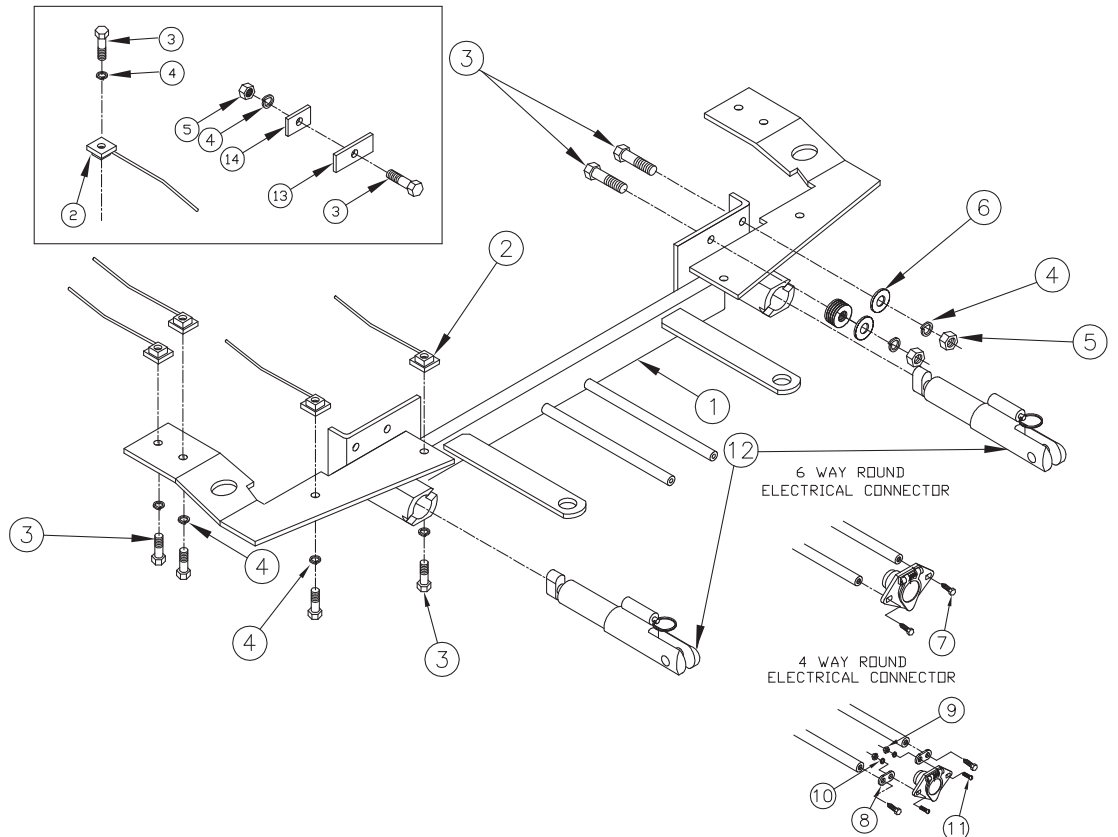
## Installation Instructions

### Parts List

Ref. No.	Qty.	Part #	Description
1	1	61-5371	Baseplate, BX3314
2	10	61-5208	3/8" Nutplate with Wire
3	16	201-0440	3/8-16 x 1 1/2" Hex Bolt, Grade 5
4	16	203-0010	3/8" Lock Washer
5	6	202-0003	3/8" Hex Nut
6	14	203-0003	3/8" Flat Washer
7	2	201-0553	1/4-20 x 1/2" Hex Bolt
8	2	101-5822	Adapter, 4 Way Connector
9	2	202-0047	#10-32 Hex Nut
10	2	203-0054	#10 Lock Washer
11	2	201-0192	#10-32 x 1/2" Slot Rd. Hd. Screw
12	2	62-3470	Removable Attachment Tab, LF/LB
13	2	102-6026	Frame Brace, 3/16" x 1" x 2.5, BX3314
14	2	102-6025	Frame Brace, 3/16 X 1 X 1.5, BX3314
	2	226-0046	Baseplate Safety Cable, 36" CL III (Not Shown)
	2	229-0359	Quicklink, 3/8, ZP (Not Shown)
	2	290-0437	Receiver, Cap Plug (BLK) (Not Shown)

### Tools Required

3/4" Wrench  
 13MM Wrench  
 9/16" Wrench  
 9/32" Socket  
 Medium Flat Screwdriver  
 3/8" (Long) Drill Bit  
 Tape Measure  
 Center Punch  
 Utility Knife  
 Drill  
 Pry Bar



### Important:

Use only genuine factory replacement parts on your baseplate. Do NOT substitute homemade or non-typical parts. If a bolt is lost or in need of replacement, for your safety and the preservation of your baseplate, be sure to use a replacement bolt of the same grade (In most cases it will be Grade 5, please reference the parts list above). Replacement parts may be ordered through your nearest Blue Ox® Dealer or Distributor, or call our Customer Care Team at (402)385-3051. Failing to follow and/or altering these installation instructions in either installation or required equipment will void the manufacturer's warranty. Towing behind a non-motorized vehicle will void the warranty.

# BX3314

## 2000-02 Saturn L-Series

(All Models)

### Installation Instructions

#### Removable Tabs:

Due to the design of the removable tabs, the RangeFinderII tow bar can not be used. Adapters, except the BX8833 and BX88151, can not be used with this baseplate.

#### Installation Notes:

The bumper fascia and metal bumper are removed and reinstalled for the installation of this baseplate. Drilling is required. The center grille piece can either have the outside edges trimmed or the whole piece can be take off. Fog lights will have to be removed to install the baseplate. If the vehicle is equipped with fog lights it may be necessary to file the baseplate so it can be installed. **NOTICE: 2000-01 "L" Series; Follow the owners manual instructions for towing, and remove uses IGN 0/3CR and IGN 1/2. BE CERTAIN THE USER RECEIVES THE INSTRUCTION SHEET.**

Some vehicles fascia's may need trimming. The dimensional variations between otherwise identical vehicles can be considerable. While the baseplate was designed for easy installation, it may be necessary to tailor the baseplate slightly to compensate for auto manufacturer's tolerances. These minor adjustments may include filing a hole slightly, bending electrical rods or bending end plates.

**The Bx8869 Bulb and Socket Wiring Kit is recommended for this vehicle.**

**BX3314**

**BX8869 Installation Instructions  
2002 Saturn L 300**



Handling of some cosmetic parts when installing this product may require the use of protective covers, rags, specialty tools, etc. to prevent damage.

# BX3314

## 2000-02 Saturn L-Series

(All Models)

### Installation Instructions



**Possible Location of the BX8869 Bulb & Socket Wiring Kit**

## Installation Instructions

1. Remove the four plastic pushpins that are forward of each front tire.
2. Open the hood and remove the three plastic pushpins fastening the top section of the plastic fascia (center of the vehicle). Underneath the fascia, in the area of the grill opening, are two plastic pushpins that need to be removed. The fascia can now be slid forward and removed from the vehicle.
3. The metal bumper has foam piece attached to it by three pushpins. Remove the foam piece. Remove the six (three on each end) 13MM hex head nuts from the metal bumper (four are inside the bumper and two are on the outside). Pull the bumper off and set face down.
4. With the back side of the metal bumper facing up, measure over 10 3/16" on the bottom of the center lip, (double check the measurements to be sure the baseplate is centered on the bumper). Center punch and drill a 3/8" hole. Figure 1. Bolt the baseplate to the bumper (outside holes on the bent brace). Use the 3/8-16 x 1 1/2" hex bolt, 3/8" lock and flat washer and the 3/8" hex nut. As shown in the drawing on page 2.



**Figure 1**



**Figure 2**

**When using power drills be aware of the dangers of torque and drill bit length.**

# BX3314

## 2000-02 Saturn L-Series

(All Models)

### Installation Instructions

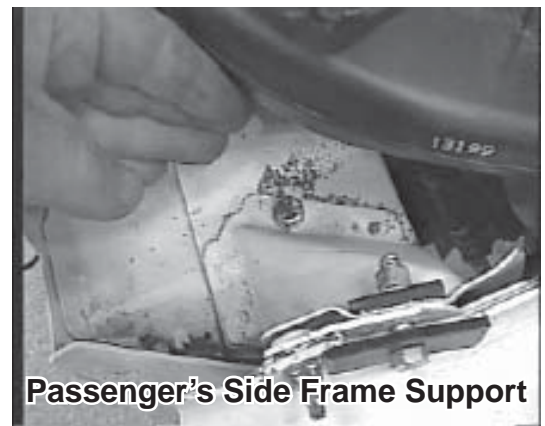
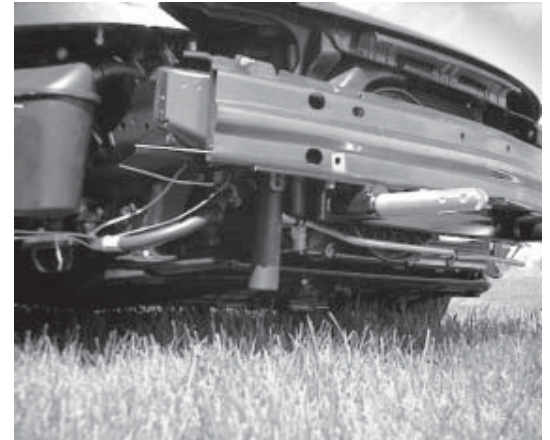
5. Hold the baseplate up so it is centered on the other side of the bottom bumper lip, center punch and drill the remaining 3/8" holes. Use the 3/8-16 x 1 1/2" hex bolts, 3/8" lock and flat washers and the hex nuts. As shown in the drawing on page 2. **NOTE: Use flat washers to fill the gap between the inside holes and the metal bumper. Use LOCTITE Red and torque bolts according to the chart in the Baseplate General Towing Instruction Sheet included with the baseplate.**
6. Drill the four 3/8" holes for the bottom of the baseplate. Use the 3/8-16 x 1 1/2" hex bolt, 3/8" lock and flat washer and the 3/8" nutplate with wire. Use LOCTITE Red on each bolt and torque according to the torque chart in the Baseplate General Towing Instruction Sheet. As shown on page 2. Replace the metal bumper.

### FOR VEHICLES WITH FOG LIGHTS

7. Remove the two bolts holding each fog light. Disconnect the electrical connectors and pull light off. Hold the bumper and the baseplate up to the bumper's original position and bolt it back on the frame. **NOTE: Hold the fog lights up in their original position to be sure that they fir with the baseplate on. Mark and file the baseplate to allow the lights to be reinstalled.**
8. The four 3/8" holes for the flat pieces of the baseplate extending back along the frame need to be drilled. Use the baseplate as a template and drill one hole. When drilling the passenger side holes you will have a large hose needing to be pushed out of the way with a pry bar, be careful while doing this process not to damage it. Apply LOCTITE Red and insert the 3/8" nut plate with wire into the large holes of the baseplate and frame. Loosely thread a 3/8-16 x 2" hex bolt with lock washer into the nutplate. Use this procedure for remaining three holes. Once all four holes have been started, torque bolt according to the torque chart.

### FRAME SUPPORT

9. To strengthen the bumper to frame connection for both sides, place the longer brace on the upper lip of the bumper, as shown in the picture. Mark and drill the 3/8" holes. Use the hardware shown in the drawing on page 2 and for hole locations refer to the photos at the right. Loosen the screw holding the plastic tubing on the passenger side to get access to drilled hole in the frame.



# BX3314

## 2000-02 Saturn L-Series

(All Models)

### Installation Instructions

10. The bumper fascia can now be replaced, the grille section in the large opening will either have to be cut on the outside edges or the whole piece can be taken off permanently for towing purposes. See Figure 2 to see where the trimming (white squares) needs to be done replace the bumper fascia. The two rivets that are positioned on the inside of the fascia by the grille area cannot be reinstalled because the baseplate is in the way.

## OPERATION AND NOTES

To install the tow bar connectors, push the connector all the way in through the bumper mount with the release pin housing up. Rotate the connector until the locking pin engages. To remove the tow bar connectors from the car, pull on the ring to release the lock pin and rotate the connector. Pull the connector straight ahead to remove. Be sure to rotate the connectors so the pin assemblies point up. Keep attachment tabs and a receiver tube clean to help prevent rust. Periodically spray tabs inside of the tubes with silicon spray. Remove attachment tabs when they are not in use.

Install the tow bar and the safety cables according to the instructions included in their packages.

Do NOT substitute other devices if the tow bar pin and clip are lost.

Dealer or Installer: Be certain the user receives the instruction sheet.

## CUSTOMER SERVICE COMMITMENT

Blue Ox is committed to providing you with exceptional customer care throughout your lifetime with our products. Our team is here to assist you with any questions you may have regarding the performance of your product. Simply call 1-(402)-385-3051 and you can speak with our customer care team.

Additionally, please visit our website to see which rallies our Destination America team will be attending. For a nominal fee, our service technician will service your towing system to ensure it's in proper working condition. Also as a commitment to our customers, should you visit our factory you can stay at our full service Blue Ox campground at no charge along with enjoying a factory tour.

Again thank you for being our customer and for the confidence you have shown in the performance of our products. It is because of customers like you we enjoy the success we have today.



© 1999, 06, 10 Blue Ox  
One Mill Road, Industrial Park  
Pender, Nebraska 68047  
Phone: (402) 385-3051  
Fax: (402) 385-3360  
[www.blueox.com](http://www.blueox.com)