



Strong As An Ox™

BX3321 Installation Instructions 2004-05 Saturn Vue Red Line

The headlight assembly, blinker assembly, front fascia, metal bumper and air baffle on passenger's side are removed for baseplate installation. Drilling is required. Trimming of air dam is required. The BX8869 is available for the vehicle. Attachment Tabs are 22 inches center to center and a height of 22 inches.



1. Remove the two push pins from top edge of fascia.



2. Remove the metric bolt and one push pin from blinker assembly with the 10MM socket, both sides, pull forward, unplug electrical and set aside.



3. Just forward of front tires are four push pins to remove from edge of wheel well and fascia, on both sides.

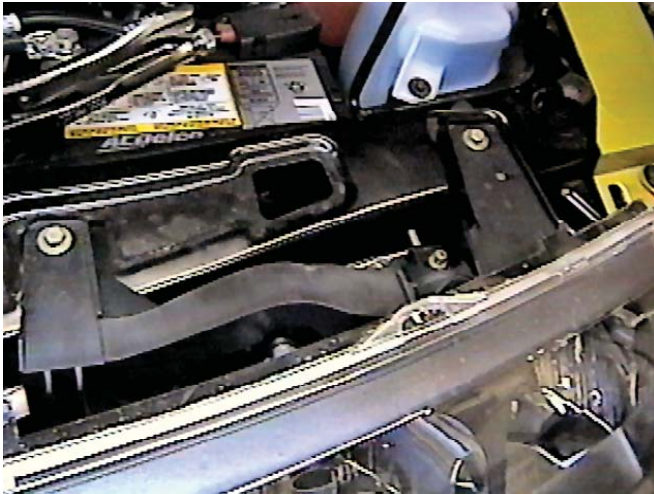




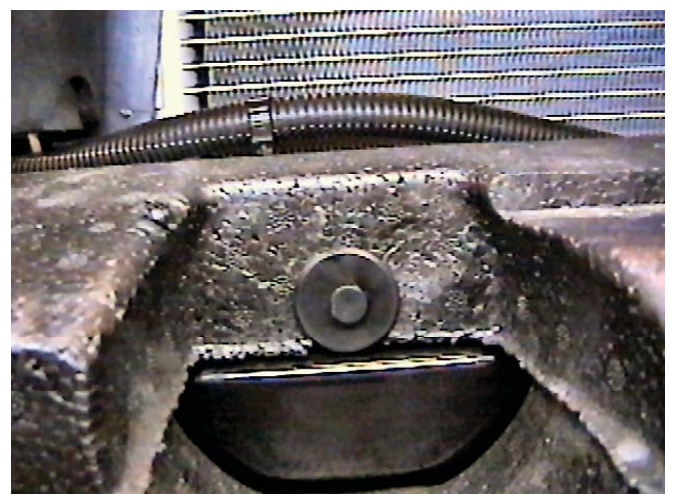
4. Pull wheel well plastic back and remove one metric bolt from fascia's corner with the 10MM socket, both sides.



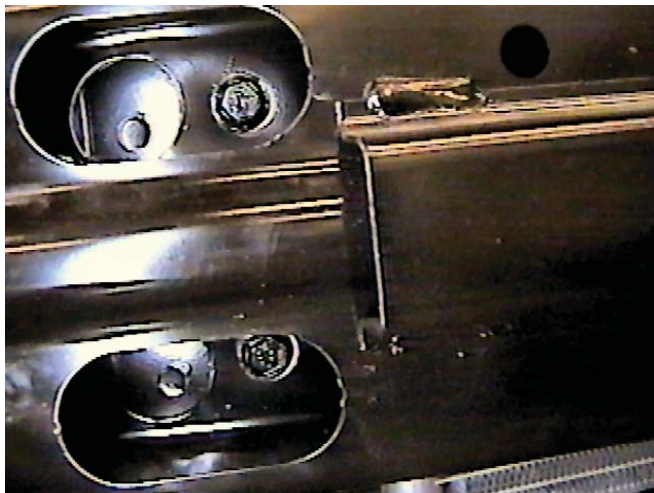
5. Remove the two push pins that attach to the bottom of metal bumper from lower fascia tabs. Pull fascia forward and set aside.



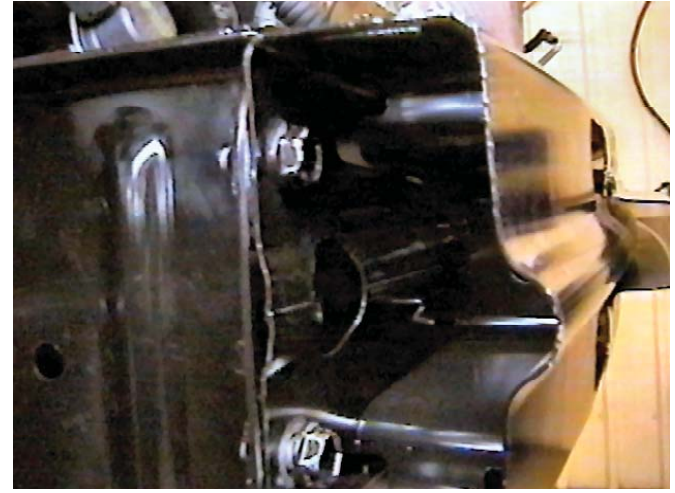
6. Using the 6MM socket, remove two metric bolts from headlight assemblies, pull forward, unplug electrical connections and set aside, on both sides.



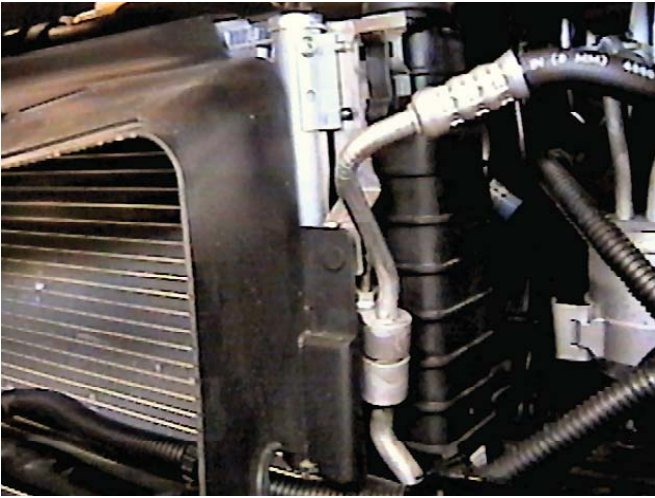
7. Remove the two push pins from styrofoam on metal bumper, pull forward and set aside.



8. Disconnect wire loom and temperature sensor from the top of metal bumper. Remove two metric bolts from metal bumper openings using the 13MM socket, on both sides.



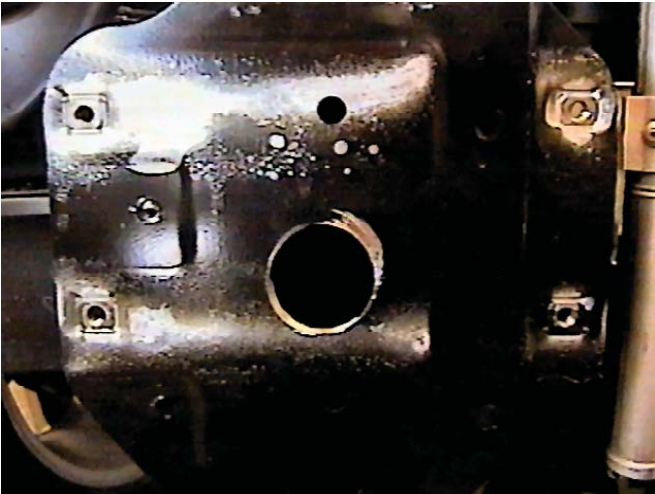
9. Using the 13MM wrench, remove the two metric bolts from open ends of metal bumper and set bumper aside.



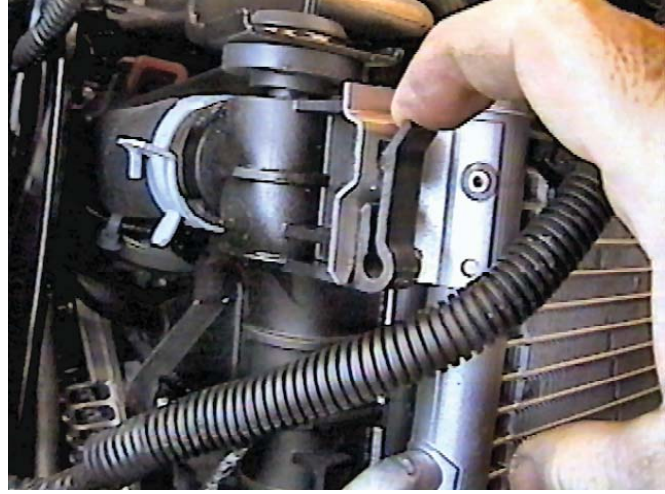
10. Remove push pin from air dam, on both sides and set air dam aside.



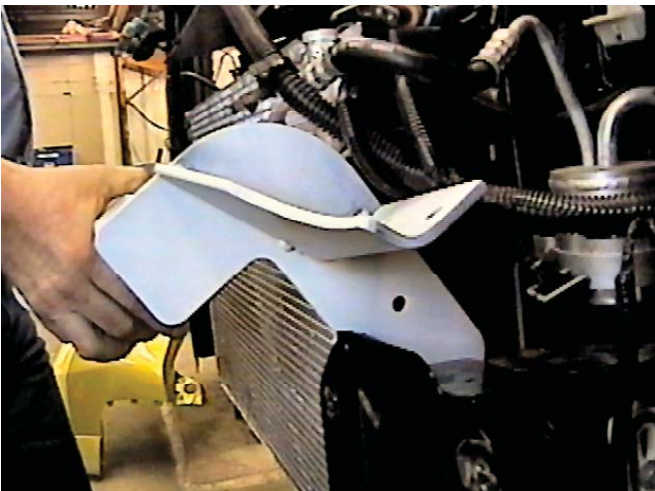
11. Remove the two metric bolts from air baffle on the passenger's side with the 6MM socket, pull air baffle forward and set aside.



12. Using the 1 1/2" hole saw, cut a hole into bumper bracket to gain access to the inside of frame rail, both sides (passenger's side shown).



13. Pull clips of radiator to the front to release on both sides. This will allow the radiator to slide up for easier baseplate installation.



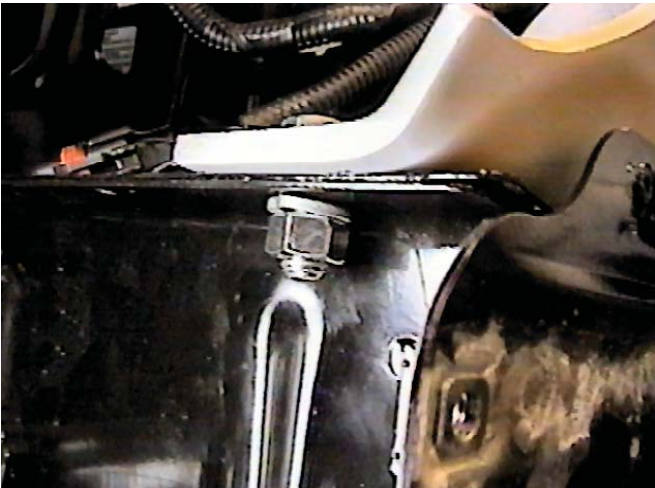
14. Rotate baseplate behind bumper brackets and slide onto frame rails, both sides.



15. Align baseplate with the existing holes on frame, insert bolt plates into cut 1 1/2" hole on bumper bracket, through to the existing holes and baseplate. Tighten 3/8" lock washers and hex nuts, both sides. Be sure and use loctite on all bolts/ hex nuts before tightening. Torque all bolts/ hex nuts according to torque chart in General Instruction sheet.



16. Using the baseplate as a template, drill the two holes with the 13/32" drill bit, on both sides. Insert the bolt plate through 1 1/2" hole and into drilled hole, tighten 3/8" lock washer and hex nut, both sides. Be sure and use loctite on all bolts before tightening. Torque all bolts according to torque chart in General Instructions.



17. Insert hex bolt into the top of baseplate and drilled hole on frame webbing, tighten the 3/8" lock washer and hex nut, on both sides. Be sure to use loctite on all bolts before tightening. Tighten all bolts according to Torque Chart in General Instruction Sheet.



18. Snap radiator to it's original position. Hold air dam as close to it's original position as possible, mark, trim as needed and reinstall. Reinstall air baffle, metal bumper, wire loom, temperature sensor, headlights and blinker assemblies. Be sure all electrical components are plugged in properly.



19. Hold fascia to its original position and trim lower mesh grille opening with the diagonal cutters or remove the twelve retainer clips from the back of fascia and completely remove mesh grille. Reinstall fascia.
20. The dimensional variations between otherwise identical cars can be considerable. While the location and size of the holes in the baseplate were designed to allow for easy installation, it may be necessary to file a hole slightly to allow a bolt to clear.
21. Install the tow bar and safety cables according to the instructions included in their packages.
22. Do not substitute other devices if the tow bar pin and clip are lost.
23. **DEALER OR INSTALLER: BE CERTAIN THE USER RECEIVES THE INSTRUCTION SHEET.**



Using the 15 torx, remove two bolts and pull taillight assembly straight back, both sides (left photo). The bulb hole can be drilled in either location (right photo).

Tools Required

6MM Socket
13MM Wrench
9/32" Drill Bit
Utility Knife

10MM Socket
Loctite
Vise Grips
1 1/2" Hole Saw

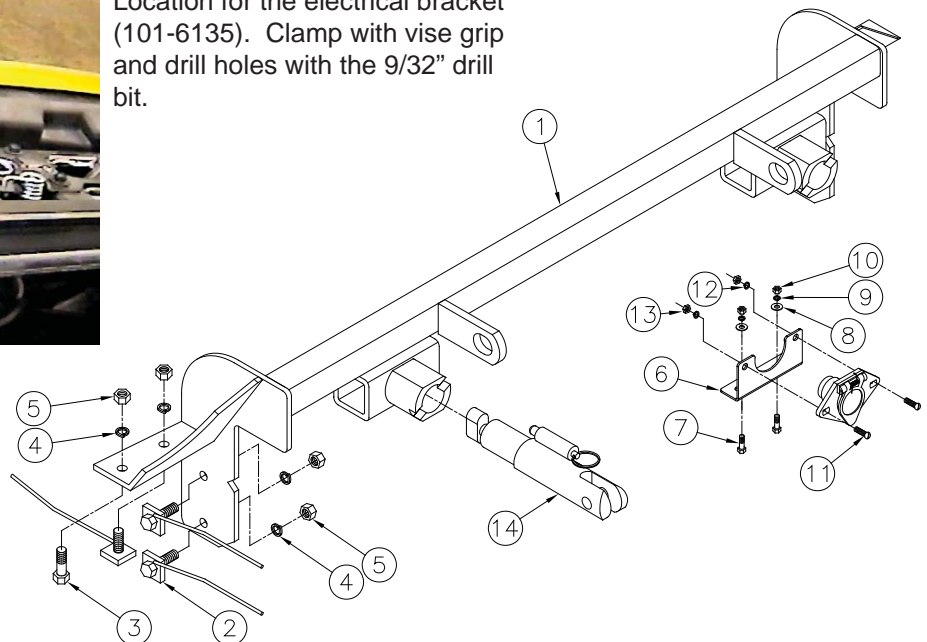
13MM Socket
13/32" Drill Bit
9/16" Socket
Diagonal Cutters

Parts List

Ref. No.	Qty.	Part No.	Description
1	1	61-6010	Weldment, Base Plate, BX3321
2	6	61-5383	3/8" Bolt Plate, with Wire
3	2	201-0443	3/8-16 x 1 Bolt, Grd. 5, ZP
4	8	203-0010	3/8 Lock Washer, ZP
5	8	202-0003	3/8-16 Hex Nut
6	1	101-6135	Electrical, Bracket, BX2160
7	2	201-0569	1/4-20 x 3/4 Bolt, Grd. 5, ZP
8	2	203-0001	1/4 Flat Washer, ZP
9	2	203-0008	1/4 Lock Washer, ZP
10	2	202-0069	1/4-20 Hex Whiz Nut, Loc, ZP
11	2	201-0192	#10-32 x 1/2 Slot, Rd. Hd. Screw
12	2	203-0054	#10 Lock Washer
13	2	202-0047	#10-32 Hex Nut
14	2	62-3468	Attachment, Assembly, SF/ SB (R)
15	2	101-5822	Adapter, 4 Way Connector (Not Shown)
	2	226-0046	Baseplate Safety Cable, 36" CL III (N S)
	2	229-0359	Quicklink, 3/8, ZP (Not Shown)
	2	290-0437	Receiver, Cap Plug (BLK) (Not Shown)



Location for the electrical bracket (101-6135). Clamp with vise grip and drill holes with the 9/32" drill bit.



IMPORTANT: Use only genuine factory replacement parts on your Base Plate. Do not substitute homemade or nontypical parts. If a bolt is lost or in need of replacement, for your safety and the preservation of your Base Plate, be sure to use a replacement bolt of the same grade (Usually Grade 5, refer to parts list). Repair parts may be ordered through your nearest Blue Ox dealer or distributor.