

Please read BOTH these Installation Instructions and the General Instructions before attempting to install or operate this equipment.

- Blue Ox® towing products and accessories are intended to be installed by Blue Ox® Dealers who are familiar with our products and have the necessary equipment and knowledge to do "fit work". When necessary Blue Ox® Dealers can be found at www.blueox.us or by contacting our Customer Care Department at (402) 385-3051 or toll free at (888) 425-5382.
- Many Blue Ox® baseplates are designed to use existing holes and hardware to mount the baseplate to the towed vehicle. Even though bolts are there, do not assume they are adequate for baseplate mounting. Always use hardware supplied in the hardware kit and existing hardware specified in the Baseplate Installation Instructions.

Attachment Tab Height: 21 1/2"
Attachment Tab Width: 24"

Bolt Torque Specifications
Torque in Foot-Pounds for Metric Bolts

Bolt Size	Grade 8.8	Grade 10.9
6MM	6	8
8MM	16	22
10MM	31	40
12MM	54	70
14MM	89	117

Confirm the towability and pre-towing procedures for your vehicle with the owner's manual or contact the vehicle's manufacturer for specific towing procedures.

Bolt Torque Specifications
Torque in Foot-Pounds for Inch Bolts

Bolt Size	Grade 5	Grade 8
1/4"	10	14
5/16"	19	29
3/8"	33	47
7/16"	54	78
1/2"	78	119
5/8"	154	230



! WARNING

Failure to read and follow these instructions could result in separation of the towed vehicle from the tow bar, causing property damage, loss of towed vehicle, personal injury or death.

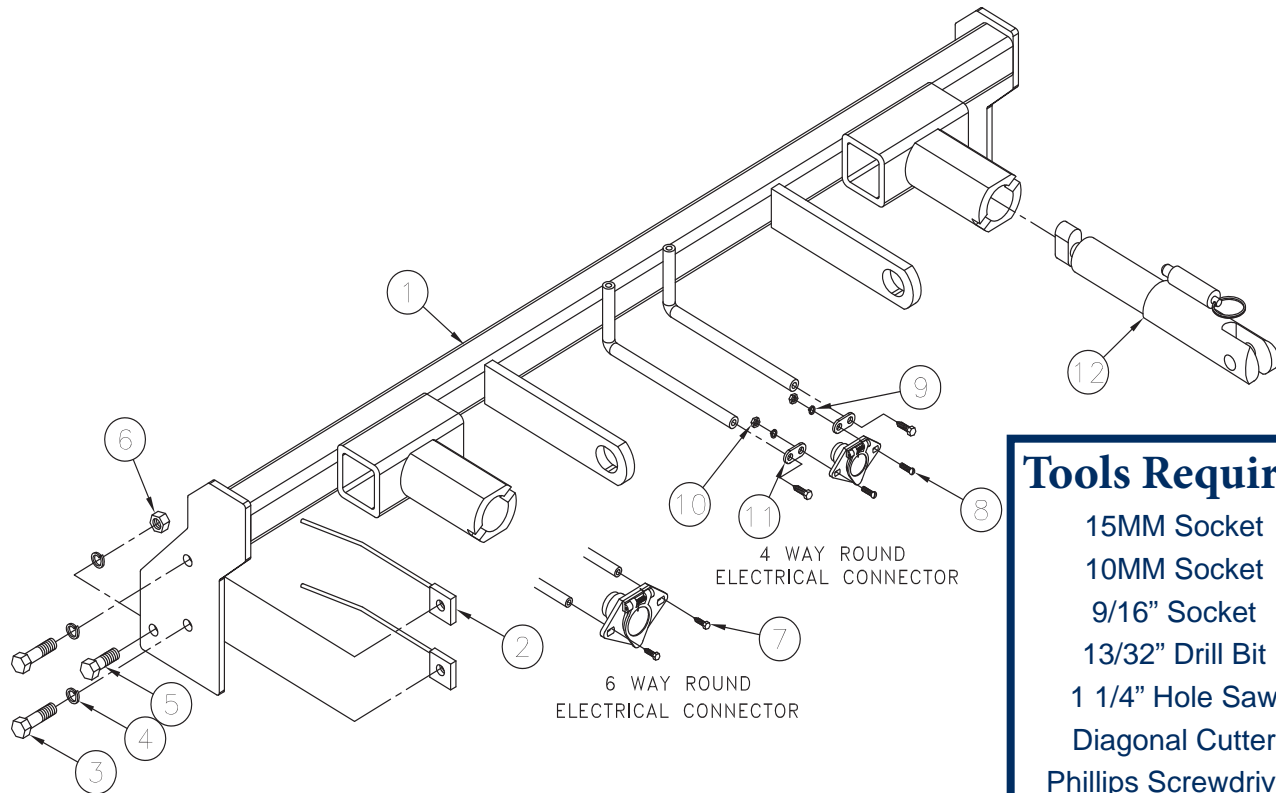
BX3520

2006-08 Suzuki Grand Vitara

Installation Instructions

Parts List

Ref.No.	Qty.	Part #	Description
1	1	61-6196	Weldment, Baseplate, BX3520
2	4	61-5208	Weldment, 3/8-16 Nut Plate, w/ 14" Wire
3	4	201-0440	3/8-16 x 1 1/2" Hex Bolt, Grade 5, ZP
4	6	203-0010	3/8" Lock Washer, ZP
5	2	201-0443	3/8-16 x 1" Hex Bolt, Grade 5, ZP
6	2	202-0003	3/8-16 Hex Nut, ZP
7	2	201-0553	1/4-20 x 1/2" Hx. Wshd, Type F Screw
8	2	201-0192	#10-32 x 1/2" Slot, Rd. Hd. Screw
9	2	203-0054	#10 Lock Washer
10	2	202-0047	#10-32 Hex Nut
11	2	101-5822	Adapter, 4 Way Connector
12	2	62-3469	Attachment, Assembly, SF/LB (R)
	2	226-0046	Baseplate Safety Cable, 36" CL III (N S)
	2	229-0359	Quicklink, 3/8, ZP (Not Shown)
E	2	290-0437	Cap Plug (Not Shown)



Tools Required

- 15MM Socket
- 10MM Socket
- 9/16" Socket
- 13/32" Drill Bit
- 1 1/4" Hole Saw
- Diagonal Cutter
- Phillips Screwdriver
- Vise Grip
- Loctite RED

Important:

Use only genuine factory replacement parts on your baseplate. Do NOT substitute homemade or non-typical parts. If a bolt is lost or in need of replacement, for your safety and the preservation of your baseplate, be sure to use a replacement bolt of the same grade. In most cases it will be Grade 5- please reference the parts list above. Replacement parts may be ordered through your nearest Blue Ox® dealer or distributor, or call our 24/7 Customer Care Team at (402)385-3051 or toll free (888) 425-5382.

BX3520

2006-08 Suzuki Grand Vitara

Installation Instructions

Attachment Tabs:

Due to the design of the removable tabs, the RangeFinder II tow bar can not be used. Adapters, except for the BX8833 and BX88151, can not be used with this baseplate.

Instructions:

The front fascia, upper grille and metal bumper are removed and reinstalled during baseplate installation. Drilling is required. Trimming of the lower grille is necessary.

The dimensional variations between otherwise identical vehicles can be considerable. Although the baseplate was designed for easy installation, it may be necessary to tailor the baseplate slightly to compensate for auto manufacturer's tolerances. These minor adjustments may include filing a hole slightly, bending electrical rods, and/or bending end plates.

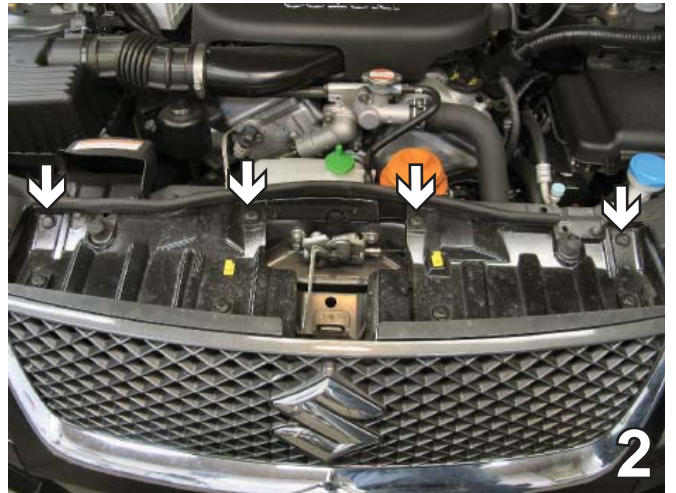
The BX8869 Bulb and Socket Wiring Kit is recommended for this vehicle.



Installation Instructions:



1. Remove four pushpins from behind the grille. Set pushpins aside to be reinstalled later.



2. Remove four pushpins from the top of the grille. Set the black cover aside to be reinstalled later. Lift grille up and then forward to release from the four clips at the bottom and one on either side of the grille. Set grille and pushpins aside to reinstall later.

BX3520

2006-08 Suzuki Grand Vitara

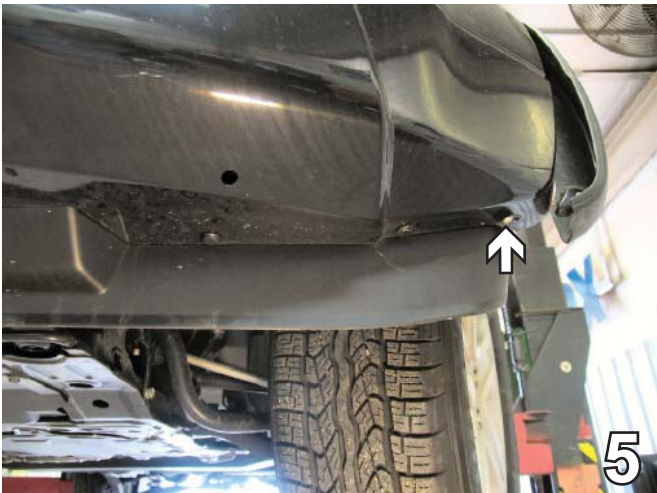
Installation Instructions



3. Just forward of the front tire, inside the wheel well, remove three Phillips screws. Begin with the screw at the bottom of fascia and work upward, removing two more. Do this to both sides of the vehicle. Set screws aside to be reinstalled later. Top Phillips screw is not shown.



4. Using a 10MM socket, remove one metric bolt just below the last Phillips screw removed. Do this to both sides of the vehicle. Set screws aside to reinstall later.



5. Remove three Phillips screws from the bottom of the fascia. Two are found just forward of the front tires, on both sides of the vehicle, another is in the center of the fascia. The photo above only shows the screw forward of the front tire on the driver's side. Set all bolts aside to be reinstalled later.



6. Remove six pushpins from the bottom of the fascia, pushpins are indicated by the white arrows in the photo above. Using a 10MM socket, remove two metric bolts, as indicated by the grey arrows in the photo. Arrows in graphic do not indicate all the pushpins that will be removed, but show where bolts and pushpins can be found.

BX3520

2006-08 Suzuki Grand Vitara

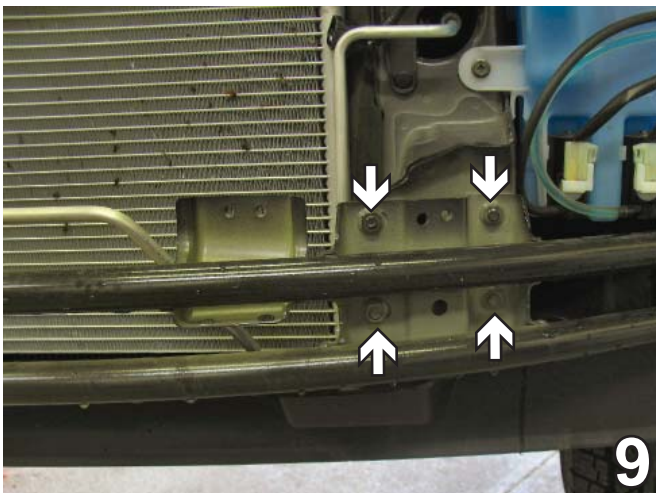
Installation Instructions



7. Using a 10MM socket, remove two metric bolts from the fascia between headlights and just behind the grille removed earlier. Pull fascia forward, disconnect the fog lights on both sides of the vehicle. Also disconnect the temperature sensor found on the driver's side. Set bolts and fascia aside carefully to be reinstalled later.



8. Pull forward on the plastic pieces clipped to the metal bumper. Do this to both sides of the vehicle. Set plastic clips aside to be reinstalled later.



9. Using a 12MM socket, remove four metric bolts from the metal bumper. Do this to both sides of the vehicle. Set bolts aside to be reinstalled later.

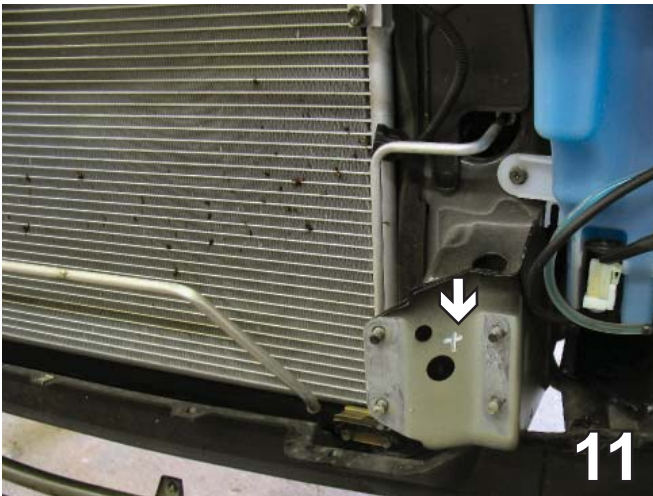


10. Pull bumper forward. Wire clips are still attached to both sides of the metal bumper. Remove these with a pushpin puller to release the metal bumper. Set bumper aside to be reinstalled later.

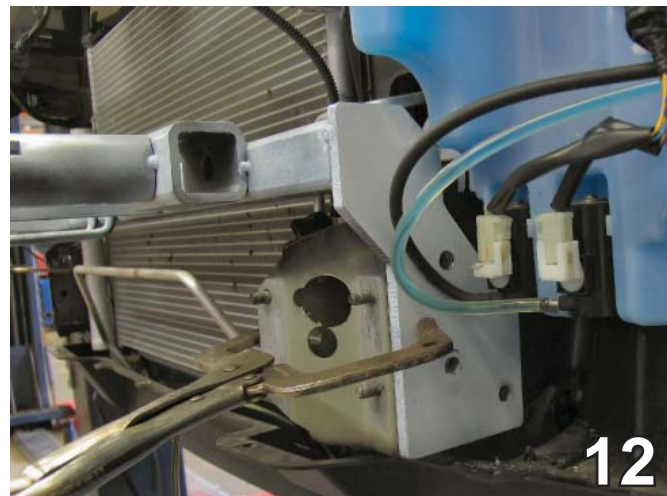
BX3520

2006-08 Suzuki Grand Vitara

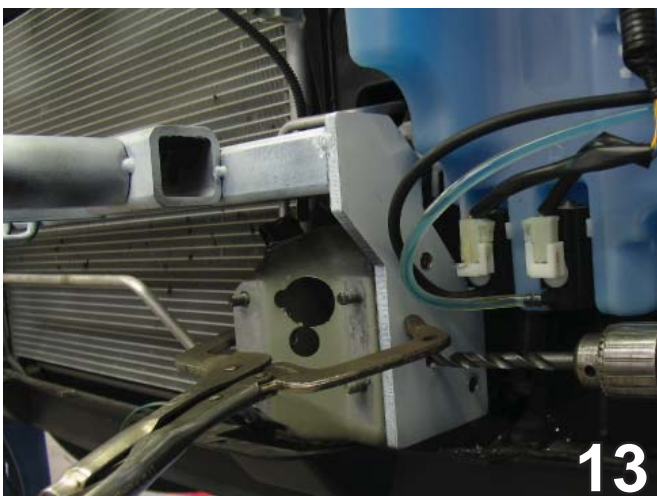
Installation Instructions



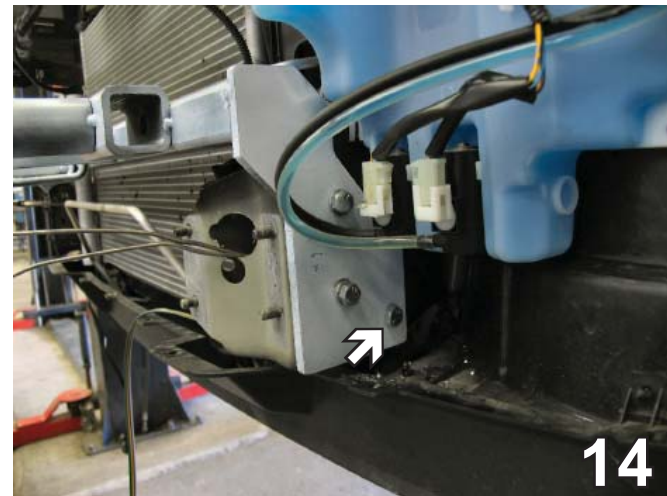
11. Using a 1 1/4" hole saw, cut a hole in the front of the frame rail to open up an area for the nut plate. Do this to both sides of the vehicle.



12. Align baseplate so that it is flush with the bottom and front edge of the frame rail. Clamp the baseplate in place with the large vise grips. Do this to both sides of the vehicle.



13. Using the baseplate as a template, drill three holes into the frame rail with the 13/32" drill bit. Do this to both sides of the vehicle.



14. Insert 3/8-16 nut plates through the frame rail opening and align with the upper two drilled holes. Insert 3/8-16 x 1 1/2" hex bolts and 3/8" lock washers and tighten to the 3/8-16 x 1" hex bolt into the bottom hole (see arrow in photo above) and fasten to the 3/8-16 hex nut and 3/8" lock washer. Do this to both sides of the vehicle.

****BE SURE TO USE LOCTITE® RED ON ALL BOLTS BEFORE TIGHTENING. TIGHTEN ALL BOLTS ACCORDING TO THE TORQUE CHART ON THE FRONT PAGE OF THESE INSTRUCTIONS OR ON PAGE 3 OF THE BASEPLATE TOWING GENERAL INSTRUCTIONS.**

BX3520
2006-08 Suzuki Grand Vitara
Installation Instructions



15. Align the fascia to its original position and, using a diagonal cutter, trim necessary openings in the grille for the attachment tabs, convenience links, and electrical rods.

Be sure that ALL electrical connections are plugged in properly and functioning BEFORE Installing the fascia.

16. Reinstall the bumper, fascia and grille, inserting all screws, pushpins, and bolts. The Installation of the baseplate is complete.

Install the tow bar and safety cables according to the instructions when demonstrating this to the customer. Be sure to include all the contents and packages.

Do NOT substitute any other devices if the tow bar pins and clips are misplaced.

DEALER or INSTALLER:
Be certain the user receives ALL instruction sheets for their products.

BX3520

2006-08 Suzuki Grand Vitara

Installation Instructions

CUSTOMER SERVICE COMMITMENT



2006 With removable tabs installed.



2006 With Cap Plugs installed.



2008 With removable tabs installed.

Blue Ox is committed to providing you with exceptional customer care throughout your lifetime with our products. Our team is here to assist you with any questions you may have regarding the performance of your product. Simply call 1-800-228-9289 and you can speak with our customer care team.

Additionally, please visit our website to see which rallies our Destination America team will be attending. For a nominal fee, our service technician will service your towing system to ensure it's in proper working condition. Also as a commitment to our customers, should you visit our factory you can stay at our full service Blue Ox campground at no charge along with enjoying a factory tour.

Again thank you for being our customer and for the confidence you have shown in the performance of our products. It is because of customers like you we enjoy the success we have today.

If the baseplate is in an accident, it must be replaced. **DO NOT** use it again! An accident can cause unseen damage and using it again could result in more damage or serious injury. **DO NOT** use the baseplate if it is damaged or missing parts.



© 2005, 07, 08, 09 Blue Ox
One Mill Road, Industrial Park
Pender, Nebraska 68047
Phone: (402) 385-3051
Toll Free: (888) 425-5382
Fax: (402) 385-3360
www.blueox.us