



Strong As An Ox™

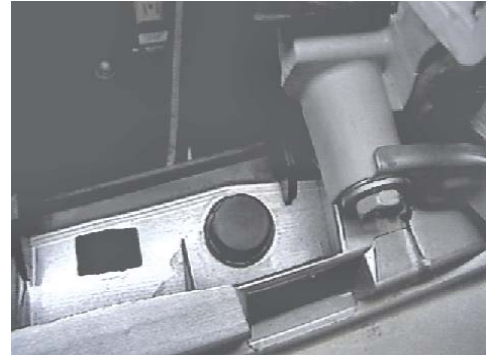
BX3758 Installation Instructions 2003-07 Toyota 4-Runner (2WD/4WD)

Serial No.

The front fascia and rubber air dam are removed for baseplate installation. Drilling is required. Trimming of front grill and air dam is required or air dam can not be reinstalled. The BX8847 is available for the vehicle. Attachment Tabs are 21 inches center to center and a height of 22 1/4 inches.



1. Using the flat screw driver, press the six retainer clips in on black plastic cover on top side of fascia, lift to unsnap the back clips on cover and set aside.



2. Just under black plastic piece on the top edge of fascia are three push pins to remove.



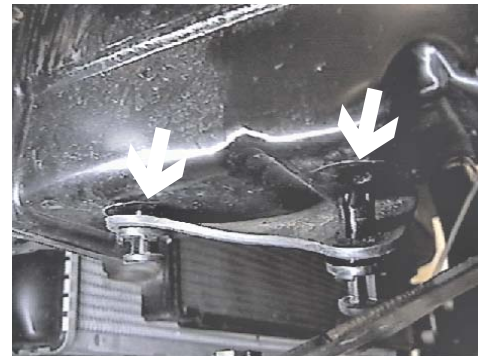
3. Just forward of front tire is one metric bolt to remove with the 10MM socket, both sides.



4. Remove one metric bolt just above previous bolt on fascia's corner with the 7MM socket, both sides.



5. Remove the nine metric bolts on the bottom side of fascia using the 10MM socket. Pull fascia forward, unplug electrical components and set fascia aside.



6. Remove two push pins from rubber air dam on the bottom of frame and two from the top of rubber air dam and set aside.



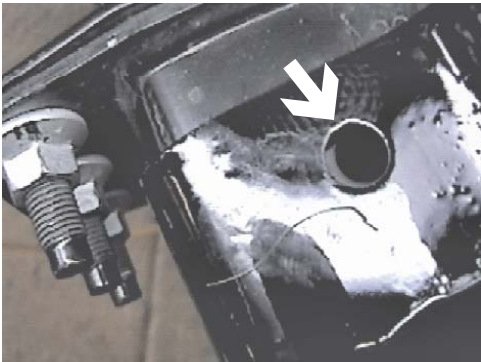
Strong As An Ox™



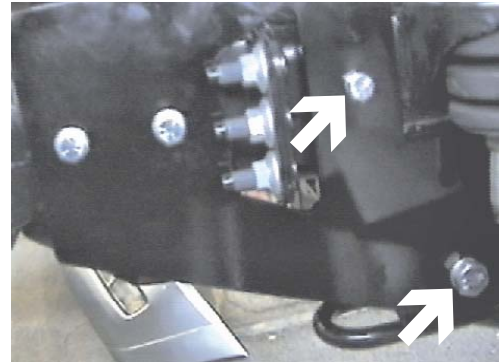
7. Using the 14MM socket, remove the four metric bolts from metal bumper, pull forward and set aside.



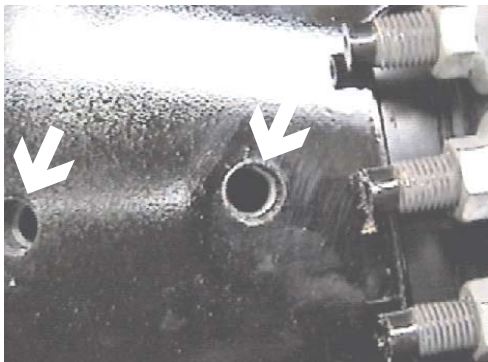
8. Drill a 1 1/4" hole in the end of frame rail cap with the 1 1/4" hole saw.



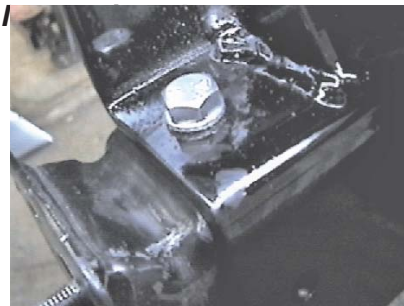
9. Set baseplate on top of frame rails to align with existing holes and secure with vise grips.



10. Install 12MM and 8MM bolts with lock washers into support plate. Install flat washers to align with existing holes and tighten in frame according to drawing on page 4. **Be sure and use loctite on all bolts before tightening. Tighten all bolts according to torque chart in the General**



11. Using the rubber mallet, align side holes on baseplate (61-6065) with support plate holes (101-6691) as shown in the drawing on the last page and resecure with vise grip. Drill top holes of baseplate with the 13/32" drill bit while maintaining alignment of side holes, both sides.



12. Insert nut plate into frame end to align with drilled holes and tighten the two 3/8-16 x 1 1/4" bolts and lock washers, both sides. **Be sure and use loctite on all bolts before tightening. Tighten all bolts according to torque chart in the General Instruction sheet.**



Strong As An Ox™

13. Using the support plate and baseplate as a template, drill the two holes on each side with the 13/32" drill bit. Insert nut plate into frame end to align with drilled holes and tighten the two 3/8-16 x 1 1/2" bolts and lock washers, both sides. **Be sure and use loctite on all bolts before tightening. Tighten all bolts according to torque chart in the General Instruction sheet.**

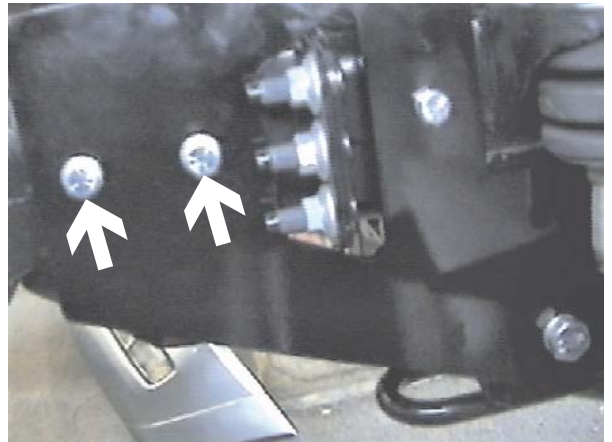
14. Reinstall metal bumper, hold fascia to align with original position, mark and trim fascia as needed (see photo to the right). If you choose to reinstall both air dams, it will be necessary to trim them. **Be sure all electrical components are plugged in properly.**

15. The dimensional variations between otherwise identical cars can be considerable. While the location and size of the holes in the baseplate were designed to allow for easy installation, it may be necessary to file a hole slightly to allow a bolt to clear.

16. Install the tow bar and safety cables according to the instructions included in their packages.

17. Do **not** substitute other devices if the tow bar pin and clip are lost.

18. **DEALER OR INSTALLER: BE CERTAIN THE USER RECEIVES THE INSTRUCTION SHEET.**

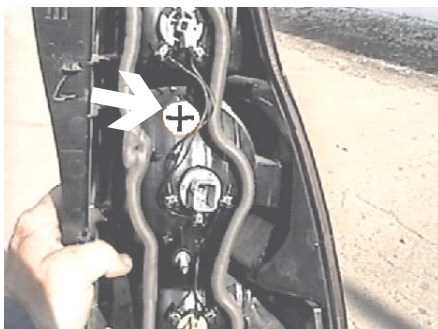


Tools Required

7MM Socket
12MM Socket
Flat Screw Driver
1 1/4" Hole Saw
Rubber Mallet

8MM Socket
Loctite
Vise Grips
Utility Knife

10MM Socket
14MM Socket
9/16" Socket
13/32" Drill Bit



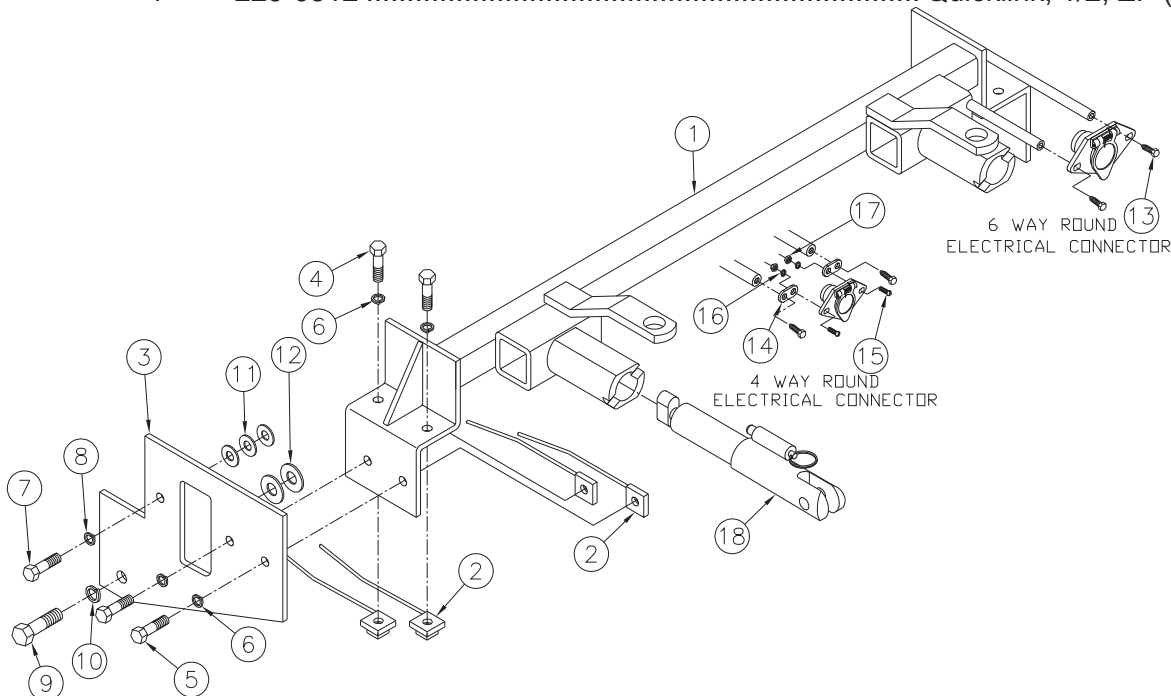
Location for the Bx8869 on driver's side tail light assembly.



Strong As An Ox™

Parts List

Ref. No.	Qty.	Part No.	Description
1	1	61-6065	Weldment, Base Plate, BX3758
2	8	61-5208	3/8" Nut Plate, with Wire
3	2	101-6721	Support Plate, BX3758
4	4	201-0368	3/8-16 x 1 1/4 Bolt, Grd. 5, ZP
5	4	201-0440	3/8-16 x 1 1/2 Bolt, Grd. 5, ZP
6	8	203-0010	3/8 Lock Washer, ZP
7	2	201-0446	8MM-1.25 x 30MM, Hex Bolt, Grd. 8 8, ZP
8	2	203-0102	8MM Lock Washer, ZP
9	2	201-0603	12MM-1.25 x 45MM, Hex Bolt, Grd. 8 8, ZP
10	2	203-0105	12MM Lock Washer, ZP
11	6	203-0003	3/8 Flat Washer, ZP
12	4	203-0005	1/2 Flat Washer, ZP
13	2	201-0553	1/4-20 x 1/2 Hx. Wshd, Type F Screw
14	2	101-5822	Adapter, 4 Way Connector
15	2	201-0192	#10-32 x 1/2 Slot, Rd. Hd. Screw
16	2	203-0054	#10 Lock Washer
17	2	202-0047	#10-32 Hex Nut
18	2	62-3469	Attachment, Assembly, SF/ LB (R)
	2	226-0049	Baseplate Safety cable, 36" CL IV (Not Shown)
	4	229-0512	Quicklink, 1/2, ZP (Not Shown)



IMPORTANT: Use only genuine factory replacement parts on your Base Plate. Do not substitute homemade or nontypical parts. If a bolt is lost or in need of replacement, for your safety and the preservation of your Base Plate, be sure to use a replacement bolt of the same grade (Usually Grade 5, refer to parts list). Repair parts may be ordered through your nearest **Blue Ox** dealer or distributor.