

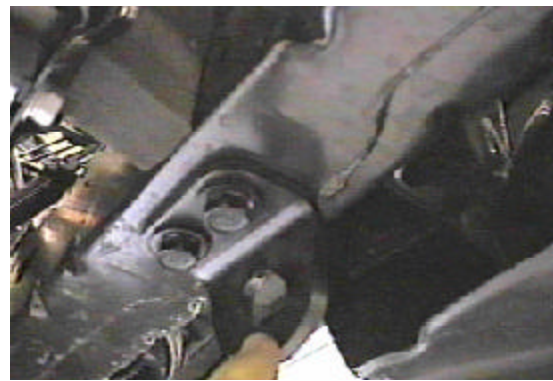


**BX3761 Installation Instructions  
2005 Toyota Sequoia, 4WD**

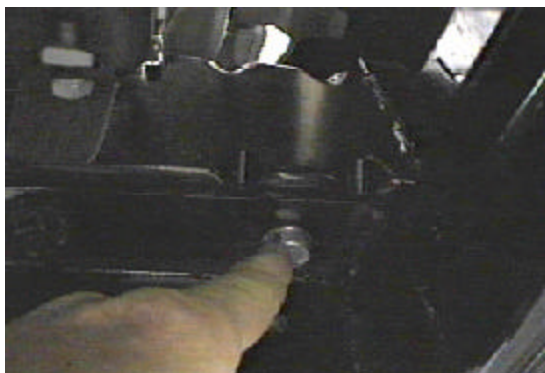
**V-8/ 4.7 L**

**Serial No.**

Tie down bracket and tow hook are removed and reinstalled for baseplate installation. Some drilling required. The attachment tabs are 24 inches center to center and at 14 inches height.



1. Using the 17MM socket, remove the two metric bolts from factory tie down bracket on driver's side.
2. Using the 17MM socket, remove the two metric bolts from factory tow bracket on passenger side.



3. Hold baseplate in place and tighten existing bolts. **Be sure and use loctite on all bolts before tightening.** Using baseplate as a template, drill holes with 17/32" drill bit, both sides.

4. Insert the nut plate into holes on frame sides to align with drilled holes. Tighten 1/2-13 hex bolt and lock washer into drilled holes and nut plate. **Be sure and use loctite on all bolts before tightening. Tighten all bolts according to Torque Chart in the General Instruction sheet.**
5. The dimensional variations between otherwise identical cars can be considerable. While the baseplate was designed for easy installation, it may be necessary to tailor the baseplate slightly to compensate for auto manufacturers' tolerances. These minor adjustments may include filing a holes slightly, bending electrical rods, adding shims and/ or bending endplates.
6. Install tow bar and safety cables according to the instructions included in their packages. Do not substitute other devices if the tow bar pin or clip is lost.

**7. DEALER OR INSTALLER: BE CERTAIN THE USER RECEIVES THE INSTRUCTION SHEET.**

**IMPORTANT:** Use only genuine factory replacement parts on your Base Plate. Do not substitute homemade or nontypical parts. If a bolt is lost or in need of replacement, for your safety and the preservation of your Base Plate, be sure to use a replacement bolt of the same grade (Usually Grade 5, refer to parts list). Repair parts may be ordered through your nearest **Blue Ox** dealer or distributor.



Strong As An Ox™

## Tools Required

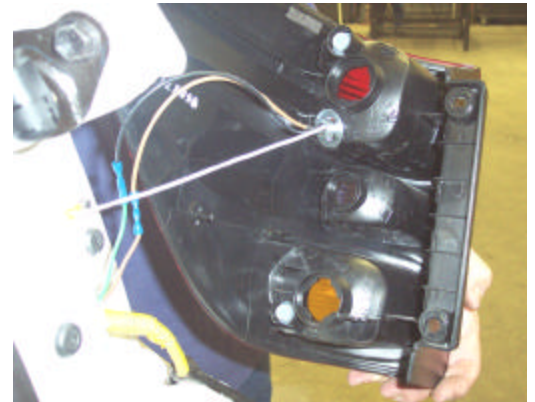
17MM Socket

3/4" Socket  
17/32" Drill Bit

Loctite Red

## Parts List

Ref. No.	Qty.	Part No.	Description
1	1	61-6090	Weldment, Base Plate, BX3761
2	2	61-5496	1/2" Nut Plate, with 18" Wire
3	2	201-0051	1/2-13, Hex Bolt, Grd 5., ZP
4	2	203-0012	1/2 Lock Washer, ZP
5	2	201-0553	1/4-20 x 1/2 Hx. Wshd, Type F Screw
6	2	202-0047	#10-32 Hex Nut
7	2	203-0054	#10 Lock Washer
8	2	201-0192	#10-32 x 1/2 Slot, Rd. Hd. Screw
9	2	101-5822	Adapter, 4 Way Connector
E	4		Existing Metric Bolts



**Location for the BX8869  
on the passenger's side  
taillight assembly, 2004 model.**

